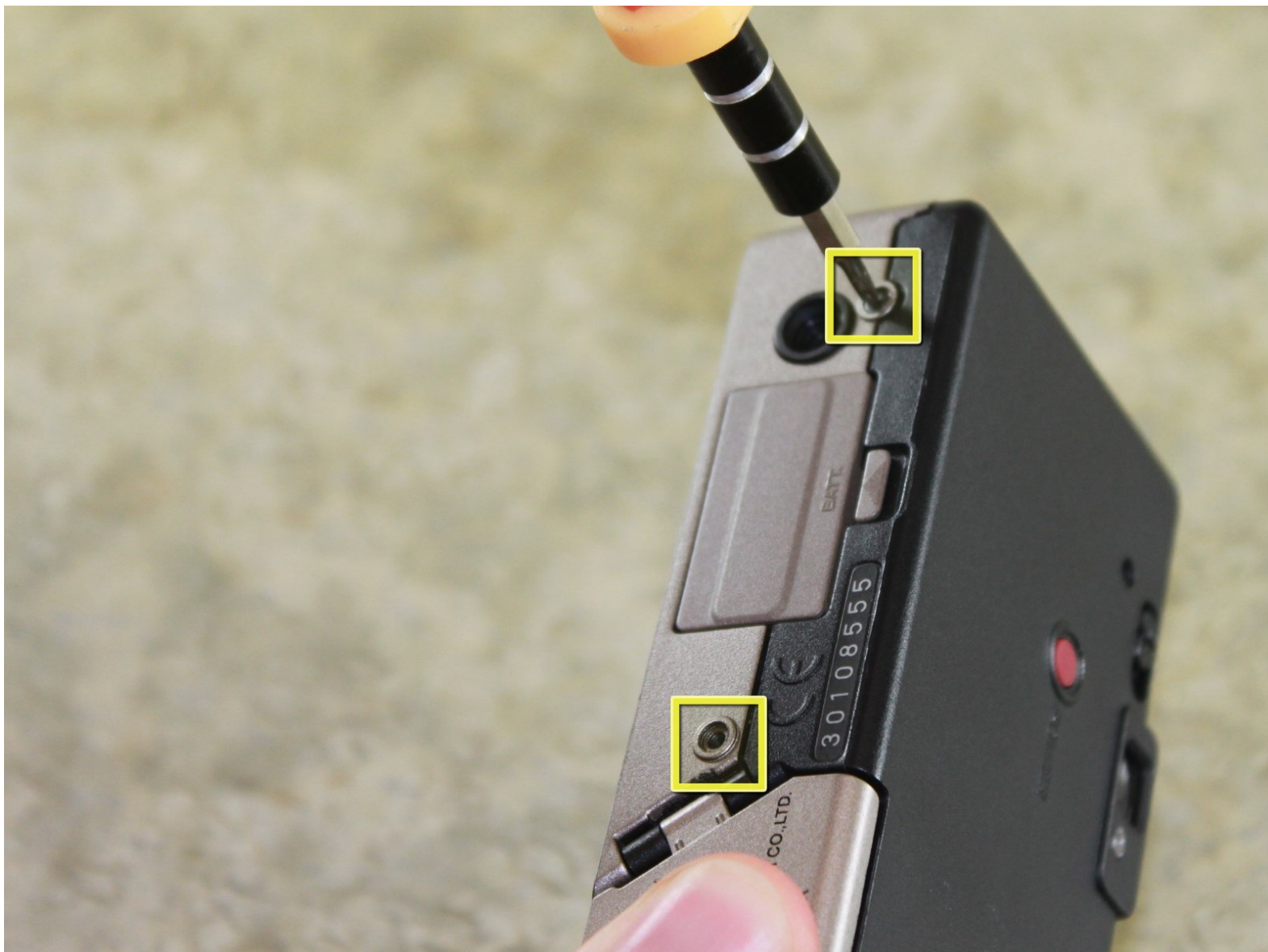




Fujifilm Endeavor 100ix Battery Door Replacement

Replace the Battery Door in your Fujifilm Endeavor 100ix.

Written By: Eric Nicolai



INTRODUCTION

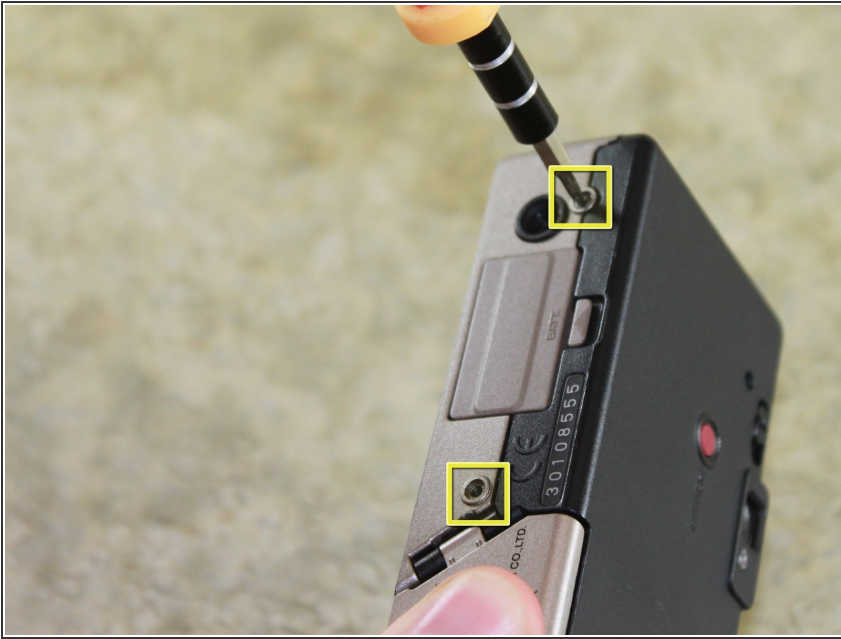
Use this guide to replace the battery door.



TOOLS:

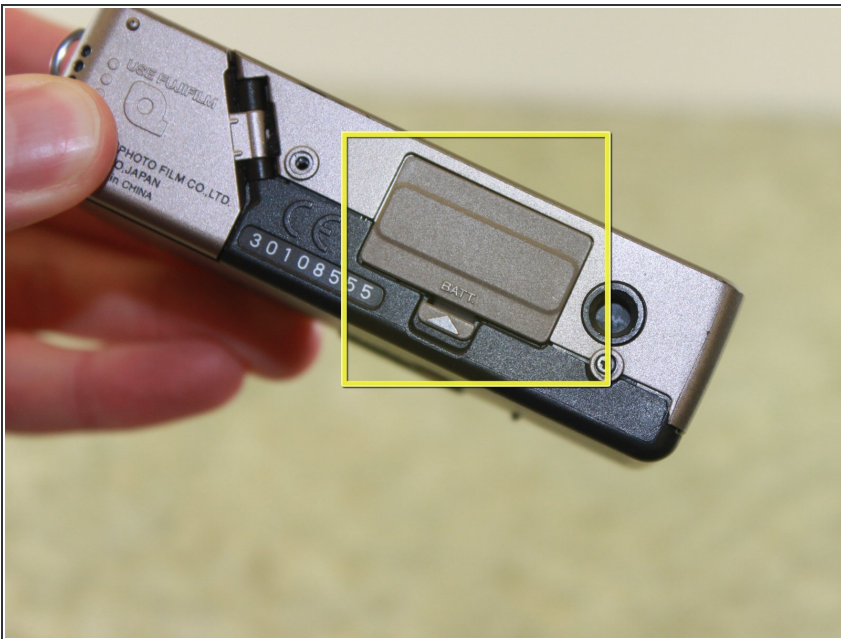
- [Phillips #00 Screwdriver](#) (1)
-

Step 1 — Battery Door



- Locate and remove two 6.4mm screws on the bottom of the camera with a Phillips #00 screwdriver.

Step 2



- Locate the battery door.

Step 3



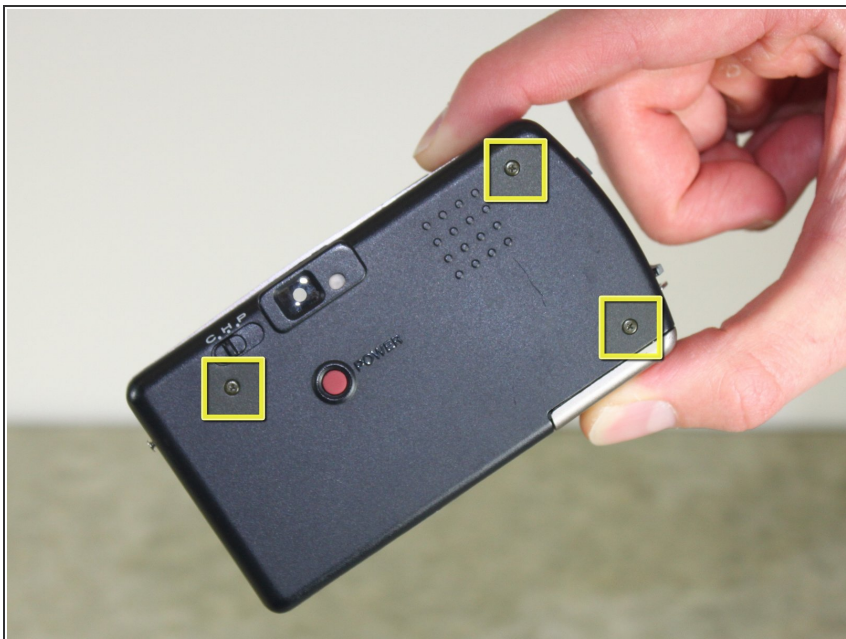
- Locate the latch on the battery door.
- Use your finger pry to it open where it says "BATT."

Step 4



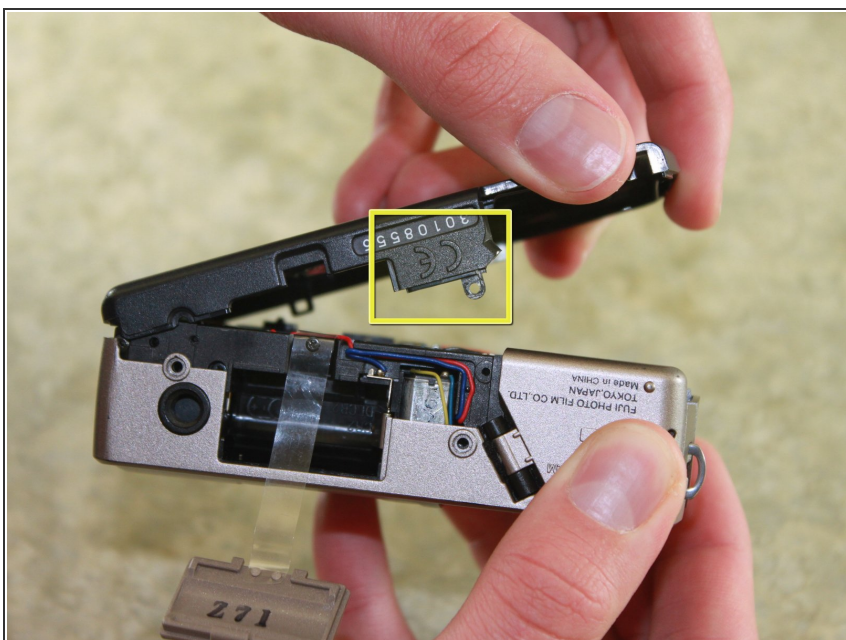
- Remove the battery from the camera by pulling the battery door outward.

Step 5



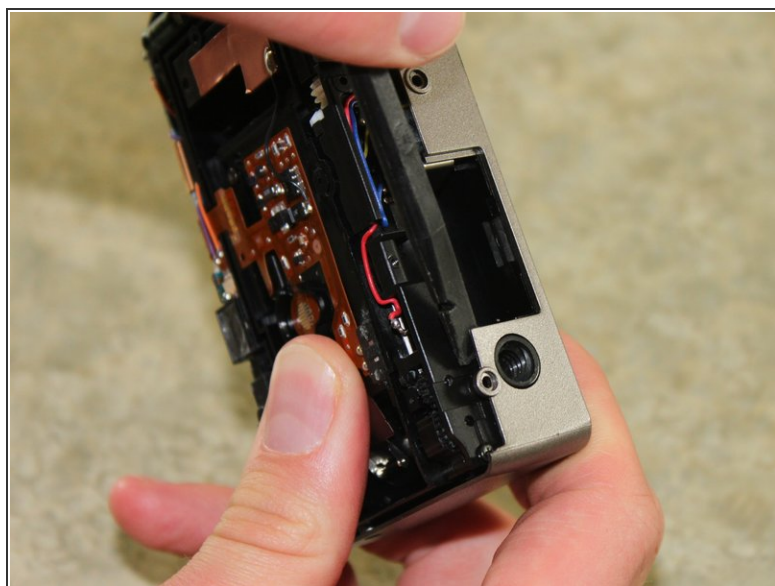
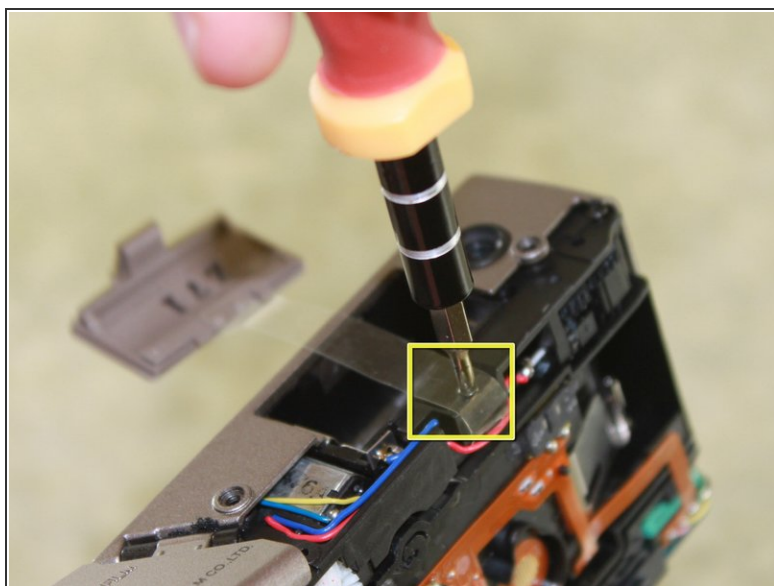
- Locate and remove three black 3.80mm screws on the back of the black casing with the Phillips #00 screwdriver.

Step 6



- Squeeze the camera placing a thumb on the tab marked CE.
- Pull the back half of the camera firmly away from the camera body.

Step 7



- Locate and remove the 3.80mm screw that holds the plastic strip to the camera body with a Phillips #00 screwdriver.
- The plastic strip will now come off the camera body.

To reassemble your device, follow these instructions in reverse order.