



# Samsung GT-E2120 Teardown

This is a short teardown to get an idea of the insides of the Samsung GT-E2120.

Written By: Michael C



---

## INTRODUCTION

This guide will give you a quick look inside the Samsung GT-E2120 (a.k.a E2120). It shows how the phone comes apart and will give you a quick look inside. This teardown should not be used as a dissasembaly guide.

---

### TOOLS:

- [Anti-Static Wrist Strap](#) (1)
  - [Metal Spudger](#) (1)
  - [Phillips #00 Screwdriver](#) (1)
-

## Step 1 — Samsung GT-E2120 Teardown



- Before you begin it's always good to ground yourself to eliminate the risk for shock.

## Step 2



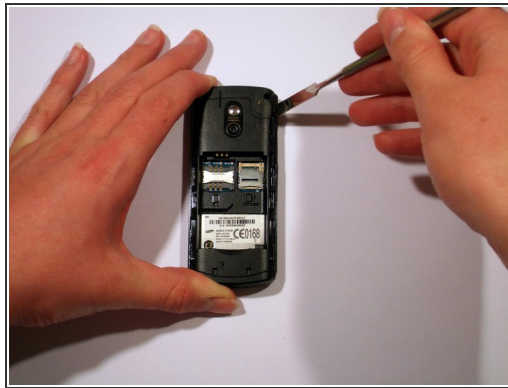
- Using your thumb, press down on the back of the device in a downward motion to open the back cover.
- Remove the battery along with the sim card and Micro-SD card.
- ⓘ This phone can take up to a 2GB Micro-SD card and is great for storing music. It even has a FM radio!

### Step 3



- Next, using a Philips screwdriver, remove the five screws from the back of the device.

### Step 4



- For this step a metal spudger is used to release the clips along the bottom, top, and sides of the phone.
- These clips can be found at the points marked in red.
- ⓘ Working from the top down, gently prying at the case the clips are easily dislodged.



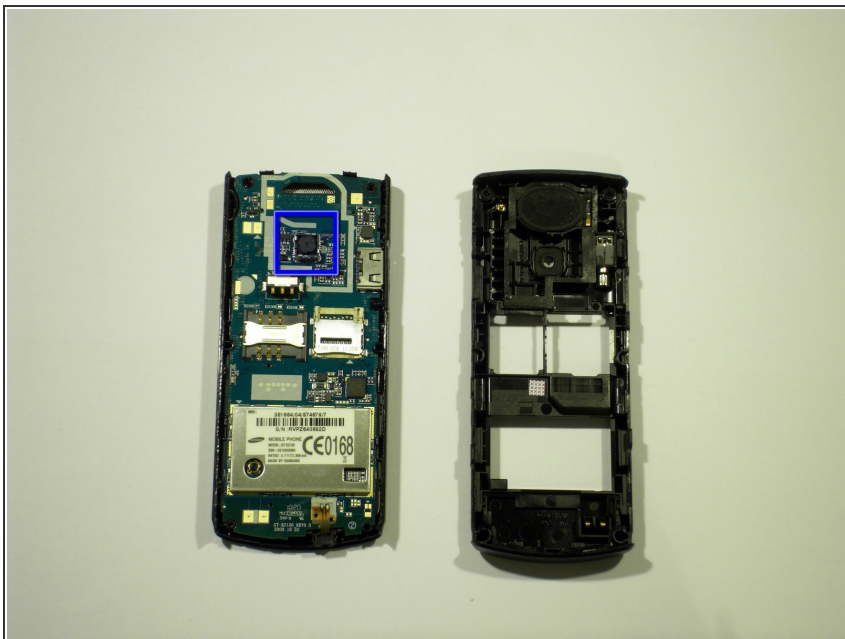
## Step 5



- When the bottom of the phone is reached it is a bit harder to pull the bottom clips off.
- This can be made a tad easier by using the pointed end of the spudger to get in and under the case.
- Once the case is lifted up slightly, you can get enough purchase under the clip and lift it off.

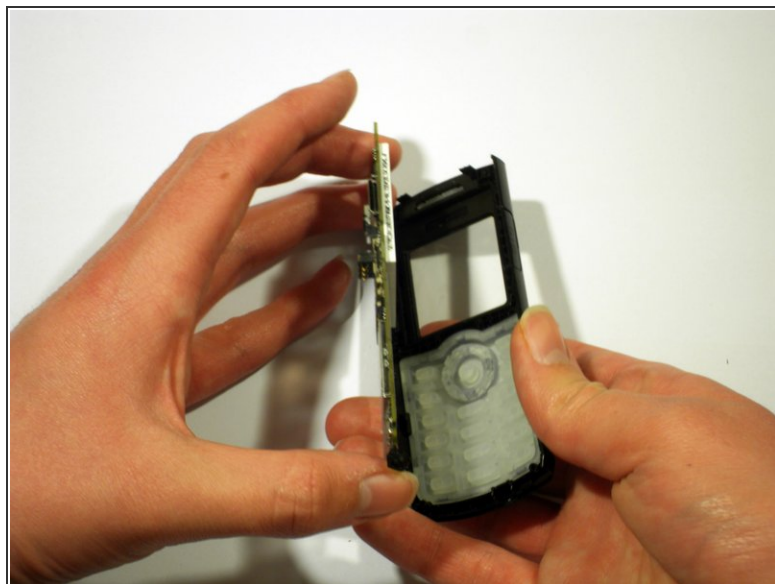
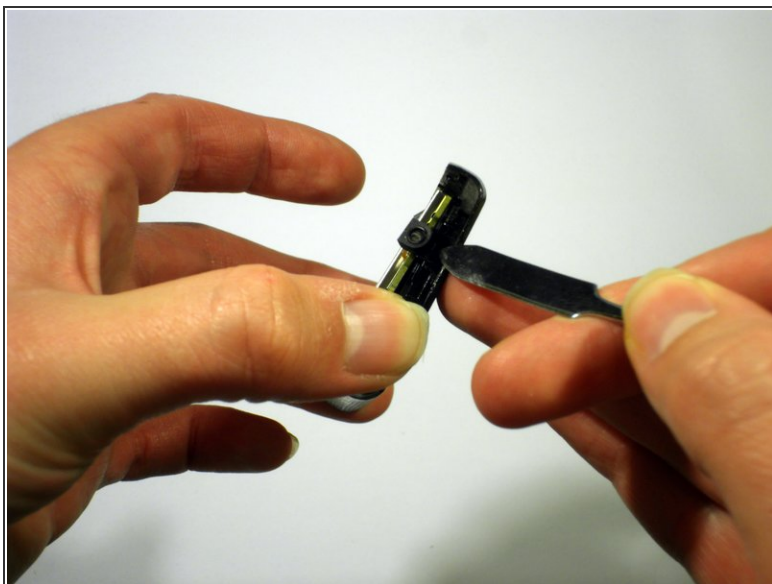
⚠ Be careful so you don't damage the motherboard!

## Step 6



- This image shows the two halves separated.
- The camera located in the blue square is a VGA 640X480 resolution color camera.

## Step 7



- The microphone is carefully lifted from its bracket, and the motherboard is carefully removed.

## Step 8



- Then the keyboard is simply pushed out.
- ⓘ The Phone includes a 65K CSTN color screen with a 128X128 resolution.

To reassemble your device, follow these instructions in reverse order.