



Sony Ericsson W200i Speaker Replacement

Replacing the speaker is pretty simple, just be...

Written By: Andy Whitmyre



INTRODUCTION

Replacing the speaker is pretty simple, just be sure to keep track of all of the parts.

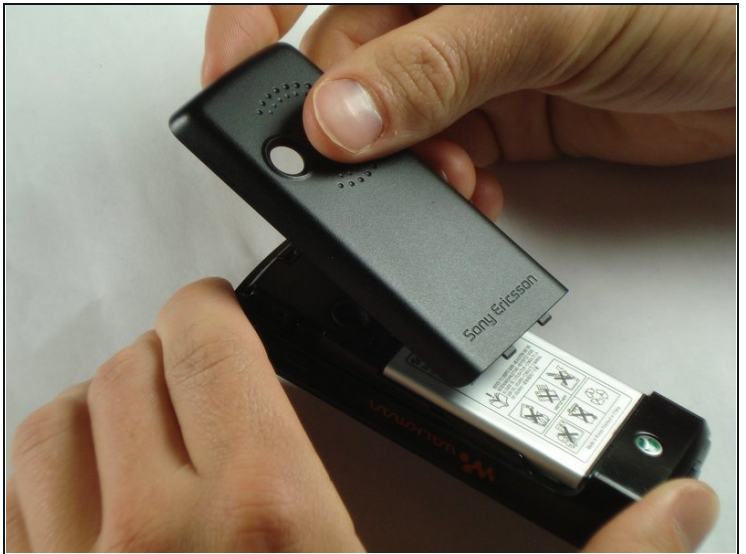
TOOLS:

[iFixit Opening Tool](#) (1)

[T6 Torx Screwdriver](#) (1)

[Tweezers](#) (1)

Step 1 — Disassembling Sony Ericsson W200i Battery



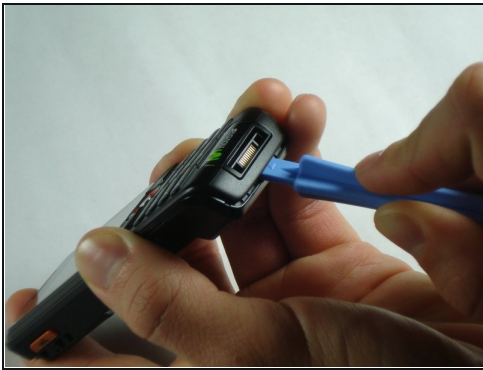
- Slide the battery cover up and off the phone.

Step 2



- Pop the battery out of its slot by lifting it up.

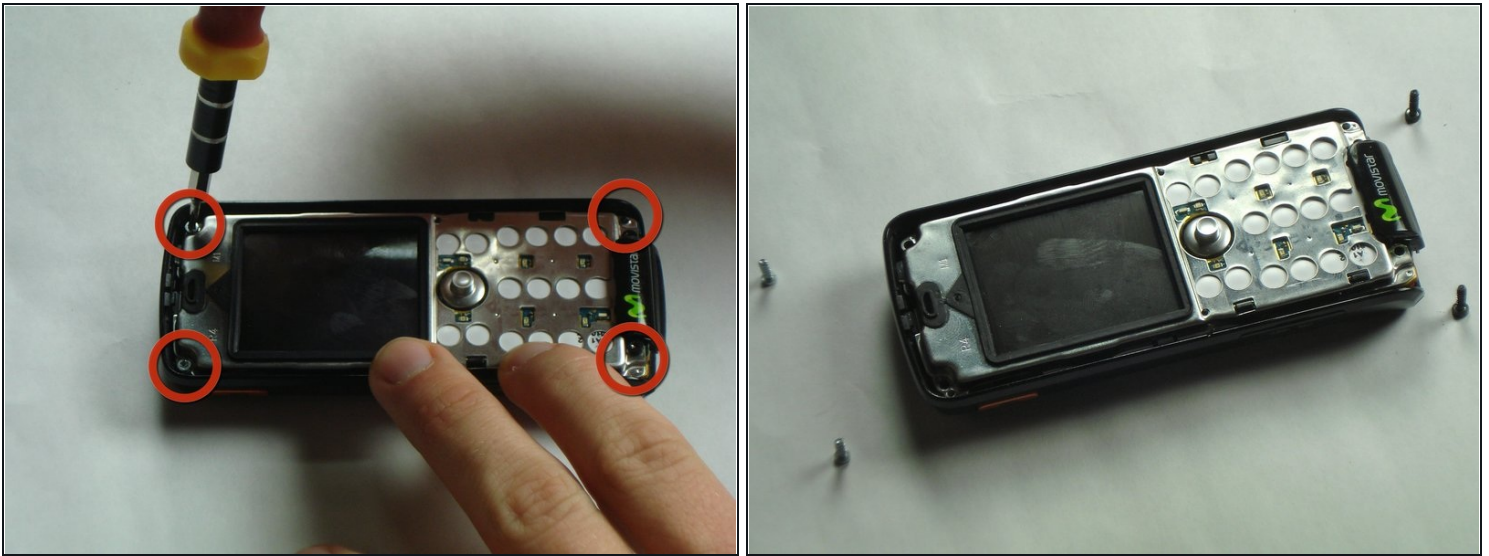
Step 3 — Front Case



- Insert the plastic opening tool in between the front case and the back case.
- Apply downward pressure to make the case lift upwards, thus popping the front case off.

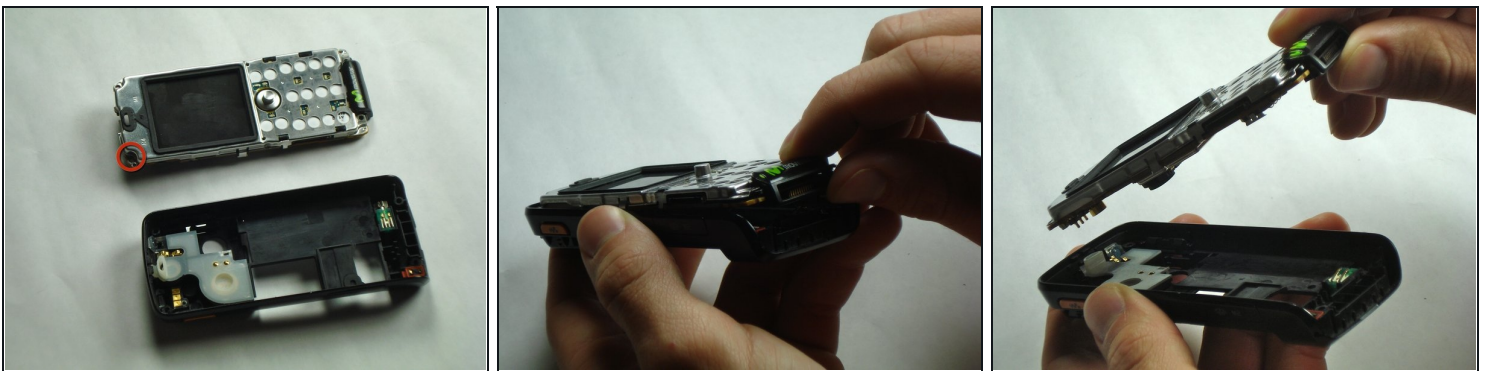
⚠ Use caution when removing the front case. It may seem stuck but just ease it out.

Step 4 — Core



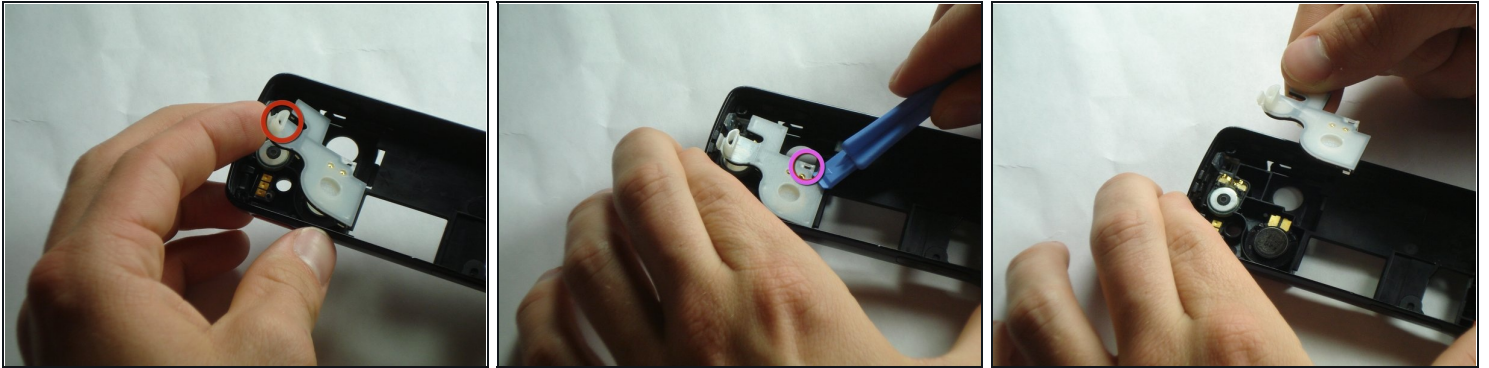
- Remove the 4 screws in the corners of the front of the phone using a T6 screwdriver.
 - ⓘ Note that the top 2 screws are silver and the bottom 2 screws are black.

Step 5



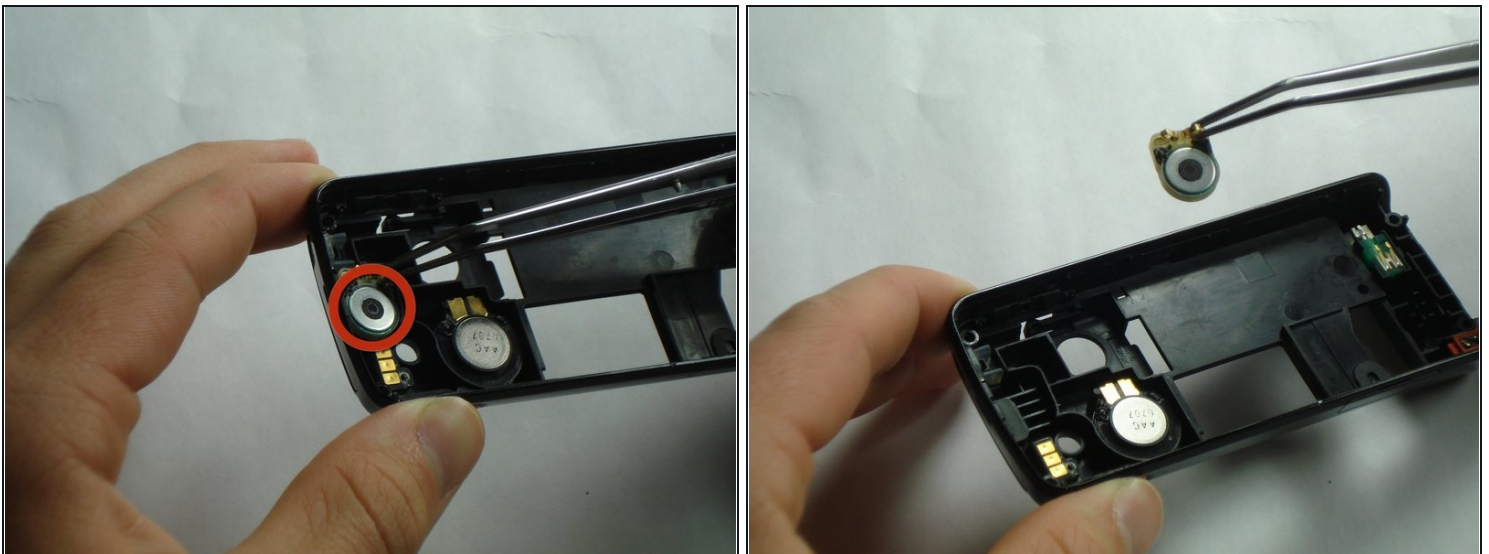
- There is a black tab in the top left corner holding the core in place.
- Remove the core by pulling straight up to prevent breaking the tab.

Step 6 — Back Case



- Pull back on the indicated tab of the white plastic cover to unhook it from the top of the phone.
- Using the plastic opening tool, undo the indicated clip on the bottom of the white plastic cover.
- Remove the white plastic cover.

Step 7 — Speaker



- Remove the speaker by pulling it up and out of place with the [tweezers](#).

To reassemble your device, follow these instructions in reverse order.