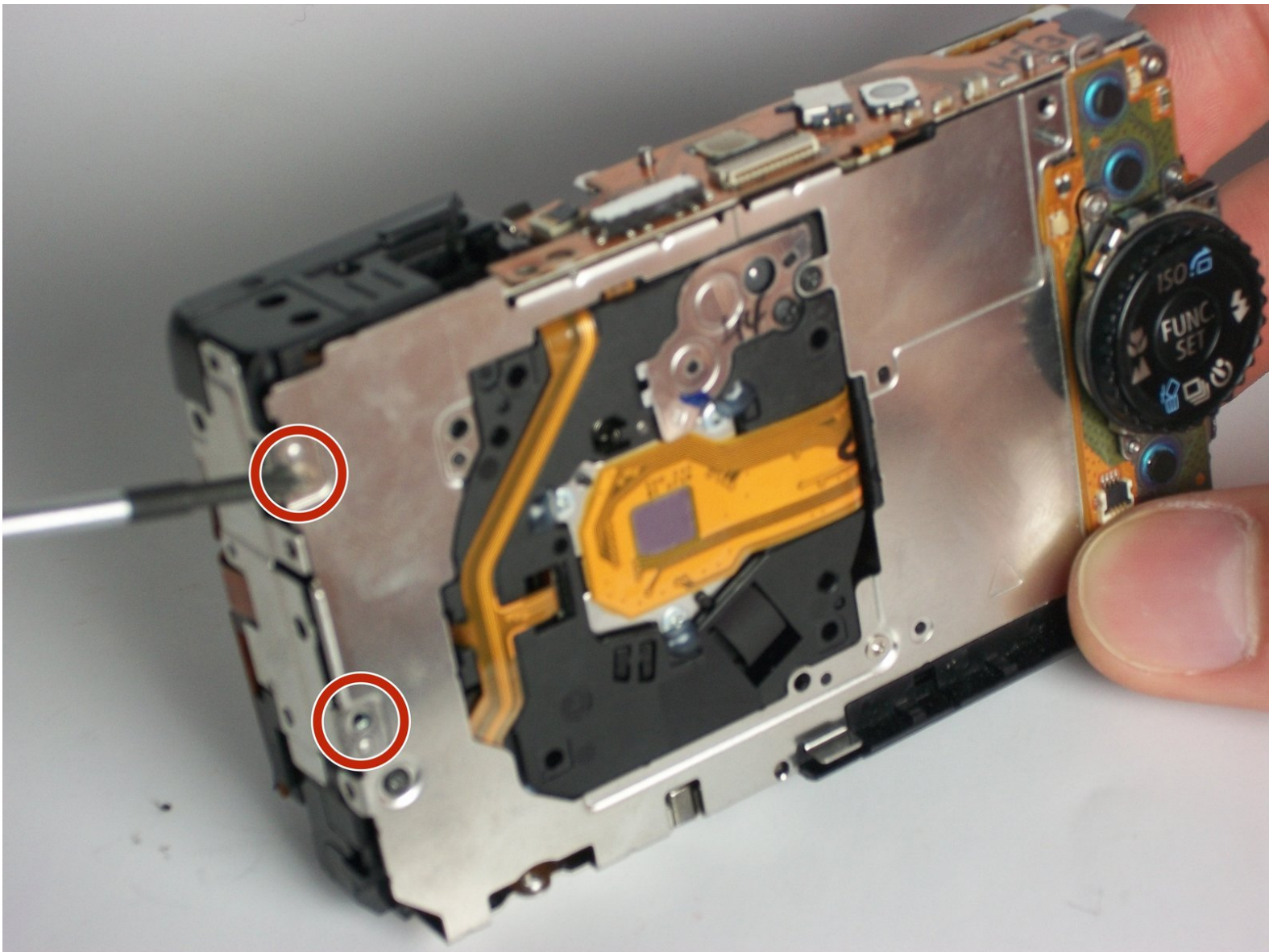




Canon Powershot SD880 Flash Replacement

This guide will provide you with the necessary...

Written By: Robert Manno



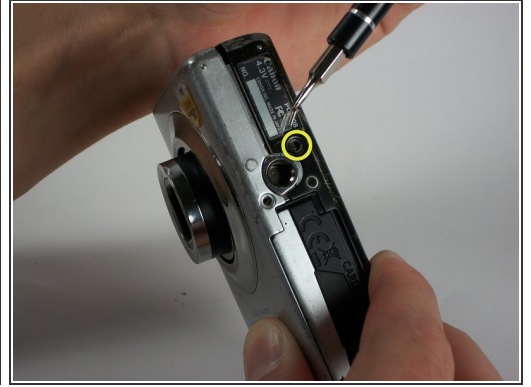
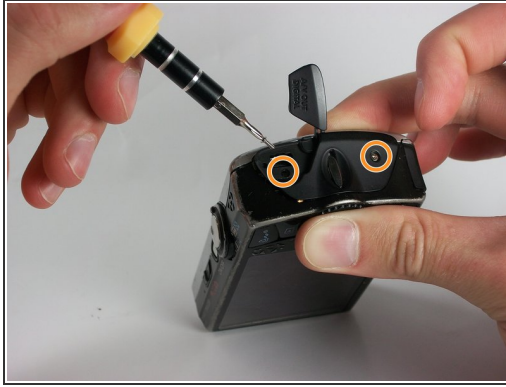
INTRODUCTION

This guide will provide you with the necessary direction to disassemble the flash on a Canon Powershot SD880. Before you start, know that the flash device has a few delicate connections and should be handled with care.

TOOLS:

- [Phillips #00 Screwdriver](#) (1)
 - [Phillips #0 Screwdriver](#) (1)
 - [Tweezers](#) (1)
-

Step 1 — Back Cover



- Remove the two 2.4 mm screws on the side of the camera that are next to the LCD screen using a Phillips #00 screwdriver.
- Remove the two 4.1 mm screws on the other side using a Phillips #00 screwdriver.
 - ⓘ One screw will be located under the rubber USB flap.
- Remove the single 2.6 mm screw from the bottom of the camera using a Phillips #00 screwdriver.
- Slowly pull the back cover off of the camera.

Step 2 — Front Cover



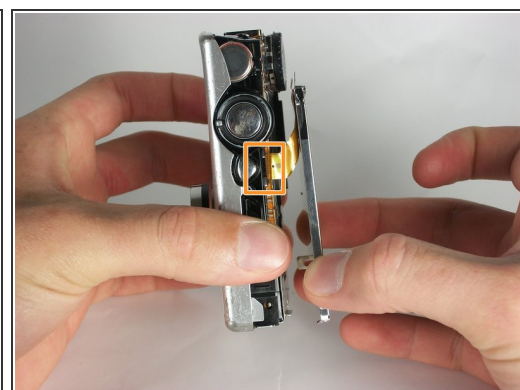
- Remove the 2.6 mm screw from the bottom of the camera using a Phillips #00 screwdriver.
 - Remove the 4.1 mm screw from the menu button side of the camera using a Phillips #00 screwdriver.
- i** The two screws on the other side of the camera were already removed when the back cover was taken off.

Step 3 — Top Panel



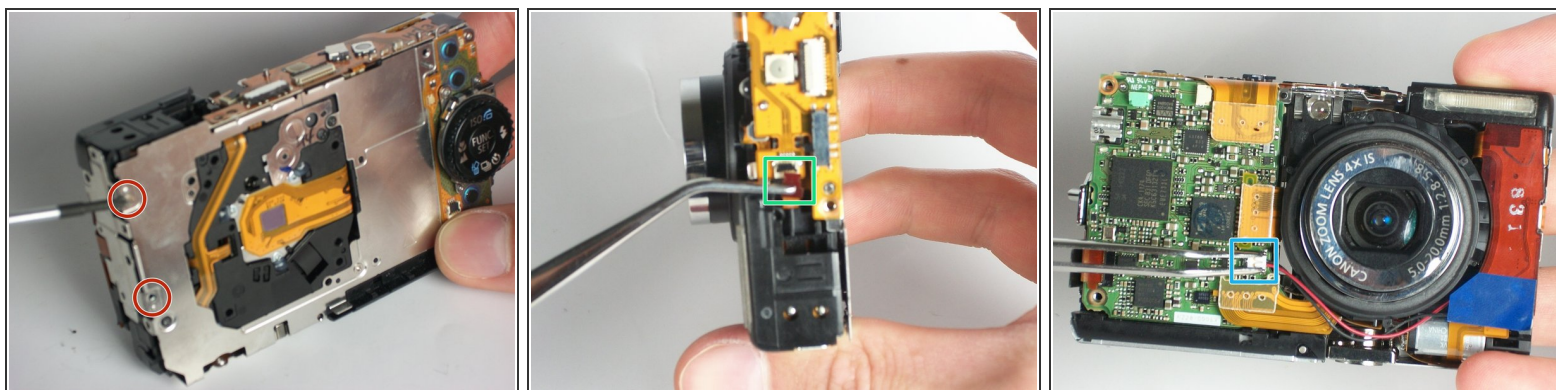
- Unplug the green and white plugs that connect the top panel to the top of the logic board.
- Dislodge the tab above the lens.
- Dislodge the tab at the back.

Step 4 — LCD Display



- Remove the two 2.9 mm screws at the top-right corner and bottom-left corner of the LCD screen using a Phillips #0 screwdriver.
- Disconnect the ribbons that connect the screen to the camera.
- Lift the screen off.

Step 5 — Flash



⚠ Use caution when removing the flash, as the capacitor may still have a charge.

- Remove two 1.8 mm screws from the back using a Phillips #0 screwdriver to disconnect the metal guard.
- To unplug the ribbon at the top of the camera, gently pull it from the plug-in point.
- Disconnect the white plug from the red and black wires.

To reassemble your device, follow these instructions in reverse order.