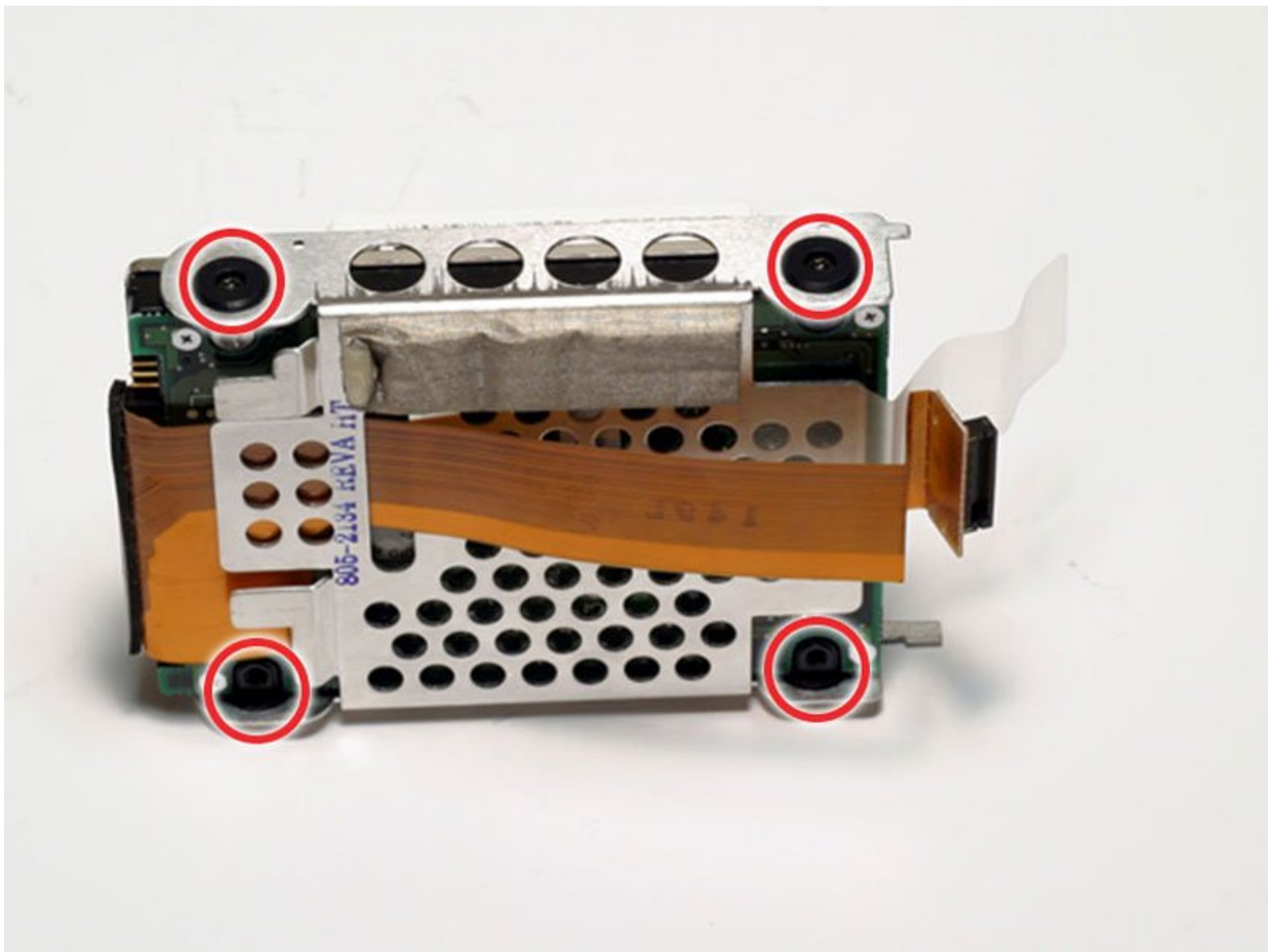




PowerBook G3 Lombard Hard Drive Replacement

Replace the hard drive in your PowerBook G3 Lombard.

Written By: iRobot



INTRODUCTION

You can install hard drives up to 12.5mm thick.



TOOLS:

- [Anti-Static Wrist Strap](#) (1)
- [Phillips #0 Screwdriver](#) (1)
- [Spudger](#) (1)
- [T8 Torx Screwdriver](#) (1)



PARTS:

- [120 GB 5400 RPM Western Digital ATA Hard Drive \(New\)](#) (1)
- [G3 Lombard Hard Drive Bracket](#) (1)

Step 1 — Keyboard



- Turn the computer so that the ports are facing you.
- If the keyboard is locked, open the port cover and turn the keyboard locking screw until the keyboard is unlocked.

Step 2



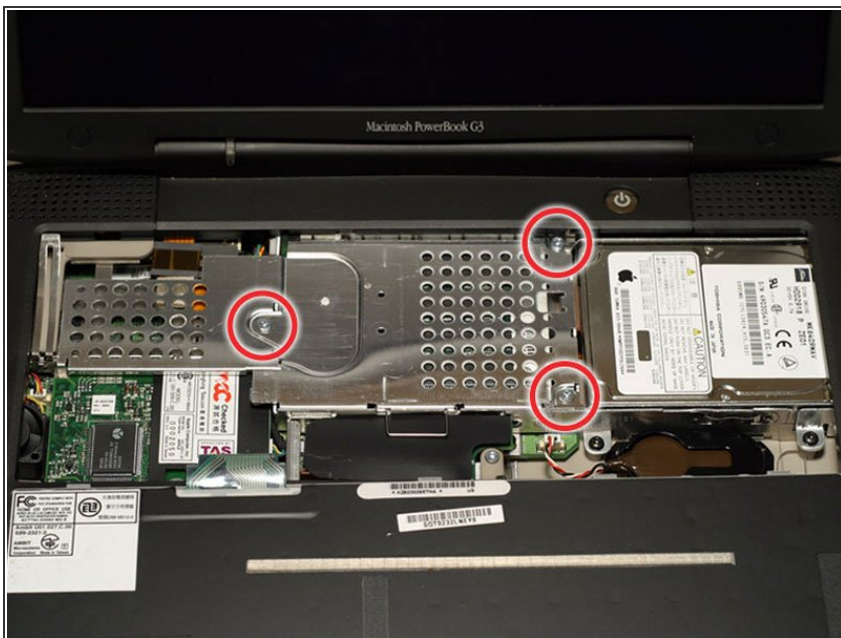
- Pull the keyboard release tabs toward you and lift up on the keyboard until it pops free.
- ⓘ Make sure you have removed the laptop battery and CD/DVD module from the expansion bays before proceeding.

Step 3



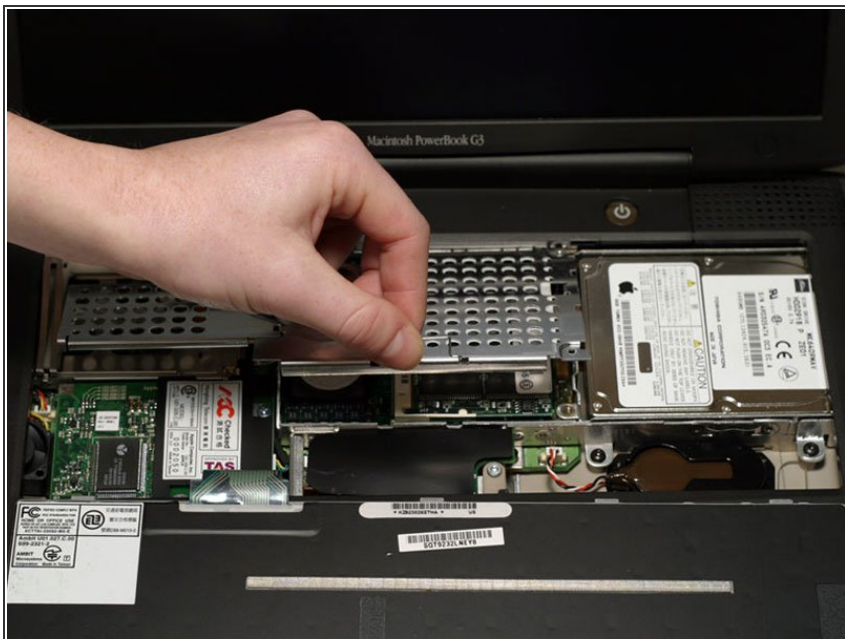
- Lift the keyboard out by pulling it up and away from you. Rest the keyboard, face down, on top of the trackpad.
- ⓘ In order to replace the keyboard, you must first remove the modem.

Step 4 — Heat Shield



- Remove the three silver Phillips screws that attach the heat shield to the internal metal framework.

Step 5



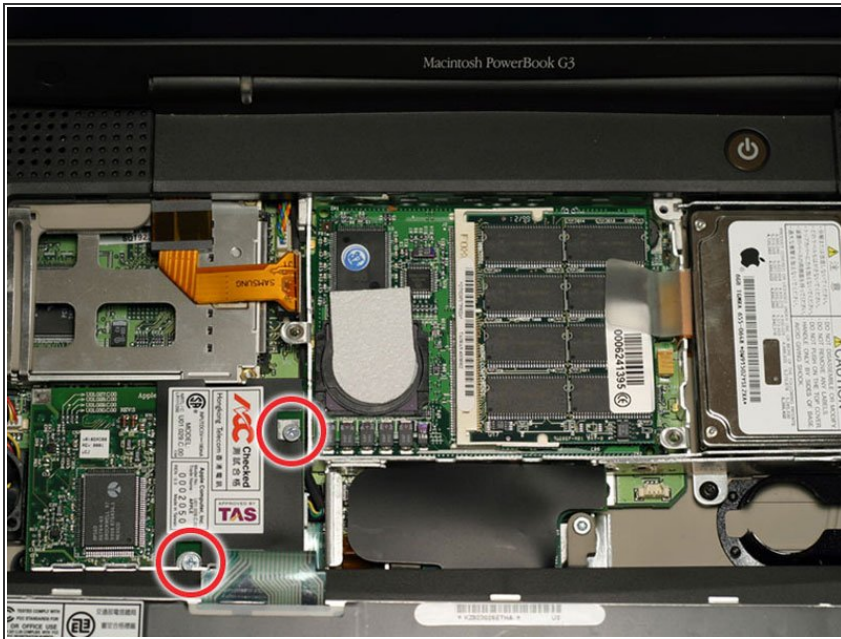
- Lift the heat shield up and pull it toward you.

Step 6



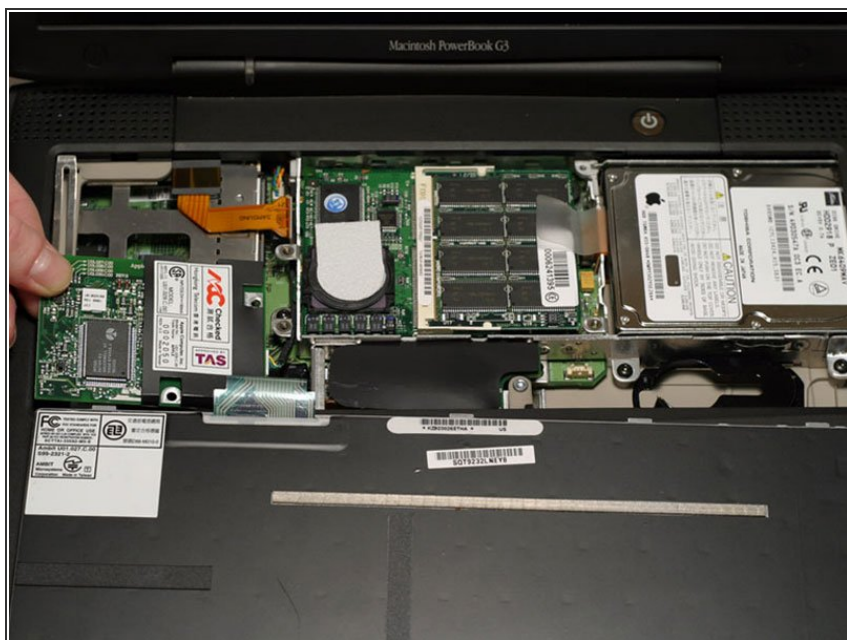
- Your laptop should look approximately like this.

Step 7 — Modem



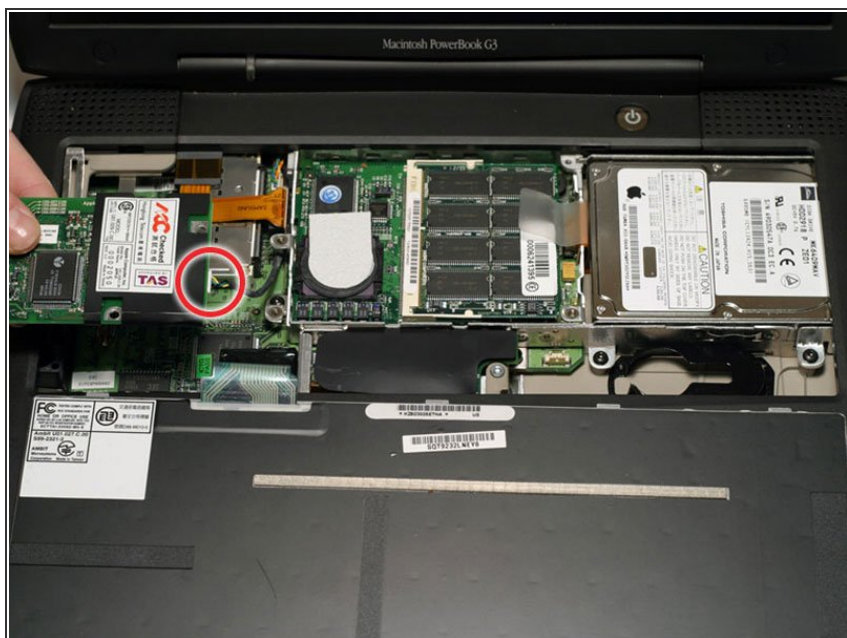
- Remove the two silver Phillips screws from the modem.

Step 8



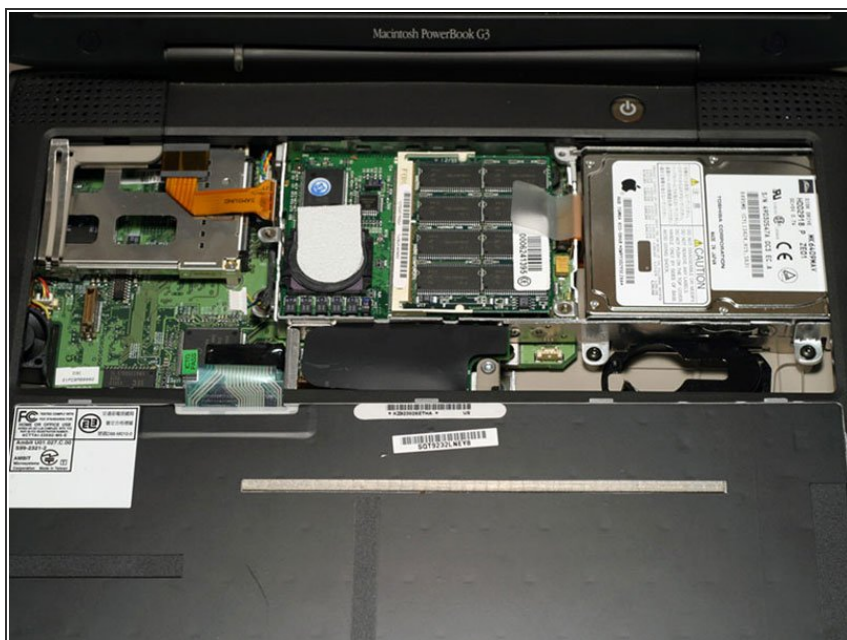
- Use a spudger, the tips of your fingers, or a flat non-metal tool to get under the modem's edge and pry it up from its socket as shown in the picture.

Step 9



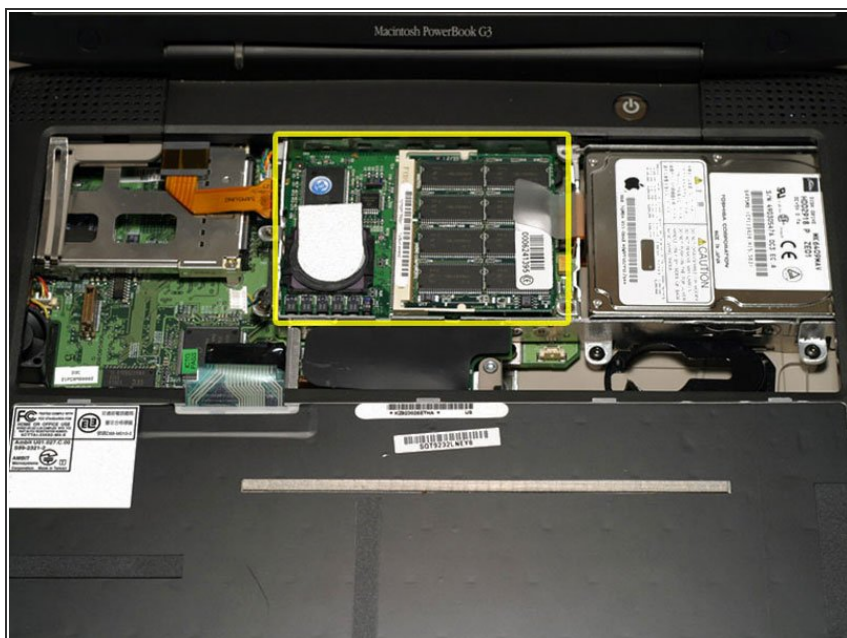
- Disconnect the cable from the right side of the modem.

Step 10



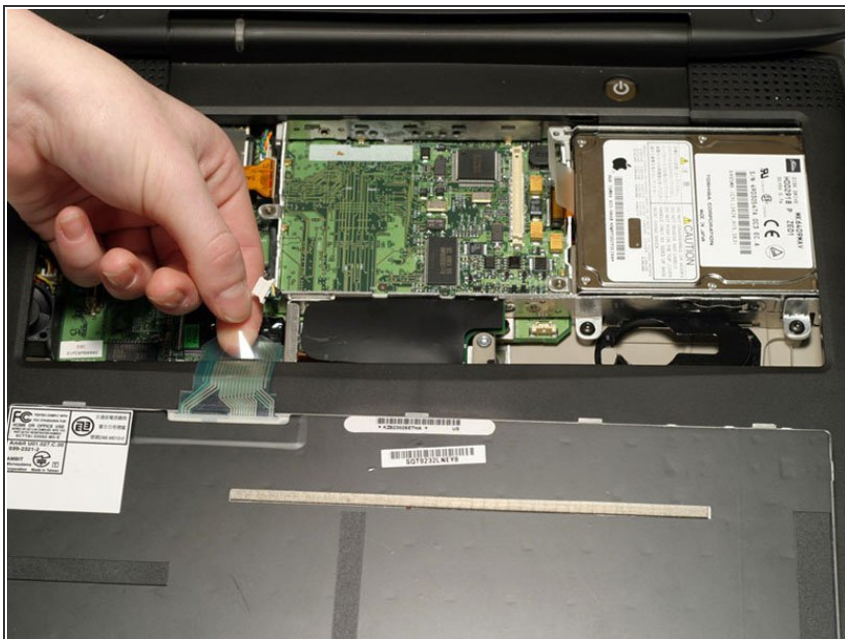
- Your laptop should look approximately like this.

Step 11 — Processor



- Use a spudger, the tips of your fingers, or a flat non-metal tool to pry up the processor's right side.

Step 12



- Disconnect the keyboard cable from the logic board by pulling directly up on the clear plastic loop.
- ⓘ This step is out of sequence with the keyboard because in order to remove the keyboard you must first remove the modem.

Step 13



- Your laptop should look approximately like this.

Step 14 — Hard Drive



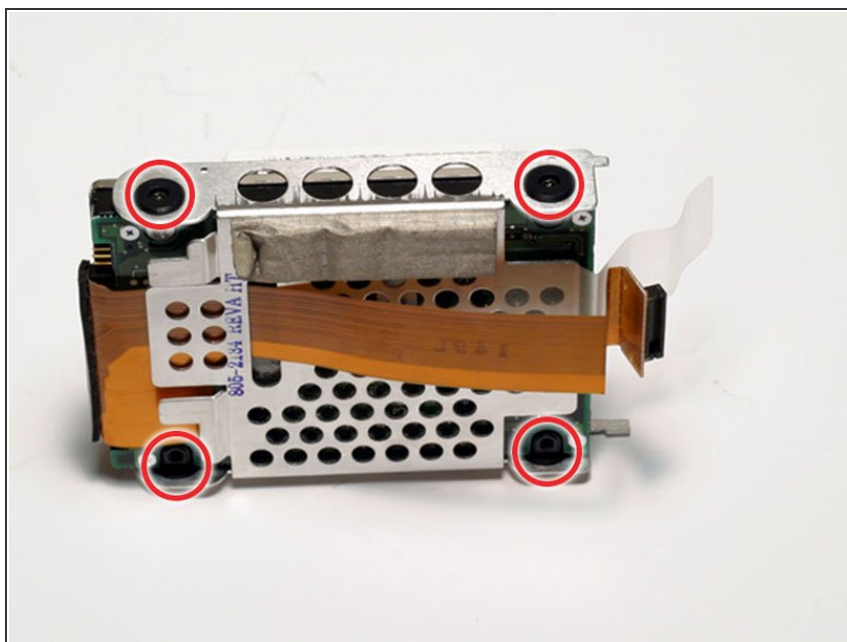
- Grasp the orange cable at the left end of the hard drive and disconnect it from the logic board.
- ❗ Try to grasp the cable on the plastic connector rather than on the flexible cable section.

Step 15



- Grasp the plastic tab and pull the hard drive up and to the left, making sure that the metal bracket doesn't catch on the black plastic casing.

Step 16 — Hard Drive



- Remove the four black Torx screws located at the four corners of the hard drive bracket.

Step 17



- Pull the connector cable out from the hard drive, applying even pressure while gently rocking up and down.
- ⚠ Be very careful to apply even pressure when removing the cable. If you torque too hard to either side, you may damage or destroy the hard drive's connector pins, rendering your data inaccessible.

To reassemble your device, follow these instructions in reverse order.