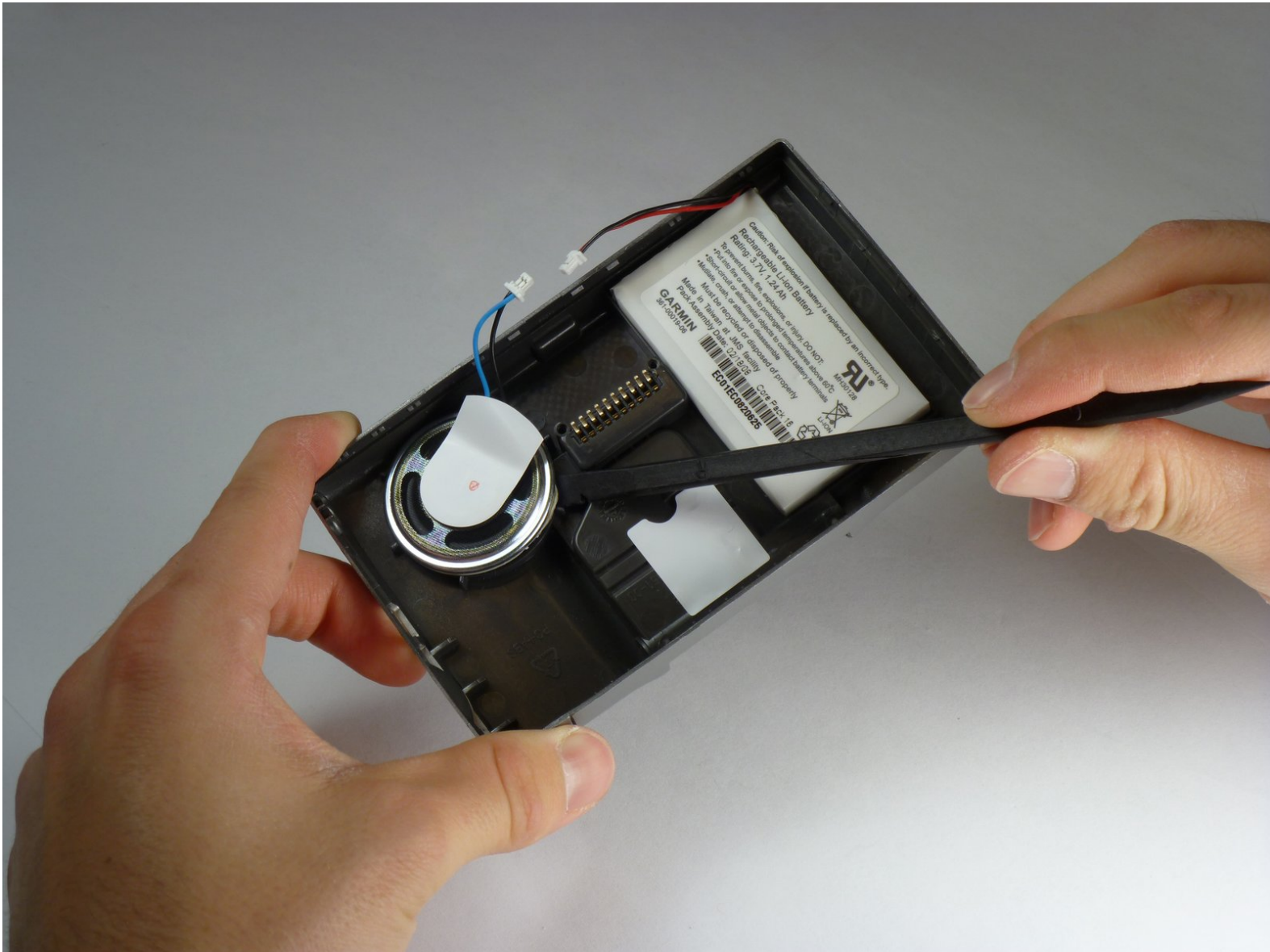




Garmin Nuvi 680 Speaker Replacement

A step-by-step guide to replacing the speaker...

Written By: Chris Marzano



INTRODUCTION

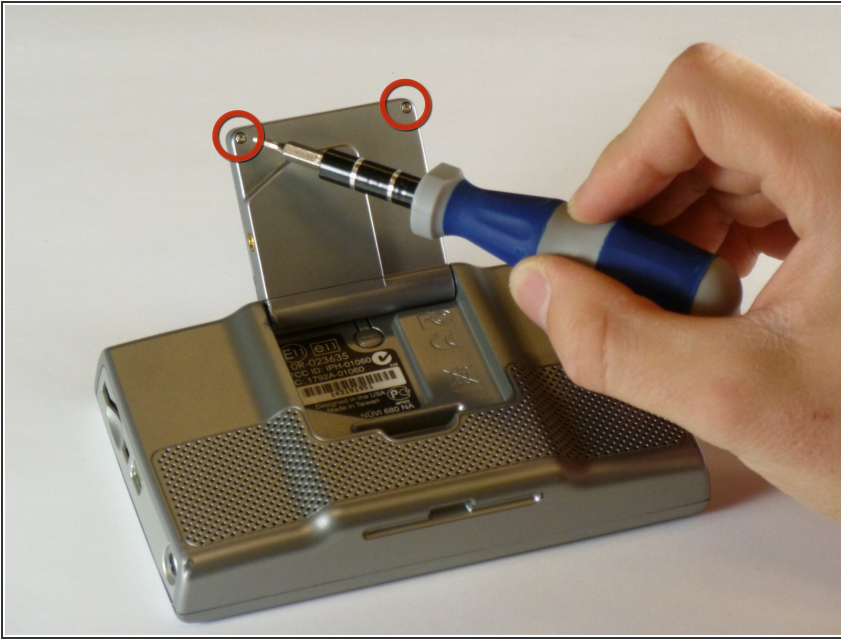
A step-by-step guide to replacing the speaker in the Garmin Nuvi 680.



TOOLS:

- [iFixit Opening Tool](#) (1)
 - [Spudger](#) (1)
 - [T5 Torx Screwdriver](#) (1)
 - [Phillips #1 Screwdriver](#) (1)
-

Step 1 — Outer Case



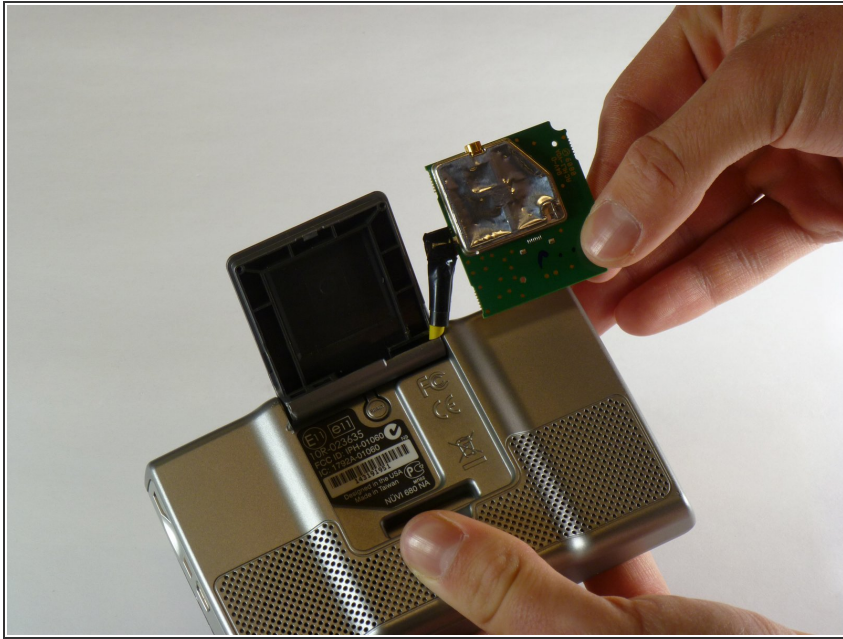
- Flip open the antenna on the back of the device.
- Remove the two 4.42 mm screws on the antenna cover using a T5 Torx screwdriver.

Step 2



- Remove the antenna cover.

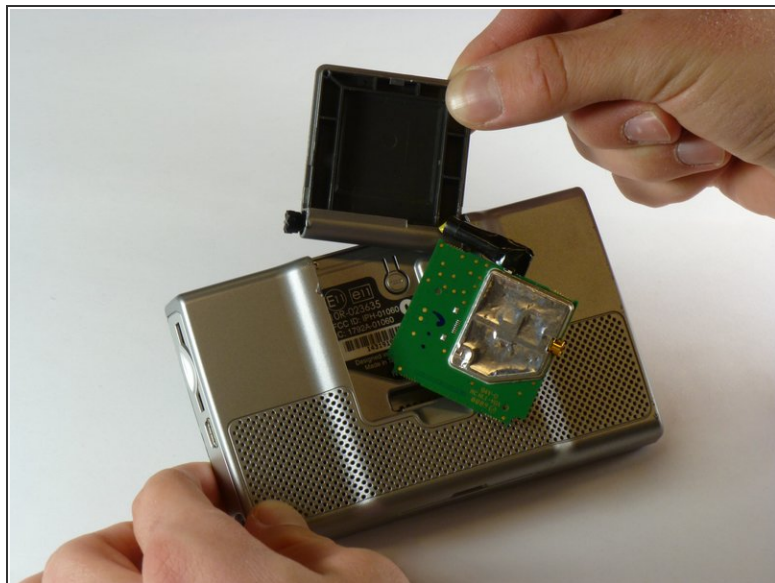
Step 3



⚠ The yellow wire is connected to the motherboard, so you cannot disconnect it until you finish opening the device.

- Pull the antenna circuit board out of its case.

Step 4



- Insert the pointed end of a spudger into the leftmost slit of the antenna case.

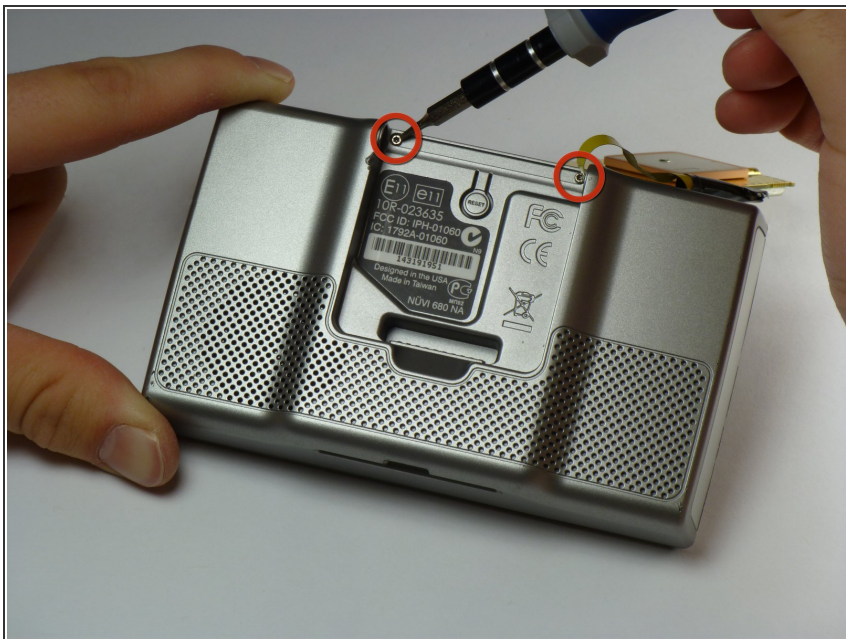
- Push the spudger to the right.

⚠ Slide the antenna case out slowly or you may lose the antenna's spring. The spring is inside the black plastic that holds the antenna case to the device.

- Slide the antenna case out of the device.

🔧 Reinstallation tip: first reassemble the antenna casing (place antenna back into its plastic cover), and then re-insert the entire assembly back into the GPS body.

Step 5



- Remove the two screws on the back of the outer case using a T5 Torx screwdriver.
- These screws are 10.82 mm long.

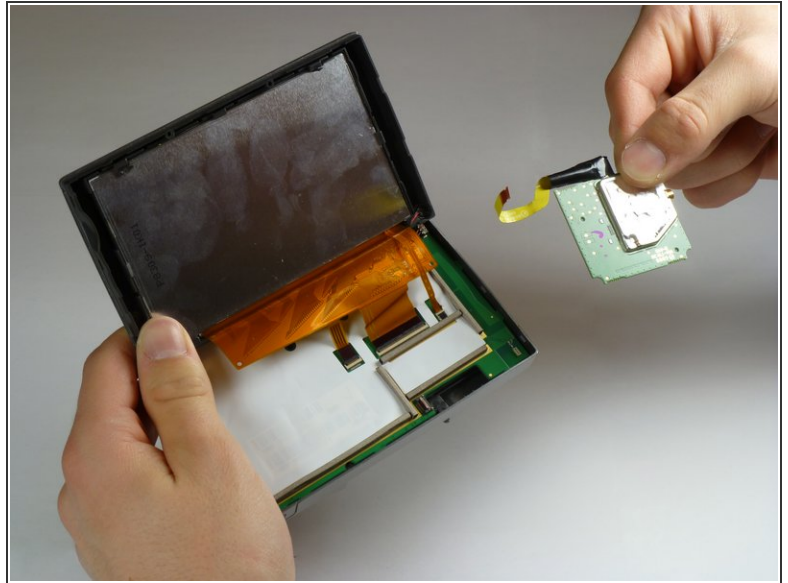
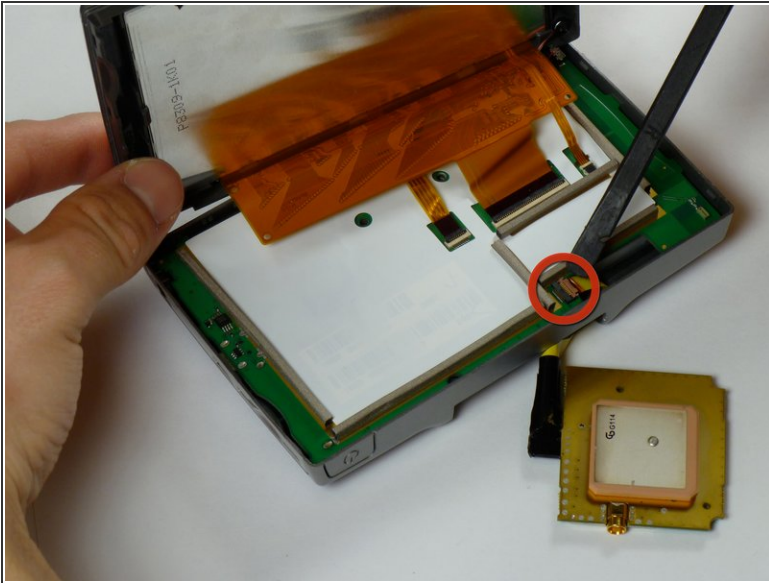
Step 6



⚠ Gently pull apart the front and back of the device. The front and back are still connected by ribbon cables.

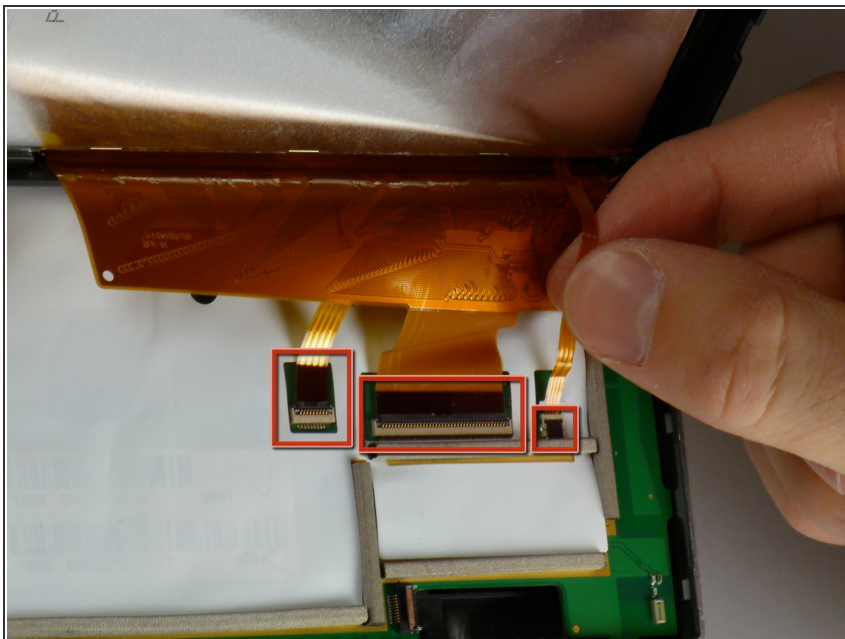
- Starting along the top, separate the front and back of the device by pushing an iPod-opening tool into the crack along each side of the case.

Step 7 — Antenna



- Use a spudger to disconnect the yellow antenna wire from the ZIF connector by opening the brown latch holding the wire in place.
- Remove the antenna.

Step 8 — Screen Wiring

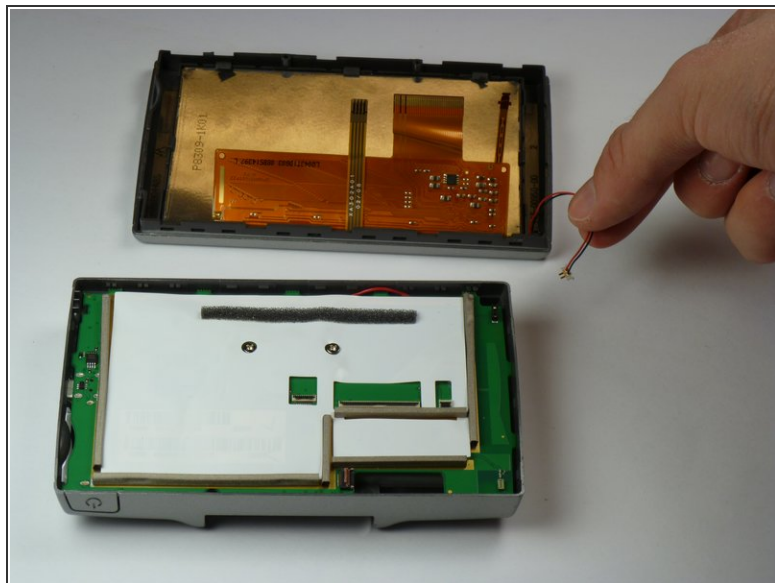
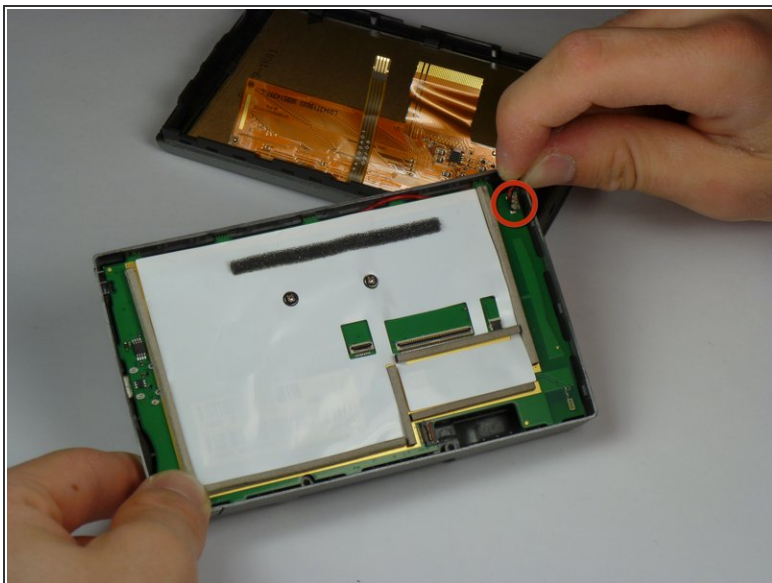


⚠ Do not remove the ribbon cables without lifting the latch or the cable will be damaged.

- Lift the latches on the ribbon cable connectors. All the ribbon cables may have latches. The right most latch may have a latch that flips in the opposite direction from the others.
- Gently pull the ribbon cables out of their connectors. They should slide out easily.

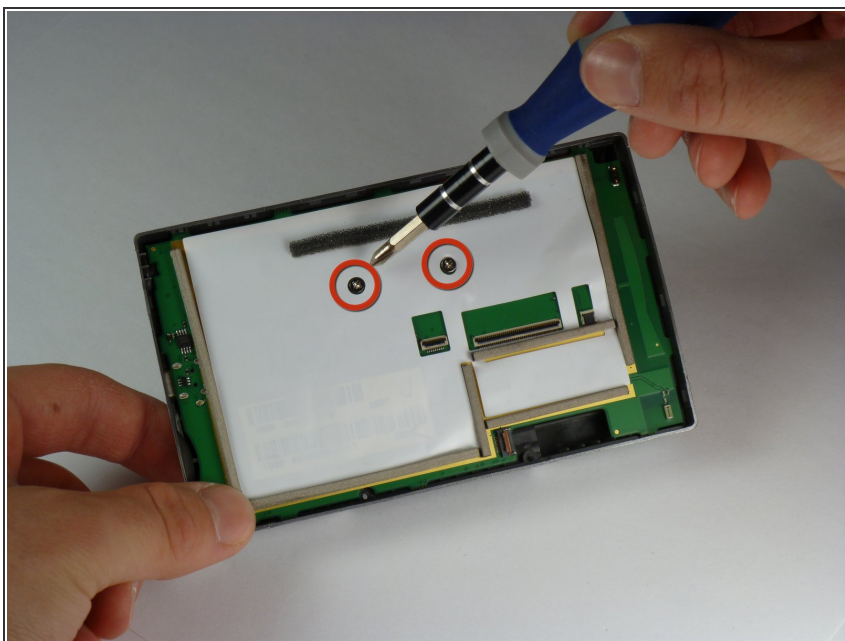
⚠ Do not separate the two halves of the device yet or the on/off cable may be severed.

Step 9



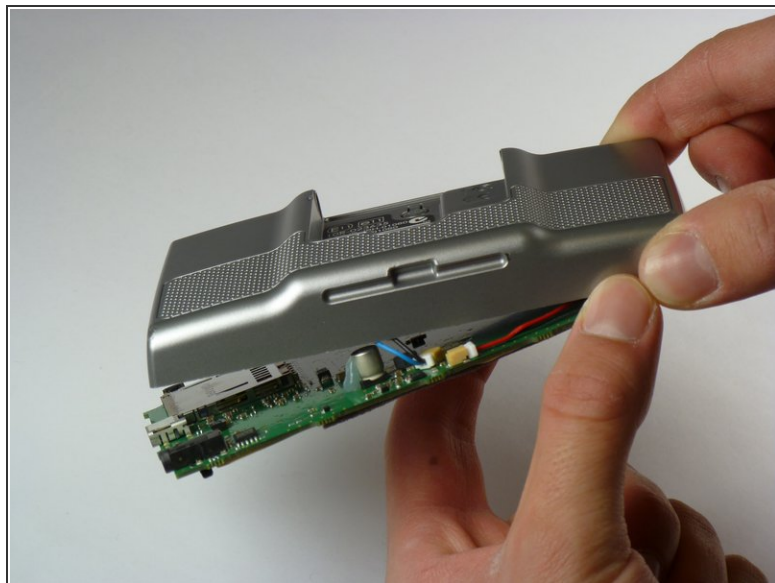
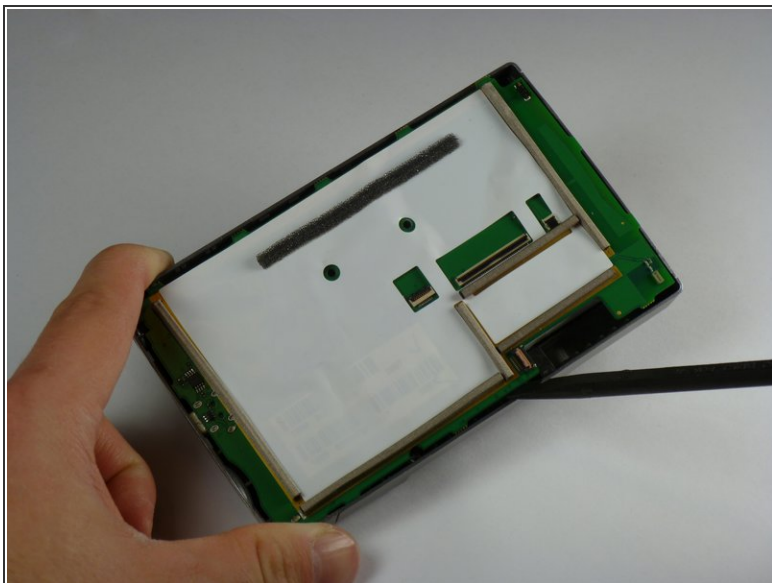
- Gently pull the cable for the on/off button straight up to remove it.
- The two halves of the device may now be separated.

Step 10 — Motherboard



- Use a PH1 sized Philips screwdriver to remove the two screws shown.
- These screws are 6.88 mm long

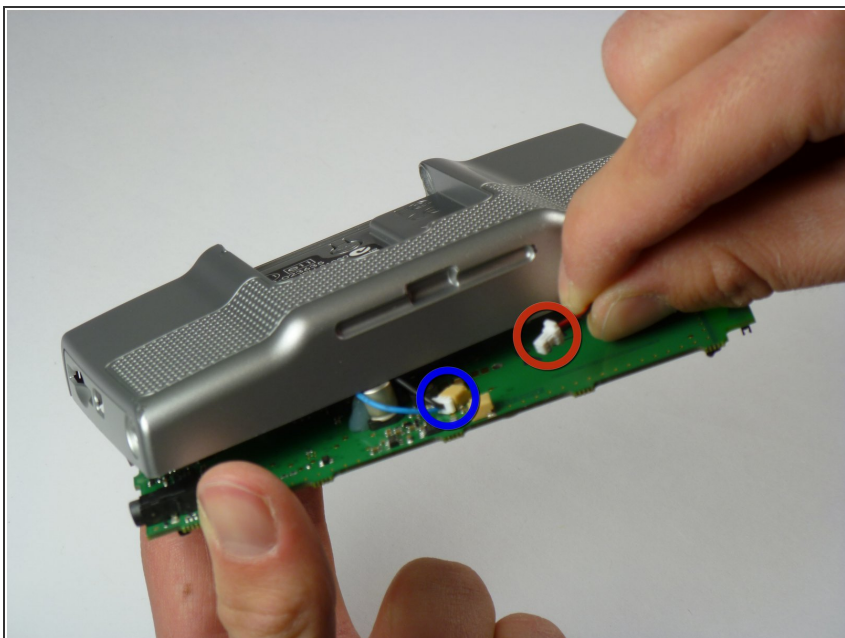
Step 11



⚠ Carefully separate the motherboard from the outer case or the speaker and battery cables may be damaged.

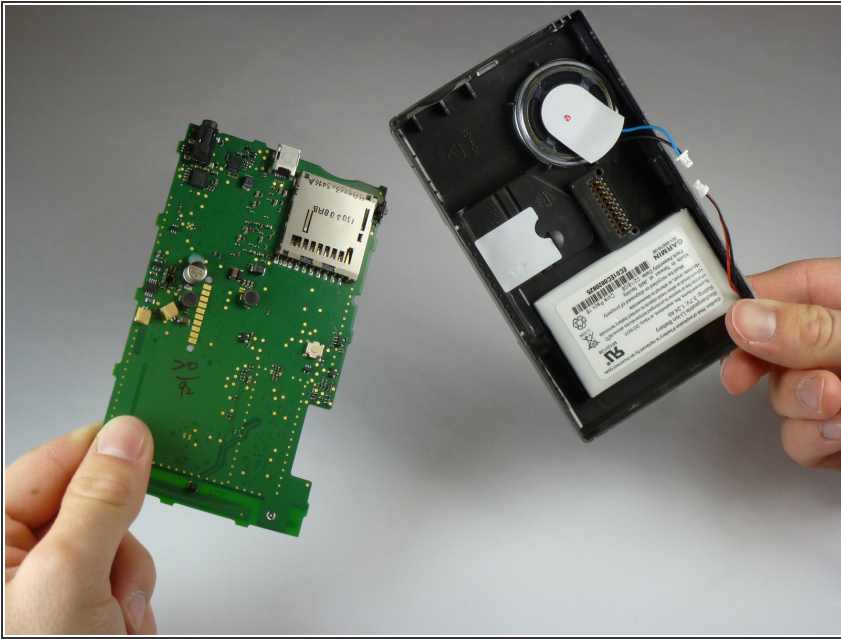
- Use a spudger to lift the edge of the motherboard.

Step 12



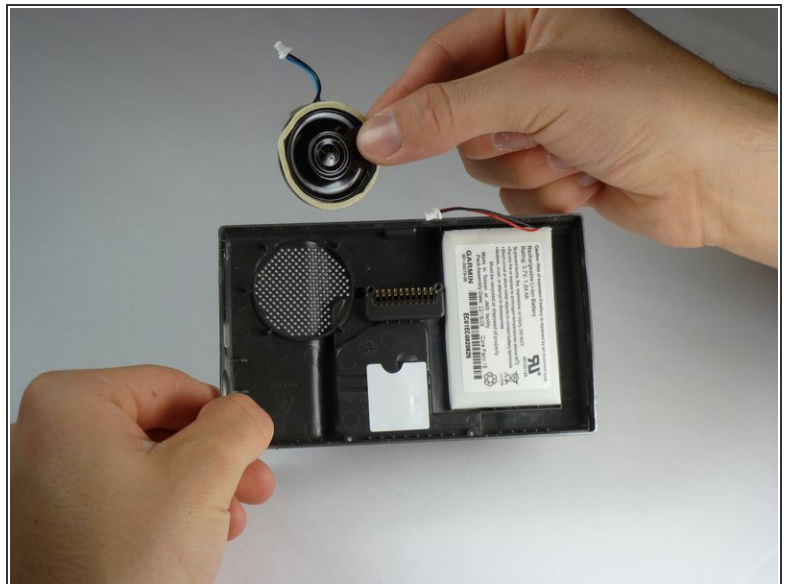
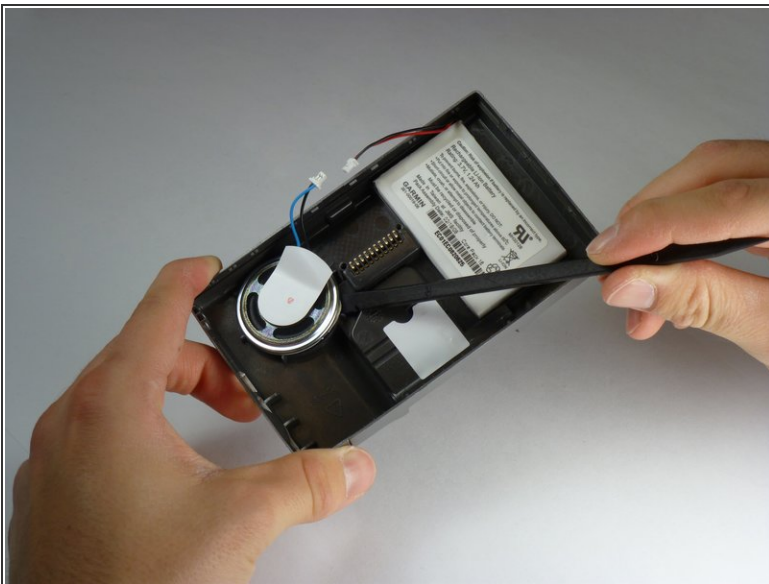
- Gently unplug the cable for the battery
- Gently unplug the cable for the speaker.

Step 13



- Lift the motherboard out of the outer case.

Step 14 — Speaker



- Use a spudger to gently pry the speaker out of its slot.
- Remove the speaker.

To reassemble your device, follow these instructions in reverse order.