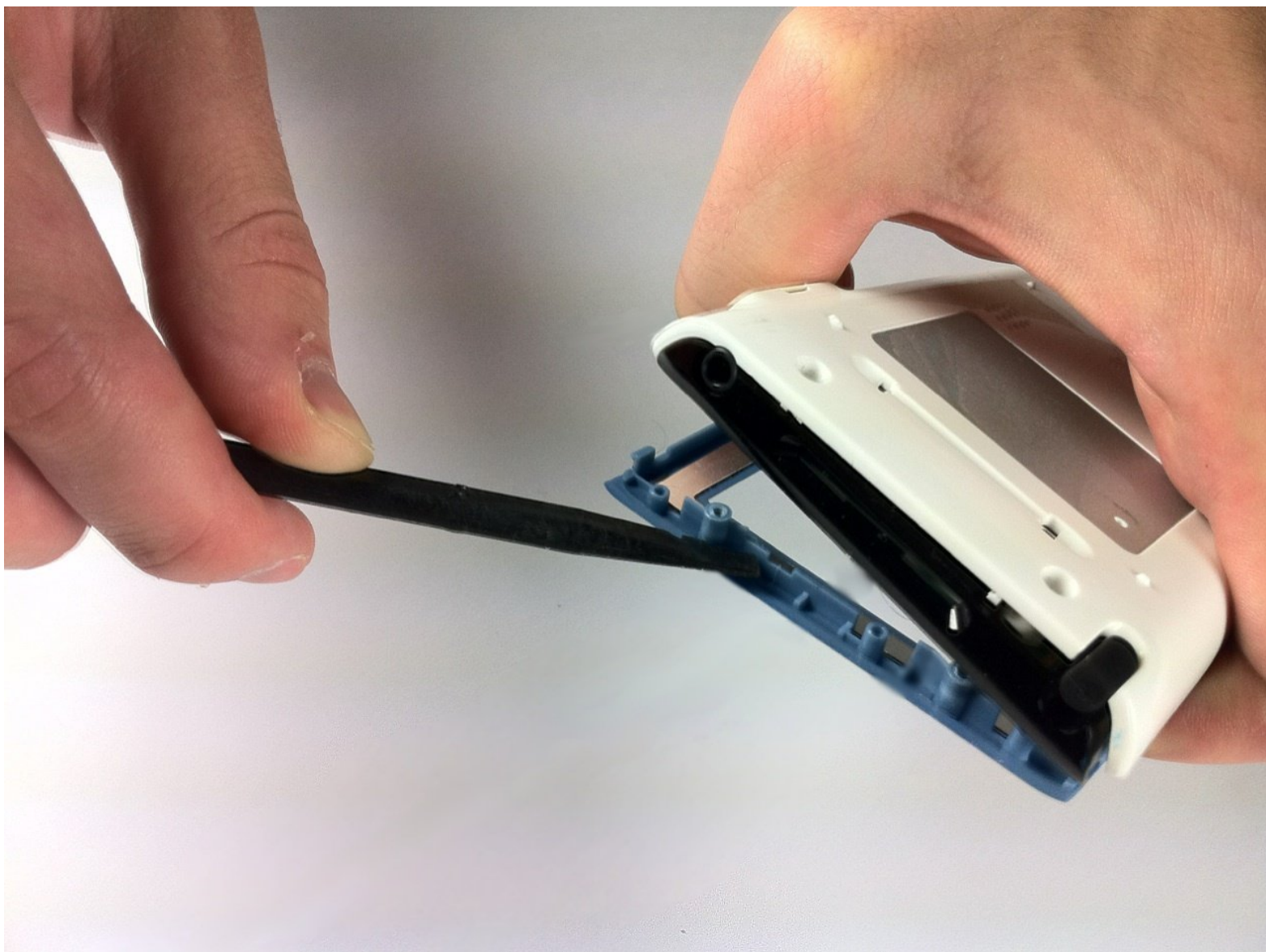




# Palm Zire 31 Case Replacement

Taking off the case of the Zire 31.

Written By: Antonio





## TOOLS:

- [Phillips #00 Screwdriver](#) (1)
- [Spudger](#) (1)
- [T6 Torx Screwdriver](#) (1)

## Step 1 — Case



- Unscrew the two 7.35mm Torx T6 screws.

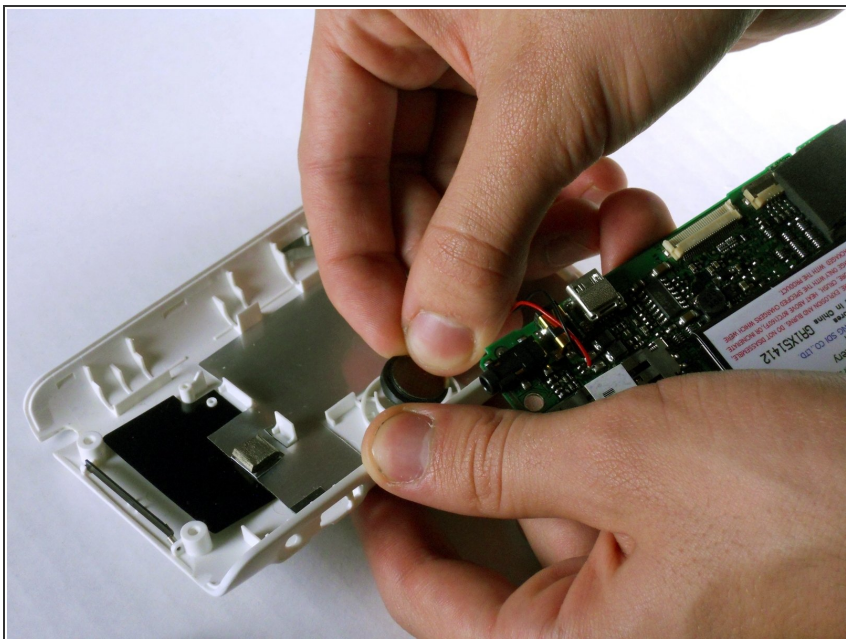
## Step 2



- Using the flat end of the spudger, carefully pry the black cover on the top from the blue front cover.

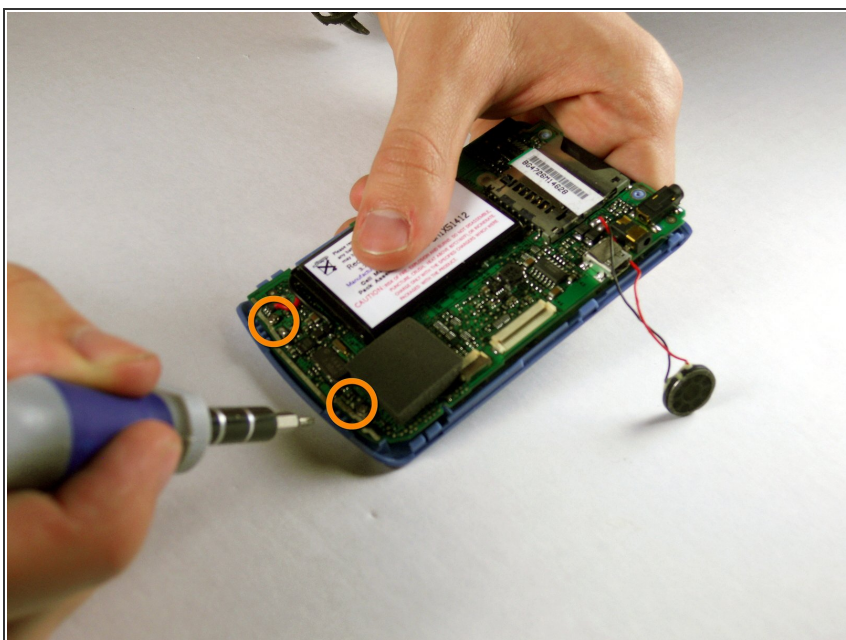


### Step 3



- Carefully remove the speaker from the back white cover by just pulling it gently. It is glued on.

### Step 4



- Unscrew the #00 5.75mm Phillips screws from the bottom of the motherboard. The front blue panel should fall right off.

To reassemble your device, follow these instructions in reverse order.