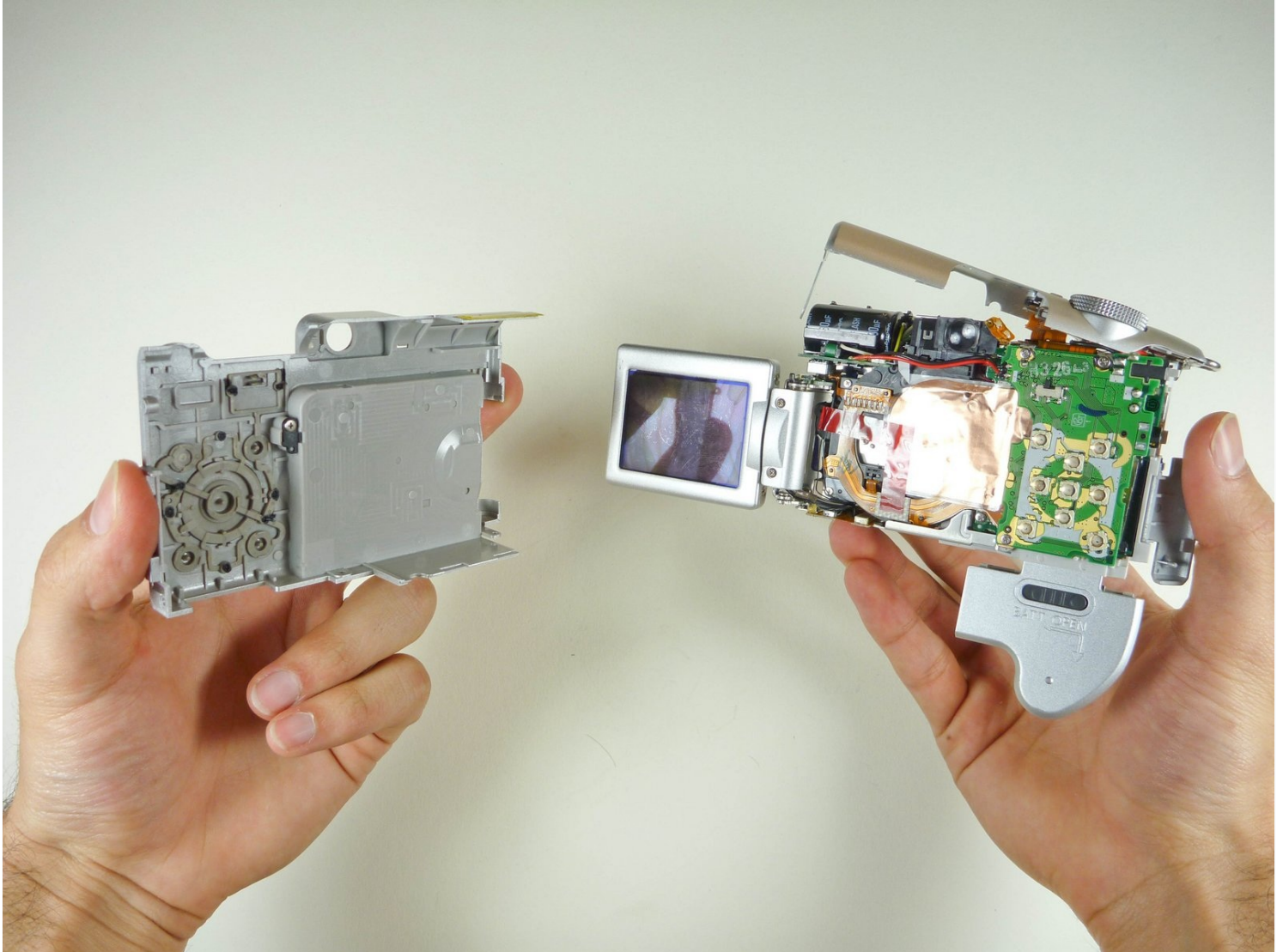




Canon Powershot A610 Camera Housing Replacement

This guide demonstrates how to replace the...

Written By: Matthew Ramirez



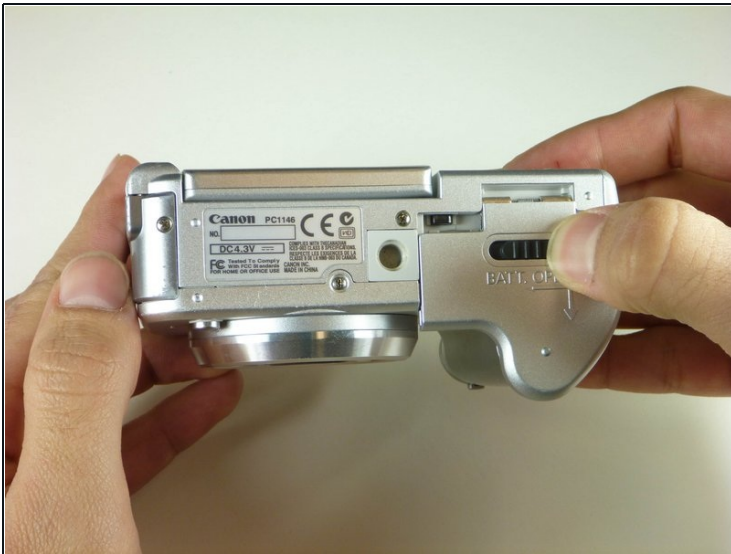
INTRODUCTION

This guide demonstrates how to replace the housing of a Canon Powershot A610. In order to get to the internals of the Canon A610, the plastic casing around the camera must be removed.

TOOLS:

Phillips #00 Screwdriver (1)

Step 1 — Batteries



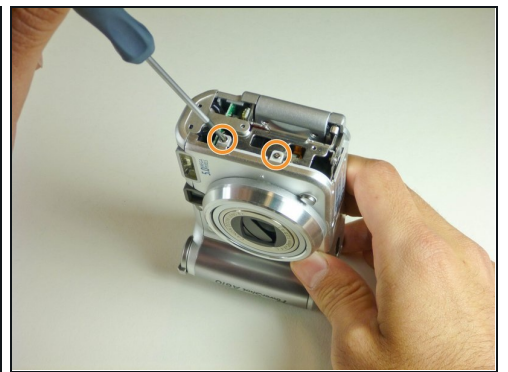
- Unlock the battery cover, while swinging the cover outward to open it.

Step 2



- Turn the camera over and allow the batteries to fall out.
- Close the battery cover.

Step 3 — Camera Housing



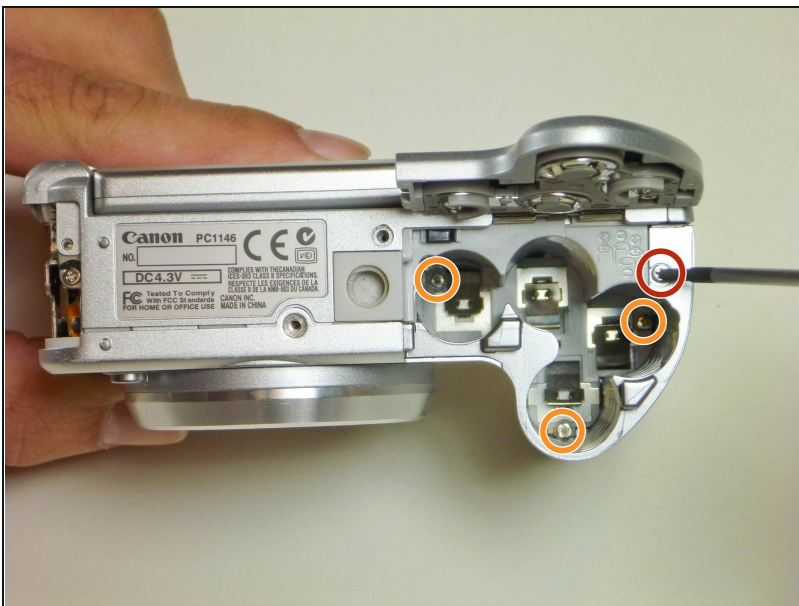
- Remove the three 3 mm screws that attach the side panel to the body of the camera.
- Using your fingernails, pull the side panel outward to remove it.
- Remove the two remaining 2 mm screws that attach to the frame of the camera.

Step 4



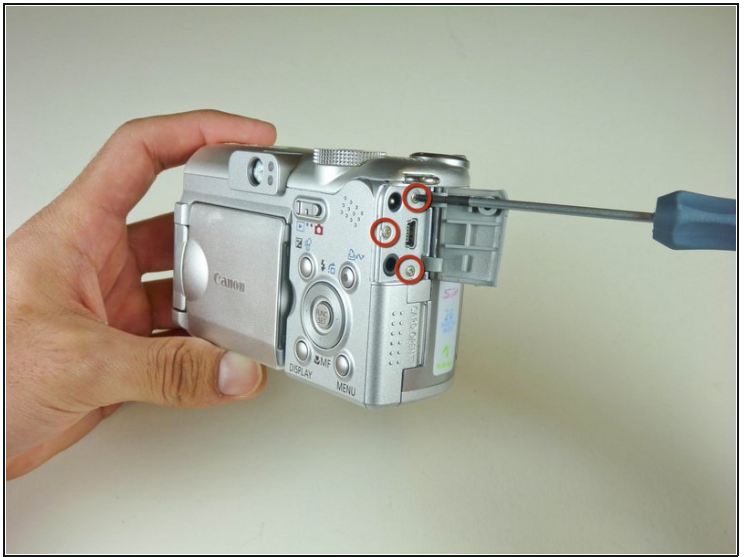
- Remove the 3 mm screw that sits at the bottom of the camera, near the front side.
- Remove the 4 mm screw that sits at the bottom of the camera, near the back side.

Step 5



- Open the battery cover.
- Remove the 5 mm screw that sits on the top of the battery slot.
- Remove the three 6 mm screws that sit at the bottom of the battery slot.
- Close the battery cover.

Step 6



- Open the digital A/V DC terminal cover.
 - Remove the three 4 mm screws.
 - Detach the digital A/V DC terminal.
- ☒ When you reassemble the camera, leave the topmost screw out until after you put the top casing back.

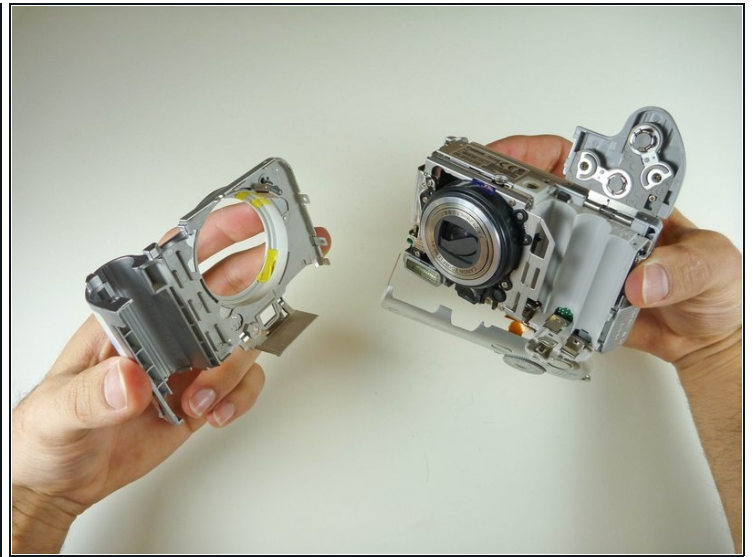
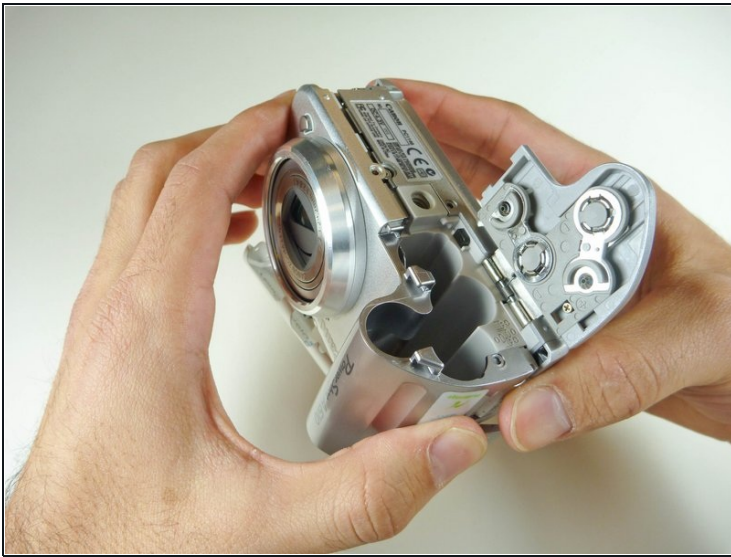
Step 7



- Grip the sides of the top cover and gently lift it until it detaches from the camera.

⚠ Do not completely remove the top cover; an orange ribbon cable still connects it to the camera.

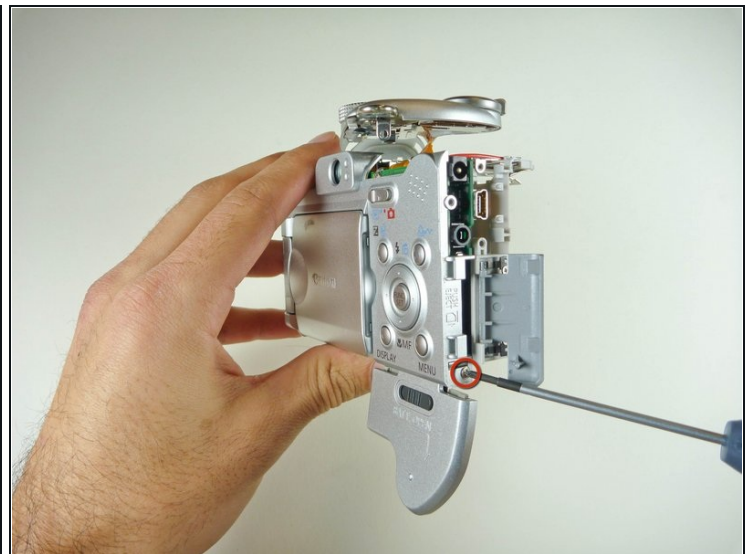
Step 8



- Open the battery cover.
- With the camera upside down, pull the side of the front case that is closest to you, in an outward movement.

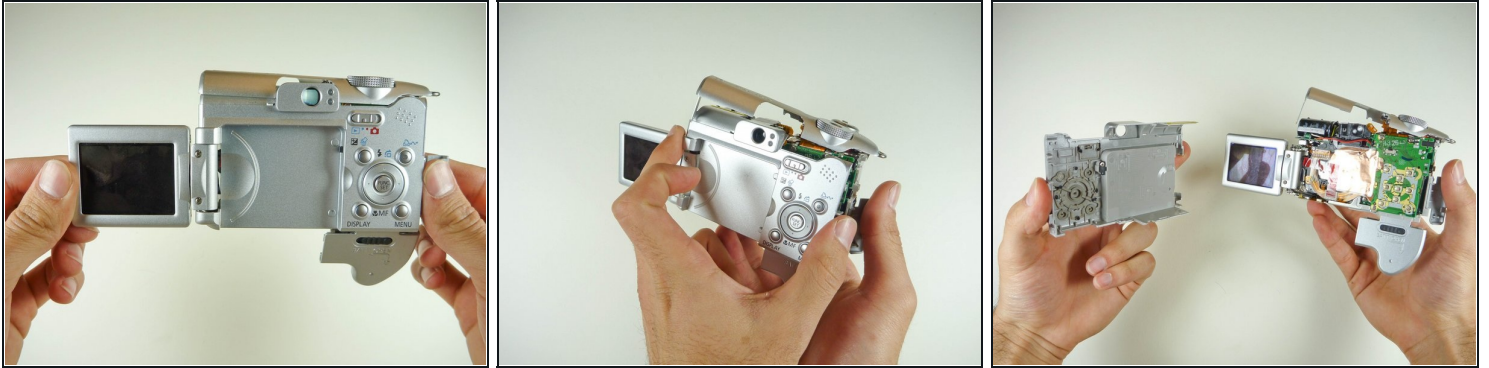
⚠ Apply some force, but pull the front case gently to prevent damage.

Step 9



- Open the memory card slot cover.
- Remove the 3 mm screw that sits near the bottom of the case.

Step 10



- Flip the LCD screen all the way open.
- Grip both sides of top of the back case and gently pull it, in an outward movement, until the case detaches.

To reassemble your device, follow these instructions in reverse order.