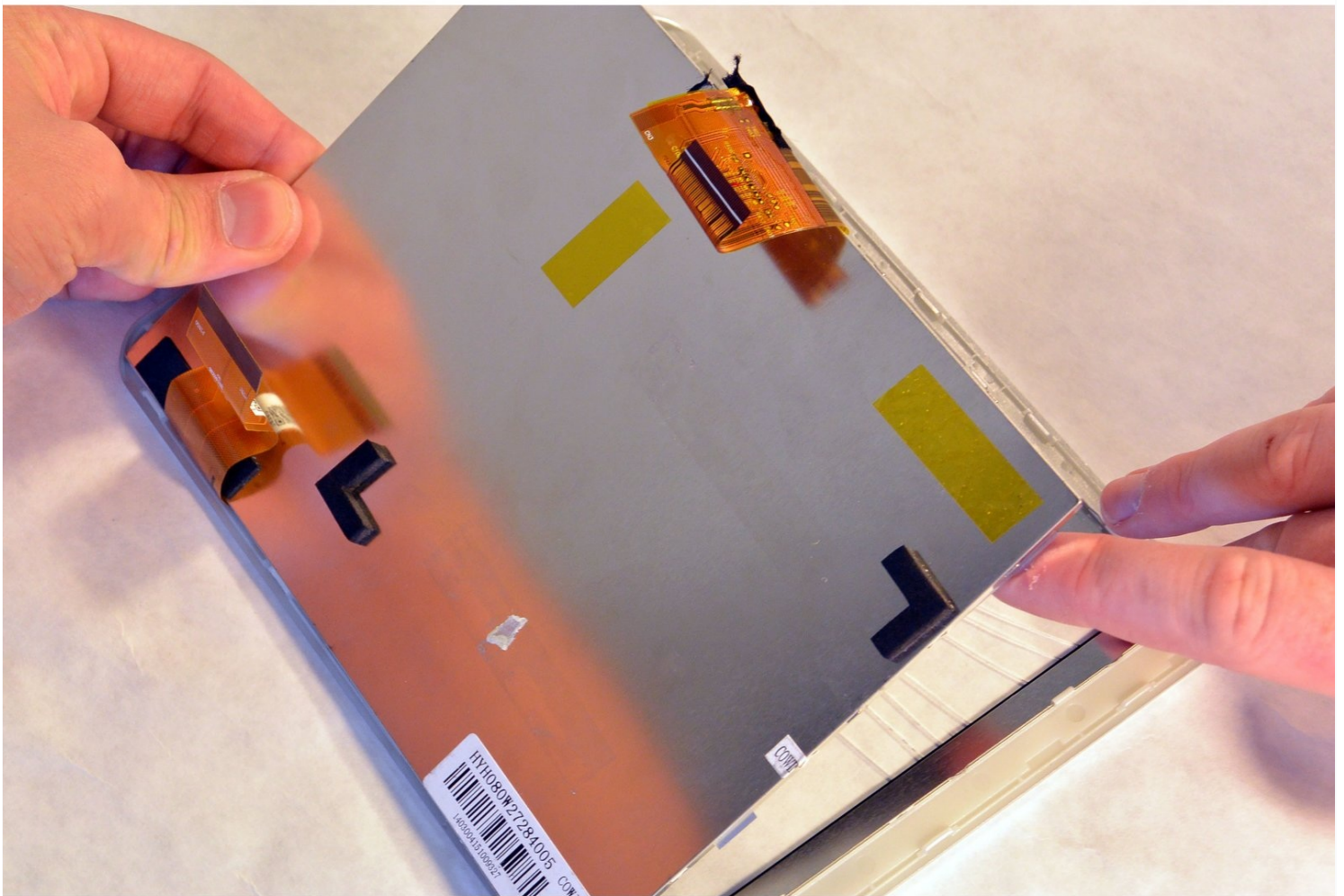




Zeki TBQG884B Digitizer Touch Screen

This guide requires three prerequisite guides...

Written By: David Wyman



INTRODUCTION

This guide requires three prerequisite guides for the proper replacement of the digitizer screen on the front of the Zeki tablet. Please, take a moment to familiarize yourself with those guides. They can be found in the details section of this guide.

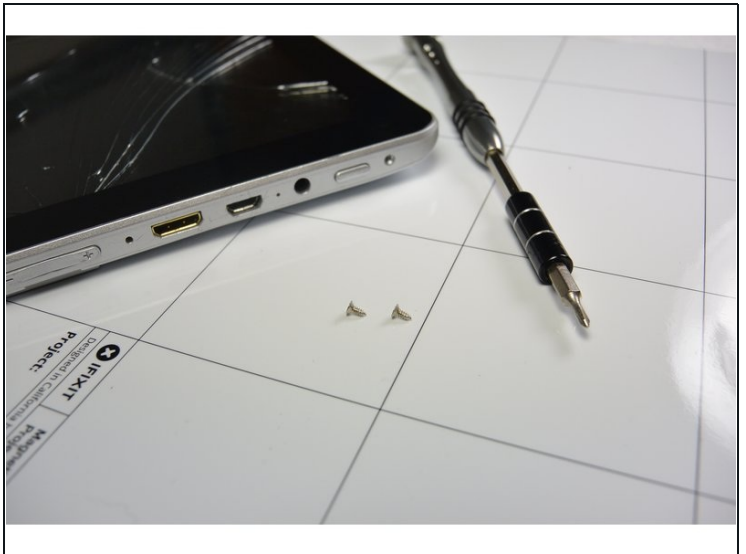
TOOLS:

[iFixit Opening Tool](#) (1)
[Phillips #1 Screwdriver](#) (1)
[Spudger](#) (1)
[64 Bit Driver Kit](#) (1)

PARTS:

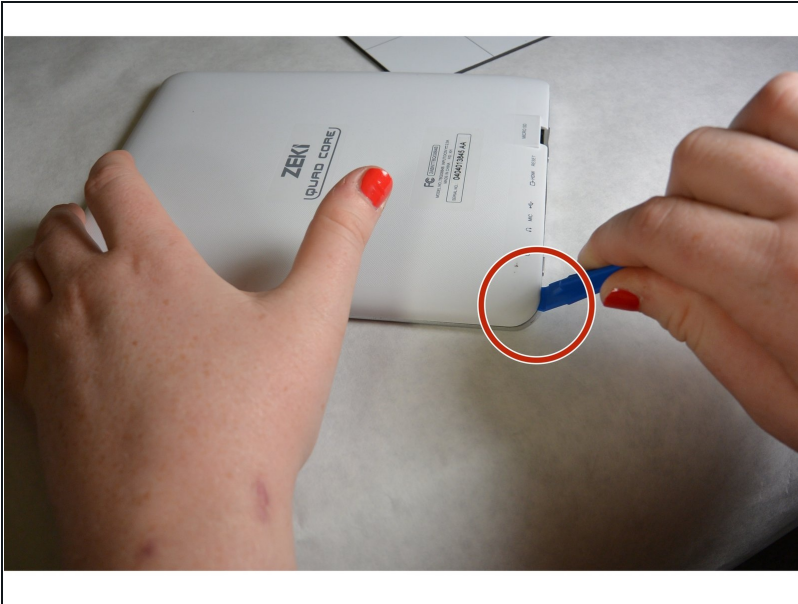
[Zeki TBQG884B Motherboard](#) (1)
[Replacement Zeki LCD Display](#) (1)
[Replacement Zeki Digitizer](#) (1)

Step 1 — Rear Case



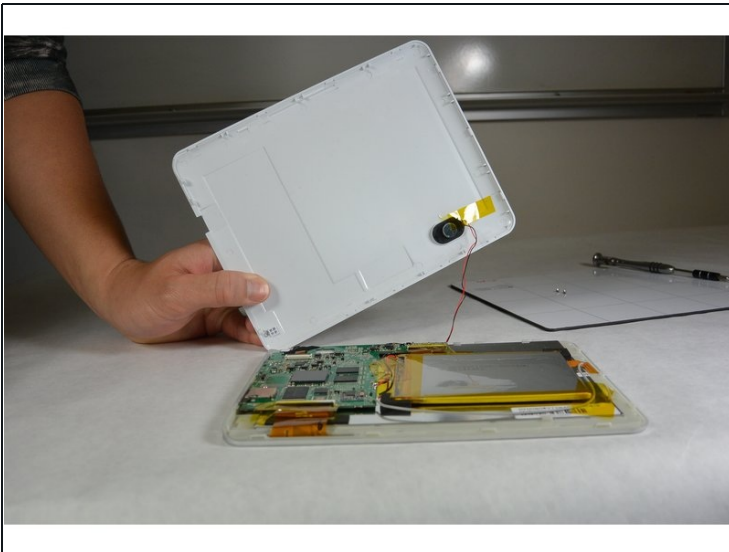
- Remove the two screws from the end of the device where the ports are located using a Phillips #1 screwdriver.

Step 2



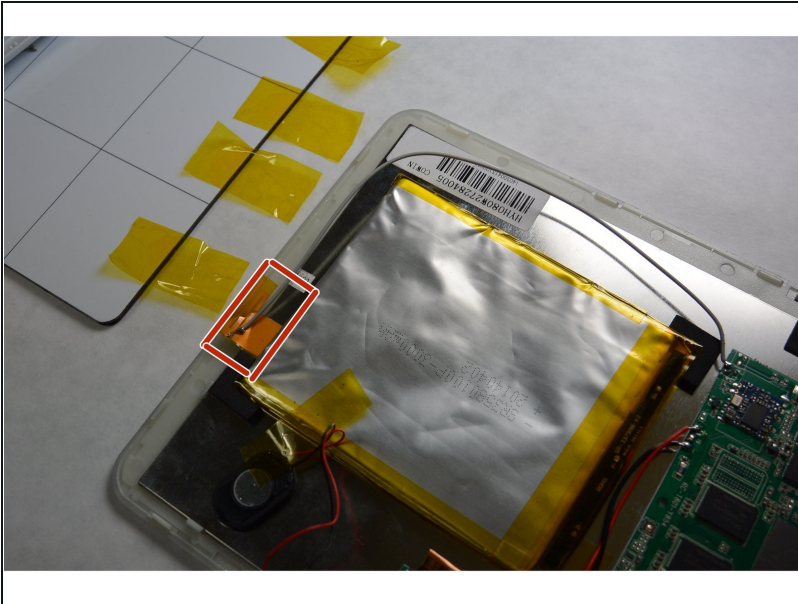
- Place the tablet down so that the screen is facing away from you.
- Insert the tip of your opening tool into the small gap between the gray and white plastic covering. Pry it open and you should hear the clips opening up.
- Gently work your way around the perimeter of the tablet's edge.

Step 3



- Remove the back cover
- Remove any tape on the speaker and detach the speaker from the back plate.
 - ☑ The speaker is connected to the motherboard by two soldered wires. Don't break them when you remove the speaker.

Step 4 — Motherboard



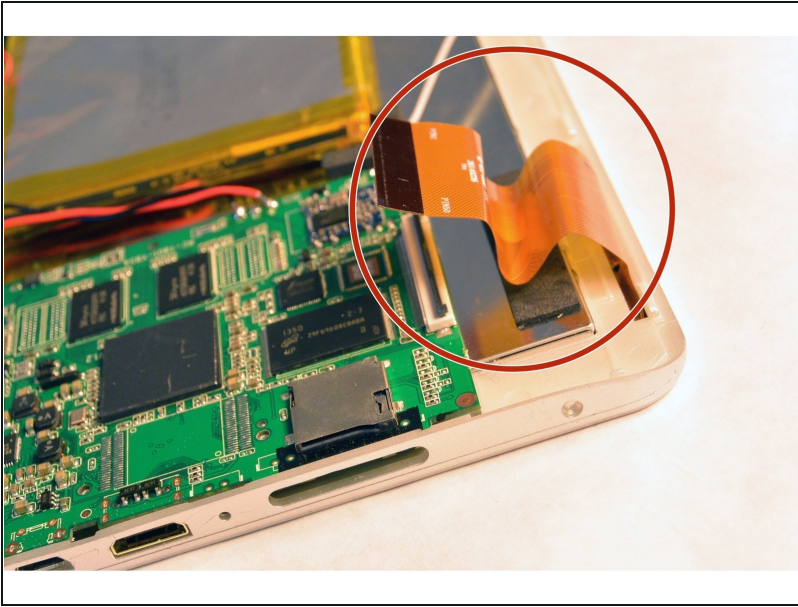
- Disconnect the Wi-Fi antenna cable from the motherboard.

Step 5



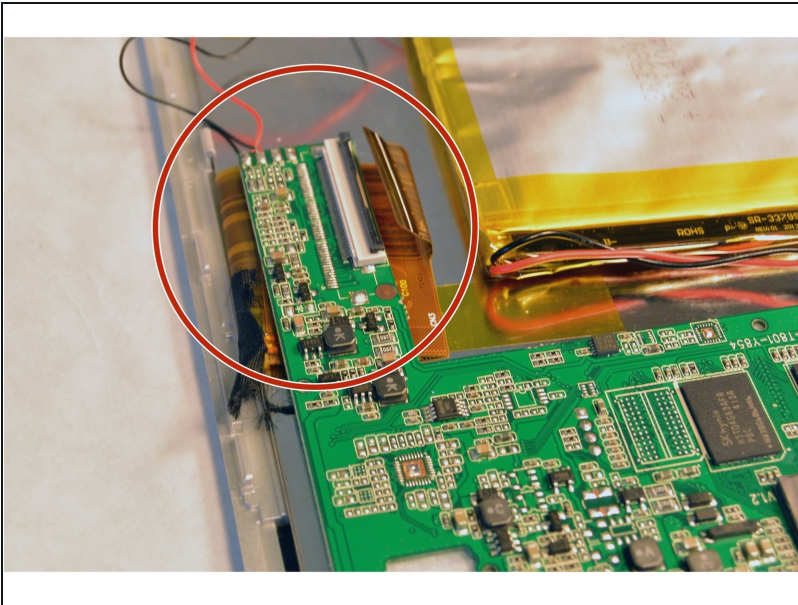
- Using the Phillips #1 screwdriver, remove the three screws from the motherboard..

Step 6



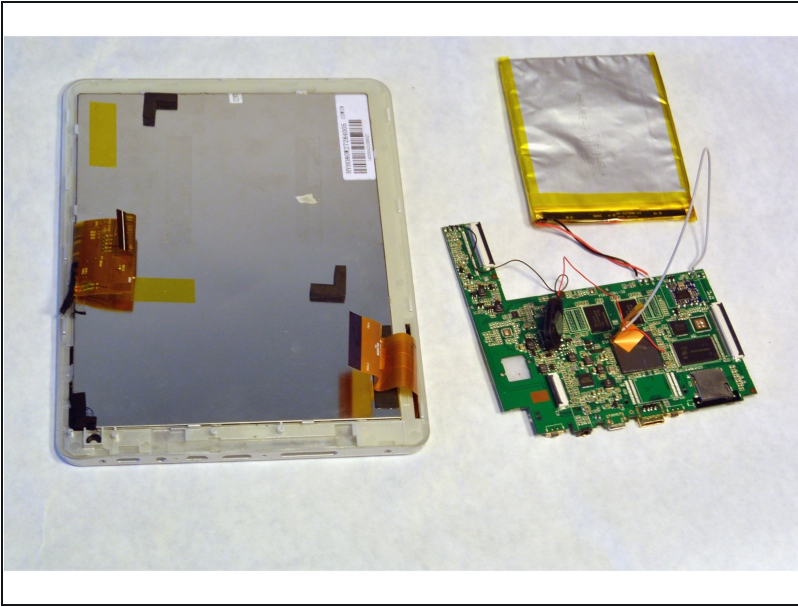
- Open the ZIF connector. Then, remove the ribbon that connects the motherboard and the screen.

Step 7



- Disconnect the other ZIF connector on the opposite side of the motherboard.

Step 8



- Remove the motherboard and now reinsert all connectors into a new motherboard.

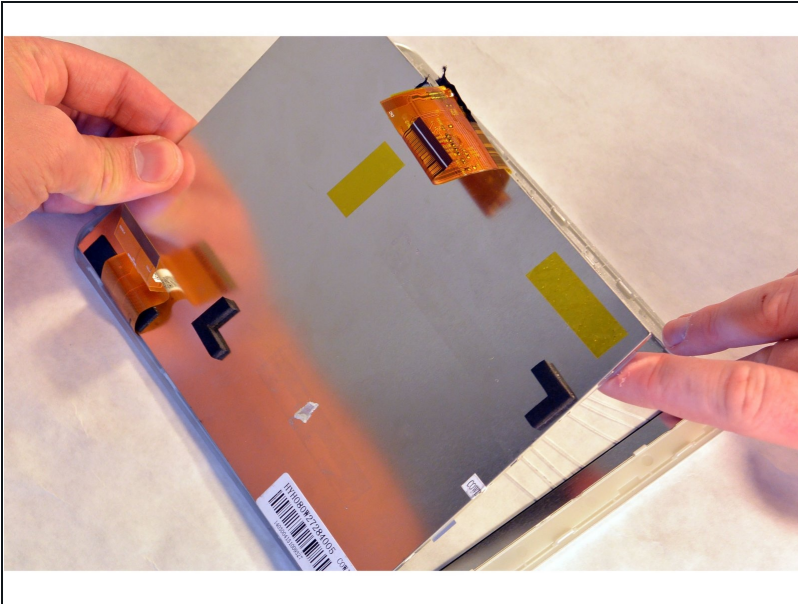
⚠ In order to disconnect the battery and speaker wires from the motherboard, soldering is required. Be cautious as the soldering iron is hot.

Step 9 — LCD Screen



- Use an opening tool to detach the clip between the front frame, and the metal loader.
- ⓘ There are several clips on each side of the frame. Detach ALL of them before you open the loader.

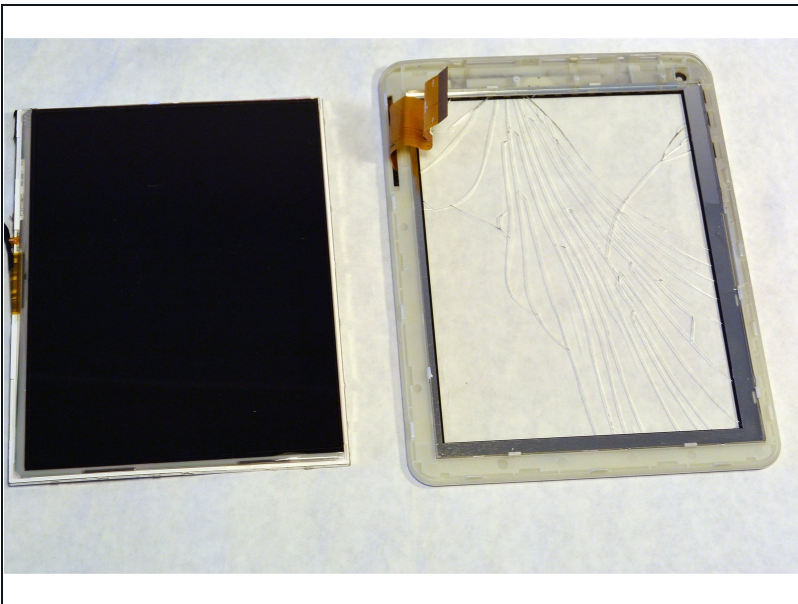
Step 10



- Lift the metal loader up and separate it from the LCD screen.

⚠ Detach each piece slowly to avoid damaging or dropping any fragile parts.

Step 11 — Digitizer Touch Screen



- Separate the display from the digitizer.

To reassemble your device, follow these instructions in reverse order.