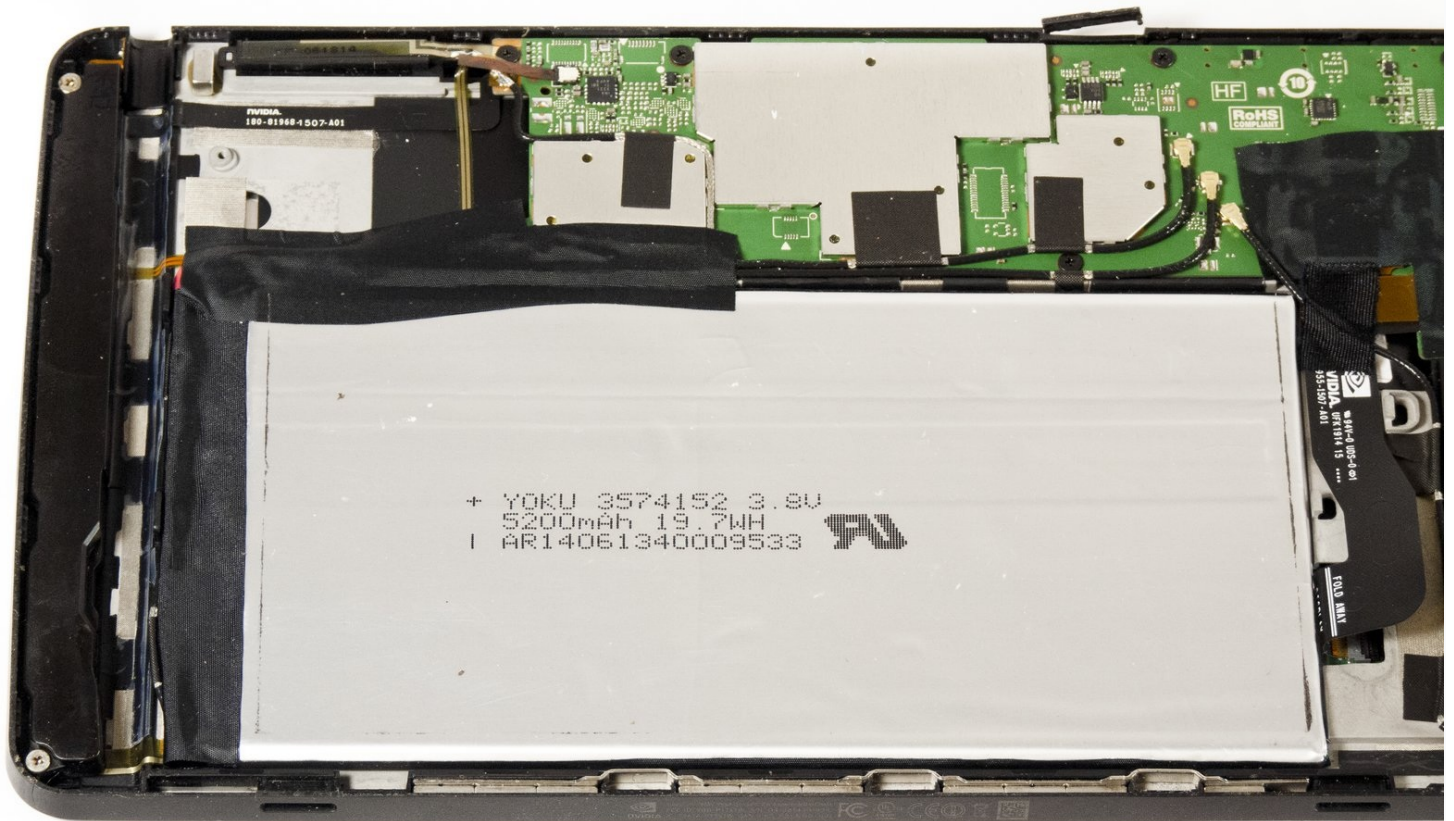




# Nvidia Shield Tablet Battery Replacement

The battery of the Nvidia Shield Tablet has...

Written By: Molly Bauer



# INTRODUCTION

The battery of the Nvidia Shield Tablet has been the source of many malfunctioning devices. In fact, the battery has required a recall from Nvidia because of overheating issues. A recall will simply deliver a new tablet to your door; however, if you follow our guide, you can replace your overheated or bad battery right at home.

---

## TOOLS:

[Anti-Static Wrist Strap](#) (1)

[Spudger](#) (1)

[iFixit Opening Tool](#) (1)

[Soldering Iron 60w Hakko 503F](#) (1)

---

## Step 1 — Rear Case



- First, remove the stylus from your tablet.

## Step 2



- Set the tablet so the buttons, microSD, and stylus port are facing you.
  - Open the microSD slot.
  - Using the flat end of the spudger tool, carefully pry open the case starting from the microSD slot, slowly sliding the spudger along the inside edge of the case.
- ⚠ You may want to put on your [anti-static wrist strap](#) at this point as the motherboard will be vulnerable to physical touch and electrostatic shock after the casing is removed.

## Step 3



- As you remove your case, be aware of small clips along the edges.
- Finally, set the old casing aside.



## Step 4 — Battery



- Make sure to rotate your tablet so the large silver battery is closest to you.
- Using the large plastic opening tool, slowly remove the tape surrounding the battery.

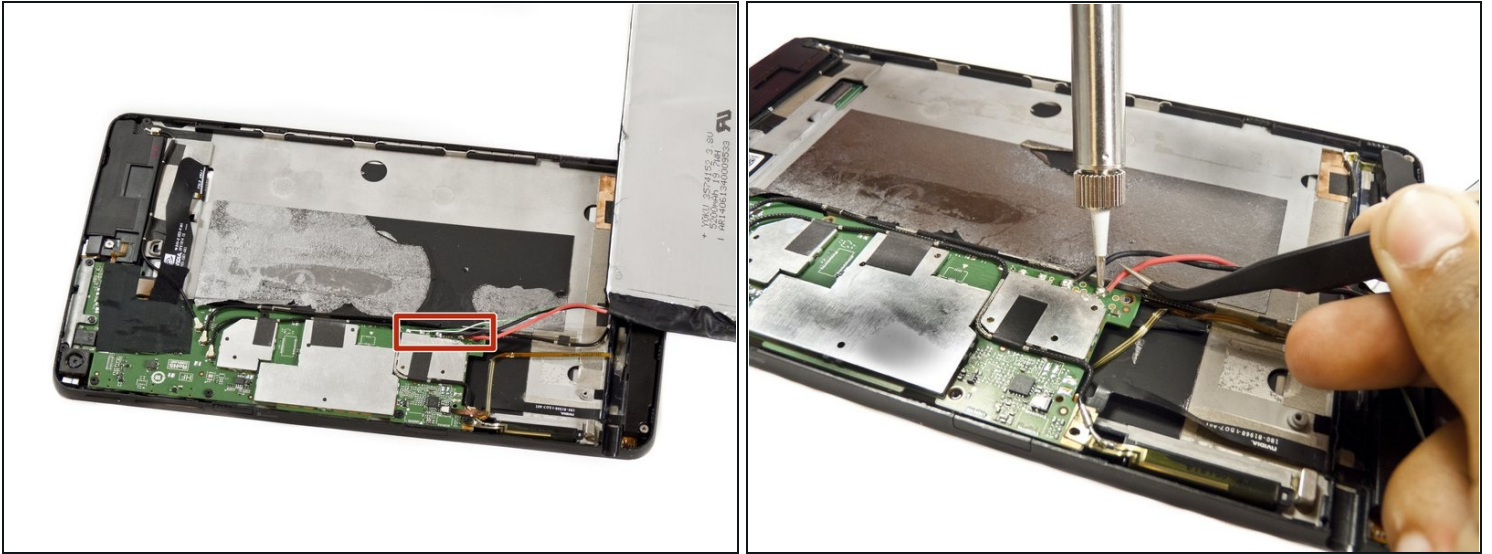
⚠ When removing the battery, be sure to use your [anti-static wrist strap](#).

## Step 5



- Wedge the large plastic opening tool under the battery.
- Slowly continue lifting the battery using the plastic opening tool around the perimeter of the battery until the battery is completely separated from the tablet.

## Step 6



- Desolder the four battery wires (red, black, green, and white) from the motherboard.
  - ☑ Make sure to note which wire goes where, you don't want to re-solder the wires backwards!
- The battery should now come free from the device.

---

To reassemble your device, follow these instructions in reverse order.