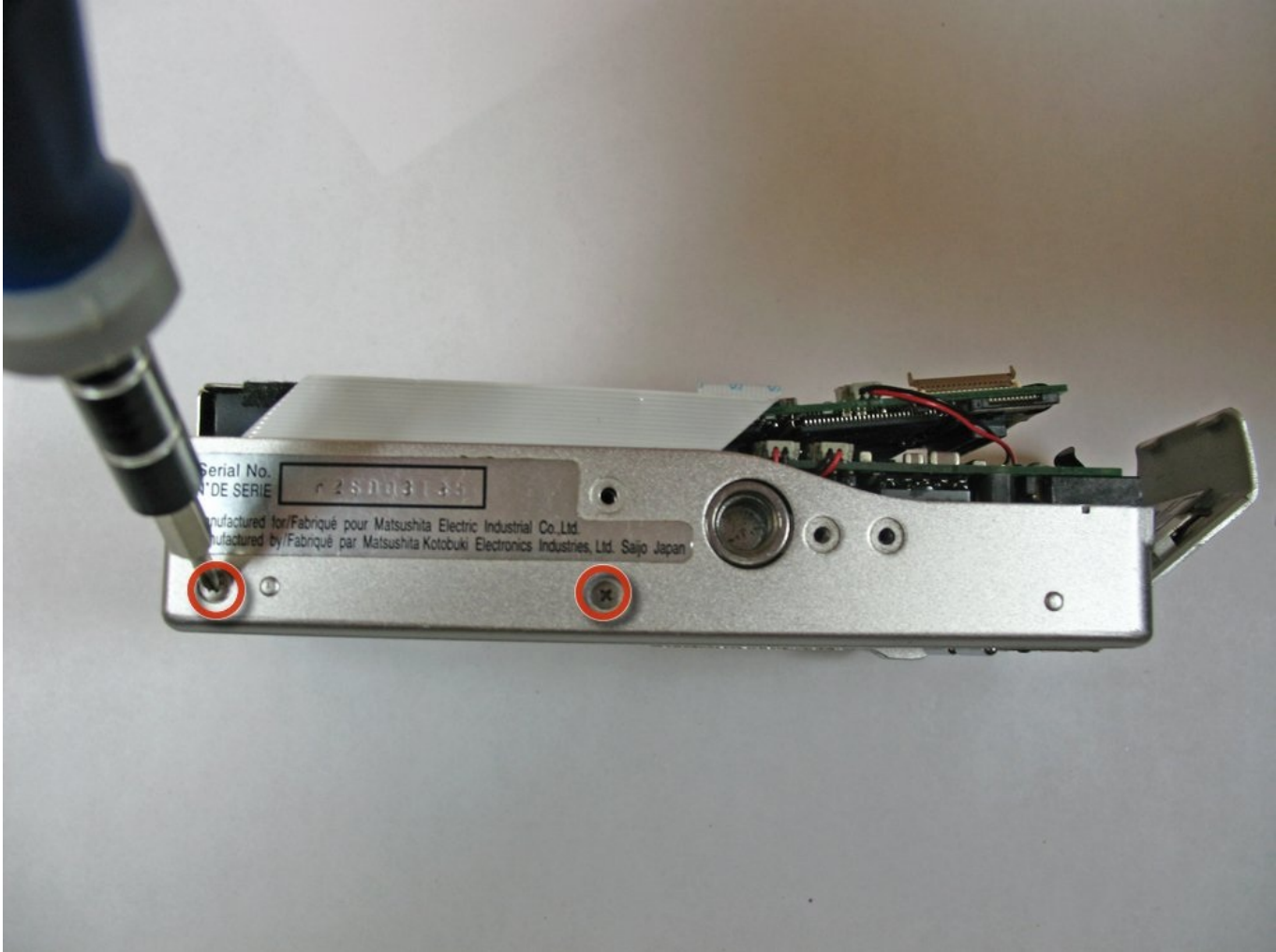




Panasonic Lumix DMC-F7 Front Case Replacement

Replacing the front case of your camera.

Written By: Alex Penman



INTRODUCTION

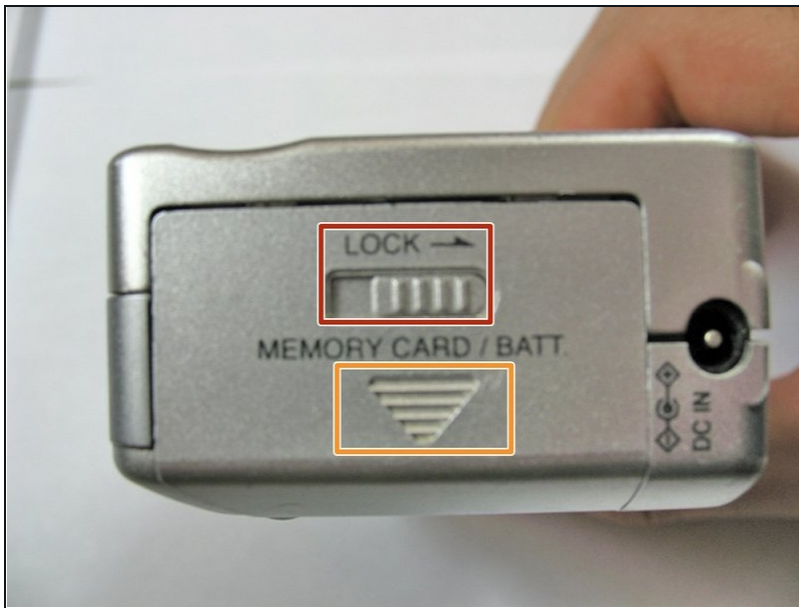
Replacing the front case of your camera.

TOOLS:

Phillips #00 Screwdriver (1)

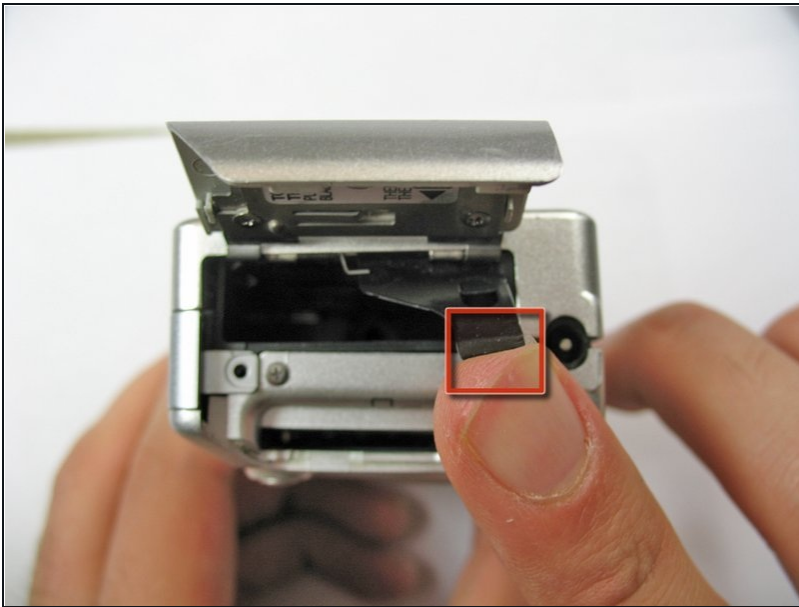
Spudger (1)

Step 1 — Battery



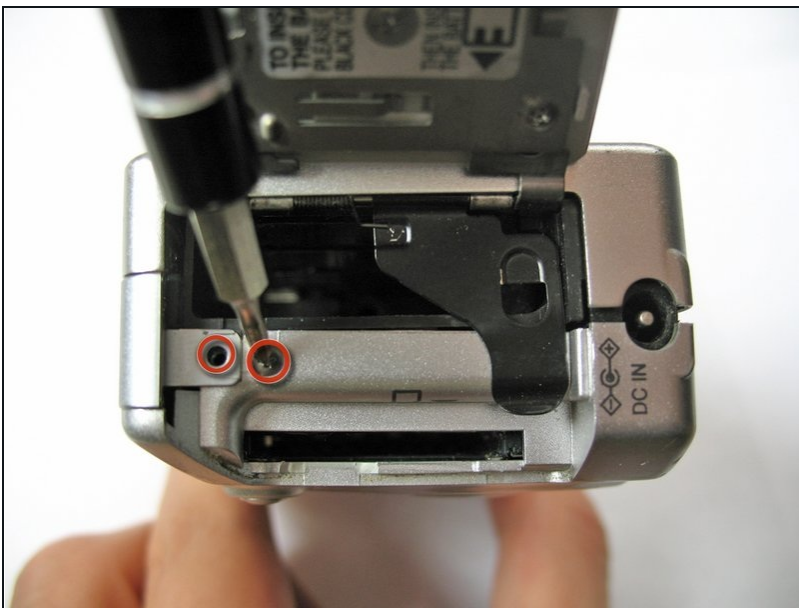
- Slide the lock switch to the right so that it is in the unlocked position.
 - Use your finger to slide the battery hatch in the direction of the downward arrow so that the hatch is open.
- ⓘ Both battery and memory card should now be visible.

Step 2



- Open the battery hatch and then the black cover to expose the battery compartment.
- ⓘ The camera used to create these repair guides did not have a battery and memory card.
- Remove the battery.
- ★ When installing the new battery, ensure it is in the same orientation as before.

Step 3 — Back Case



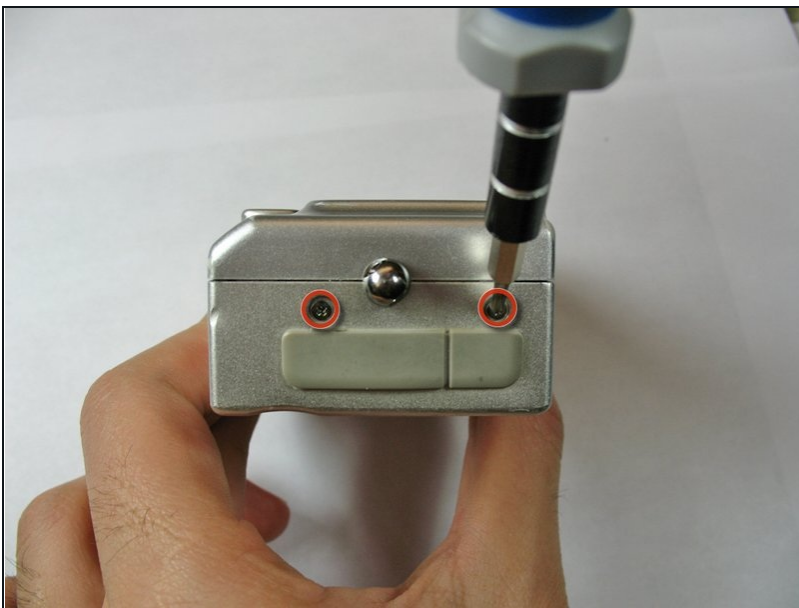
- Using the Phillips #00 screwdriver, remove the two 2.8 mm screws located under the hatch.

Step 4



- Use the Phillips #00 screwdriver to remove the three 2.8 mm screws on the bottom of the camera.

Step 5



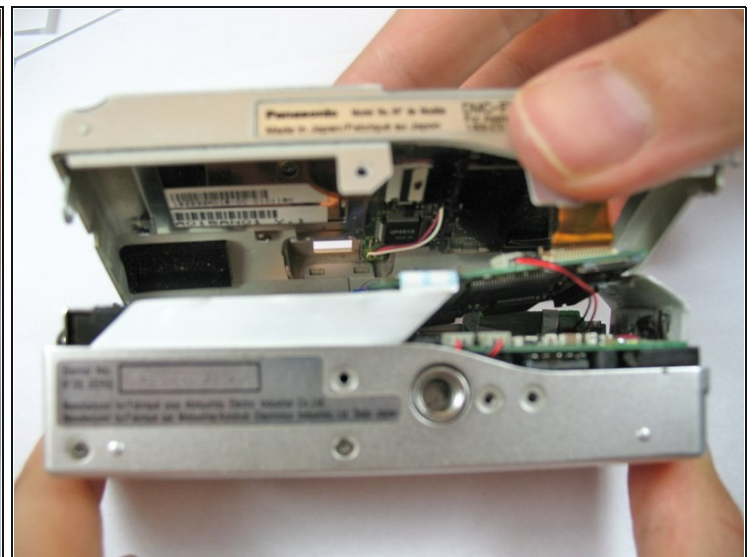
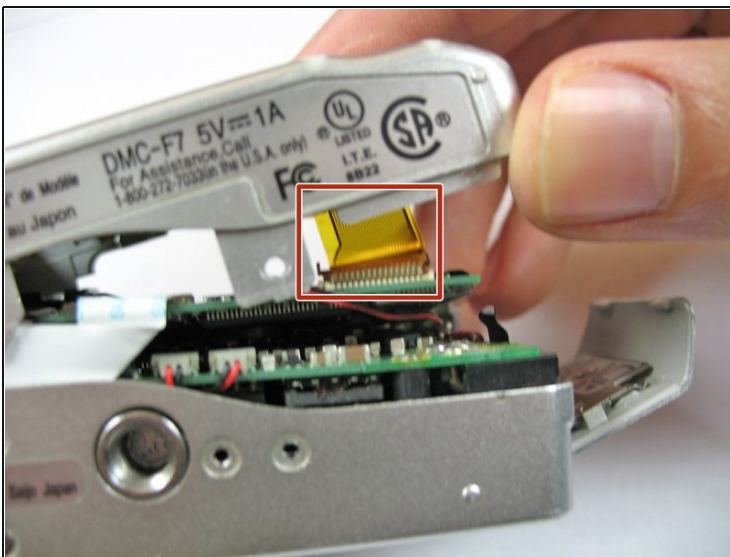
- Use the Phillips #00 screwdriver to remove the two 2.8 mm screws on the side of the camera.

Step 6



- Use a spudger to pry open the case at all sides.

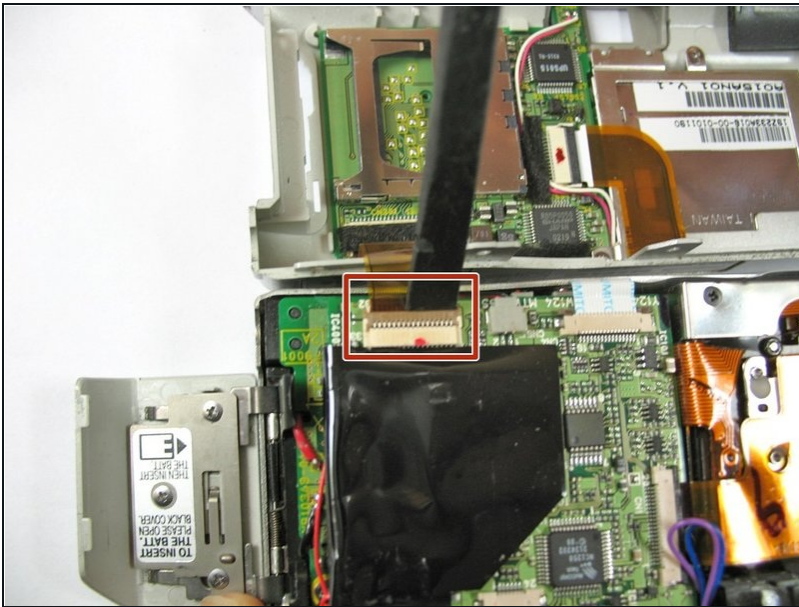
Step 7



⚠ Be careful not to damage the ribbon cable when opening. Ensure it is still attached.

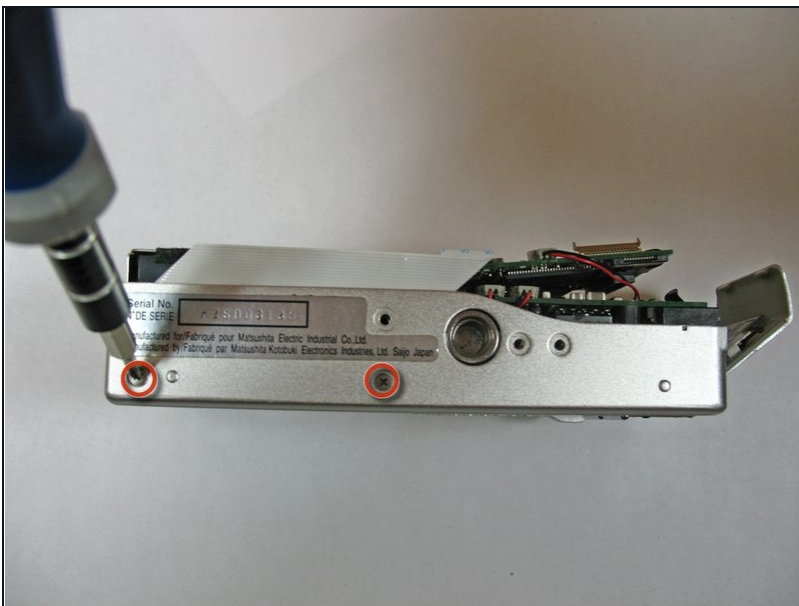
- Use your fingers to carefully remove the back casing from the front of the camera.

Step 8



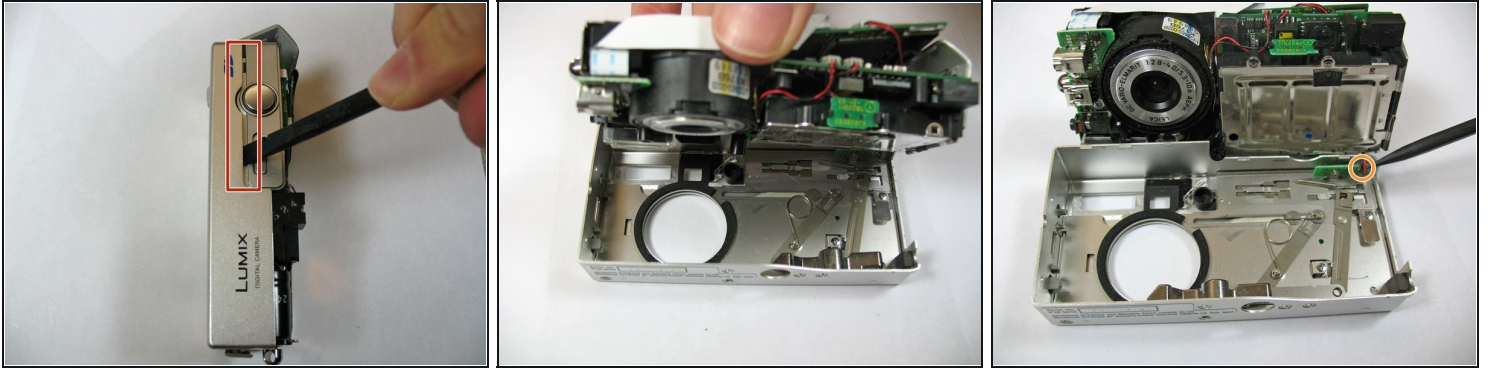
- Place the camera on a flat surface with the front side facing down.
- Use the spudger to flip up the retaining flap and slide the ribbon cable out of the connector.
- Hold down on the camera's metal casing with one hand. Using your other hand, remove the back case from the rest of the camera.

Step 9 — Front Case



- Remove the last two 2.8 mm Phillips #00 screws from the bottom of the camera.

Step 10



- Using the spudger, pry the front case away from the camera's components.
- Use your fingers to carefully pull the back case from the front case.
- Cut the black and red wires connecting front case to the body of the camera.

⚠ Be careful to ensure that internal materials won't be caught.

- Separate the front of the case from the camera.

☑ To reinstall the front case, solder the wires of the new case to the components of the camera.

To reassemble your device, follow these instructions in reverse order.