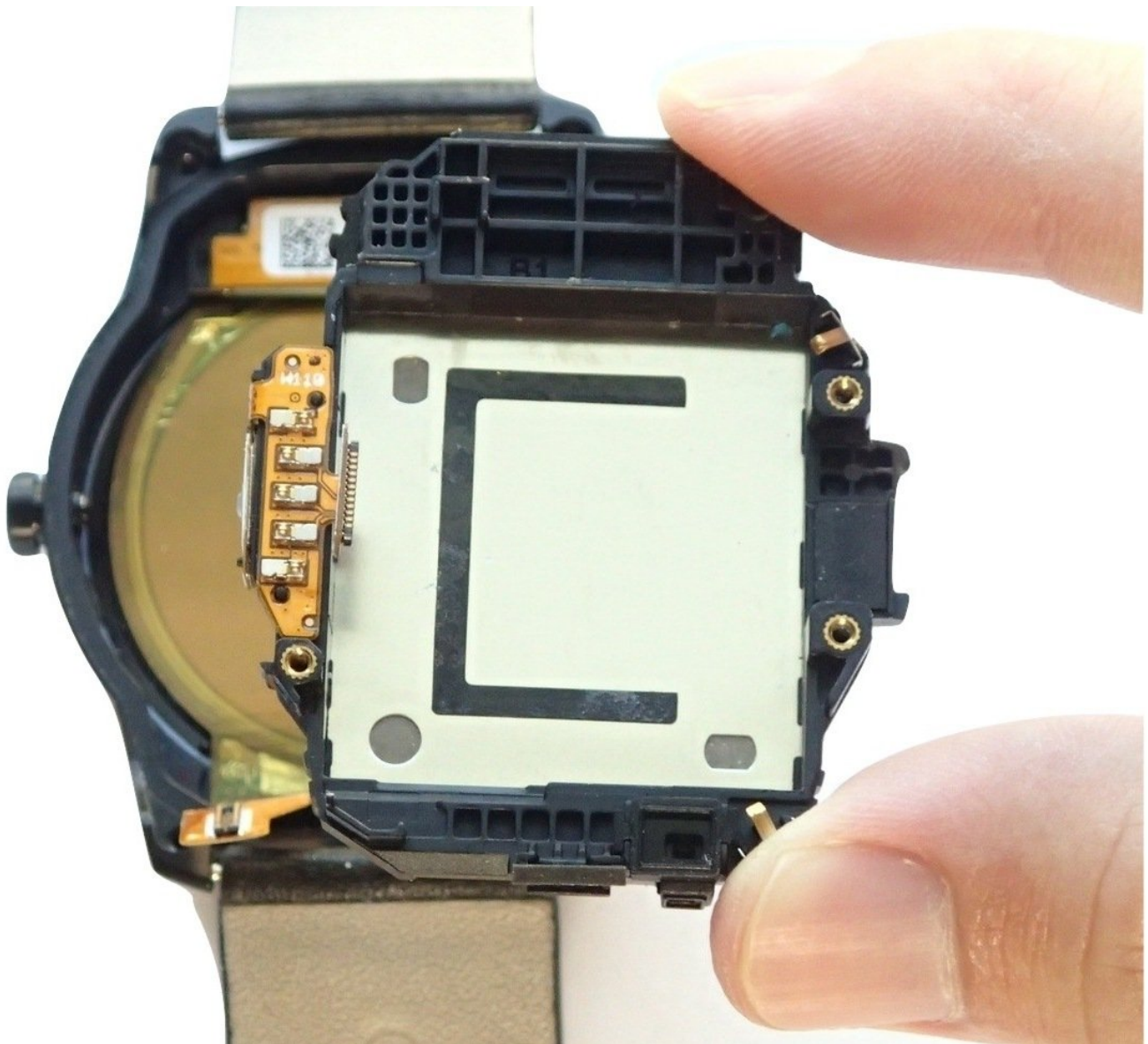




# LG G Watch R Battery Housing

The battery housing holds all off the internal components firmly in place.

Written By: Westley Courchene



---

## INTRODUCTION

This guide will show you how to remove the battery housing for the LG G Watch R.




### TOOLS:

- [Spudger](#) (1)
-

## Step 1 — Back Case



 Power off your watch before disassembling it.

- Place the watch upside down on a hard surface so that its back case is facing upright.
- Use a T4 Torx Star screwdriver to remove the four 4.0 mm Torx screws from the corners of the back case.

## Step 2



- Use a plastic opening tool to pry open the back case from both sides of the watch.

## Step 3



- Remove the back case.

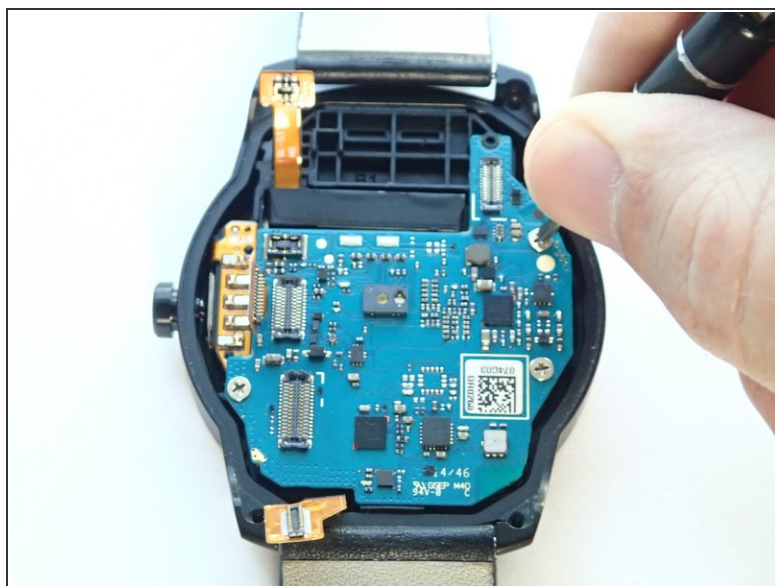
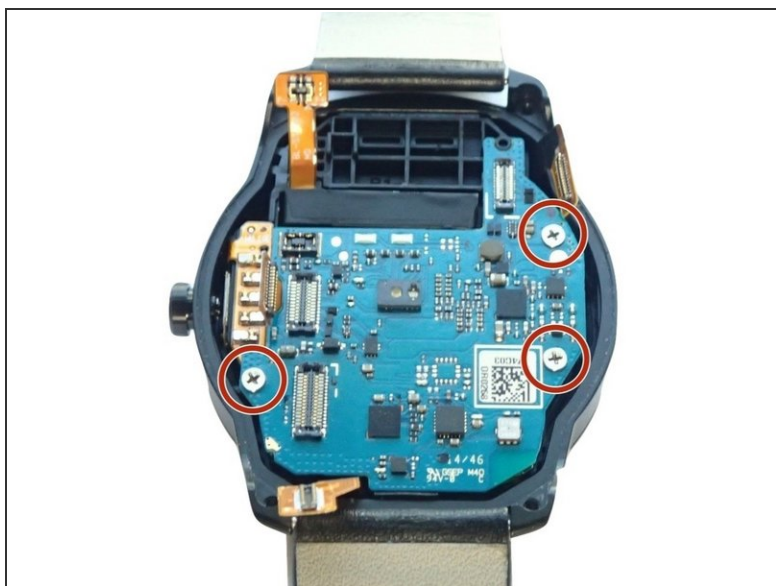
## Step 4 — Motherboard



- With a plastic opening tool, disconnect the four connectors on the top of the motherboard.

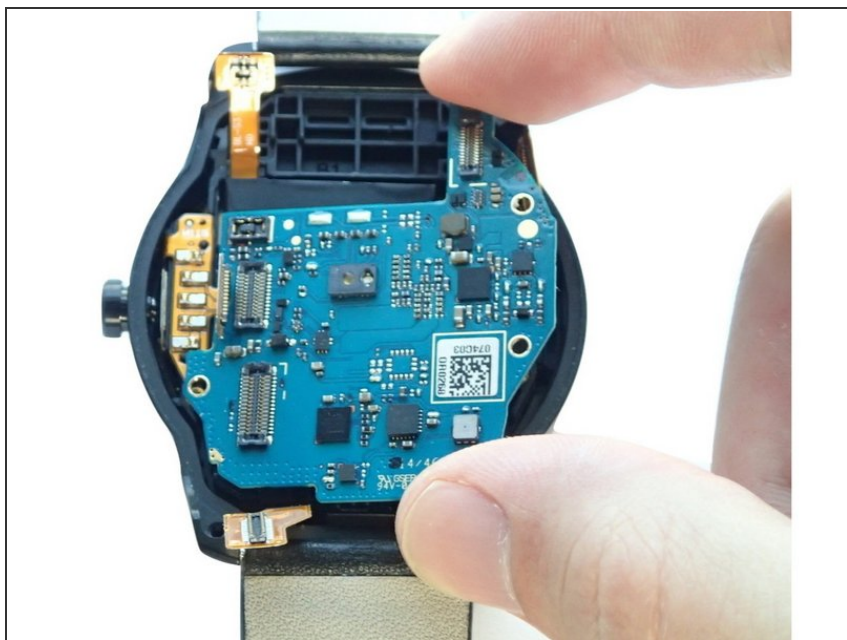


## Step 5



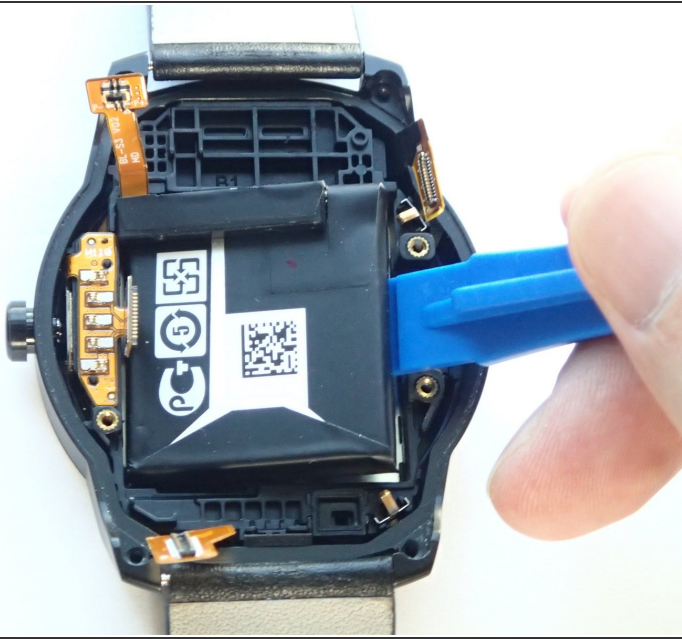
- Remove three 3.0 mm Phillips screws on the edges of the motherboard with a Phillips #000 screwdriver.

## Step 6



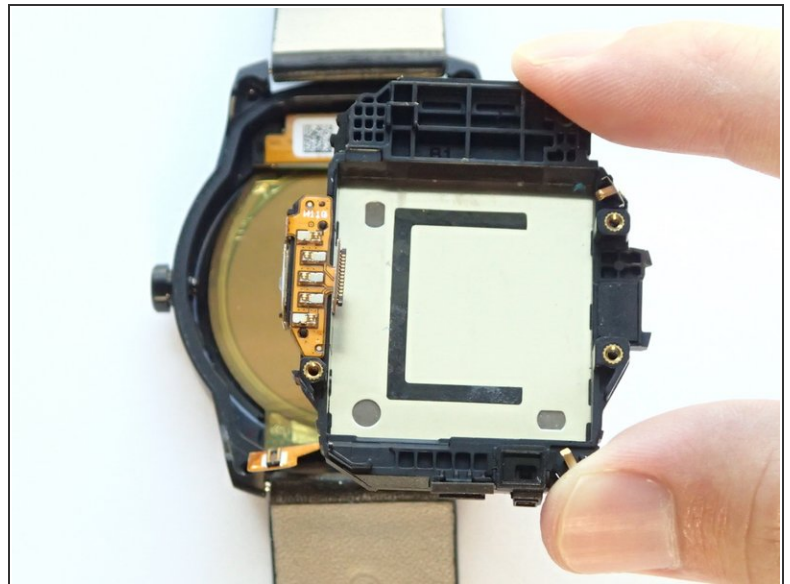
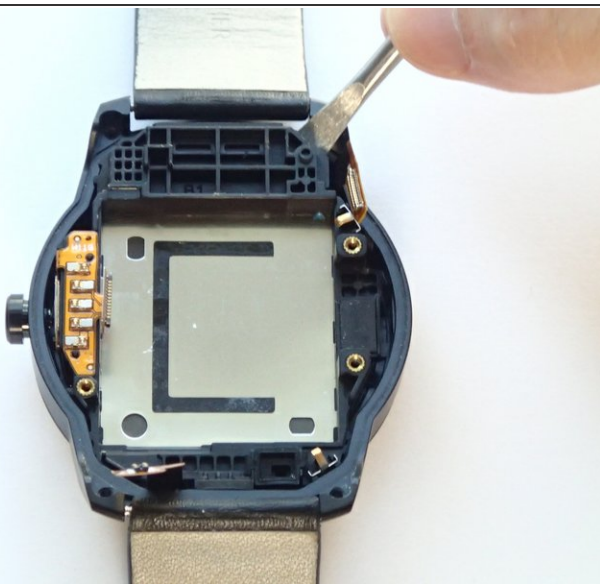
- Grasp the edges of the motherboard and slide it slightly towards the right to remove it from its case.

## Step 7 — Battery Replacement



- Use a plastic opening tool to pry the battery out of the device.
- ⓘ You may need to use a stronger prying force due to the adhesive that secures the battery to the case.

## Step 8 — Battery Housing Replacement



- Pry the battery housing from the top right corner using a spudger.
- Once loosened, remove the battery housing.

To reassemble your device, follow these instructions in reverse order.