



# LG G Watch R Power Button

Removing the power button might be useful when...

Written By: Westley Courchene



# INTRODUCTION

Removing the power button might be useful when attempting to clean the device.

## TOOLS:

- Tweezers (1)
- PH000 Phillips Screwdriver (1)
- Phillips #000 Screwdriver (1)
- iFixit Opening Tool (1)
- Spudger (1)
- T5 Torx Screwdriver (1)

## Step 1 — Back Case



 Power off your watch before disassembling it.

- Place the watch upside down on a hard surface so that its back case is facing upright.
- Use a T4 Torx Star screwdriver to remove the four 4.0 mm Torx screws from the corners of the back case.

## Step 2



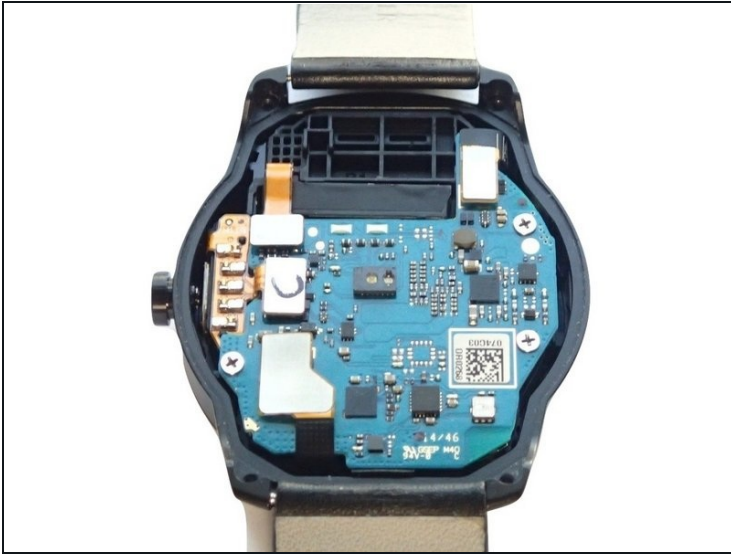
- Use a plastic opening tool to pry open the back case from both sides of the watch.

## Step 3



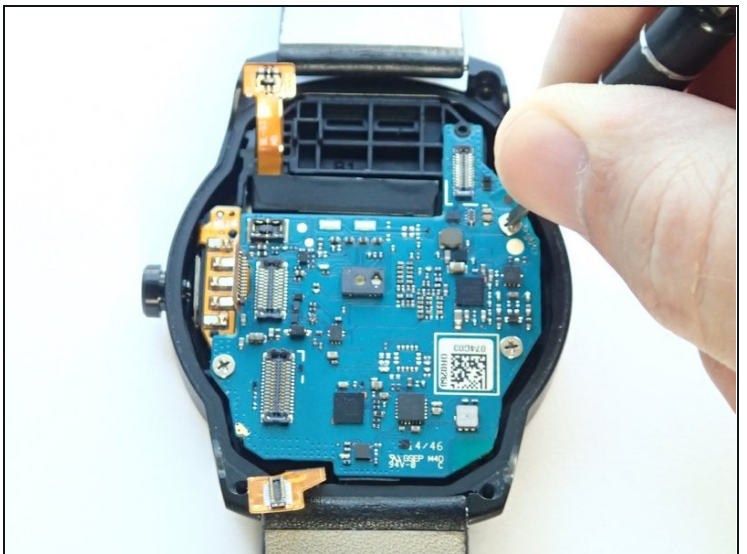
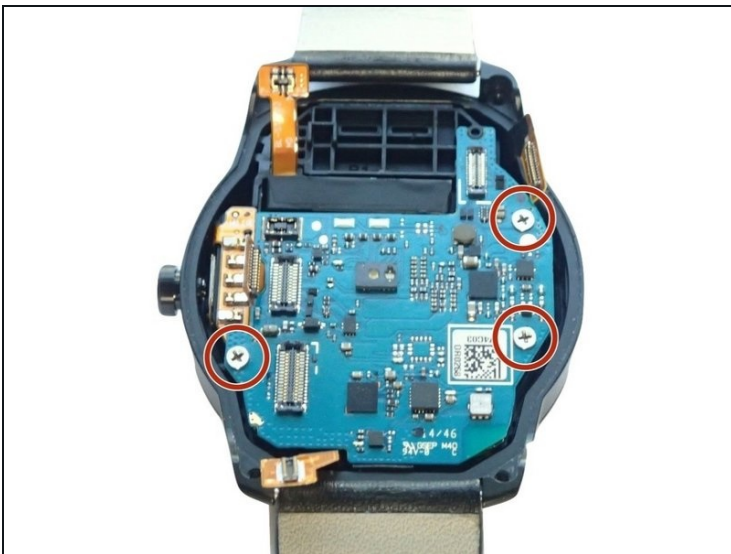
- Remove the back case.

## Step 4 — Motherboard



- With a plastic opening tool, disconnect the four connectors on the top of the motherboard.

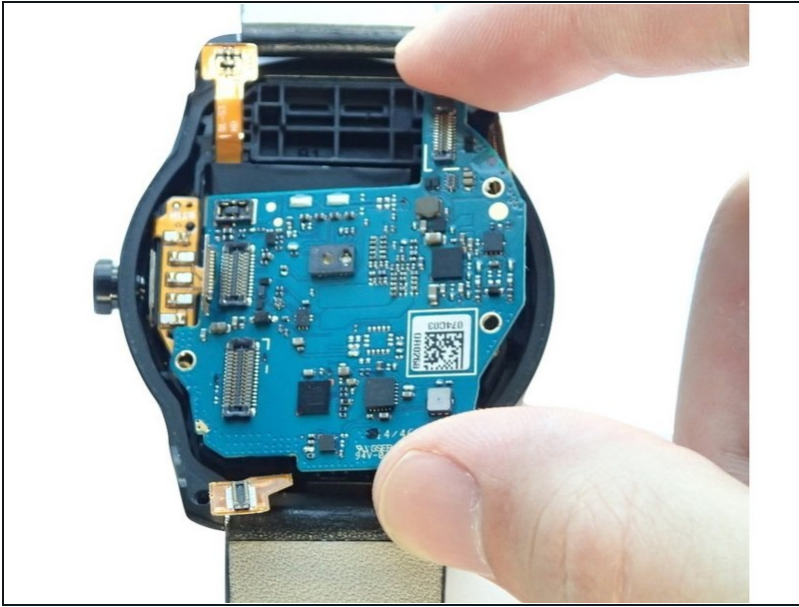
## Step 5



- Remove three 3.0 mm Phillips screws on the edges of the motherboard with a Phillips #000 screwdriver.

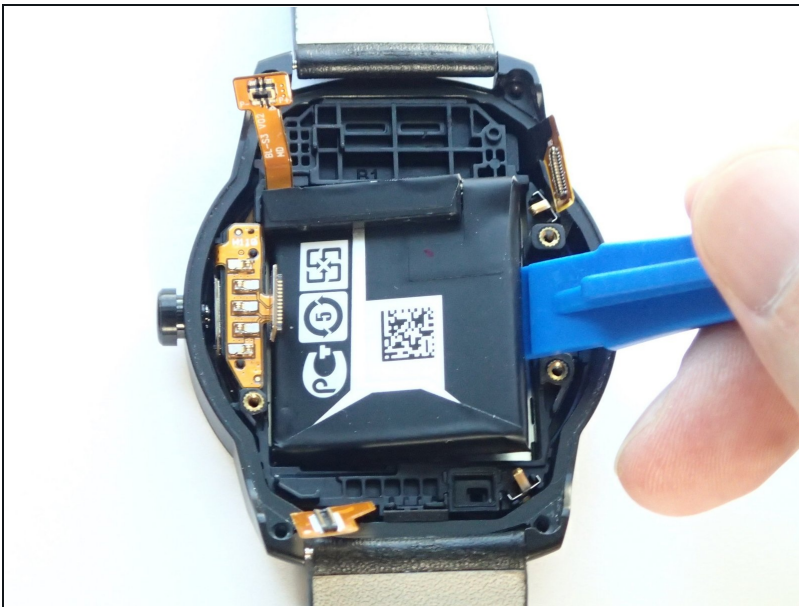



## Step 6



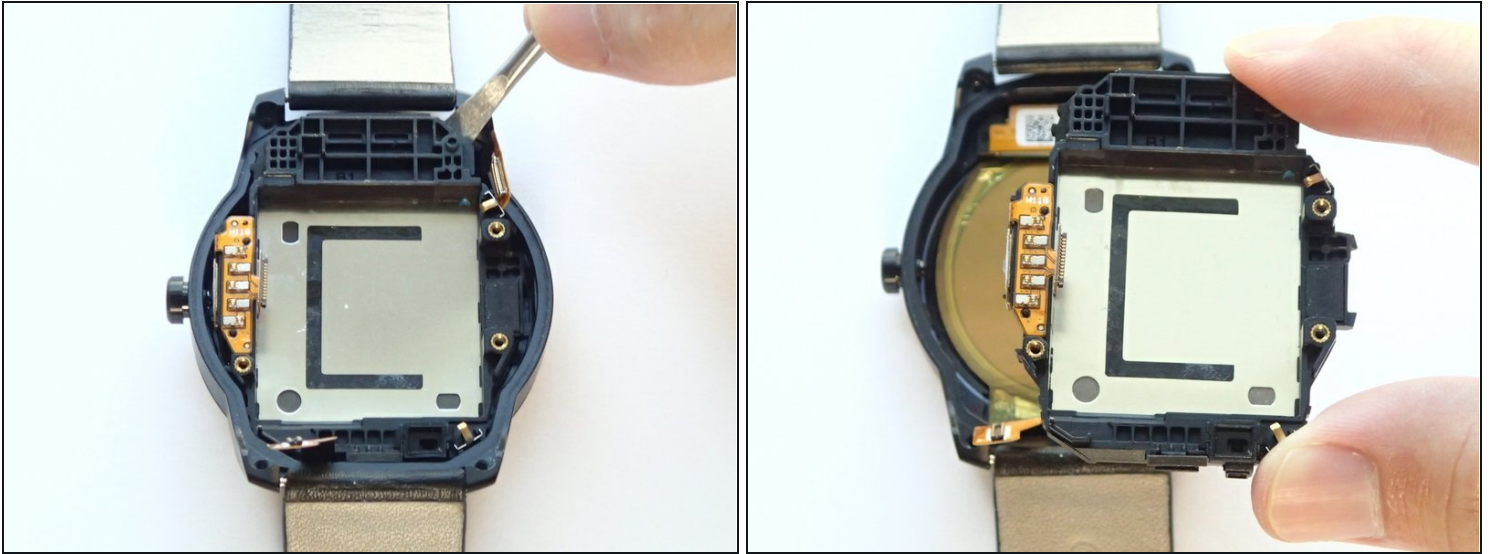
- Grasp the edges of the motherboard and slide it slightly towards the right to remove it from its case.

## Step 7 — Battery Replacement



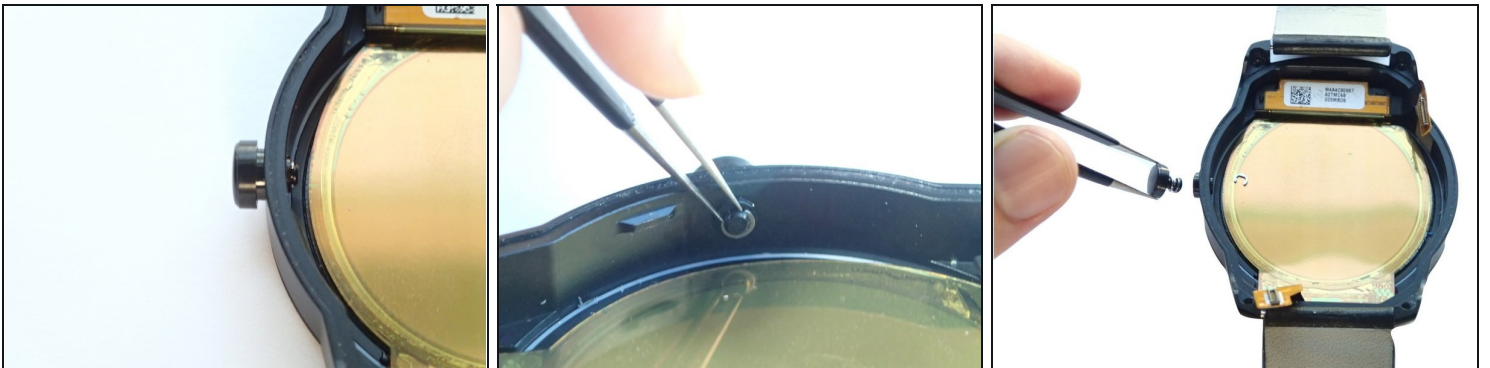
- Use a plastic opening tool to pry the battery out of the device.
-  You may need to use a stronger prying force due to the adhesive that secures the battery to the case.

## Step 8 — Battery Housing Replacement



- Pry the battery housing from the top right corner using a spudger.
- Once loosened, remove the battery housing.

## Step 9 — Power Button



- On the power button, locate a small grey washer on the interior side of the watch.
- Use a pair of [tweezers](#) or another pointed object to push the washer out of its socket, and remove the power button.

---

To reassemble your device, follow these instructions in reverse order.