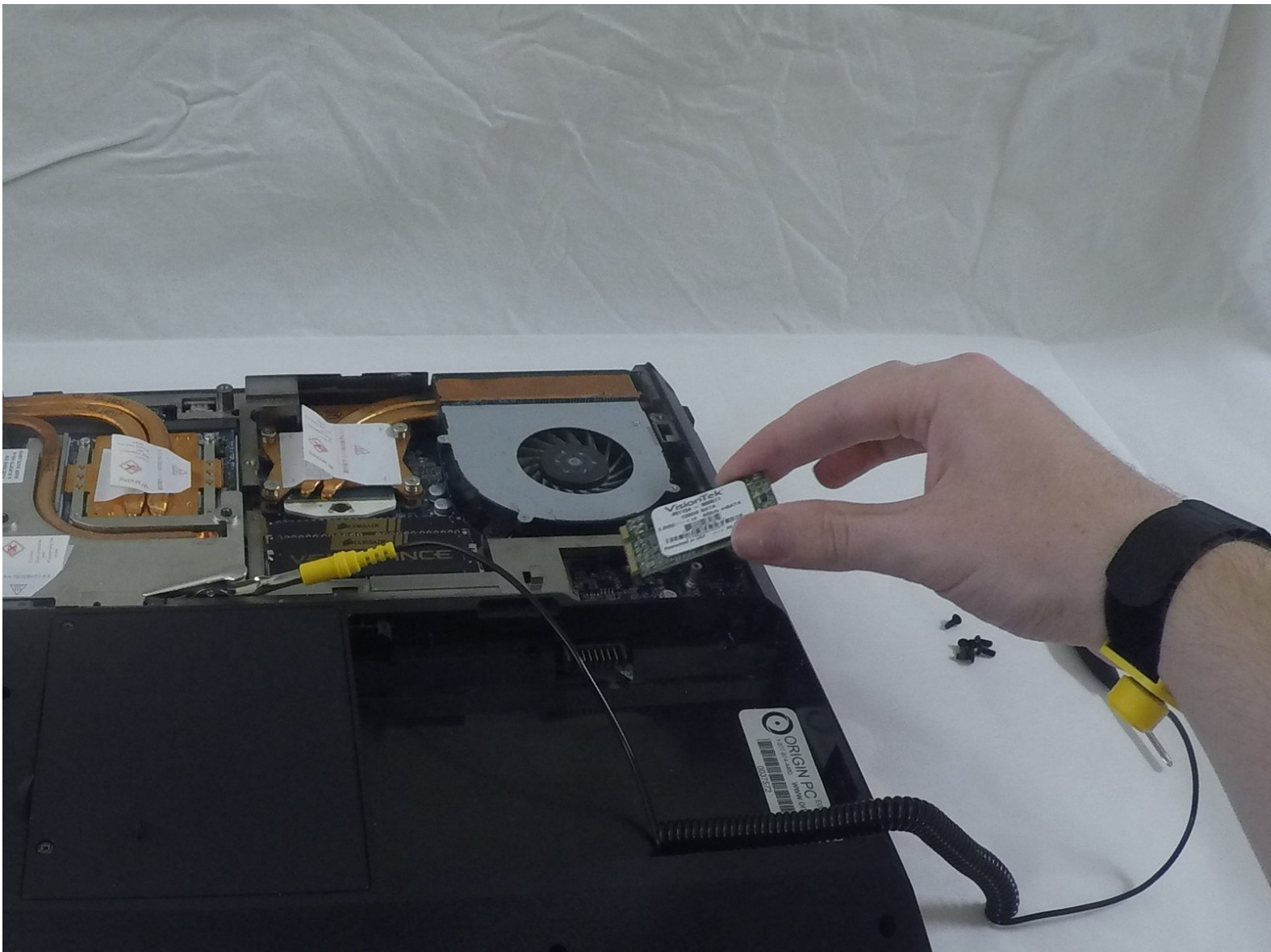




Origin EON17-S mSATA SSDs Replacement

How to remove the mSATA SSD from either bay in the Origin EON17-S 2013 model.

Written By: Caelan Langdon



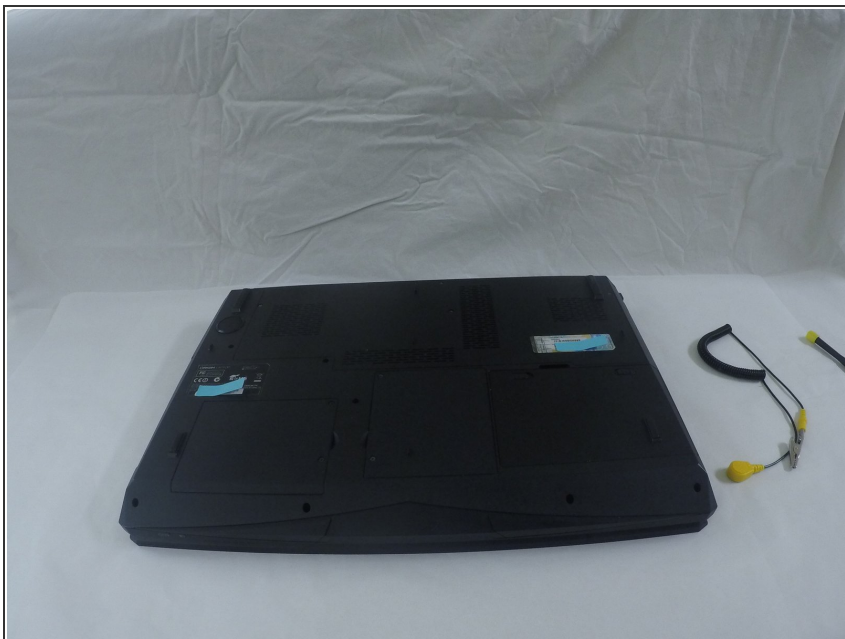
INTRODUCTION


This guide will show you how to access and remove the mSATA SSD from both locations in the Origin EON17-S.

TOOLS:

- [philips screwdriver 3/32"](#) (1)
 - [Anti-Static Wrist Strap](#) (1)
-

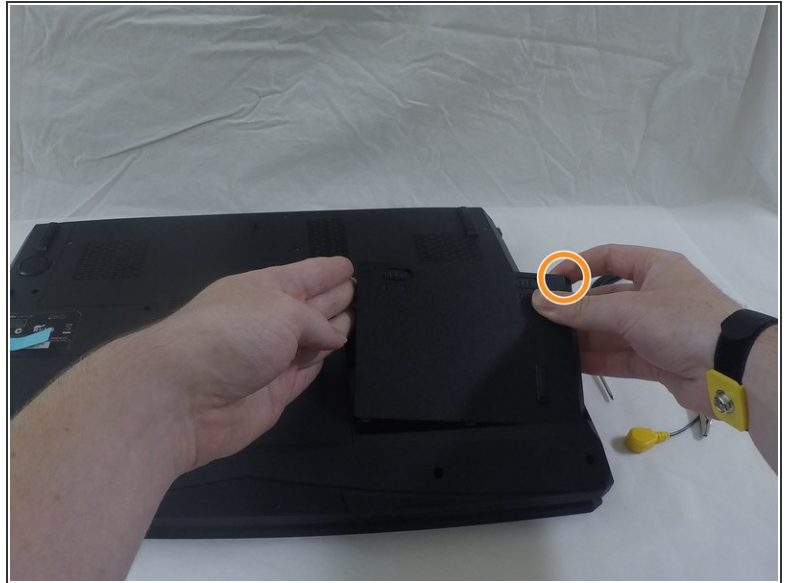
Step 1 — mSATA SSDs



 Opening your computer can be dangerous; give it at least 10 minutes to cool down after shutdown and ensure the power supply and battery are disconnected.

- Disconnect all peripherals.
- Disconnect the power cord.
- Lay the computer upside-down.


Step 2



- Push both locking tabs inward. One is spring loaded and will need to be held while removing the battery.
- Remove the battery by pulling up on the tab.
- ⓘ To replace the drive in mSATA bay 1, continue to Step 3.
- ⓘ To replace the drive in mSATA bay 2, proceed to Step 7.
- ⓘ If you are unsure which drive you are replacing, follow all of the remaining steps.

Step 3



 Performing the following actions incorrectly can damage your hard drive and could result in lost data. Consider backing up your hard drive(s) before proceeding.

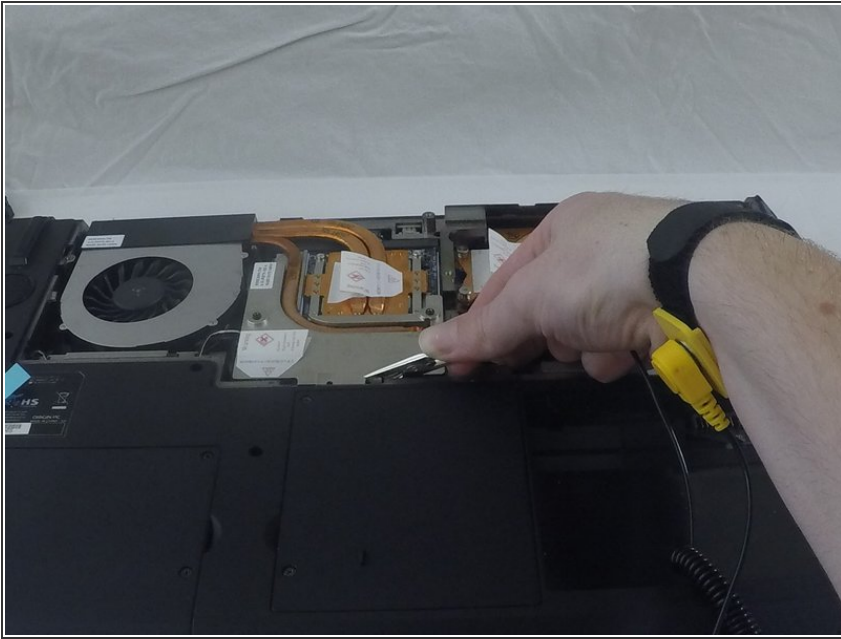
- Remove the component cover by removing the six screws with a 3/32" screwdriver.
 - Remove the screws from the bottom of the computer.
 - Remove the screws from the back of the computer.

Step 4



- Remove the cover by gently pulling back and up.

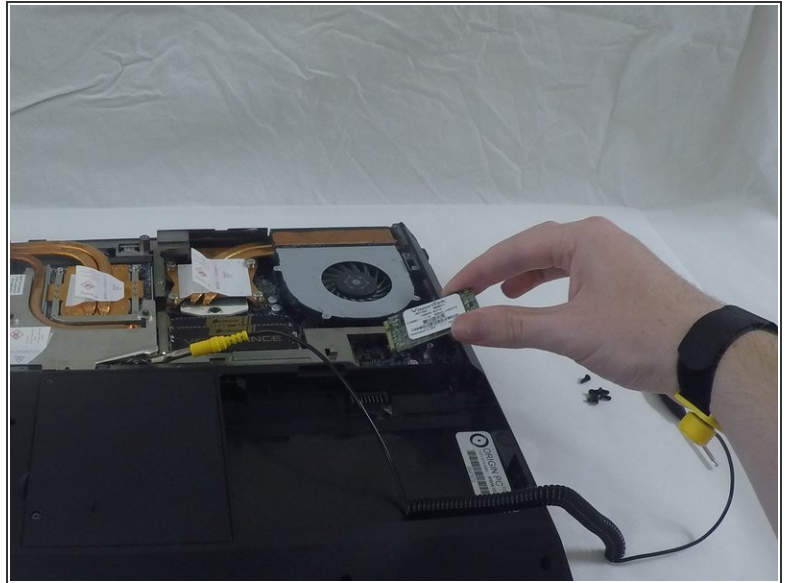
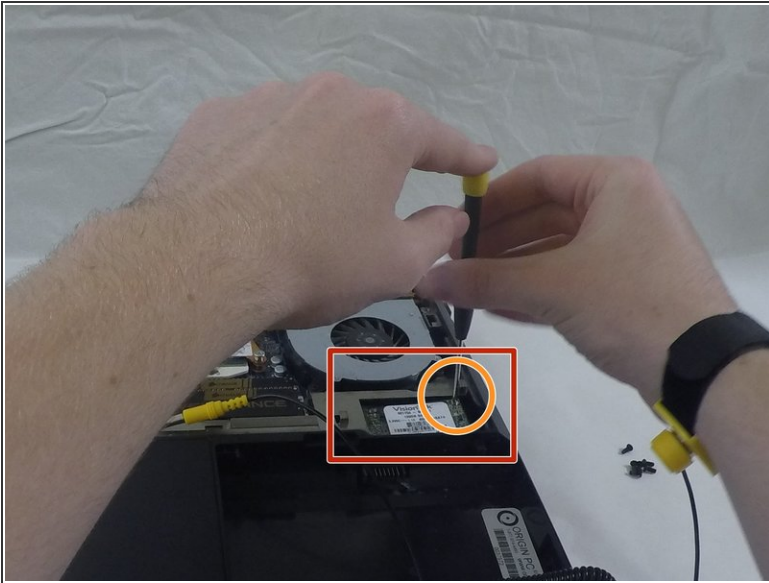
Step 5



⚠ An electrostatic discharge could damage your computer. Use an electrostatic wrist strap when working inside the computer.

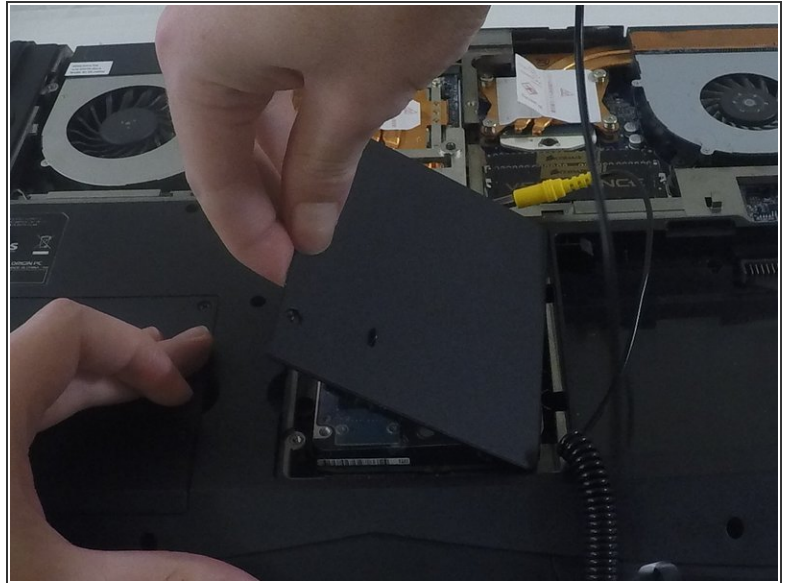
- Put on the electrostatic wrist strap and attach the alligator clip to a sturdy piece of metal inside the case.

Step 6



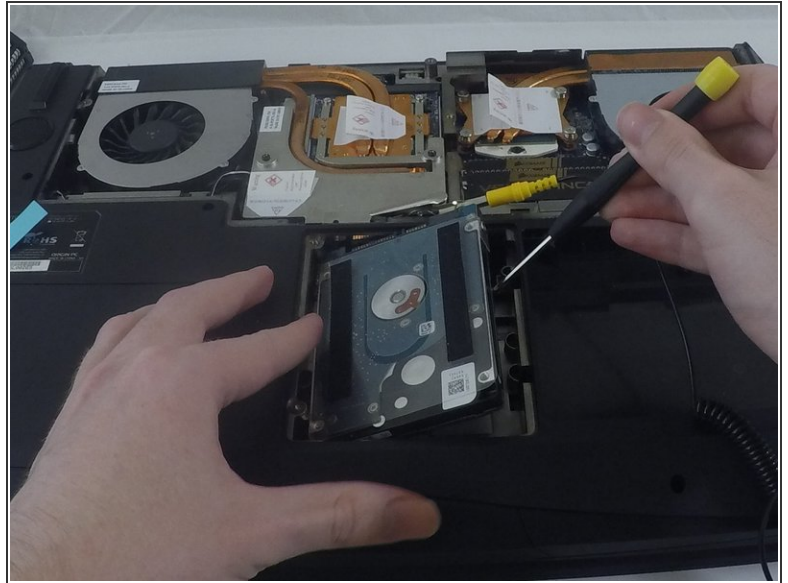
- You will see the mSATA drive in the lower right hand corner of the component area.
- Remove the screw on the far right side of the drive.
- The drive will rise up to an angle.
- Remove the drive by pulling in the direction the drive is positioned.

Step 7



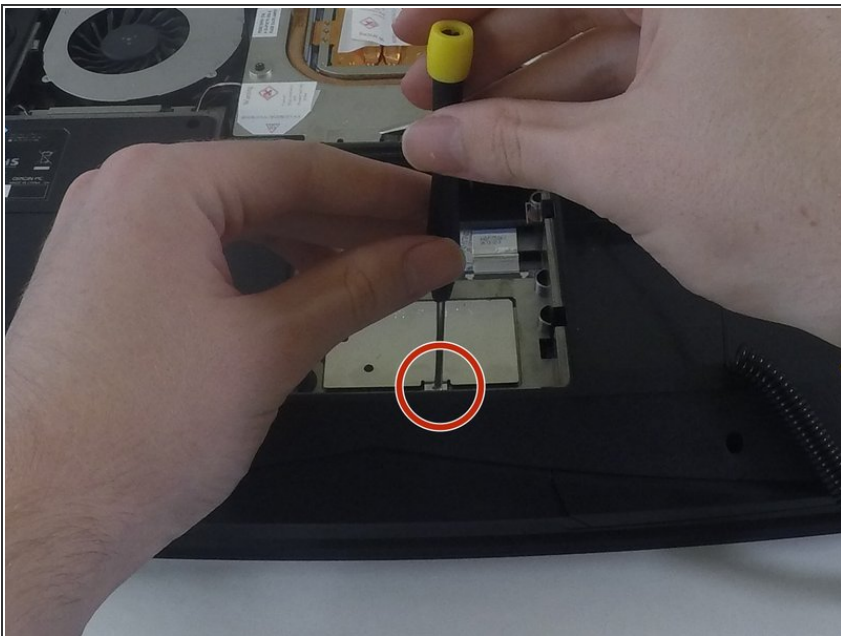
- Unscrew the two screws holding the hard drive cover to reveal the second mSATA bay.
- ⓘ There are two snaps on this cover, pull firmly but carefully to remove it without breaking them.

Step 8



- i** Removing the hard drive is necessary to get to the second mSATA bay.
- Remove the hard drive by sliding it towards you.
 - Once it is free of the port, use a screwdriver to **gently** pry it from the bay.

Step 9



- Remove the small, silver, rectangular plate below the hard drive bay.
- Remove the small screw at the front of the plate.
- Pull the plate up and out.

Step 10



- Remove the small screw on the upper left of the hard drive.
- The drive will rise up at an angle.
- Remove the drive by pulling in the direction the drive is currently positioned.

To reassemble your device, do anything you did in reverse.