



# How to Repair the Rear Cup Holder in a 2005-2013 Nissan Frontier

Learn how to repair the broken rear cup holder in a 2005-2013 Nissan Frontier.

Written By: Brian Leveille



---

## INTRODUCTION

Is there a broken rear cup holder in your 2005-2013 Nissan Frontier? Use this guide to learn about the steps involved with repairing this broken rear cup holder.



### TOOLS:

- [Super Glue](#) (1)
-

## Step 1 — How to Repair the Rear Cup Holder in a 2005-2013 Nissan Frontier



- Slide the front seat forward by raising the lever located on the front of the seat, near the console, and sliding the seat forward.
- Do this for both front seats.

## Step 2



- After sliding the front seats forward, you need to fold them forward as well.
- Push up on the lever located on the side of the front seat. Hold the lever up until the seat folds forward.
- Do this for both front seats.

### Step 3



- Fold up the back seat by using one hand to raise the lever on the side of the seat and the other hand to fold the seat back until it locks in place.
- Do this for both back seats.

### Step 4



- Make sure the broken rear cup holder is open enough to fit your hand inside.
- Remove the rear cup holder by using both hands to press in and up on the cup holder itself.
- The cup holder should "pop" out of the console.

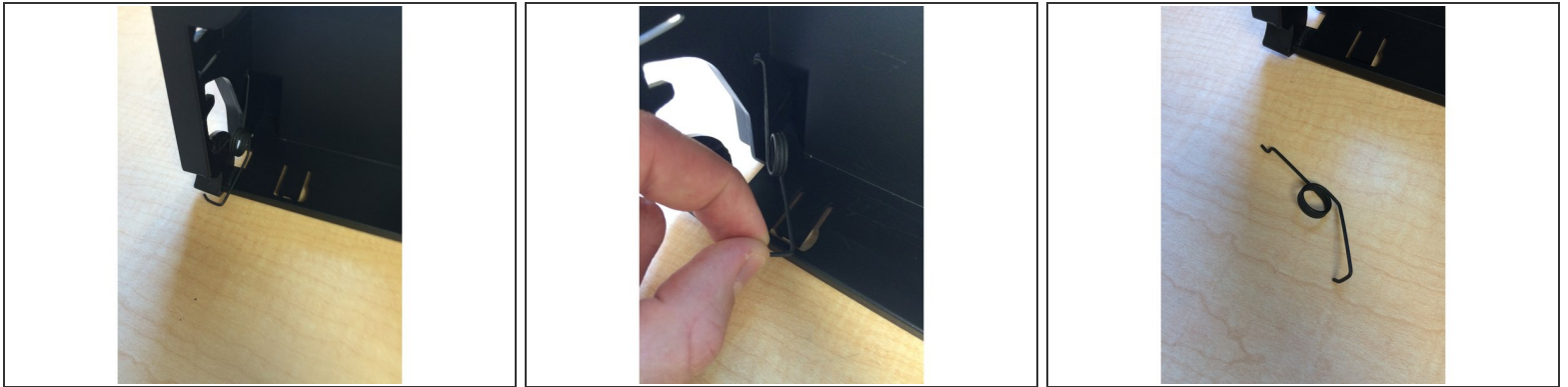


## Step 5



- Separate the front and back parts of the cup holder by opening one of the two cup holder arms.
- Slowly remove the front part of the cup holder by adjusting one side of the cup holder until it is able to break free.
- Take the entire front part of the cup holder out from the back part of the cup holder.

## Step 6



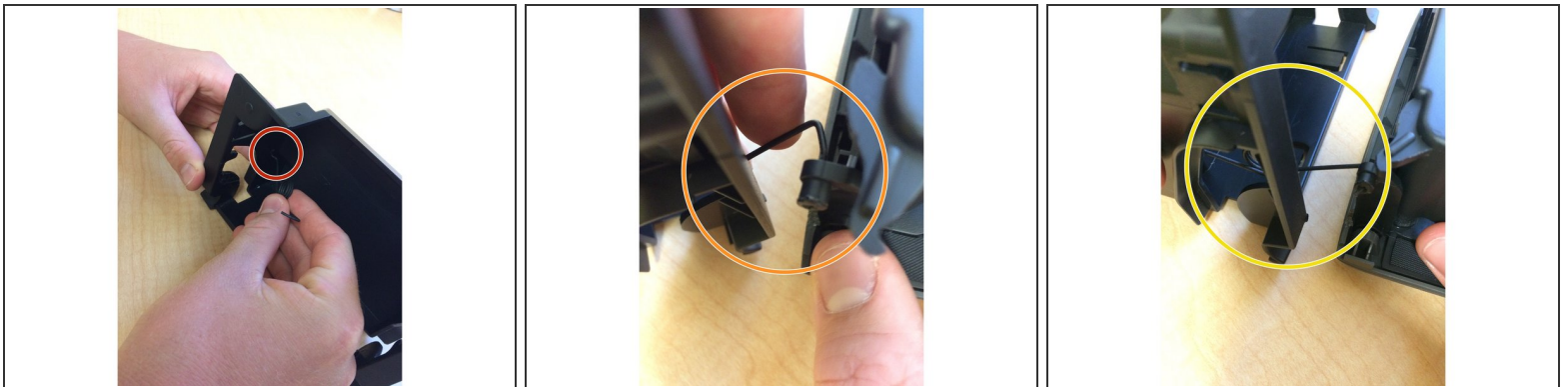
- Remove the spring located in the back part of the cup holder by pinching the end nearest you by moving it up and down and in and out-of-place.

## Step 7



- Check all sides of the cup holder to see what parts are broken. Front, Back, side to side.
- i** This is an extremely important step which will help you understand where you will need to put the super glue later in this repair process.

## Step 8



- Re-insert the shorter end of the spring into the back part of the cup holder.
- Re-insert the longer end of the spring into the front part of the cup holder.
- It is crucial to make sure the spring is properly inserted between both the front and back parts of the cup holder.

## Step 9



- Reinsert the front part of the cup holder into the back part of the cup holder by reversing the steps you took to separate the front and back parts of the cup holder.

## Step 10



- Obtain superglue and observe the proper place to apply the glue once the cup holder is back together.

**i** It is extremely important that you understand where the super glue must be applied.

## Step 11




- Apply a small amount of super glue on each of the broken pieces on each side of the cup holder.

 Use caution while using super glue to avoid skin contact.

## Step 12



- Check to see if the broken parts of the cup holder have stayed connected by the glue, by pressing them together for about 2 minutes

 Make sure the broken parts of the cup holder are glued together correctly.



## Step 13



- Ensure that before the glue dries that the cup holder can be easily opened and closed with no resistance.
- ⓘ You may have to reapply the super glue if the cup holder is unable to open and close with no resistance.

## Step 14



- Re-insert the repaired cup holder into the console by reversing the steps you followed to take it out.
- Ensure that the cup holder can open and close with ease once reinserted back into the console.