



How to Restore a Dining Chair

This guide will allow you to add and/or improve the seats of your dining chairs as well as transform the frame.

Written By: Chuy Mercado



INTRODUCTION

Are your dining chairs due for an upgrade? Most Dining chairs pick up scratches, dents, or may even lose a seat, however, the frame of the chair remains sturdy. By simply sanding, painting, and screwing on a new cushion, you will be able to have brand new chairs at a much smaller price.



TOOLS:

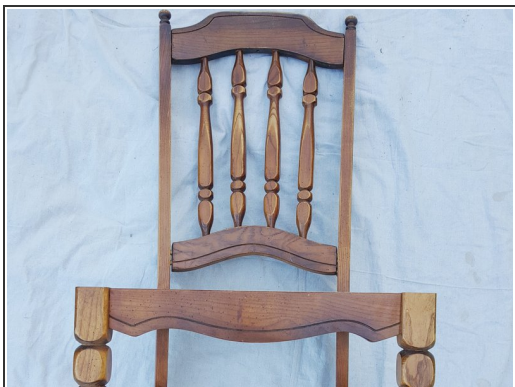
- [Strip of Staples](#) (1)
1/4 in, 6mm
- [Staple Gun](#) (1)
- [Screws](#) (4)
1 - 3/4 inch
- [Sand Paper](#) (1)
(optional)
- [Spray Paint + Primer](#) (1)
Gloss for shiny finish
- [Phillips #1 Screwdriver](#) (1)
- [Microfiber Cleaning Cloths](#) (1)



PARTS:

- [Chair Cushion](#) (1)
- [wood board](#) (1)
cut to dimensions of chair seat
- [Cushion Cover](#) (1)
Fabric may be used

Step 1 — How to Restore a Dining Chair



- Begin with an old chair frame.
- ⓘ For frames in good condition, continue to step 5.
- Using your sandpaper, rub any marks or scuffs off the wood.
 - Always rub with the grain of the wood.

Step 2



- Use the cleaning cloth to wipe off any excess dirt and dust.

Step 3



- Holding the spray paint 6-12 inches away from the chair, apply a light coat of paint.
- Allow it to dry for about 5 minutes.
- Apply a second light coat over the front of the chair and allow it to dry for 10 minutes.

Step 4



- Flip the chair over.
- Repeat step 3 for the back side.

Step 5



- While the paint dries, work on the seat.
- Grab the wood board and set it down.
- Grab the desired cushion and rest it on top of the board.
 - Make sure to align all four corners of the wood to the corners of the cushion.

Step 6



- Now grab the cushion cover.
 - ✦ You may use fabric (cut to size) instead of a cushion cover.
- Place your cover on top of the cushion, aligning all four corners.

Step 7



- Grab the stack of wood, cushion and cover and flip it over.
- Align them so they stack up evenly.
 - ❗ Fragments of the cushion cover may stick out a little.

Step 8



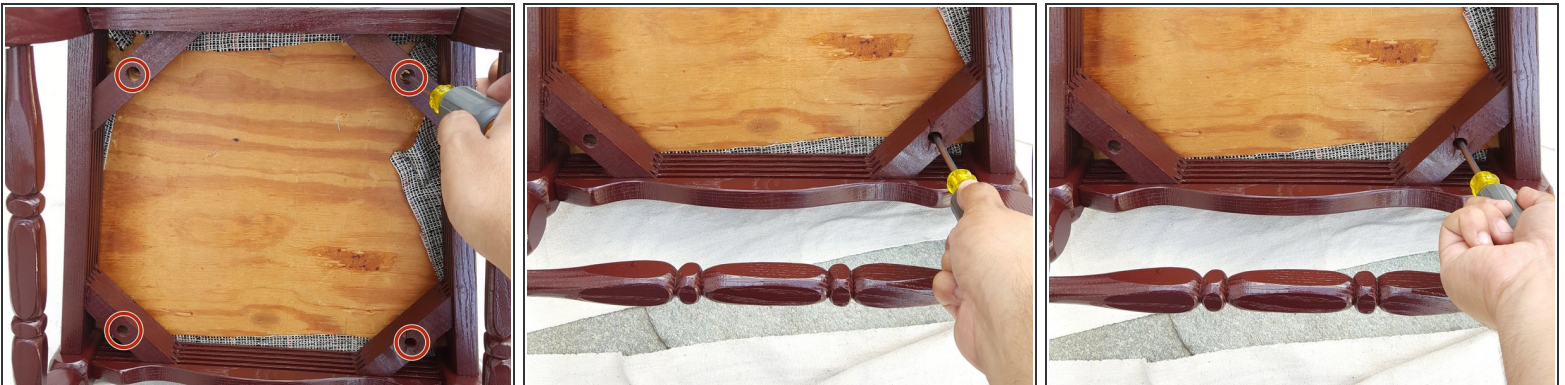
- Fold the sides of the cover over the board and cushion keeping them as close to the center of the board as possible.
- Select a side to start on.
 - With the staple gun, staple the end of the cushion cover you are holding into the board.
- Rotate the board and staple down the other side.
- Continue to staple down the sides, placing staples about 1 inch apart.
- Fold the corners in and staple them onto the board.

Step 9



- Make sure that the paint on the chair frame has completely dried up.
- Grab your newly covered cushion and place it on the seat of the chair frame.
- Holding on to both the cushion and the frame, flip the chair over.

Step 10



- Place the screws in the screw holes.
 - Tighten the screws with the philips screw driver.
- ⚠ To avoid the wood from cracking, do not apply to much force when turning screwdriver.

Step 11



- Make good use of your brand new chair.