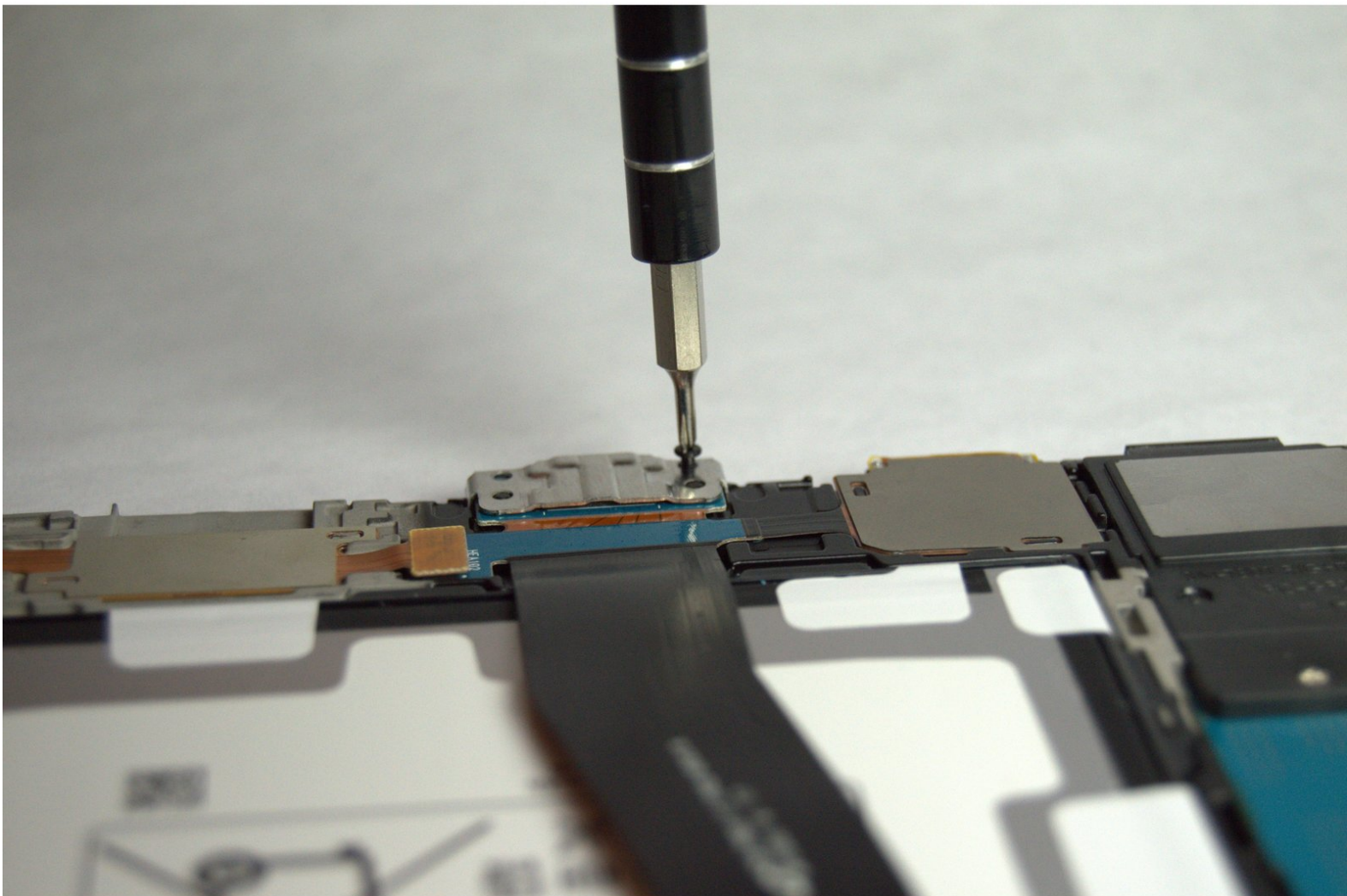




Galaxy Tab S 10.5 Charge port Replacement

How to remove a faulty charge port.

Written By: Jordan Soto



INTRODUCTION

This guide will show how to replace the charge port of the device.



TOOLS:

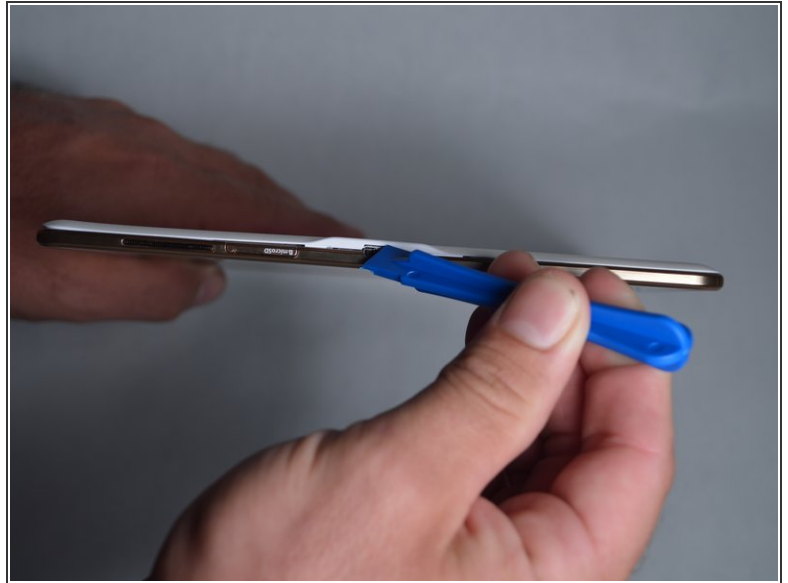
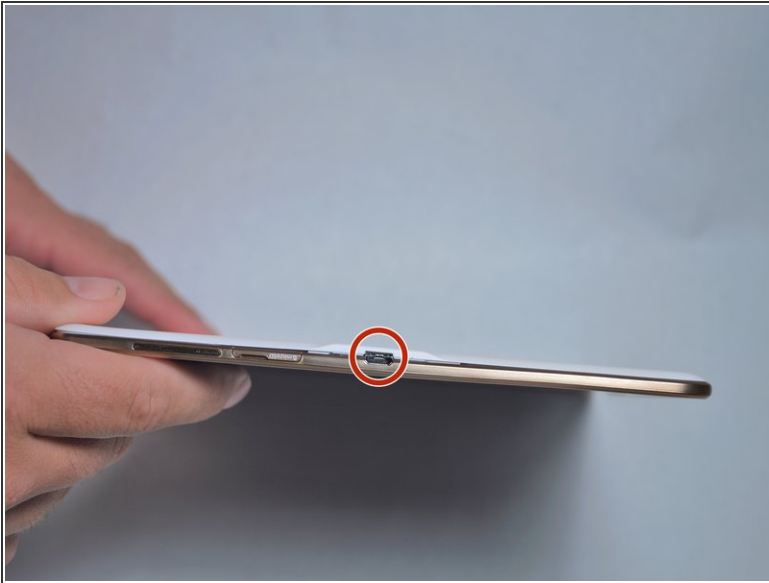
- [Screwdriver \(plate\)](#) (1)
- [Screwdriver \(cross\)](#) (1)



PARTS:

- [Galaxy Tab S 10.5 \(Wi-Fi\) Charging Assembly](#) (1)

Step 1 — Disassembling Galaxy Tab S 10.5 Back Cover



- Place the plastic opening tool into the SD card slot or charge port.
- Try in an upward motion until you see a separation between the tablet and back cover.

Step 2




- Work around the entire device by sliding the plastic opening tool around the rim.
- ⓘ If this is the first time, it will be hard to separate the back cover from the tablet.
- ⓘ The clips are approximately 5 cm apart. While working around the device, the clips will make a dislocating sound when disconnected.

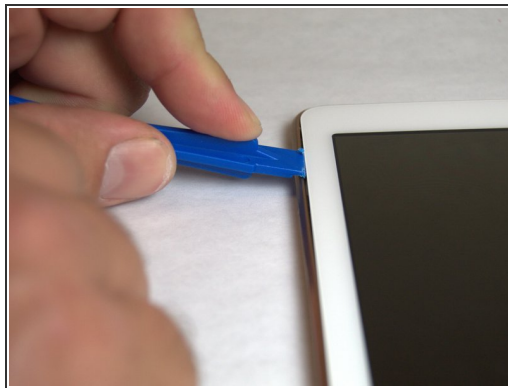
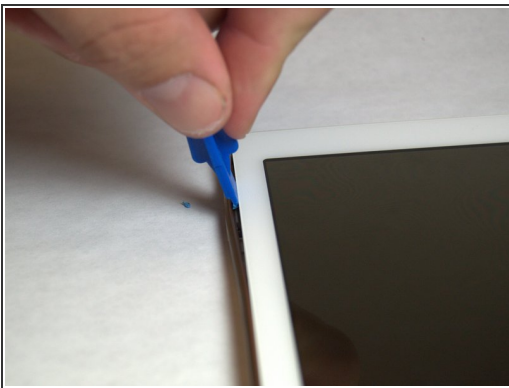
Step 3



- Remove the back cover once all links have been separated.

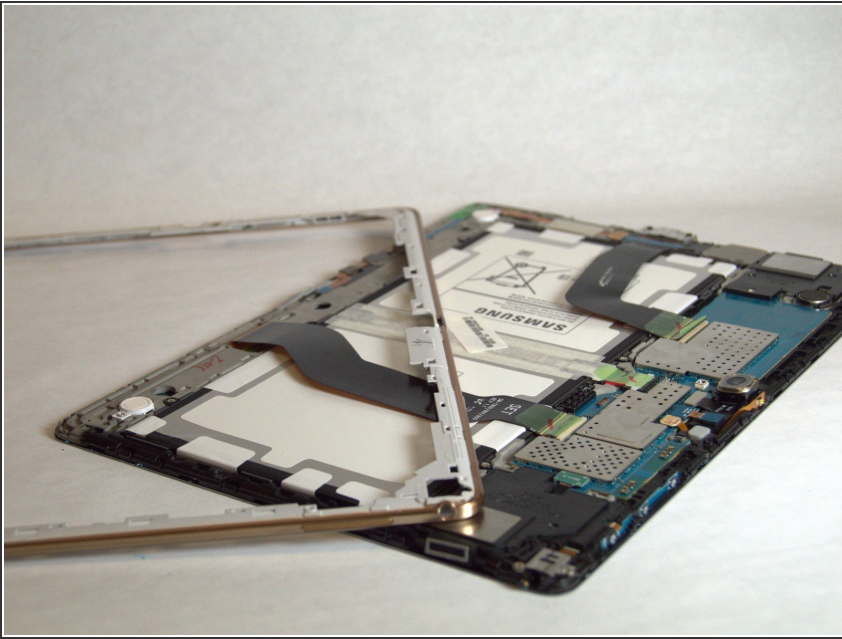
 Be careful when touching any of the internal components of the tablet.

Step 4 — Back Rim Cover



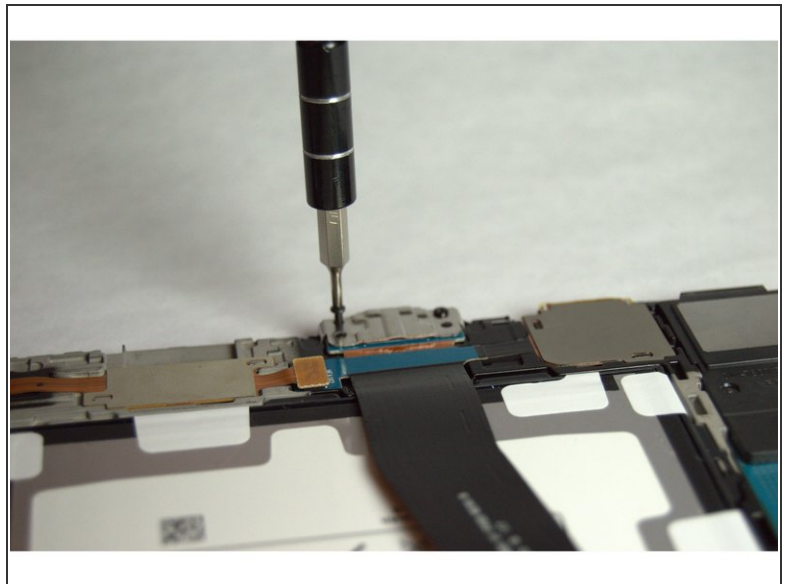
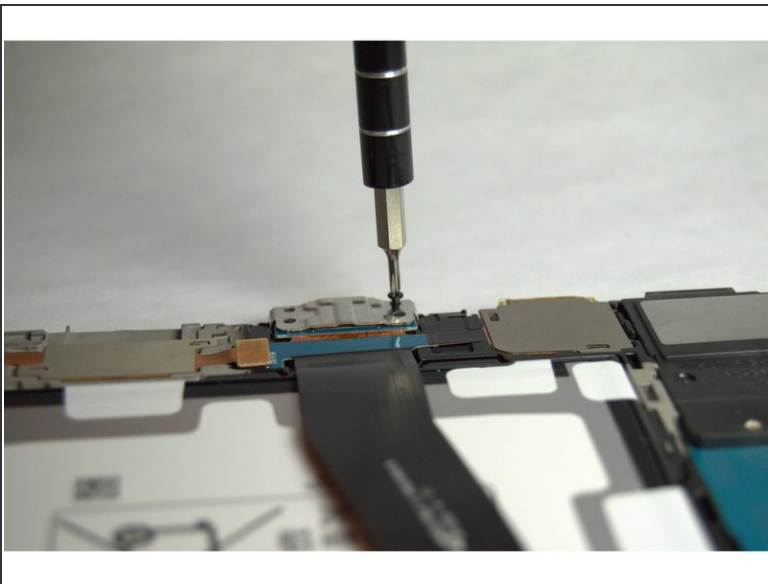
- Place the plastic opening tool in between the outer rim.
- Move the tool in a downward motion to separate the 2 parts.
- Run the tool along the rim to disconnect all connectors holding the outer rim to the back of the device.

Step 5



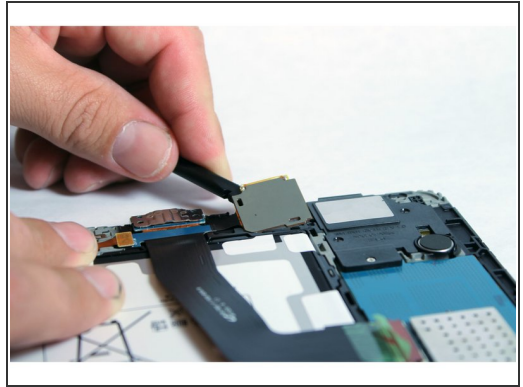
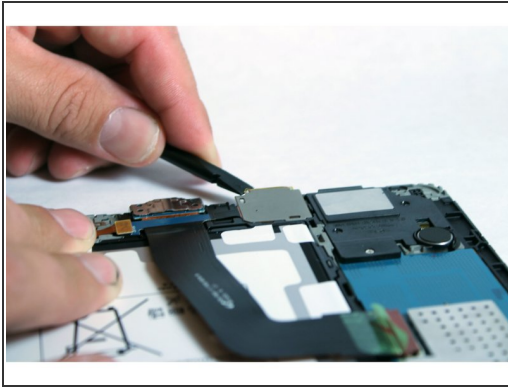
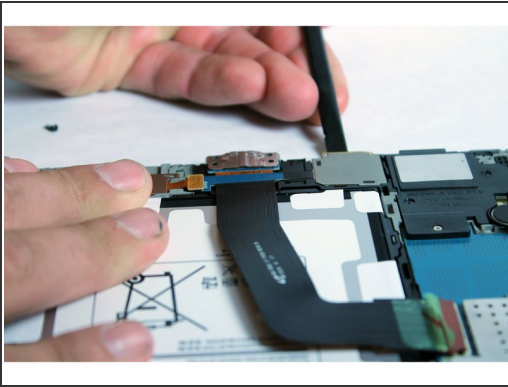
- Repeat this step for all four sides, then remove the rim.

Step 6 — Charge port



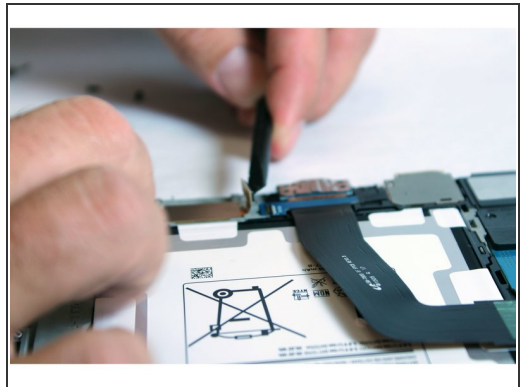
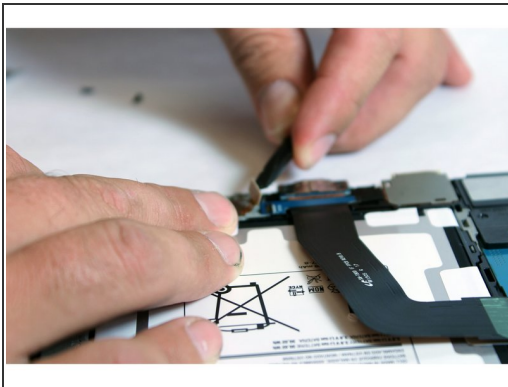
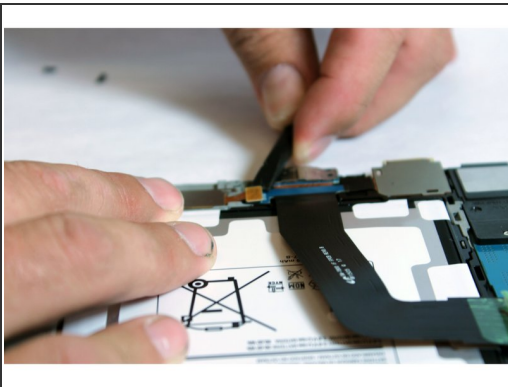
- Remove the two 2 mm Phillips #000 screws in the charge port bracket.

Step 7



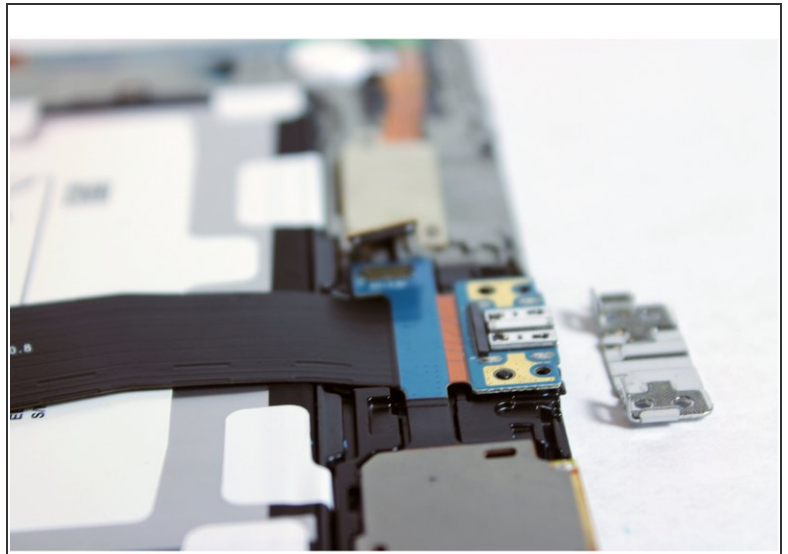
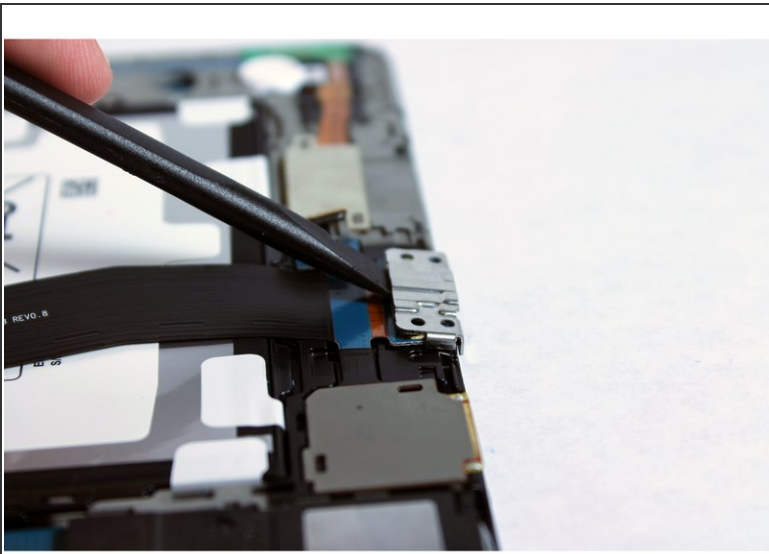
- Using the spudger, pry out the SD card slot.

Step 8



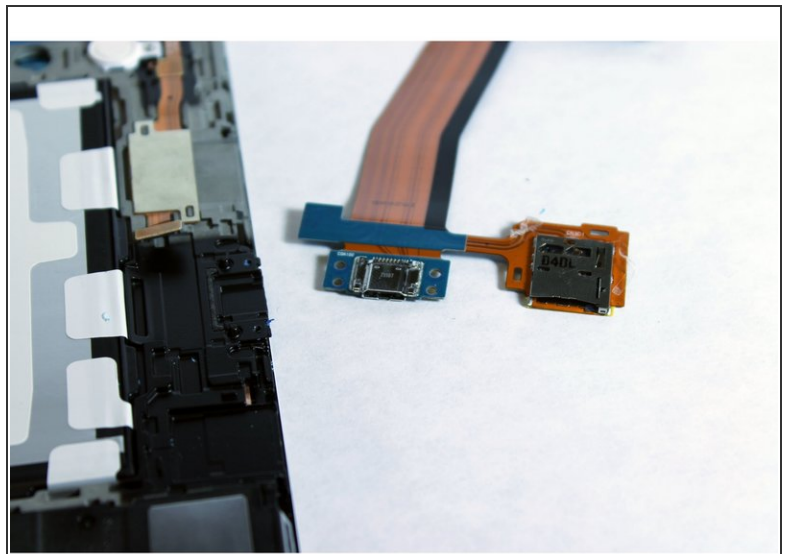
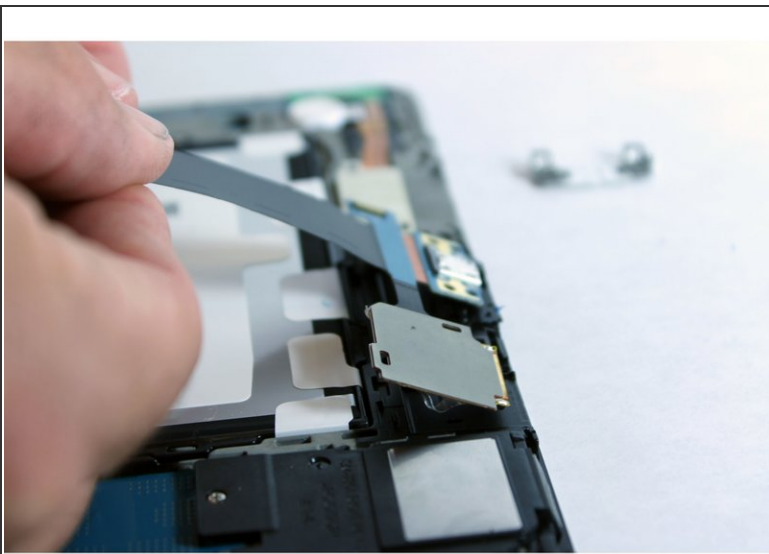
- Using the spudger, disconnect the charge port from the motherboard.

Step 9



- Pry out the charge port bracket.

Step 10



- Pull out the charge port and the SD card slot.

To reassemble your device, follow these instructions in reverse order.