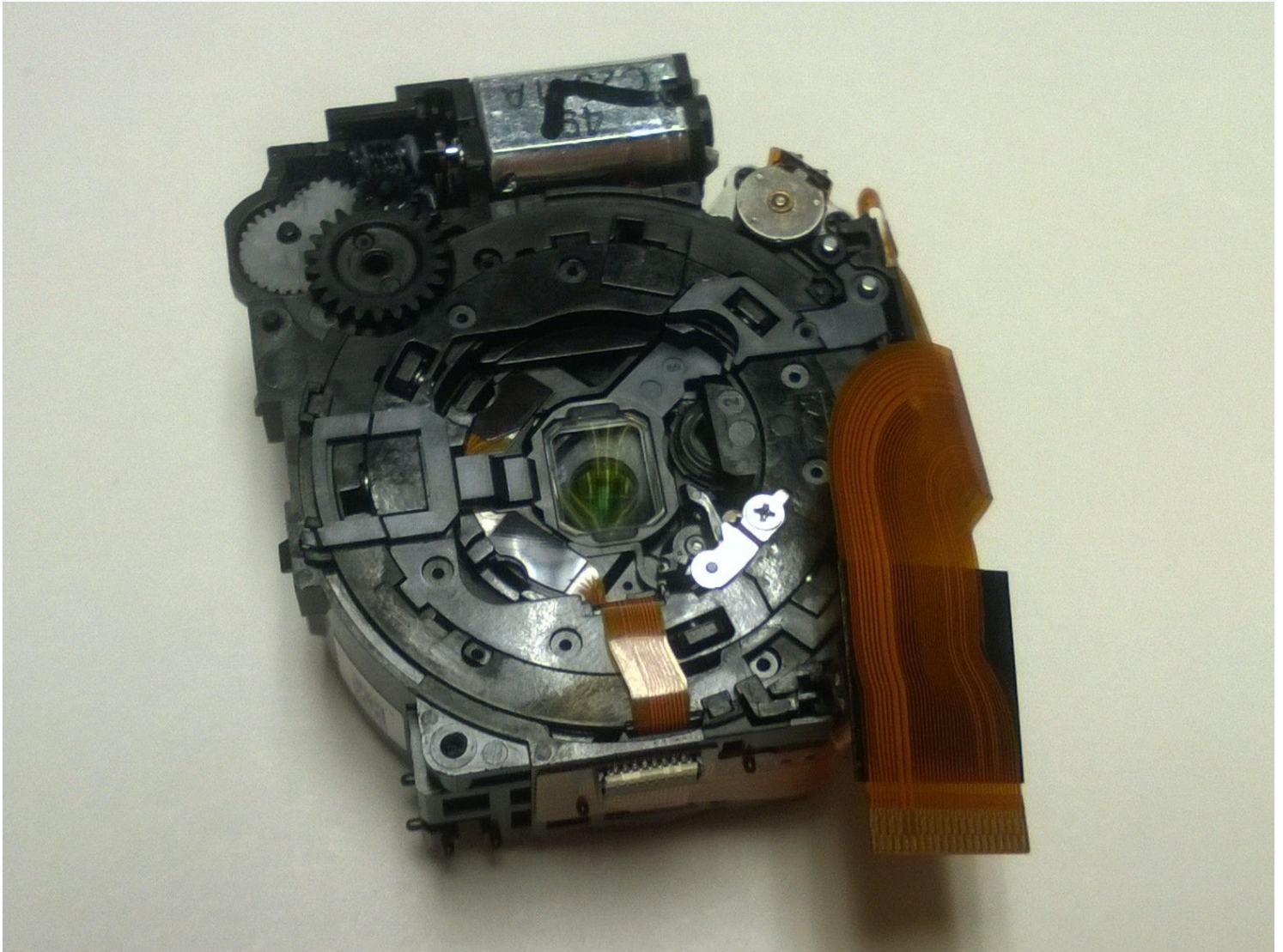




Nikon Coolpix S6300 Zoom Lens Gears

After following the prerequisite guides, the...

Written By: Hung



INTRODUCTION

After following the prerequisite guides, the gear can be reached by removing the lens apparatus. When the primary gear is exposed, it can simply be lifted out of the camera and inspected.

TOOLS:

Phillips #00 Screwdriver (1)

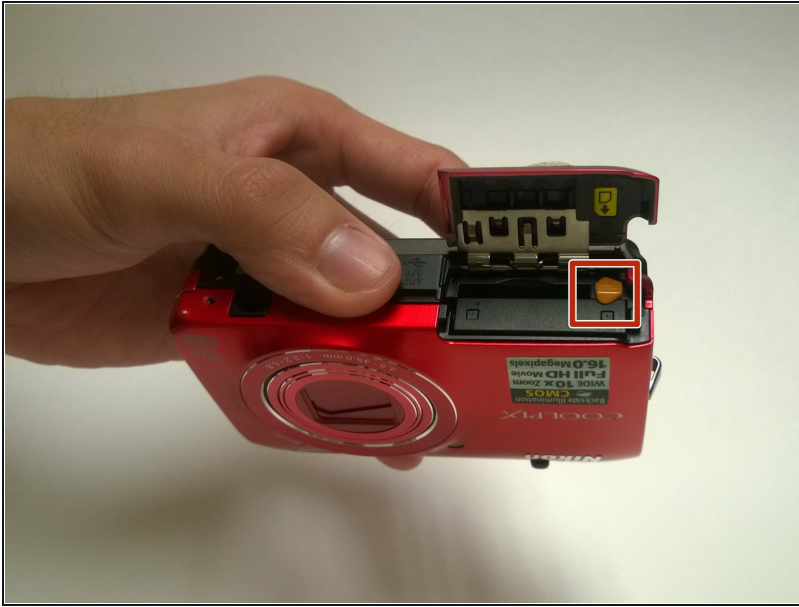
iFixit Opening Tool (1)

Step 1 — Battery



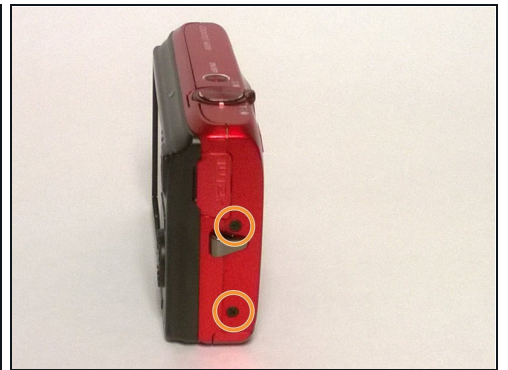
- Place the camera facing upwards.
- Press down on the battery cover and slide towards the front face of the camera.

Step 2



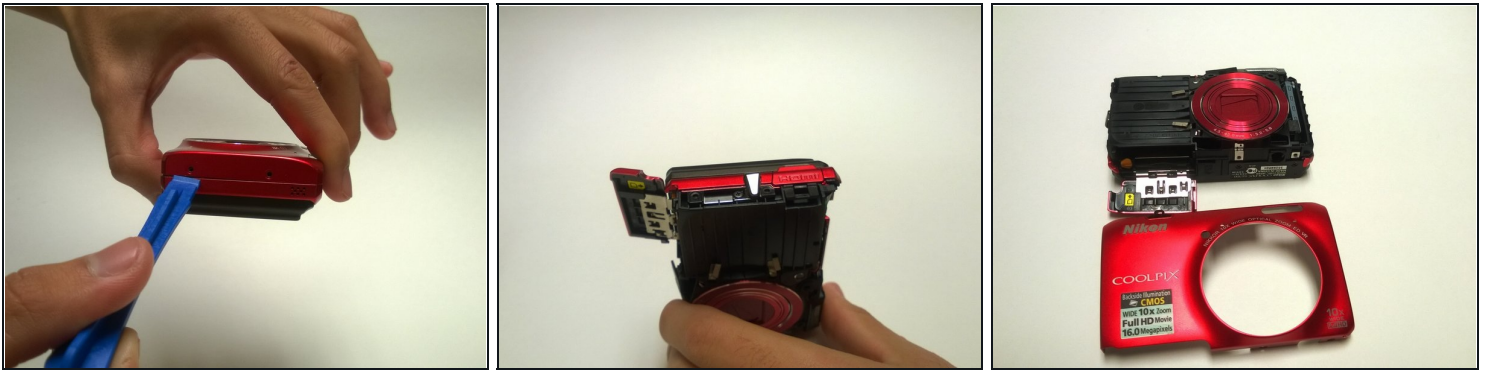
- Rotate the orange battery clip in the camera to release the battery.

Step 3 — Buttons



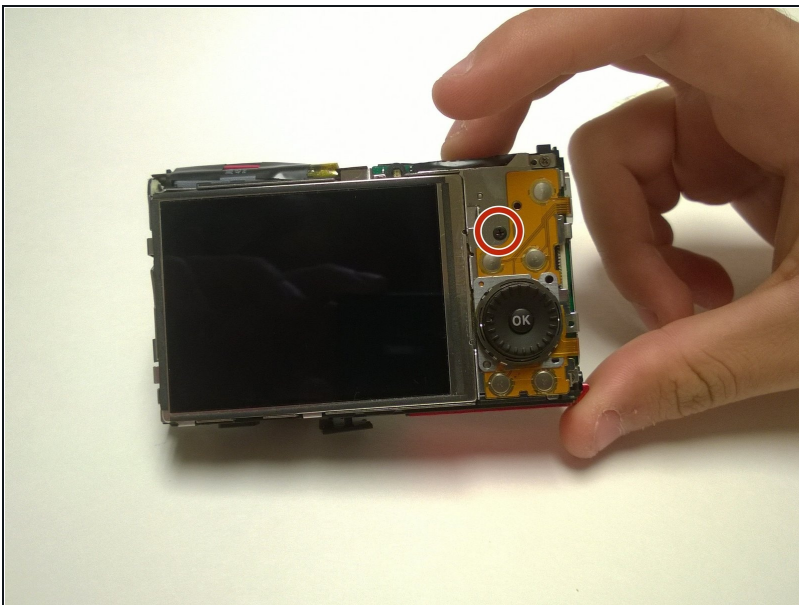
- Locate the eight outer PH 2mm screws on the device.
- Using the PH00 screwdriver remove all of the screws from the camera.

Step 4



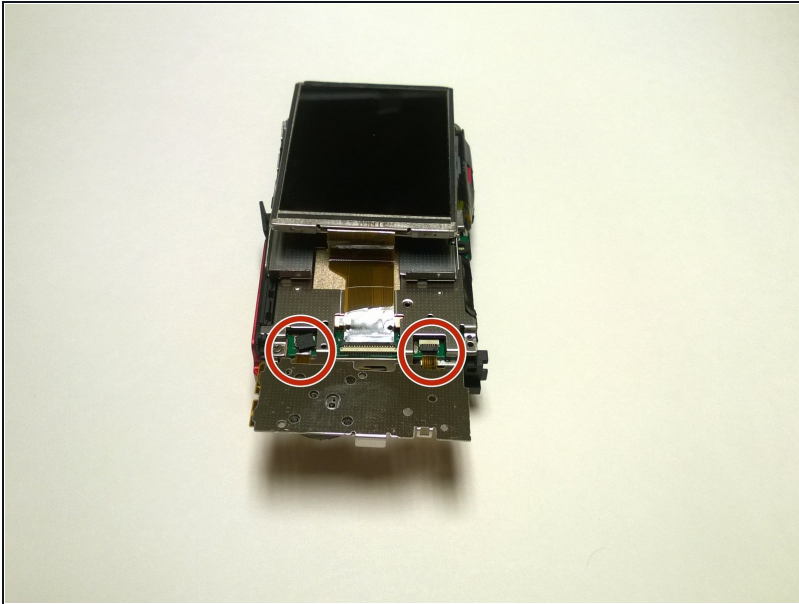
- Using a plastic opening tool, gently pry off the front and rear plates.
- Be patient with this step, do not force the clips holding the plates together.

Step 5



- Using a Phillips #00 screwdriver, remove the PH 2mm screw located to the right of the screen, above the OK dial.

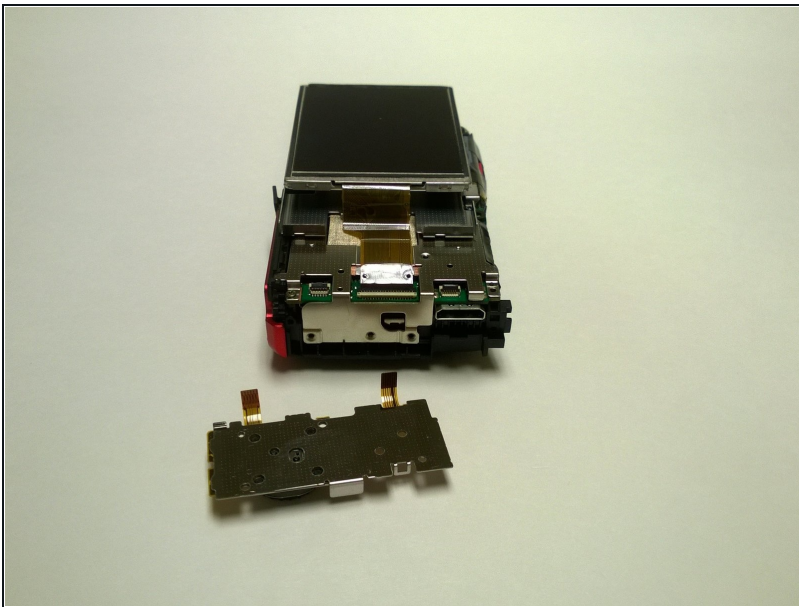
Step 6



- Remove the two clasp using a plastic spudger

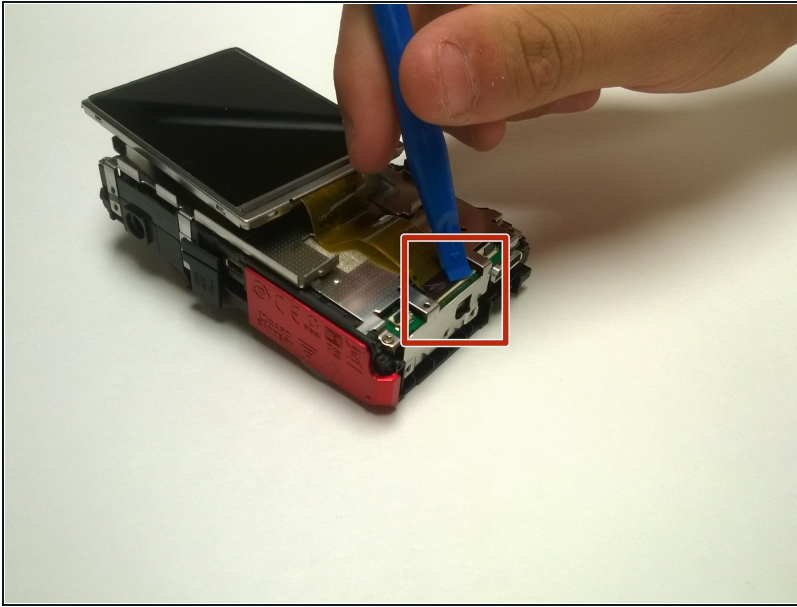
⚠ Be careful when removing the clasp to prevent ripping of the clasp

Step 7



- You may now remove the internal panel of the buttons

Step 8 — Display

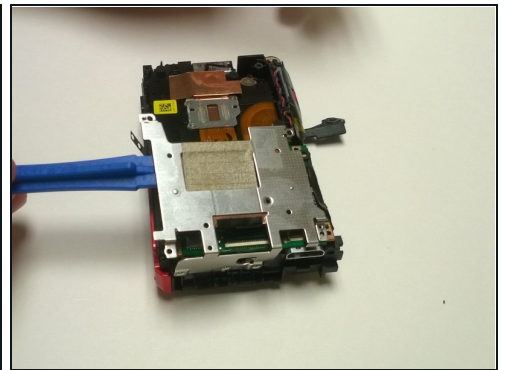
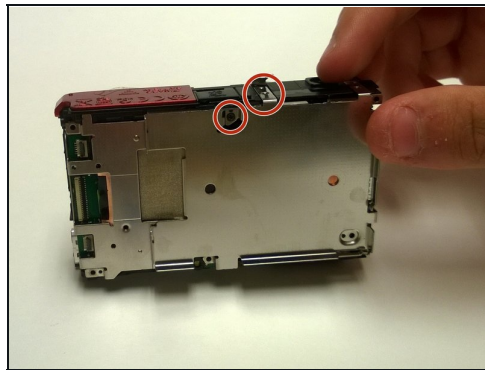
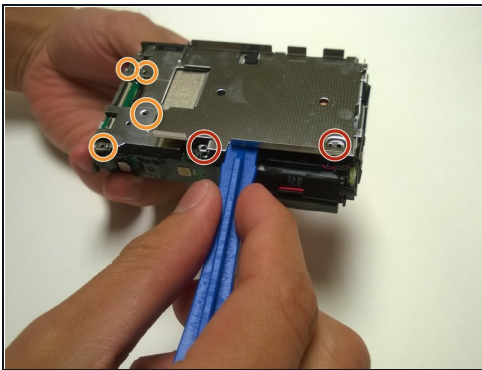


- Remove the clasp from the ribbon cable using the plastic spudger.

⚠ Make sure to be gentle when removing the clasp to prevent it from ripping.

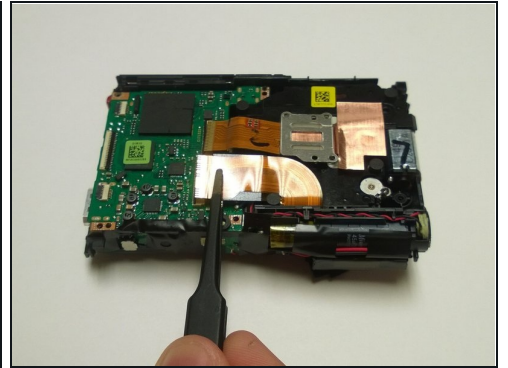
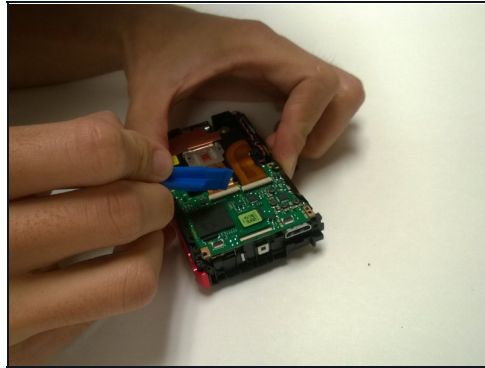
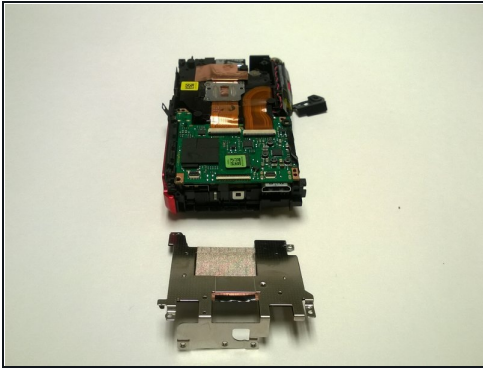
- You may now remove the display.

Step 9 — Polarizing Lens



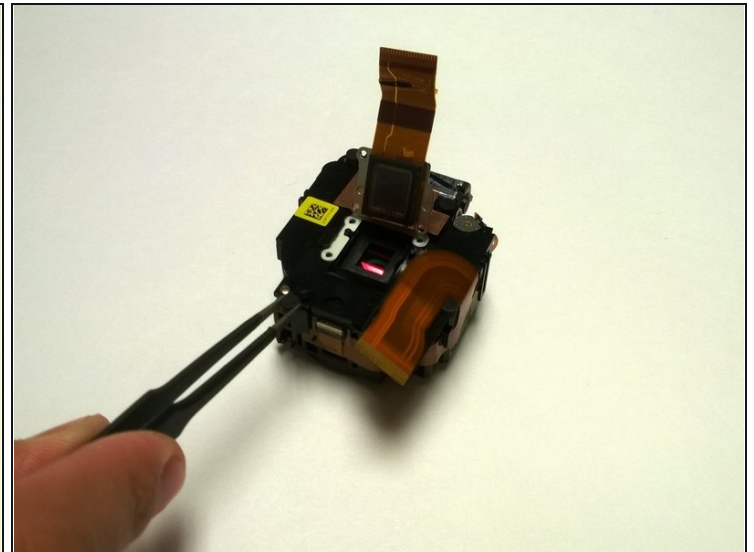
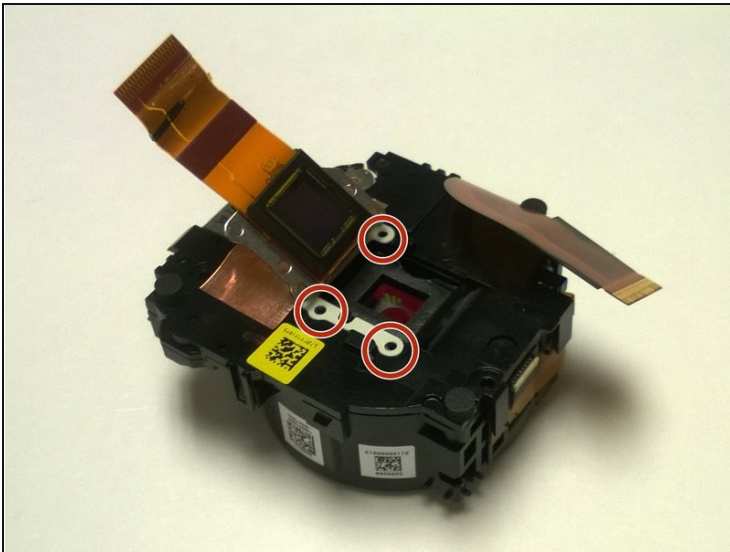
- Remove the four PH00 2.5 mm screws around the edges of the display plate.
- Remove the three PH00 2 mm screws from the sides of the buttons plate and the 2.5 mm screw from the center of the buttons plate.
- Lift the buttons plate out of the camera with the plastic tool.
- Lift the display plate out of the camera with the plastic tool.

Step 10



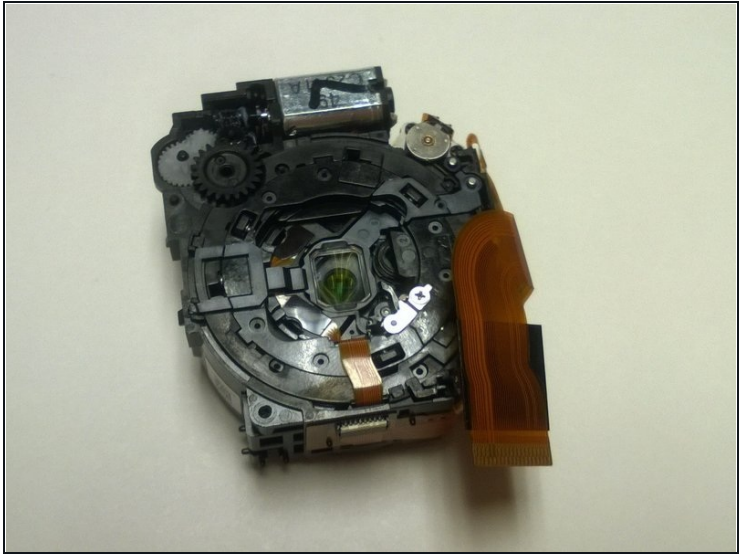
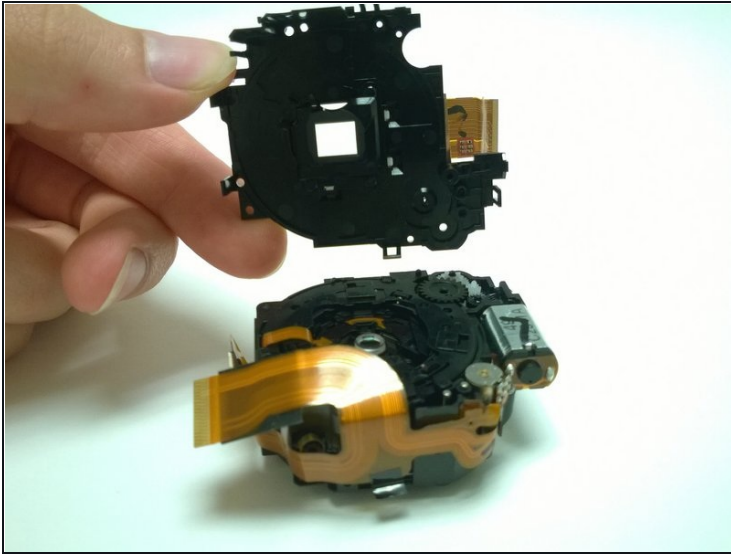
- Use the plastic opening tool to gently flip the white folders at the end of the ribbon cables.
- Use this [tweezers](#) to gently pull the cables out of the holders.
- Lift the lens apparatus out of the rest of the camera by pushing the front of lens up from the bottom.

Step 11



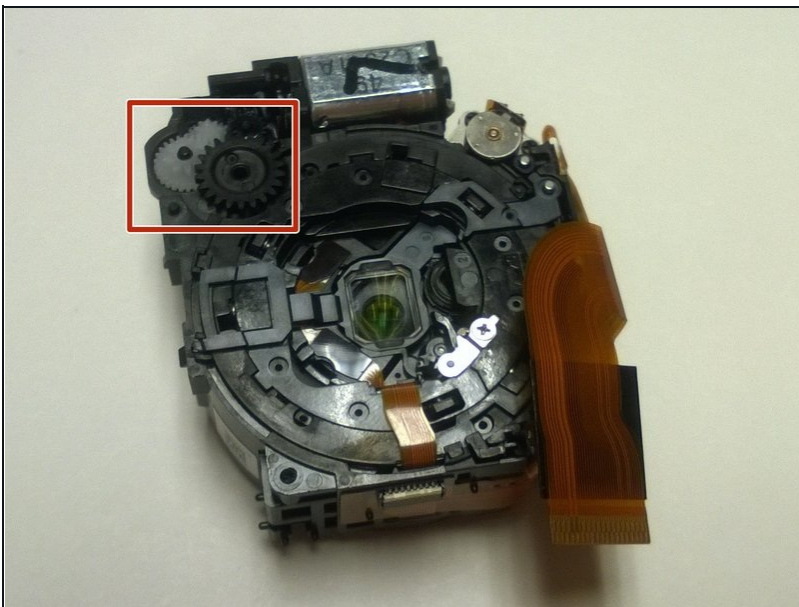
- Use the plastic opening tool to flip the two white clips holding the ribbon cables.
- Use tweezers to pull the cables from clamps.
- Use the PH00 screwdriver to remove the three 2 mm screws around the first lens area.

Step 12



- Lift the first lens from the rest of the lens apparatus.
- Use thin tweezers to lift and remove the polarizing lens from the apparatus.

Step 13 — Zoom Lens Gears



- Check to see if there are any items stuck inside the gear.
- Carefully remove items using [tweezers](#).
- If the gears are popped out of place, carefully push the gears back into its original position shown in the picture

To reassemble your device, follow these instructions in reverse order.