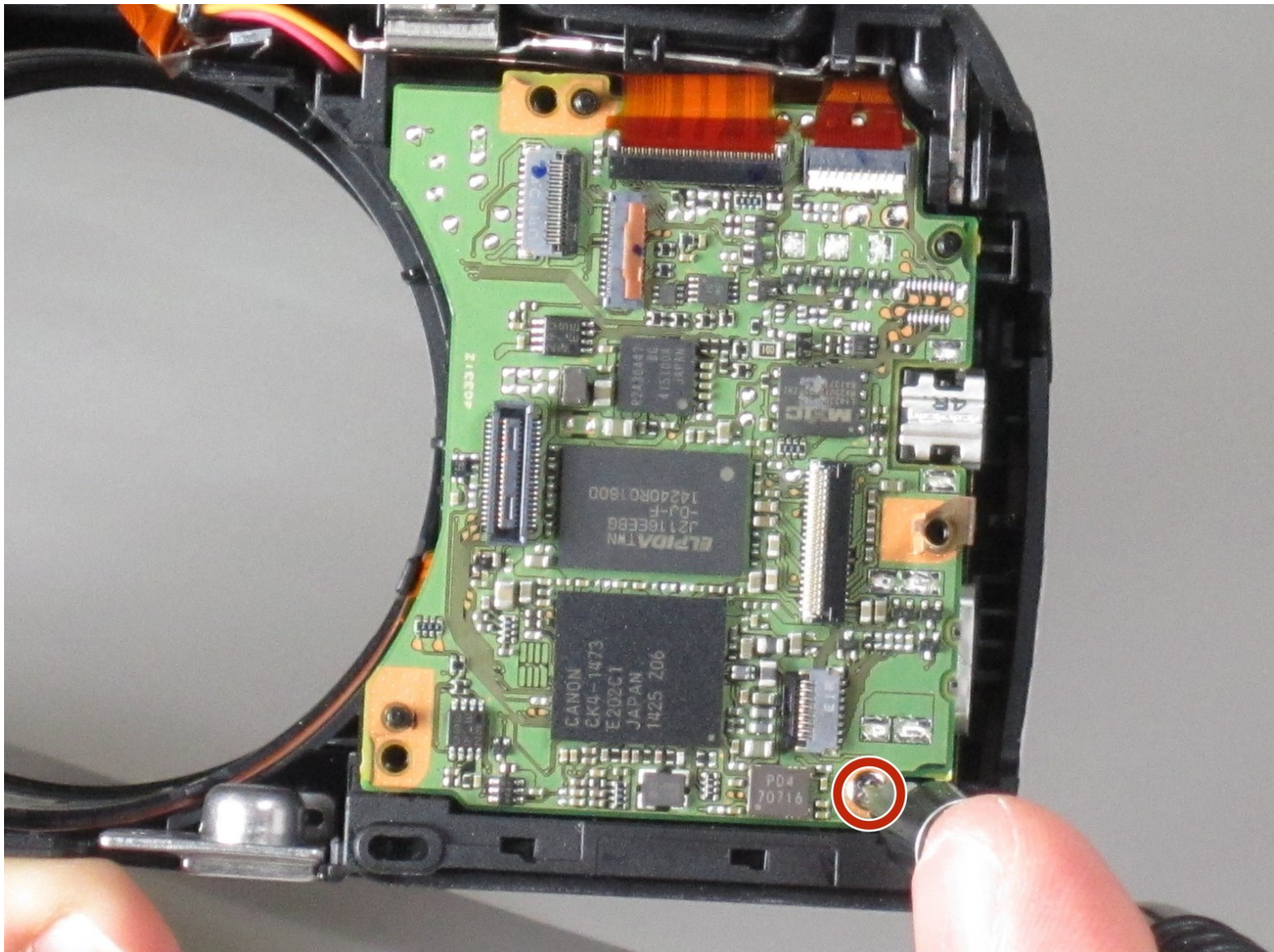




# Canon PowerShot SX520 HS Motherboard Replacement

This guide will demonstrate how to remove the motherboard for replacement.

Written By: Kyle Crowley



---

## INTRODUCTION

If your camera is physically damaged, it's possible that the motherboard was affected as well. This page is a step-by-step guide on how to remove and replace the motherboard.



### TOOLS:

- [Phillips #000 Screwdriver](#) (1)
-

## Step 1 — Battery



- Using your fingers, slide the battery compartment door to the right until it unlocks.

## Step 2



- Rotate the door along hinges to open.
- Take out the battery with your fingers.



### Step 3 — Back Face



- Remove 2-3.4 mm screws that secure the back panel using a Phillips #000 screwdriver.
- Remove 4-4 mm screws on the left and right sides of the camera using a Phillips #000 screwdriver.

### Step 4



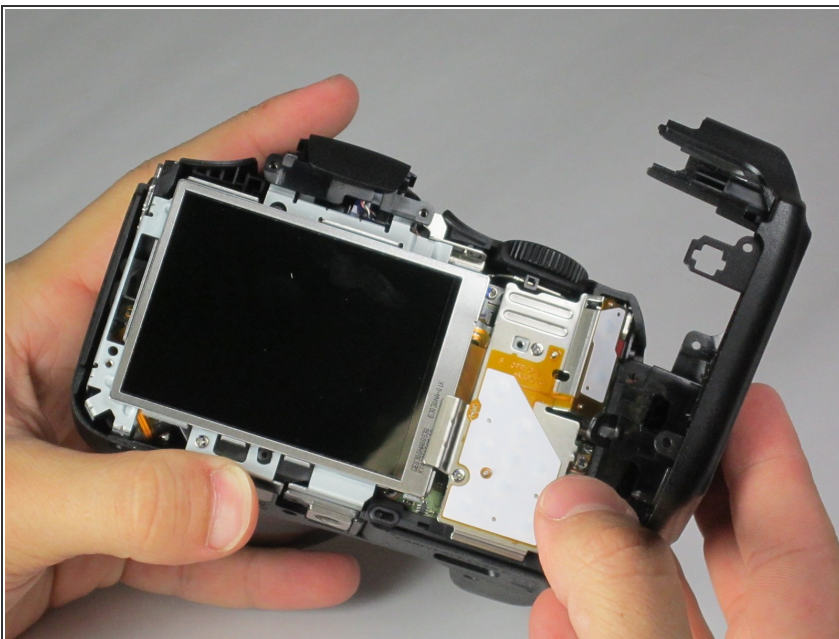
- Remove 2-4 mm screws that secure the bottom of the camera using a Phillips #000 screwdriver.

## Step 5



- Pull back the rubber facing to access the A/V and HDMI output compartment.
- Remove 1-3.4mm screw inside the compartment using a Phillips #000 screwdriver.

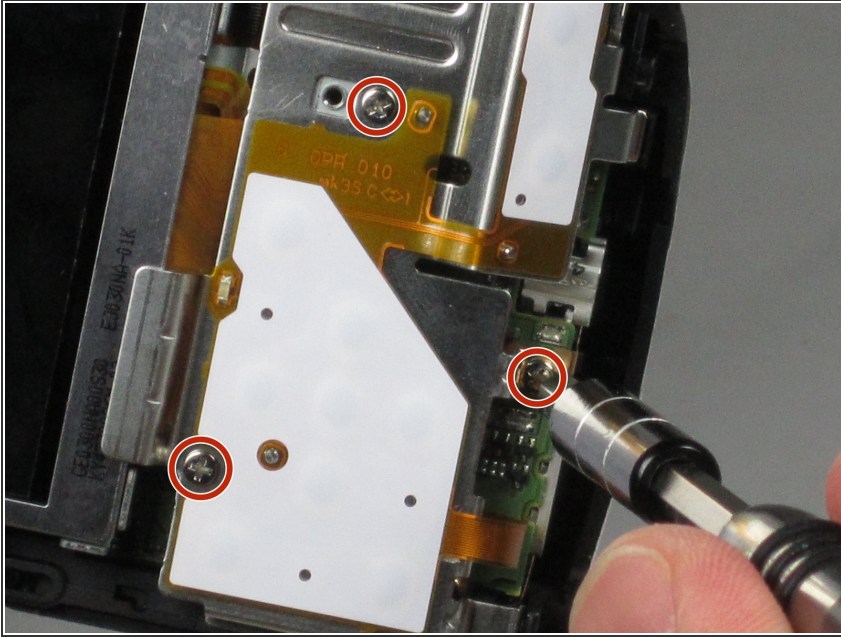
## Step 6



- Once all screws are removed, pull the back facing off with your fingers.

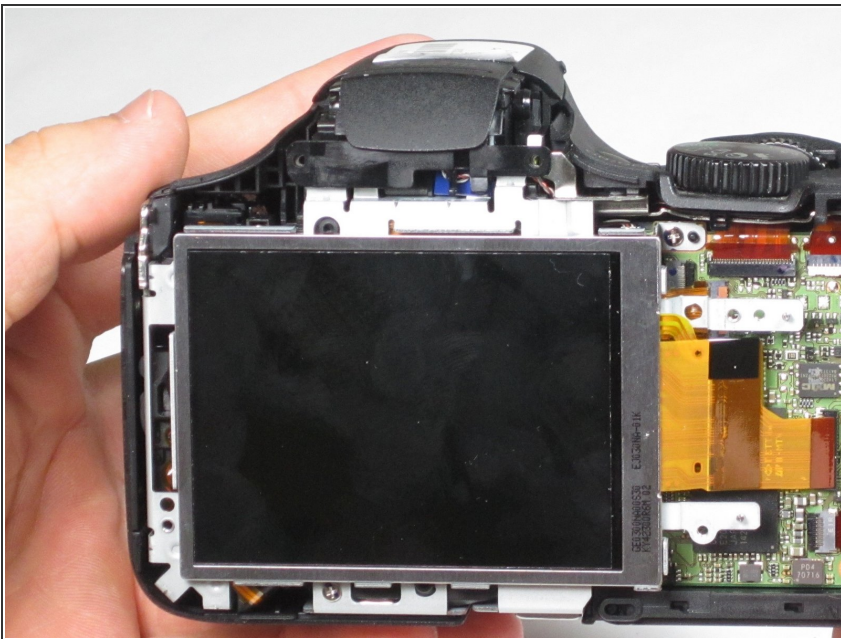


## Step 7 — LCD Screen



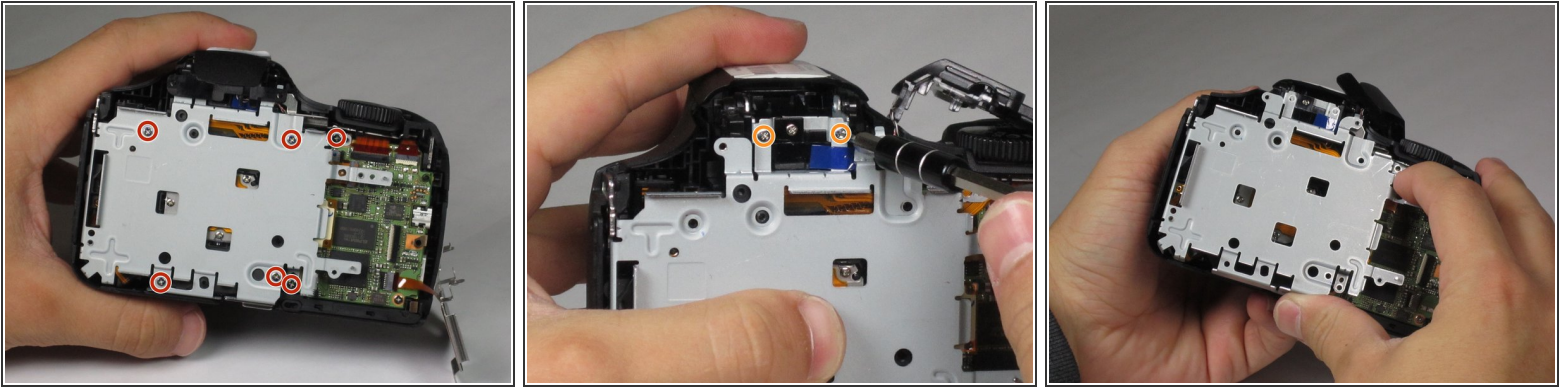
- Remove 3-4.4 mm screws that secure the small metal plate using a Phillips #000 screwdriver.

## Step 8



- Carefully pop out the LCD screen with your fingers.

## Step 9 — Metal Plate



- Remove 6-4.4 mm screws that secure the metal cover using a Phillips #000 screwdriver.
- Remove 2-2.5 mm screws that secure the back panel using a Phillips #000 screwdriver.
- After all 8 screws are removed, pull the metal plate out with your fingers.

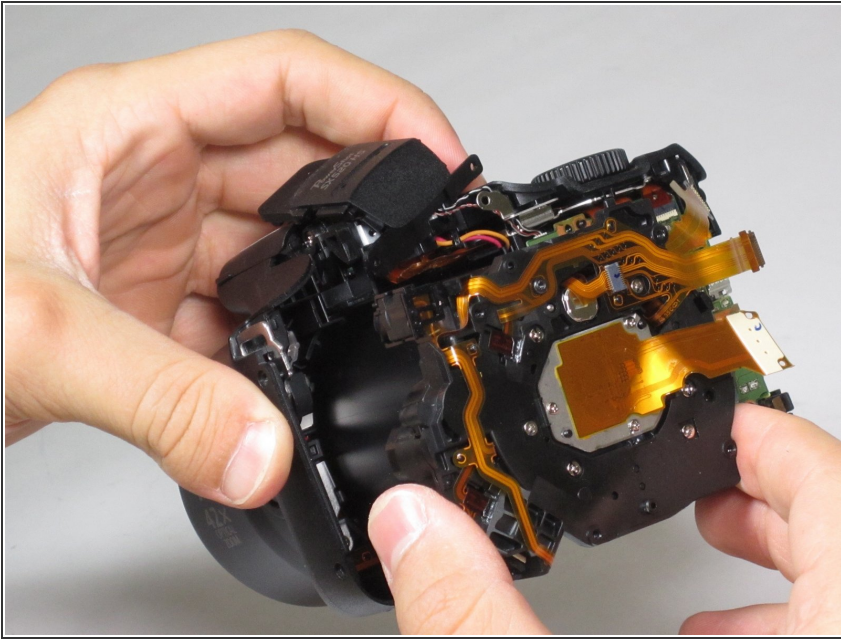
## Step 10 — Lens



- Unclip the large cable by pulling up on the metal part with your finger.
- Slide out the 2 smaller cables with your fingers.

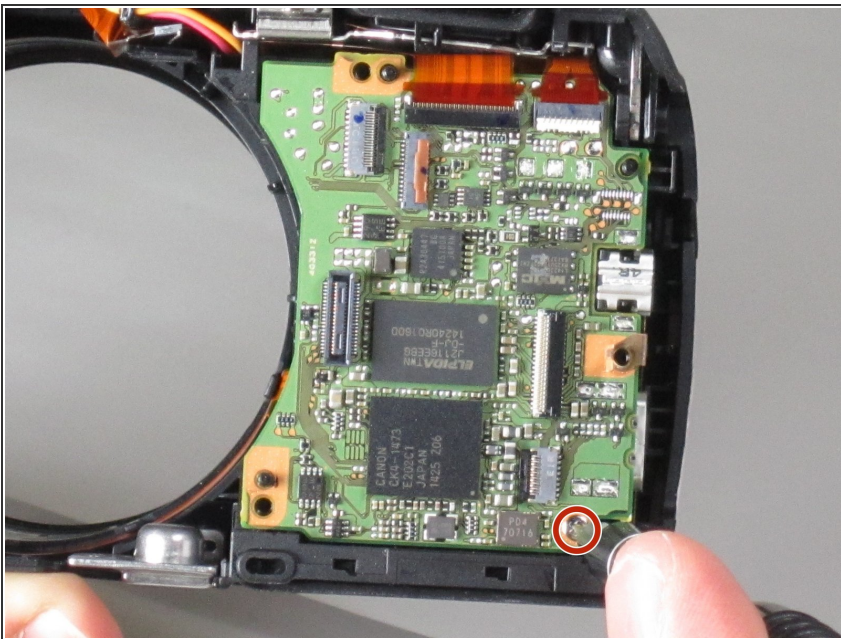


## Step 11



- Lift up the lens by grabbing the sides with your fingers.

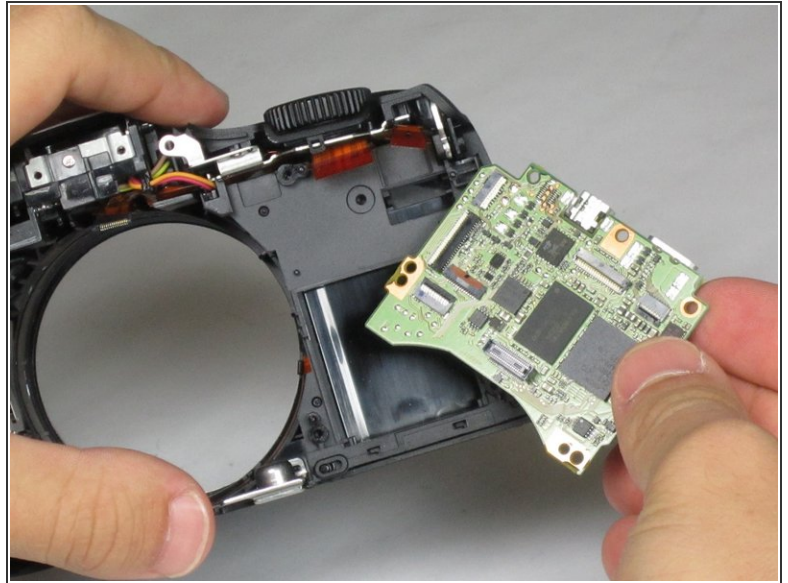
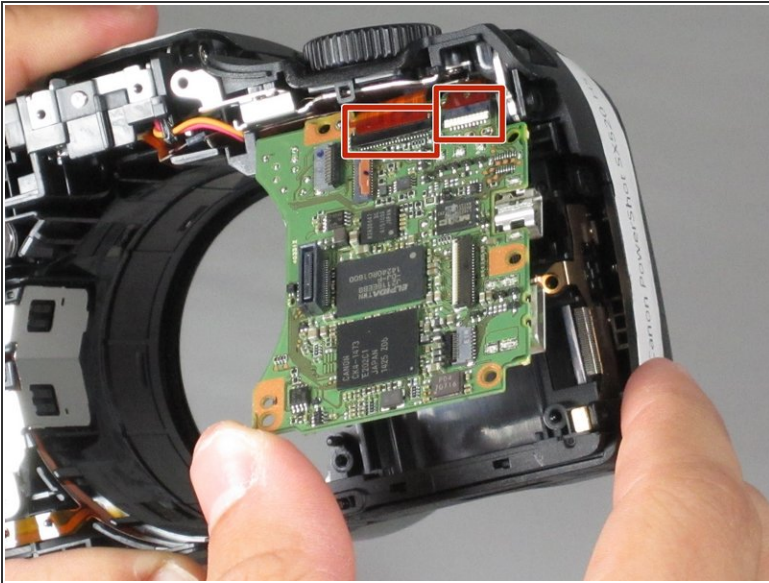
## Step 12 — Motherboard



- Remove 1-2.5 mm screw using a Phillips #000 screwdriver.



## Step 13



- Disconnect the two orange serial cables at the top of the motherboard using your fingers.
  - Gently remove the motherboard using your fingers.
- ⚠ Too much force will break the motherboard.

To reassemble your device, follow these instructions in reverse order.