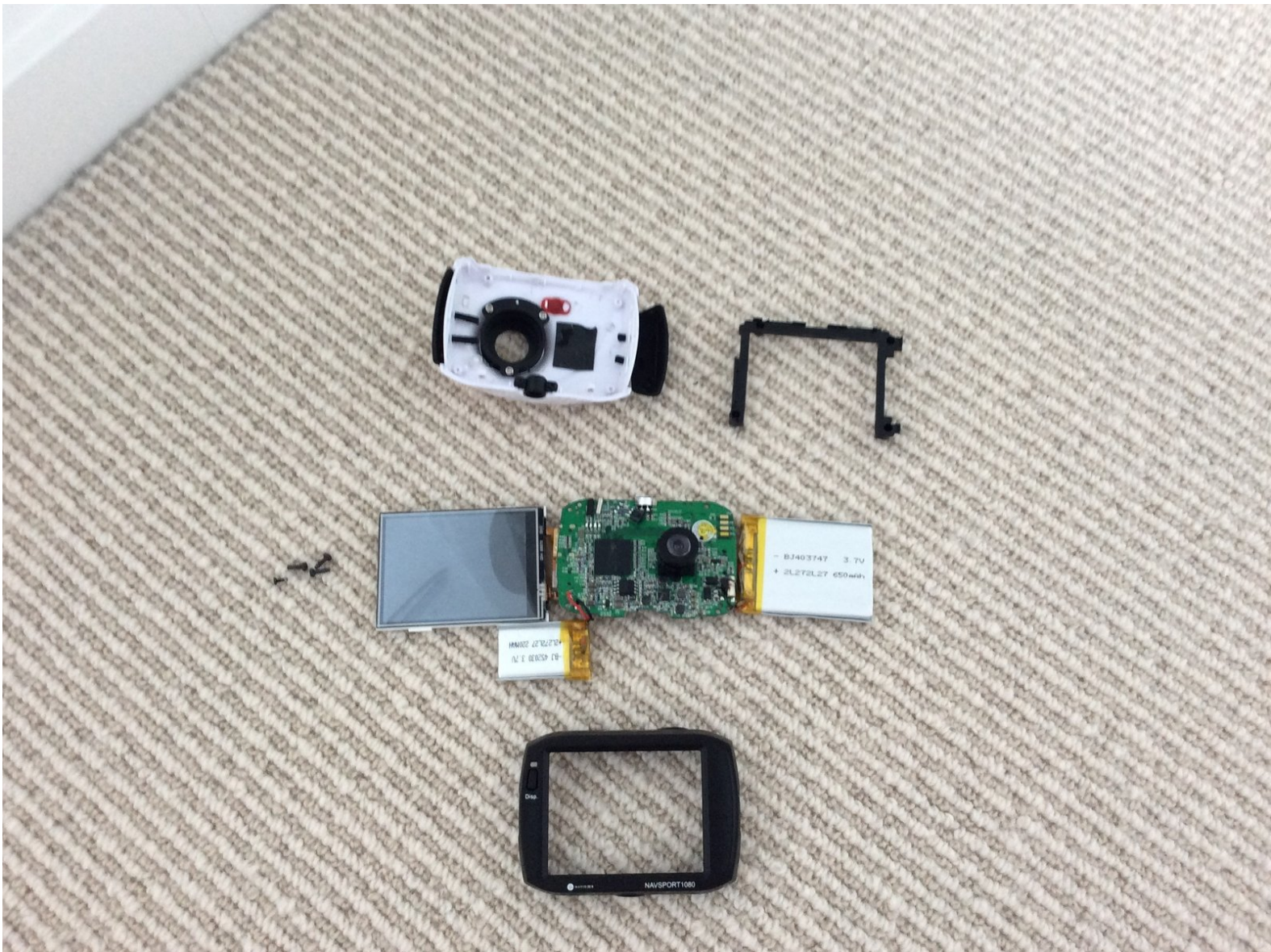




Navig8r Navsport 1080p - Teardown

I will be showing you what is inside the Navig8r Navsport 1080p sportscam.

Written By: Zach luc



INTRODUCTION

I will be showing you what is inside the Navig8r Navsport 1080p sportscam.




TOOLS:

- [Essential Electronics Toolkit](#) (1)
-

Step 1 — Finding the screws



- Peel off the sticker under the camera, it will reveal 2 Phillip - Headed screws.

 Peeling off the sticker below will void your warranty, please do this at your own risk.

Step 2 — Taking off the outline



- Once done unscrewing them, carefully take off the black outline of the screen.

Step 3 — Taking off the screen



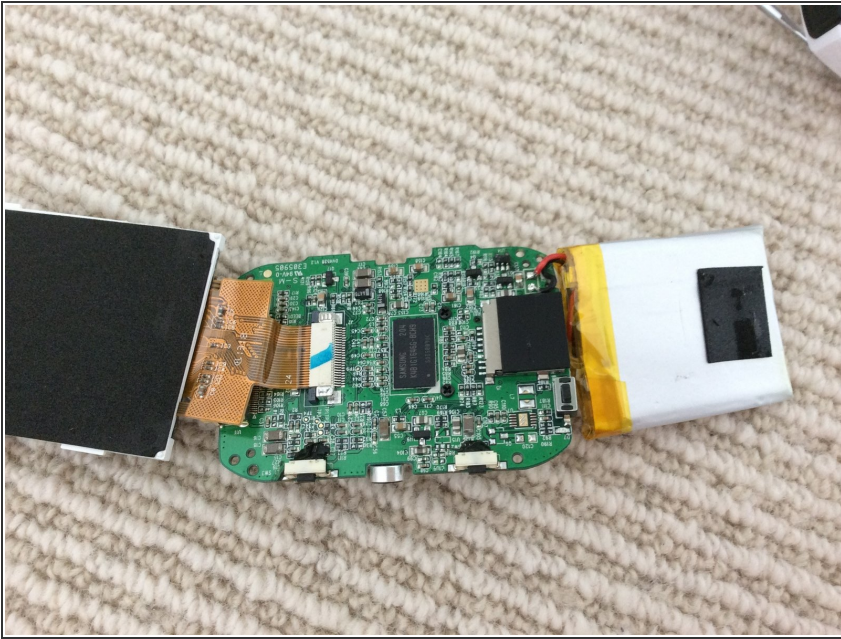
- Once you have done that, slowly take off the screen, there will be 4 Phillip - Head screws.
- ❗ The top left screw is the hardest one to take off.

Step 4 — Taking off the battery



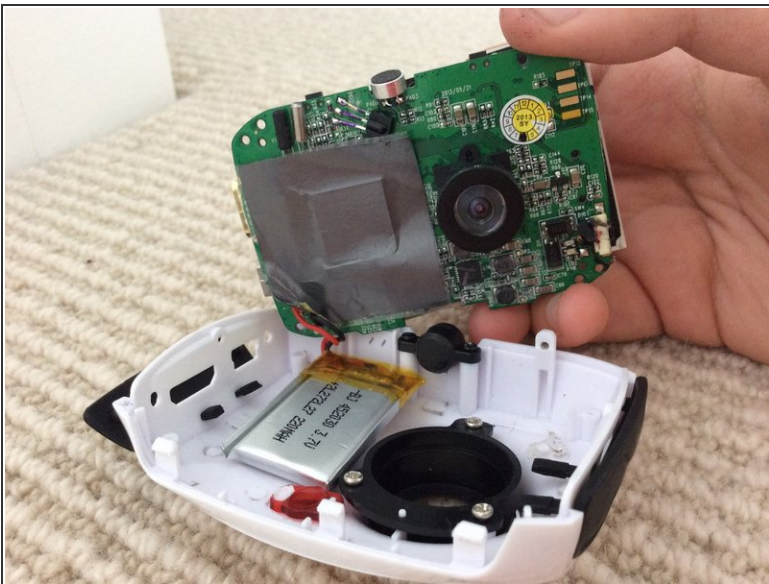
- Once you've done that, take off that and you will see the motherboard.

Step 5 — Behind the Motherboard



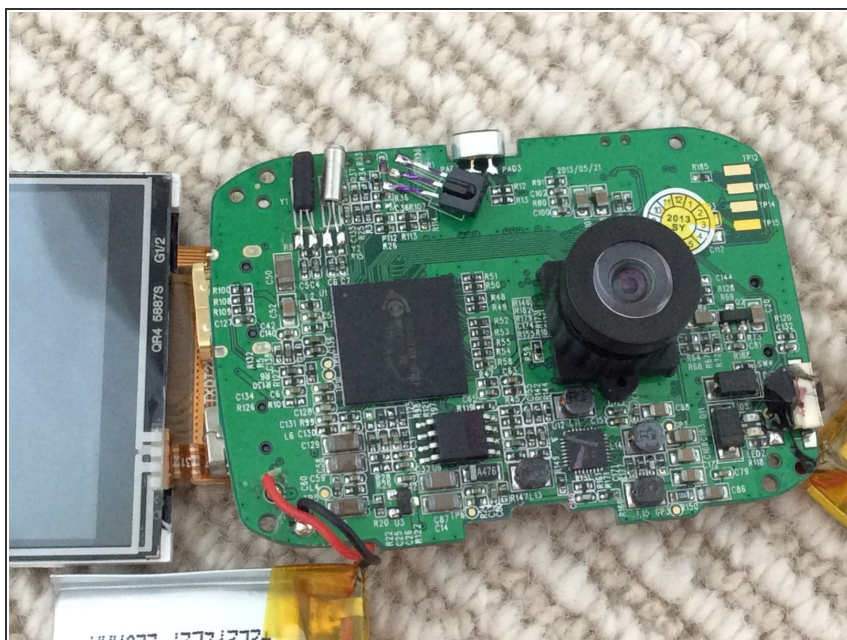
- Take that black sticker off and we can now see the entire motherboard.

Step 6 — Taking off the motherboard



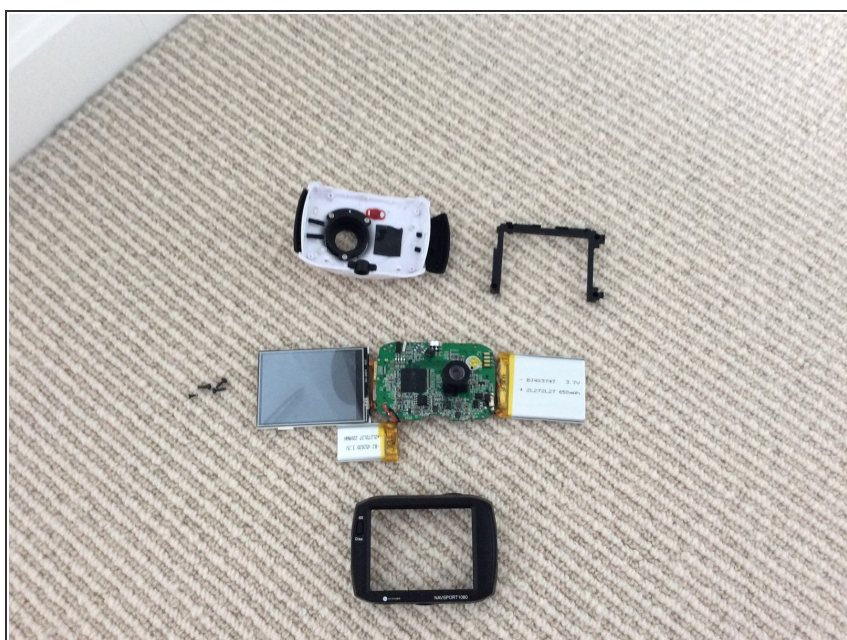
- Now we can take off the motherboard, revealing the front of the motherboard.
- There seems to be a second battery on the front of the motherboard, I do not know what it does nor is used for.

Step 7 — Front of the Motherboard



- Here is the front of the Motherboard.

Step 8 — Done



- ...and that sums up our teardown!