

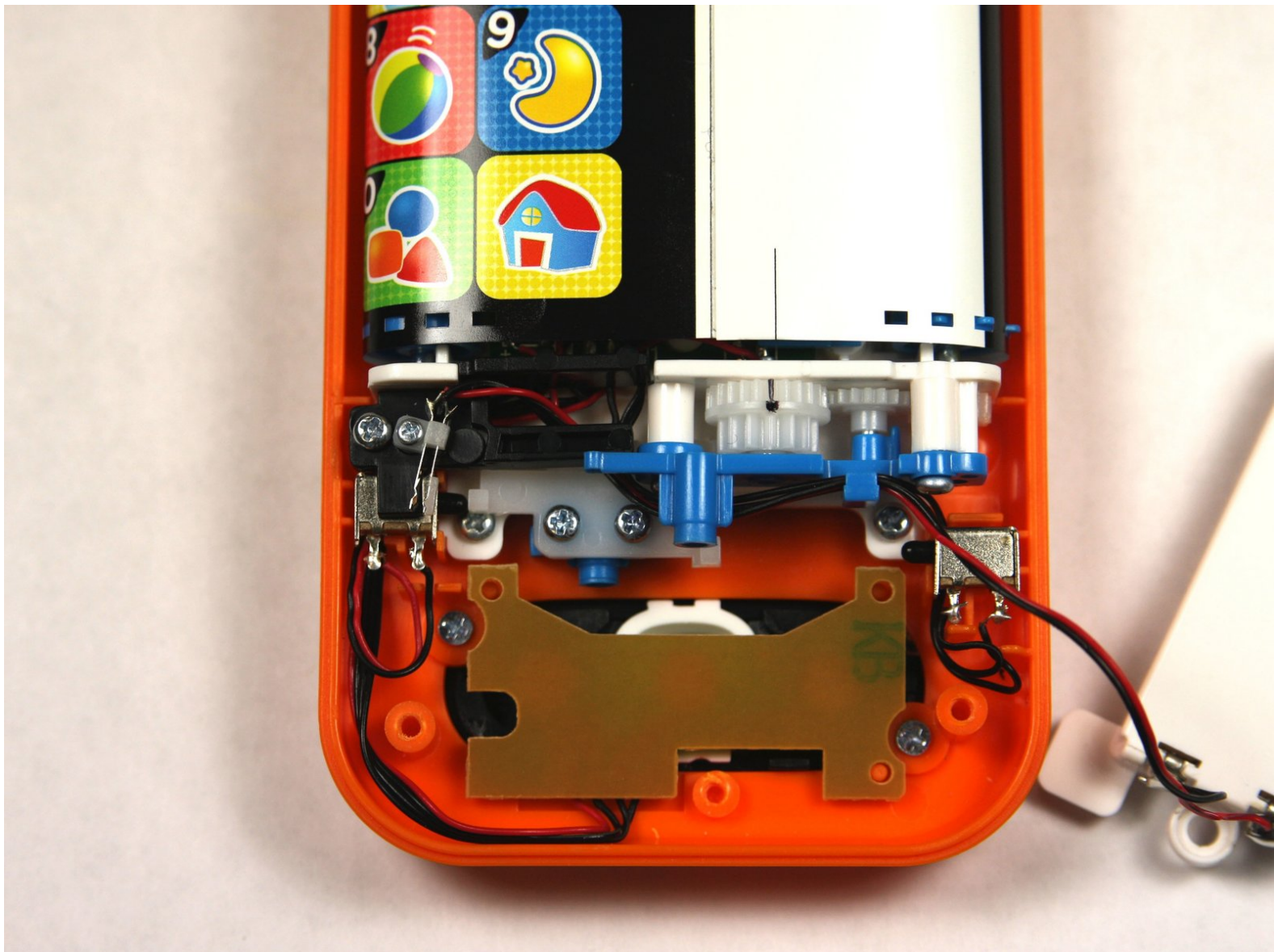


Repairing VTech Touch and Swipe Baby Phone

Screen Alignment

How to realign the screen of a VTech Touch and Swipe Baby Phone

Written By: Sean Webb



INTRODUCTION

This guide required



TOOLS:

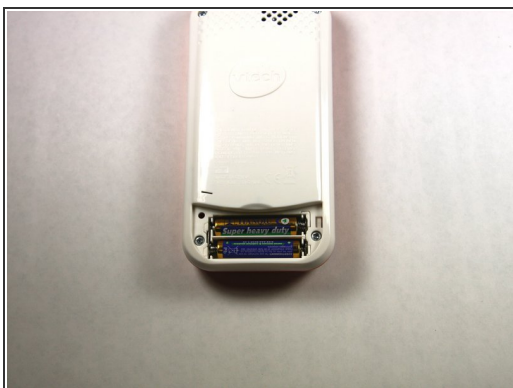
- [Phillips #1 Screwdriver](#) (1)
 - [Phillips #0 Screwdriver](#) (1)
-

Step 1 — Battery



- Using a Phillips #1 screwdriver, remove the 4.8mm screw on the battery cover by twisting the screwdriver counter-clockwise.

Step 2



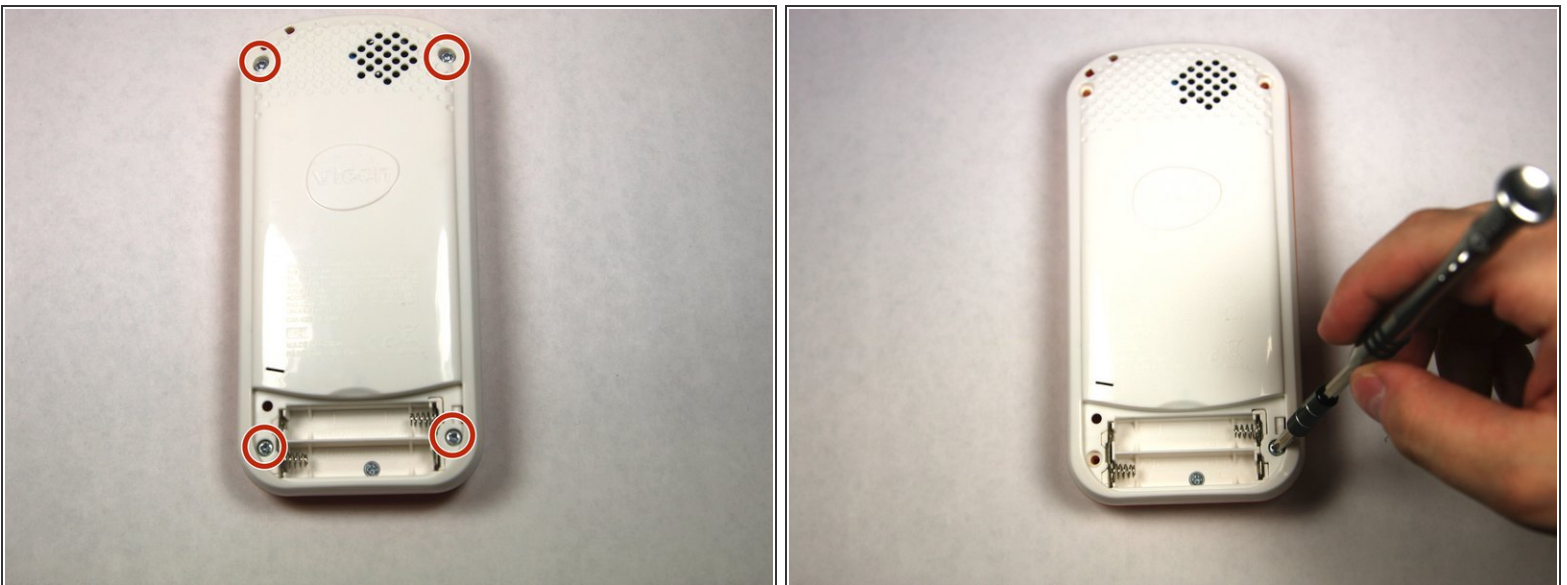
- Remove the two AAA batteries by pulling on one end of the battery and lifting it straight out.

Step 3



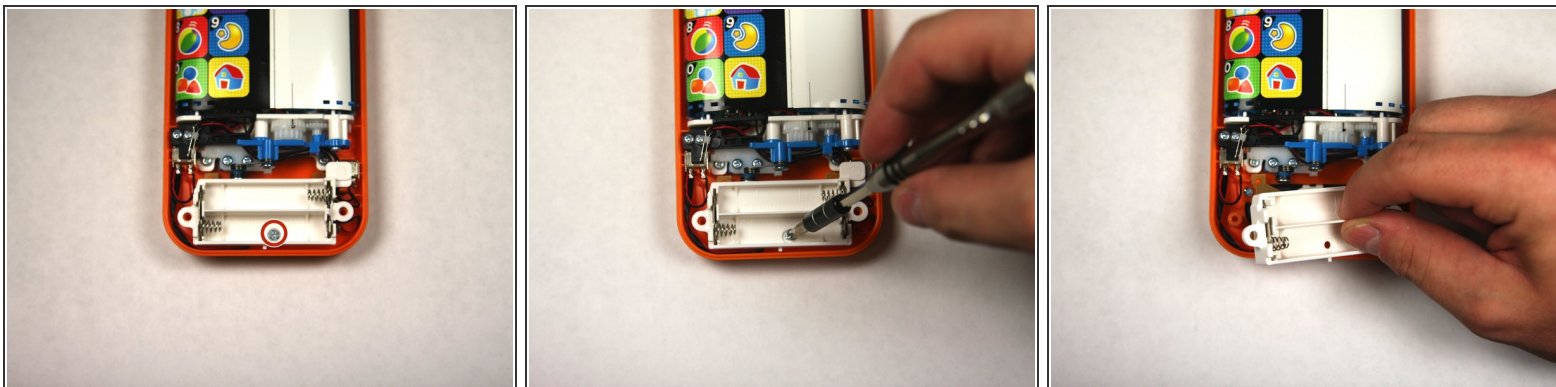
- ✦ When reassembling, align the notch on the battery panel with the slot on the phone.

Step 4 — Repairing VTech Touch and Swipe Baby Phone Screen Alignment



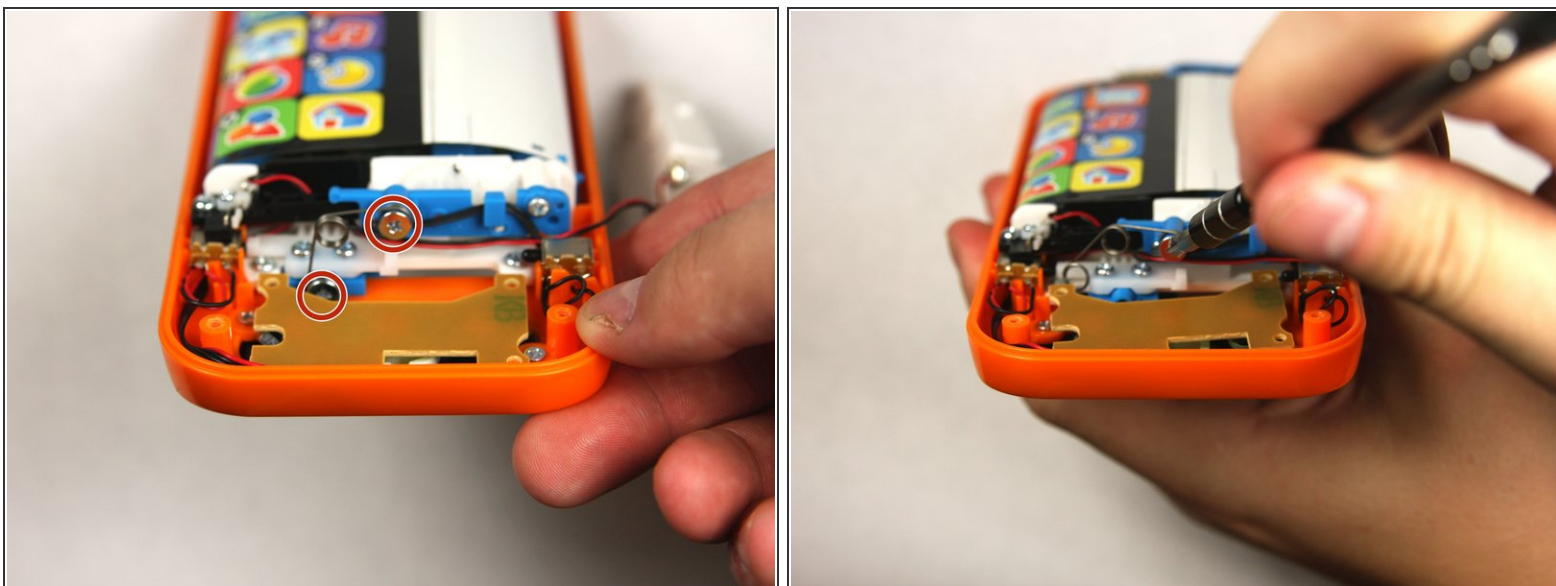
- Remove four 13.8mm screws from the back of the device using a Phillips #1 screwdriver.

Step 5



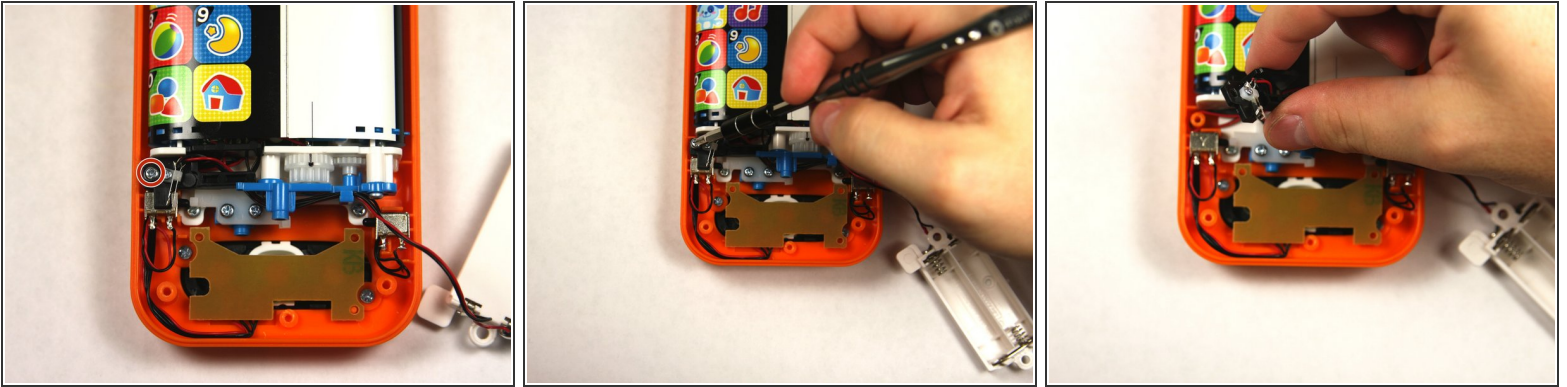
- Remove a single 4.8 mm screw with a Phillips #0 screwdriver and lift away the battery pack being careful of the wires.

Step 6



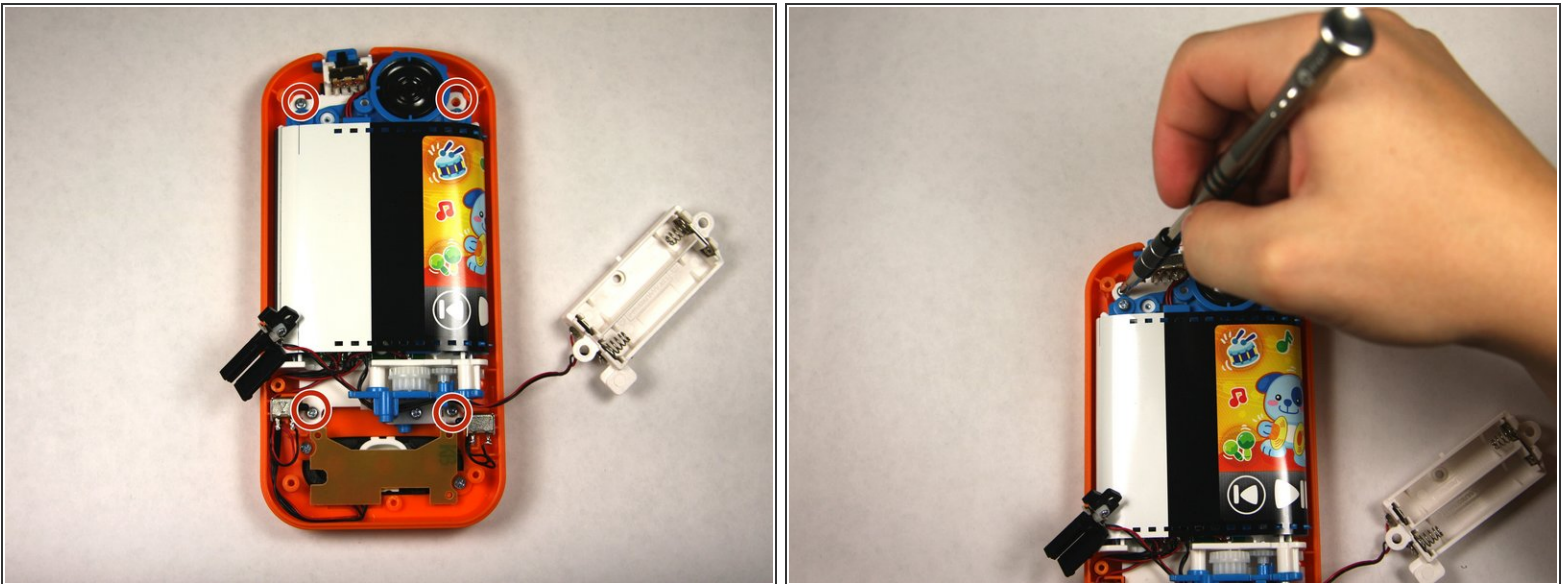
- Remove two 7.2 mm screws with a Phillips #0 screwdriver.
- Slide off the spring.

Step 7



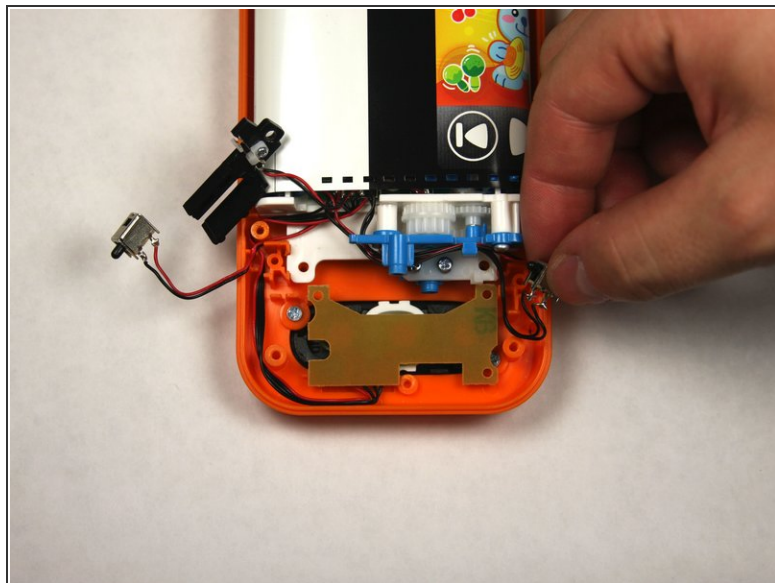
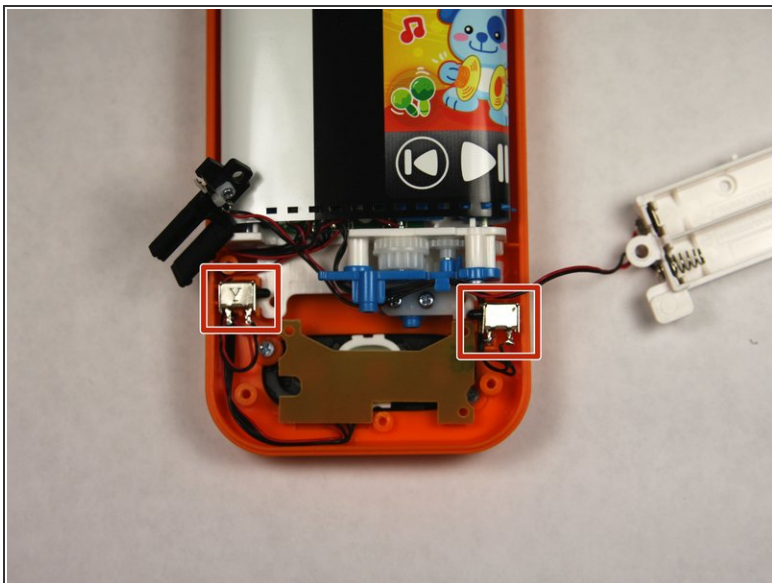
- Remove the single 7.5mm screw with a Phillips #0 screwdriver.
- Lift up the black plastic piece.

Step 8



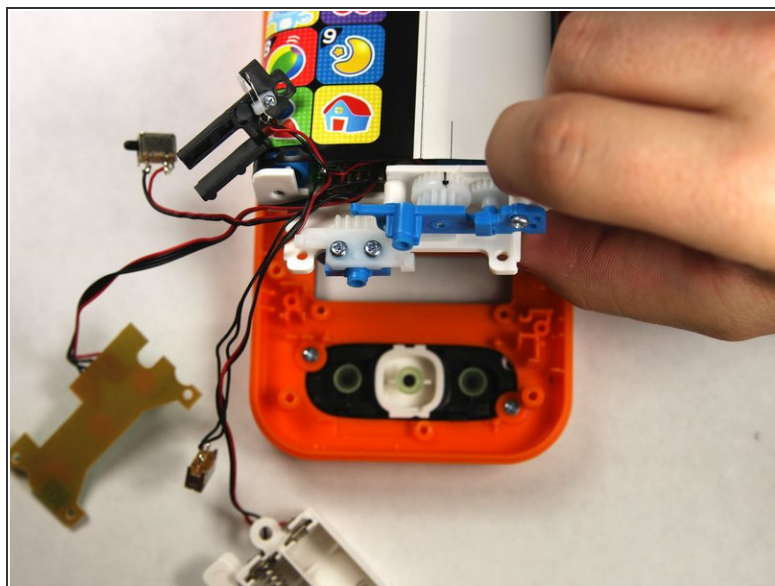
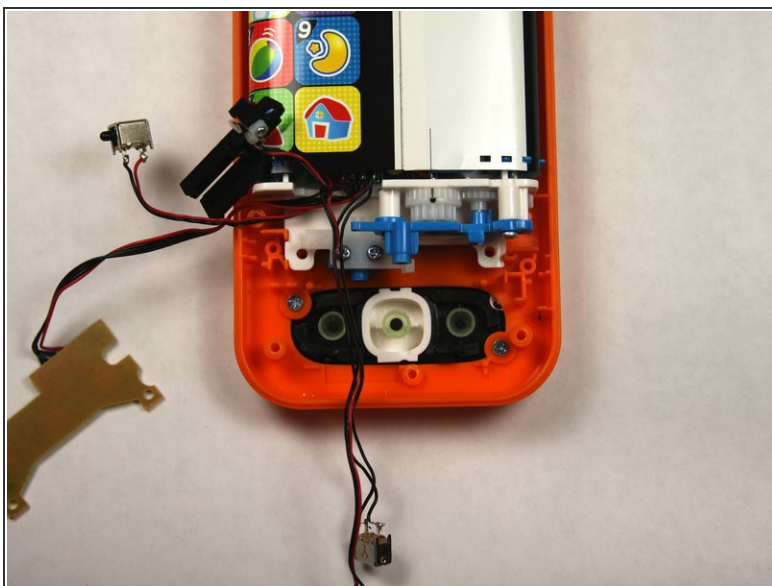
- Remove four 7.5mm screws with a Phillips #0 screwdriver.

Step 9



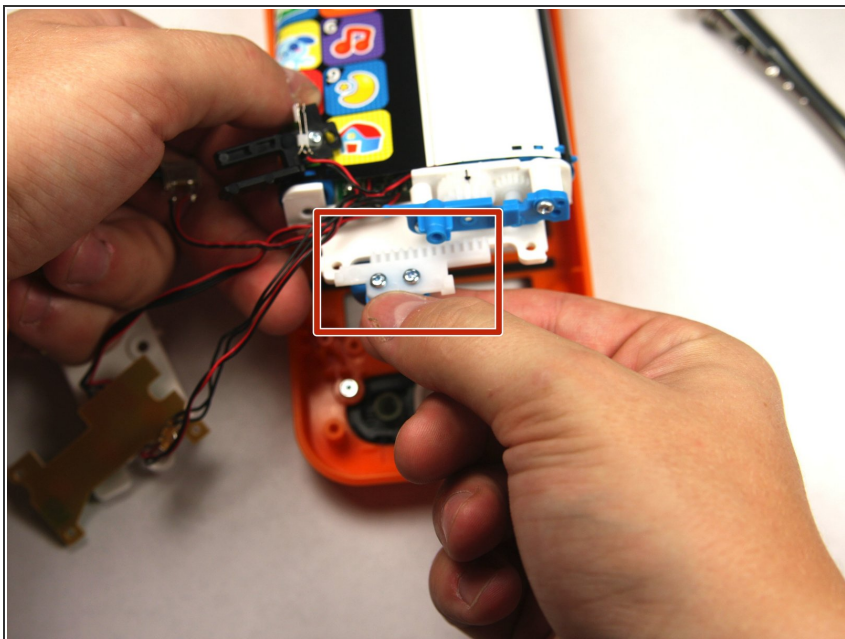
- Remove the two buttons, noting how wires are placed for reassembly.

Step 10



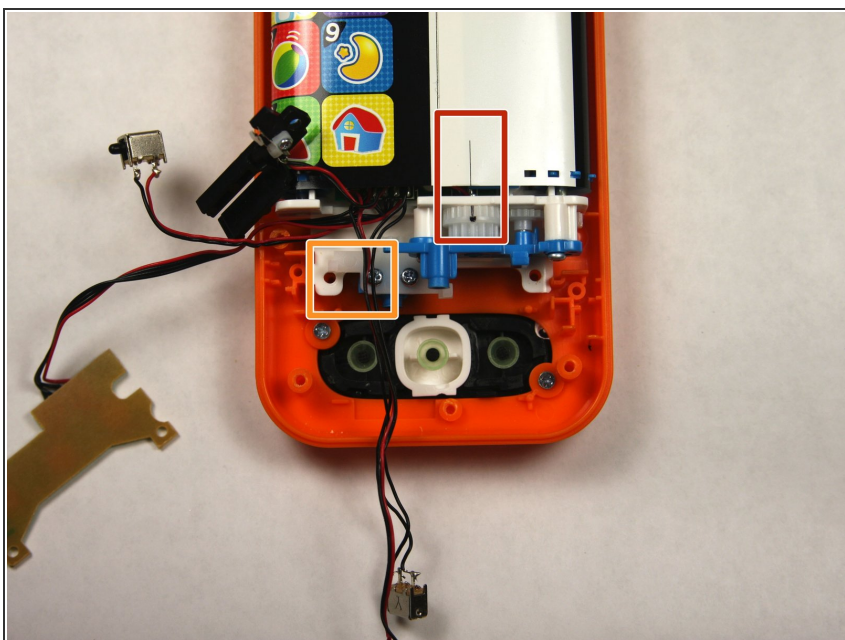
- Lift the button board up and away to clear room for lifting the motherboard.
- Tilt the assembly up but being wary that it is still attached to the front panel.

Step 11



- Slide the toothed slider towards you to remove.

Step 12



- To reassemble, align the two black lines together by moving the belt back and forth.
- Once aligned reinsert the toothed slider at the exact point shown.

To reassemble your device, follow these instructions in reverse order, skipping step 10 as the toothed slider has already been put in for proper alignment.

