



Lenovo Yoga 3 Pro SSD Replacement

Accessing and replacing the Solid State Drive...

Written By: Federico LopezCasildo Jr



INTRODUCTION

Accessing and replacing the Solid State Drive (SSD) is useful if it has been damaged or if you wish to swap it out with another one for extra storage space. Exercise extreme caution while removing and handling the drive. Although the drive is fairly sturdy, even a small dent can permanently damage it.

Note: The Yoga 3 Pro requires a M.2 SATA drive. NVMe SSDs will not work for the device.



TOOLS:

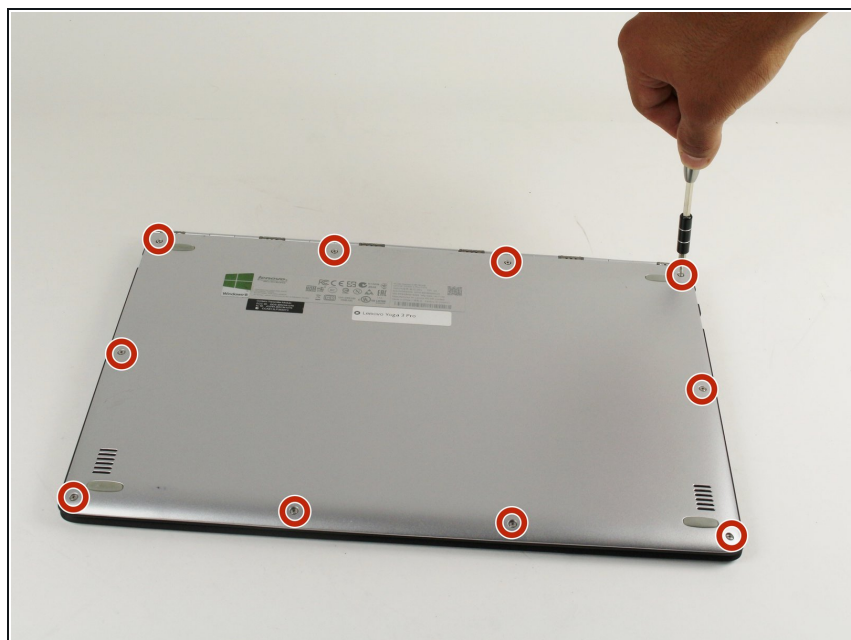
T5 Torx Screwdriver (1)
Phillips #00 Screwdriver (1)
iFixit Opening Tool (1)



PARTS:

Crucial P3 NVMe PCIe M.2 2280SS SSD (1)
Crucial P3 Plus NVMe PCIe M.2 2280SS SSD (1)
Crucial P5 Plus PCIe M.2 2280SS SSD (1)

Step 1 — Battery



⚠ Before opening your laptop, make sure it is powered off.

- Remove the ten 3.3 mm screws from the base cover using a T5 Torx screwdriver.

Step 2



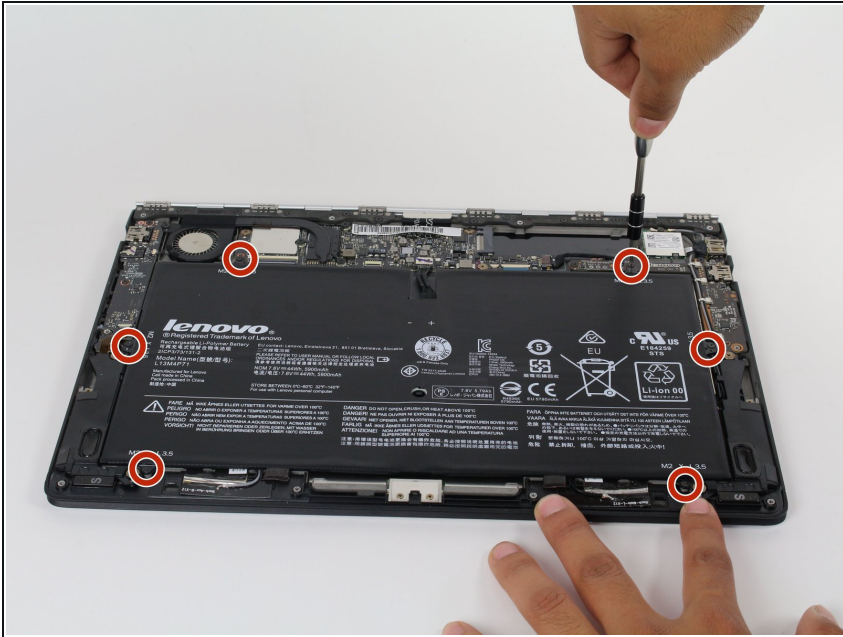
- Slide the plastic opening tool between the base cover and the frame to pry open the computer.
- Slowly go around the entire perimeter of the computer until all edges are loose.
- ⓘ Make sure the plastic opening tool doesn't go too far into the device.

Step 3



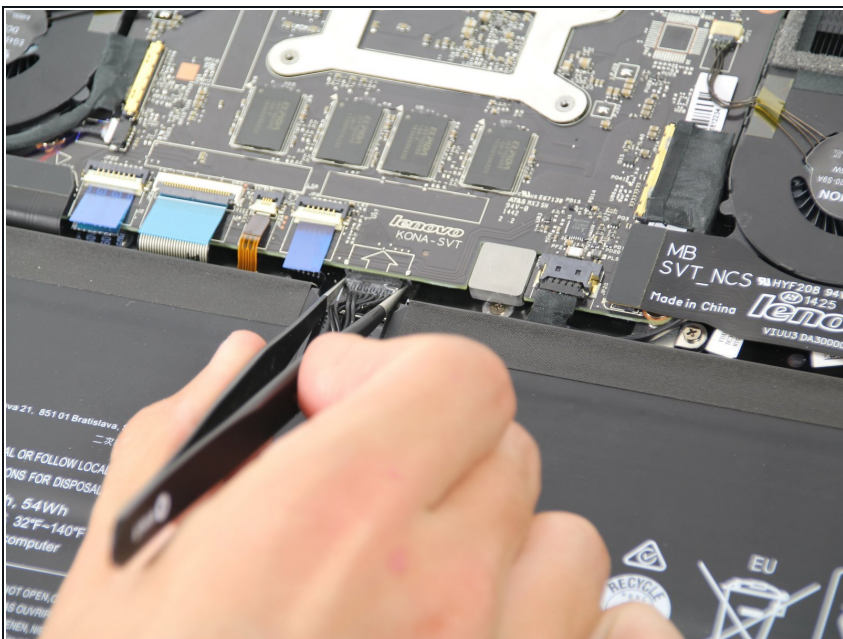
- Remove the panel and place it in a safe location.

Step 4



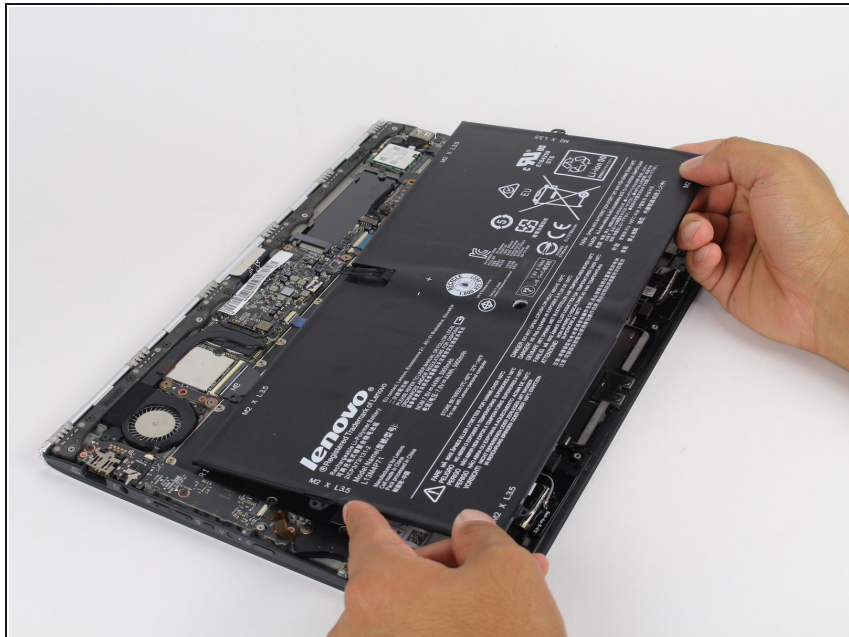
- Remove the six 3.5 mm screws surrounding the battery using a Phillips 00 screwdriver.

Step 5



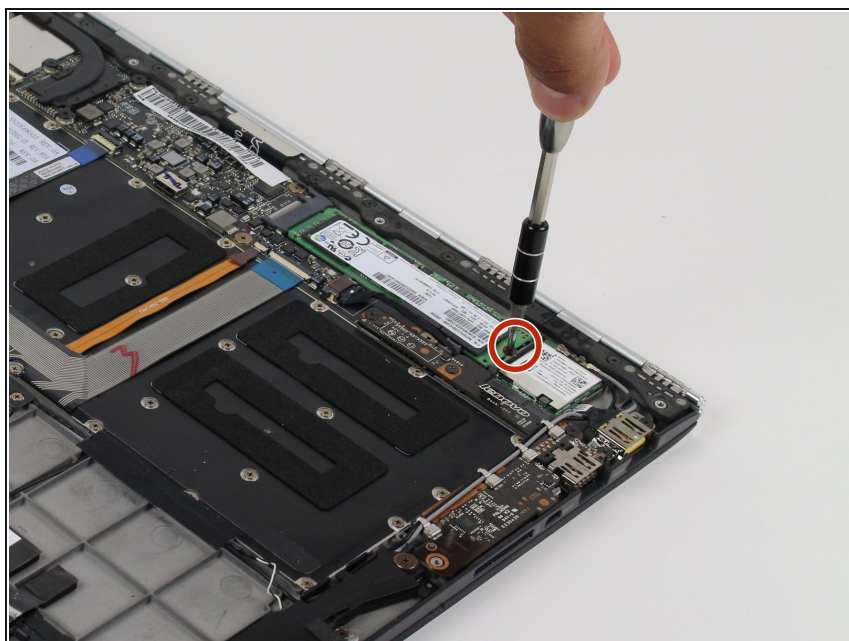
- Using either tweezers or your fingers, disconnect the black battery cable by pinching either side of the connector and pulling towards the battery.

Step 6



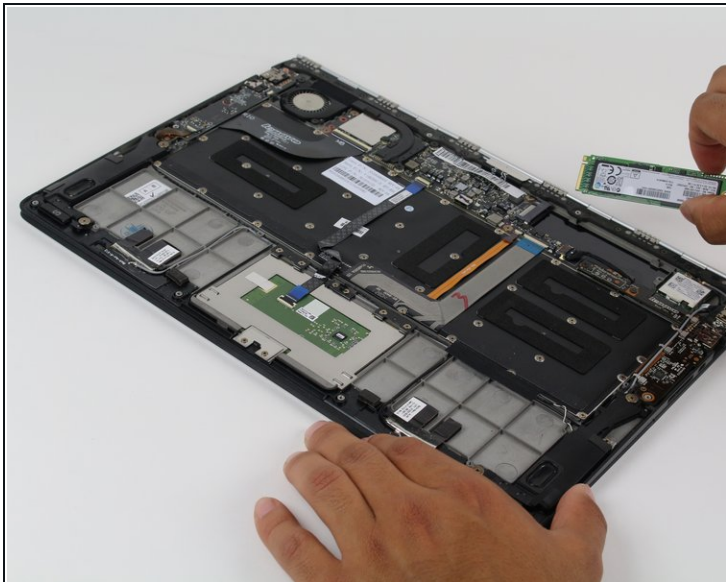
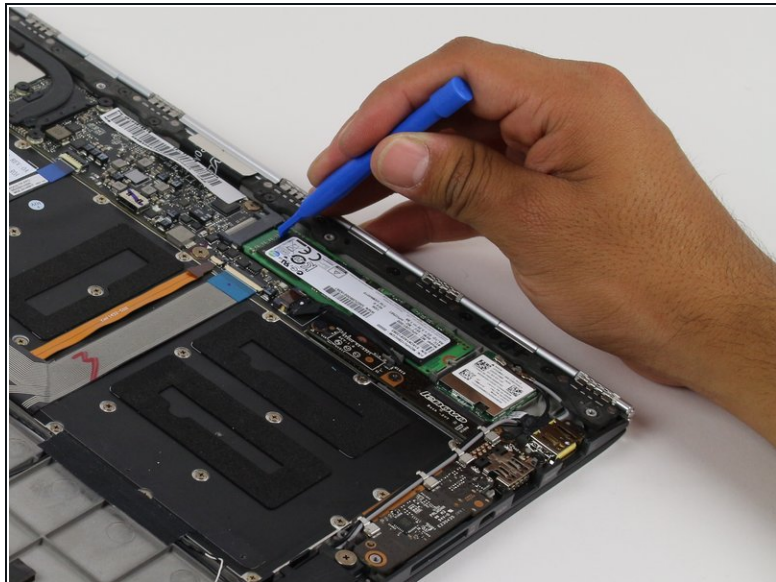
- Carefully lift and remove the battery.

Step 7 — SSD



- Remove the 1.5 mm screw using the Philips 00 screwdriver.

Step 8



- Use the plastic opening tool to remove the hard drive/SSD.

To reassemble your device, follow these instructions in reverse order.