



Repairing Canon PowerShot SD1100 IS Dead Camera - Will Not Turn On

I found the problem to be a loose screw from the front circuit board. An easy repair.

Written By: Frank



INTRODUCTION

Camera went completely dead - removed the front cover and found a screw loose. Replaced it and the camera worked fine. This could be a problem for others.

TOOLS:

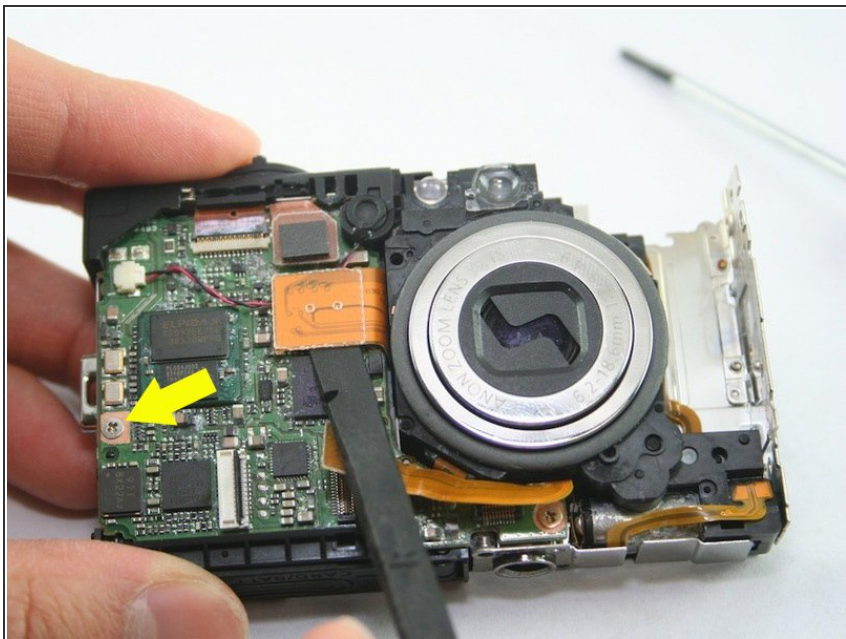
- [Phillips #00 Screwdriver](#) (1)
-

Step 1 — Repairing Canon PowerShot SD1100 IS Dead Camera - Will Not Turn On



- Follow guide “Disassembling Canon PowerShot SD1100 IS Front and Rear Cover”

Step 2



- Check inside camera for loose screw from this location (indicated by yellow arrow). Return the screw to location and firmly tighten it. Reposition and tighten the covers. Problem solved!

To reassemble your device, follow these instructions in reverse order.