



Samsung Epix Battery Replacement

Follow this guide to remove the battery of your...

Written By: Theodore Arehart



INTRODUCTION

Follow this guide to remove the battery of your Samsung Epix phone.

TOOLS:

[iFixit Opening Tool](#) (1)

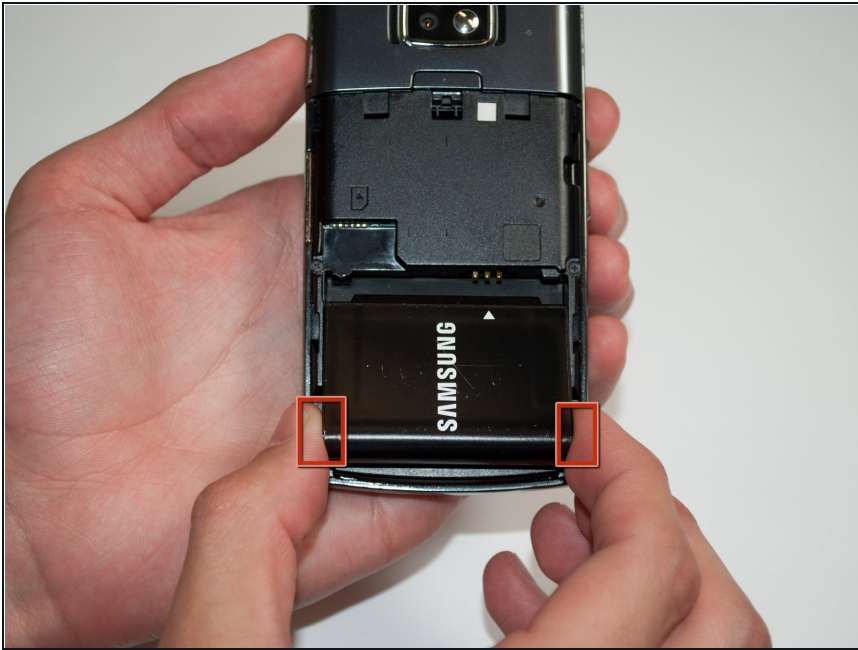
[Spudger](#) (1)

Step 1 — Battery



- Press button on back of phone below camera.
- While button is depressed, remove the back panel of the phone by it sliding off (not shown in picture).

Step 2



- Grasp the bottom corners of the battery with two fingers and gently lift.

To reassemble your device, follow these instructions in reverse order.