



Logitech UE Boom USB Port Replacement

Written By: Sean Reilly





TOOLS:

[Mako Driver Kit - 64 Precision Bits](#) (1)

[Metal Spudger](#) (1)

[iFixit Opening Tool](#) (1)

[Soldering Iron 60w Hakko 503F](#) (1)

Step 1 — D-ring



- Turn the device over. The D-ring will be on the left face of the speaker when viewing the device from this orientation.

Step 2



- Lift the handle on the D-ring and unscrew it.
- Remove the D-ring.

Step 3 — Bluetooth Adapter



⚠ Any repairs made from this point forward will void your device's warranty.

- Holding the speaker upright, wedge the metal spudger in between the casing and the speaker. Gently pry open the tabs as they are easily broken.

Step 4



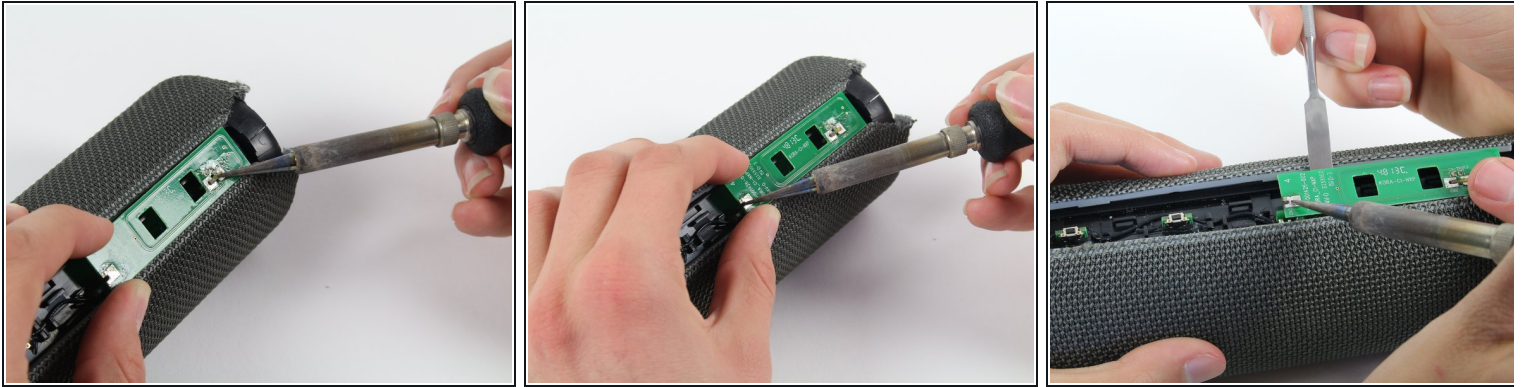
- Find the part of the casing that covers the volume controls. Wedge the metal spudger under this and pry open all of the tabs as in the previous step.
- Repeat for the bottom of the speaker and pry the casing open with your fingers.

Step 5



- Using the Phillips J0 head screwdriver, unscrew the four silver 9 mm screws.
- Do the same for the two black 7 mm screws.

Step 6



⚠ This next step involves the use of a hot soldering iron. Remember to be careful during this step since it can be easy to burn yourself.

- Using a soldering iron, de-solder the two ends of the switch plate.

Step 7



- With the switch plate disconnected, remove it and your device should now look like this.

Step 8 — Lithium Battery



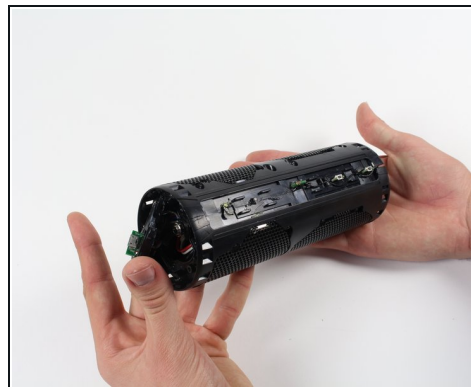
- With a metal spudger, pry open the tabs on the speaker sleeve along the length of the speaker.

Step 9



- Use a plastic opening tool to pry the sleeve off from the bottom of the speaker.

Step 10



- Peel off the sleeve.

Step 11



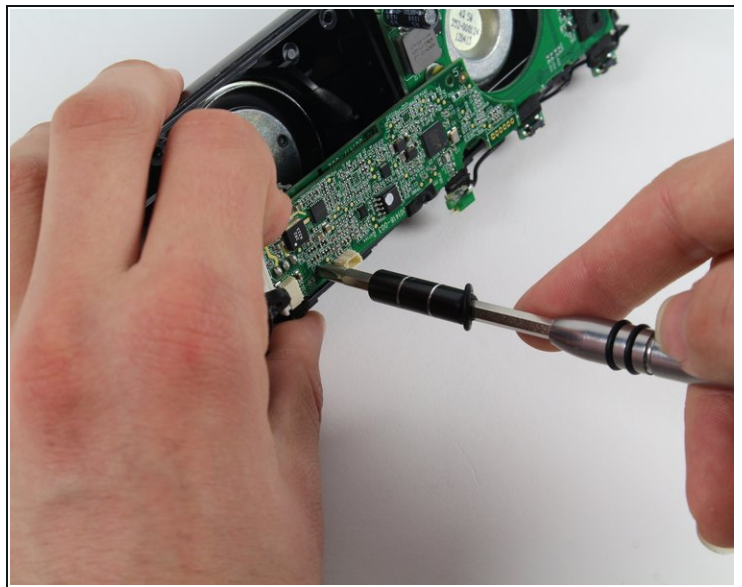
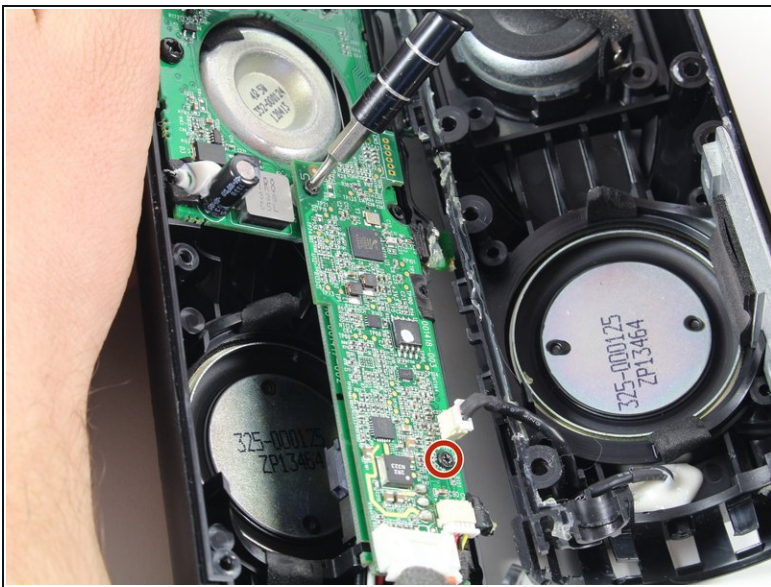
- Use a Phillips 1 screwdriver to unscrew the eight black 14 mm screws along the length of the casing.

Step 12



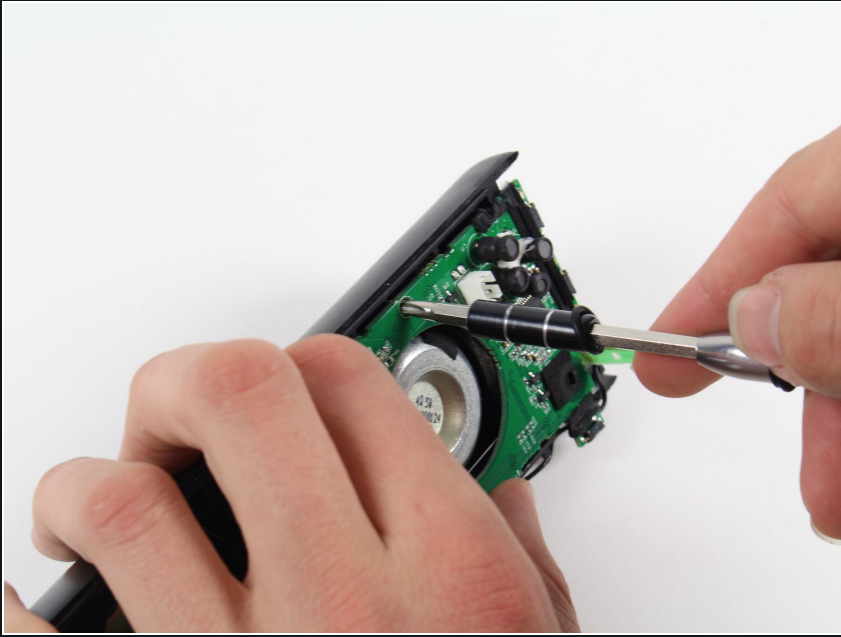
- With the screws removed, pry open the casing to be able to get to the components inside.
- ⓘ Try prying the case open from one of the ends if that is easier.

Step 13



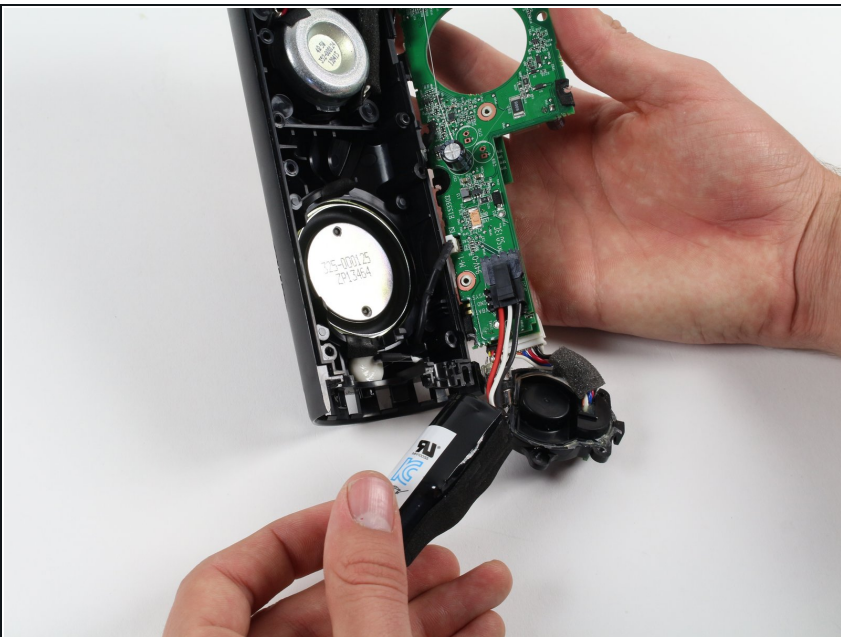
- With a Phillips #00 screwdriver, unscrew two 5.6 mm screws from the rectangular shaped circuit board.

Step 14



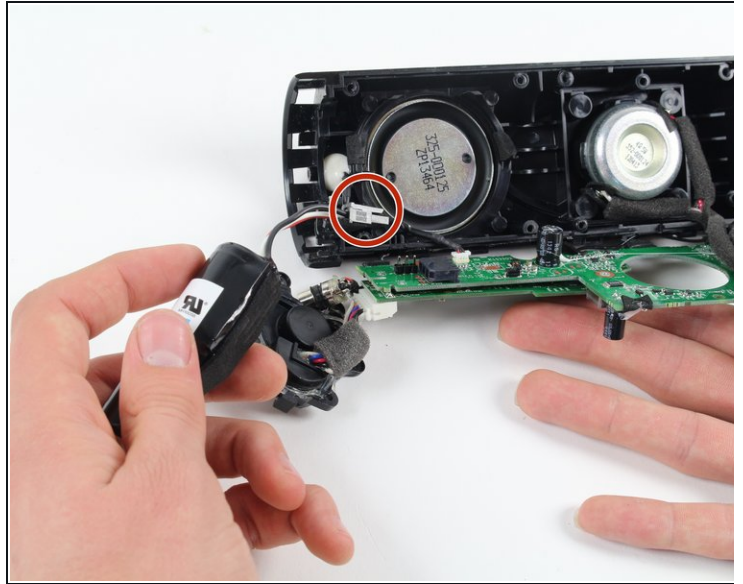
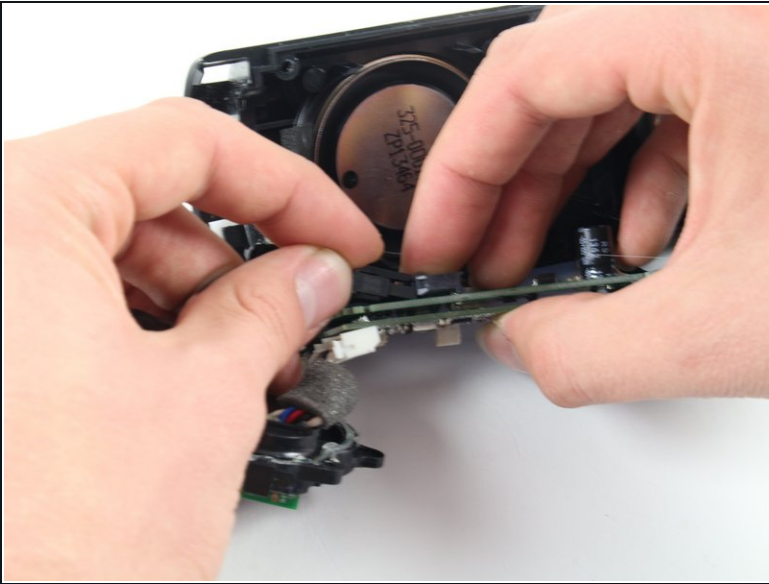
- With the Phillips #2 screwdriver, unscrew the 9.9 mm screw from the larger circuit board surrounding the speaker.

Step 15



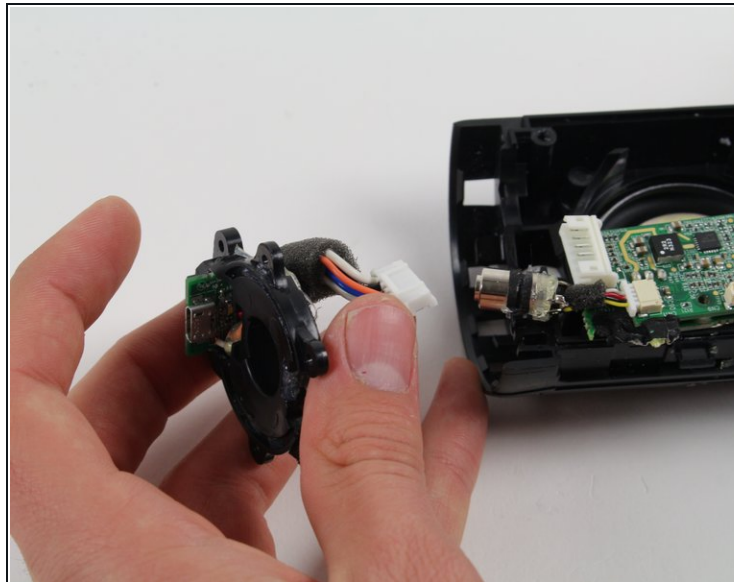
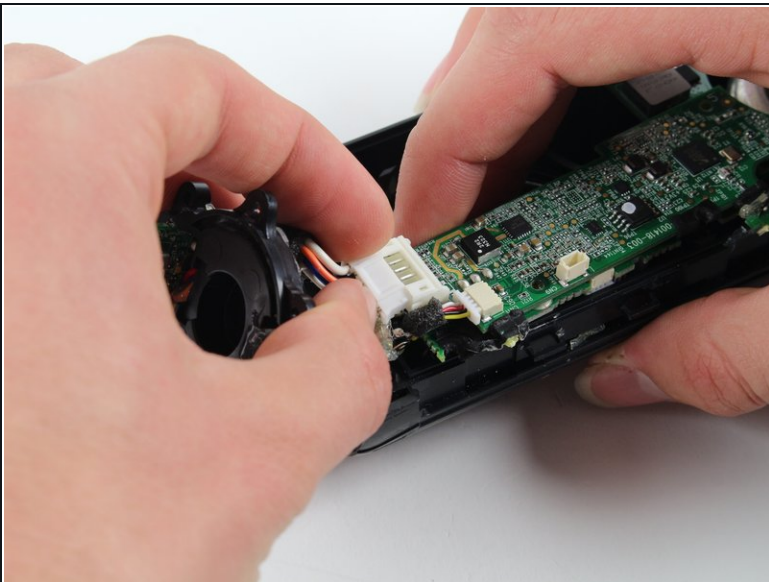
- Once all of the screws are gone, you should be able to remove the circuit boards and find the battery.

Step 16



- Remove the battery by pulling it from the terminal as marked in the picture.

Step 17 — USB Port



- Finally, after opening the speaker, locate the USB plate on the left face of the speaker and remove it from the motherboard.

To reassemble your device, follow these instructions in reverse order.

