



Dell Inspiron 600m LCD Replacement

This guide will walk you through how to replace...

Written By: Alex Klimaj



INTRODUCTION

This guide will walk you through how to replace the LCD screen on your Dell Inspiron 600m. You will need a Philips #00 screwdriver, an anti-static wrist strap, and a wedge type tool such as a flat-head screwdriver or the iFixit Opening Tool to complete this guide.

TOOLS:

- [Anti-Static Wrist Strap](#) (1)
 - [iFixit Opening Tool](#) (1)
 - [Phillips #00 Screwdriver](#) (1)
 - [Spudger](#) (1)
-

Step 1 — Battery



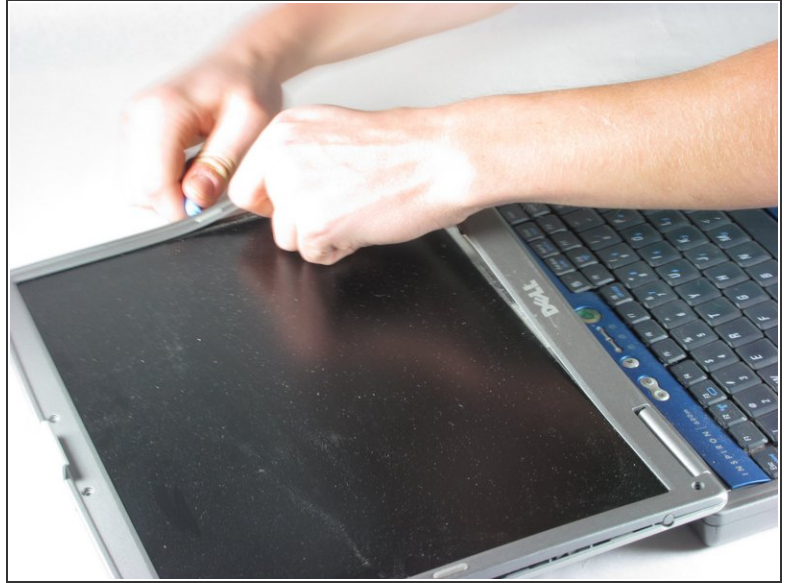
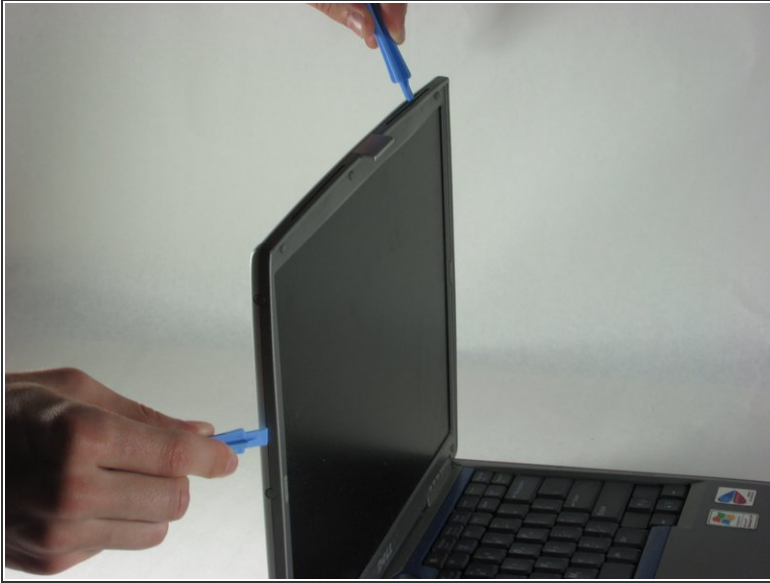
- Flip laptop upside down and locate the battery as shown in the images.
- Push in the tab on the battery and lift up. The battery should detach very easily.

Step 2 — LCD



- Using fingernails or a spudger, push any direction on the rubber dots to remove them from the plastic cover.
- Underneath each rubber dot will be a screw. Remove these screws with the Phillips #00 screwdriver.

Step 3



- Use the IFixit Opening Tool to un-clip the plastic cover, detaching it from the rest of the screen.
- ⓘ There are clips about every inch around the right, left, and top of the plastic cover. Be sure that all of them are unclipped.

Step 4



- Pull straight up on the cover to lift the cover off of the rest of the screen.
- ⓘ The bottom part of the plastic is a little sticky.

Step 5



- Remove four screws (two on each side of the screen) with the Phillips #00 screwdriver.

ⓘ The middle screw does not need to be removed.

Step 6



- Gently lift the LCD panel off of the base.

⚠ The LCD is still attached to the computer. Do not pull too hard or you could break the cable.

Step 7



- Flip the LCD panel over.

⚠ Do not touch on or near the back of the panel where it says "Don't Touch." LCD panels contain mercury which is hazardous to humans.

- Remove the cable by squeezing each side of the connector and gently pulling straight out.

Step 8



- Remove the cable at the base of the laptop by pulling up on the yellow tab attached to the cable.

To reassemble your device, follow these instructions in reverse order.