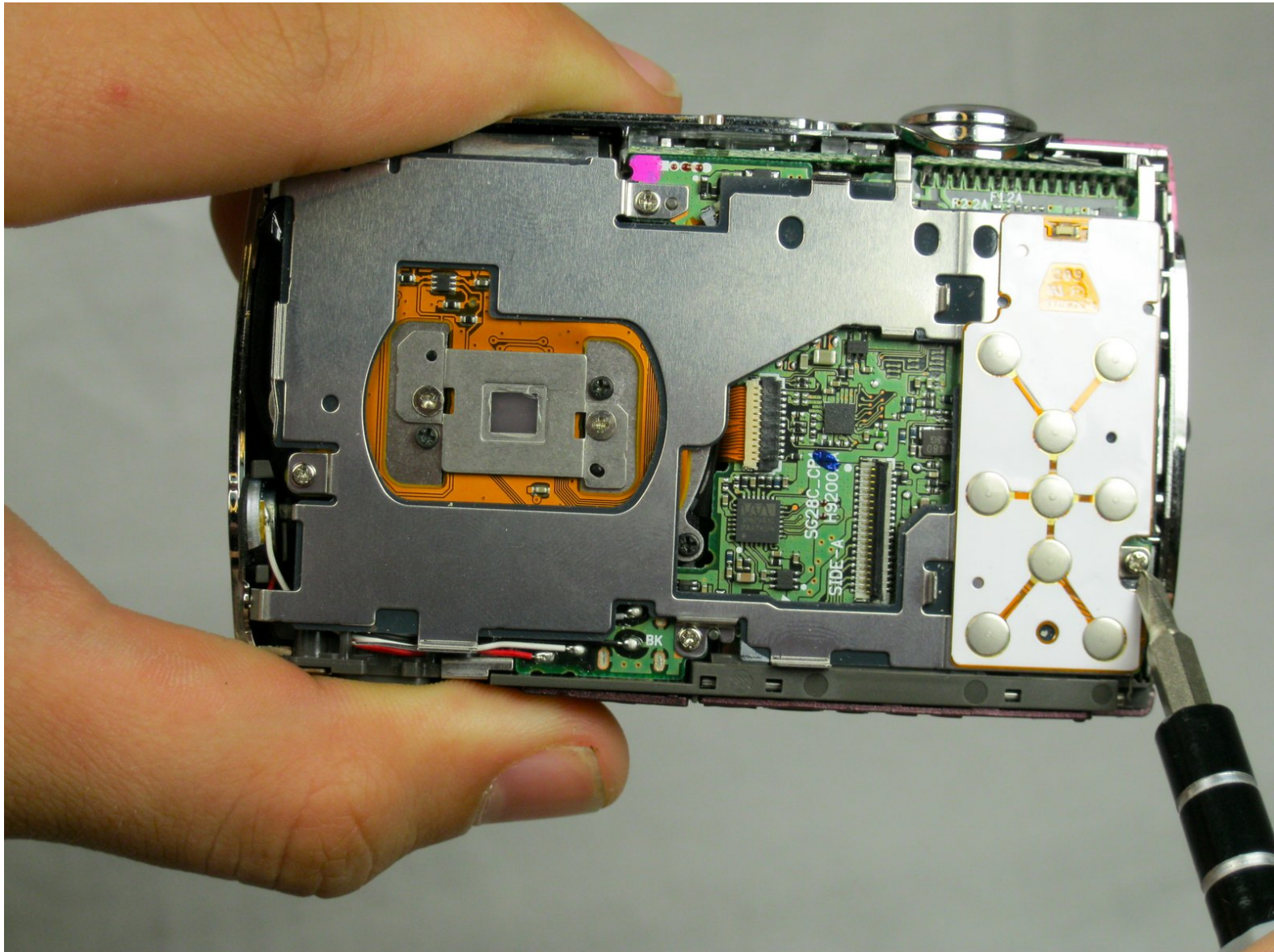




# Nikon Coolpix S220 Accessing the Motherboard

This guide will teach the reader how to access the motherboard.

Written By: Shauna



---

## INTRODUCTION

This guide will show how to access the motherboard which will give you the ability to remove the lens and flash.



### TOOLS:

- [Phillips #00 Screwdriver](#) (1)
  - [Tweezers](#) (1)
-

## Step 1 — Outer Cover



- Remove the two 2.8 mm screws on the left side of the camera.

## Step 2



- Remove the four 2.8 mm screws on the right side of the camera.

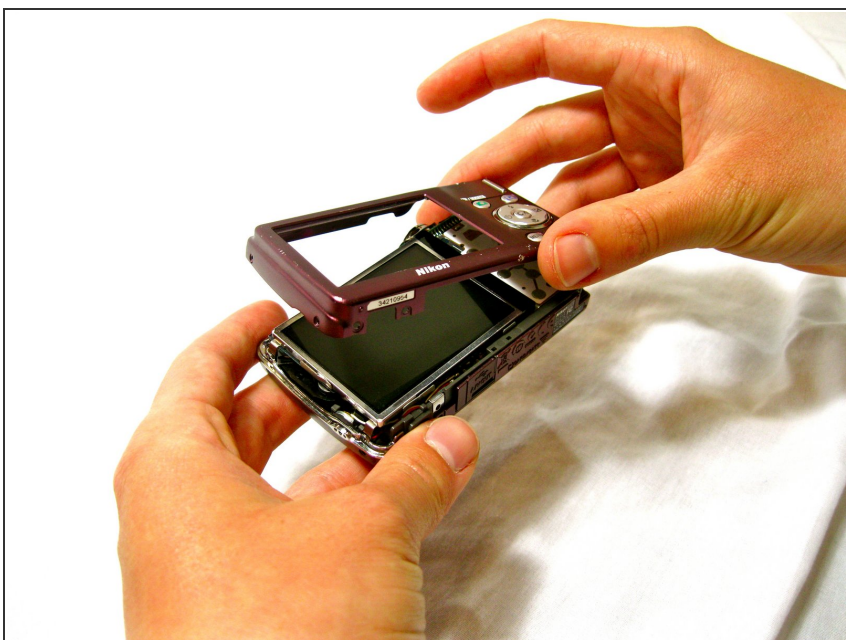


### Step 3



- Remove the three 4.1 mm screws on the bottom of the camera.

### Step 4



- Gently lift the rear cover from the camera.

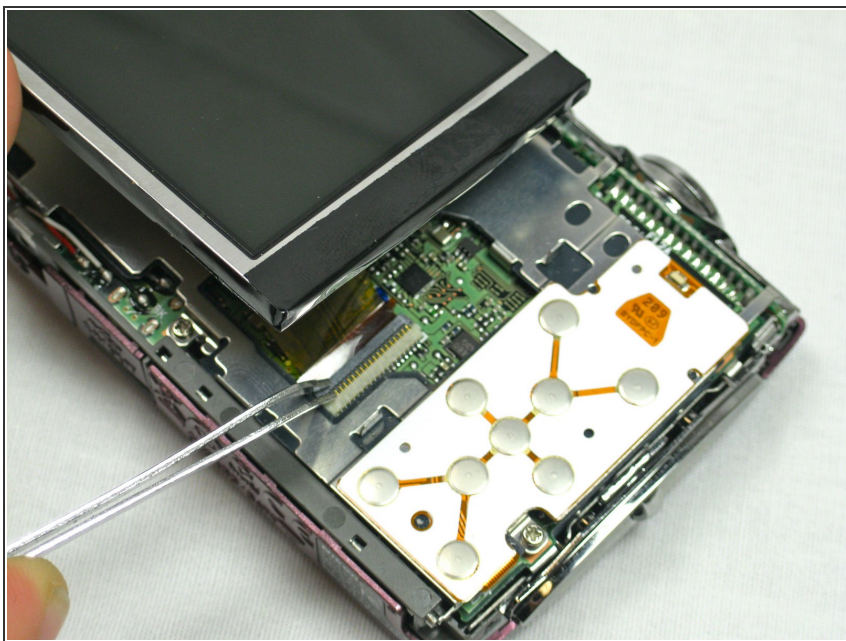
## Step 5 — LCD



- Gently lift the screen out of its place.

**i** You will need to hold the screen slightly above the camera because it will still be attached to the camera by an orange ribbon cable.

## Step 6



- Use the tweezers to lift the ZIF connector which is holding the ribbon cables that connect the LCD screen to the motherboard.

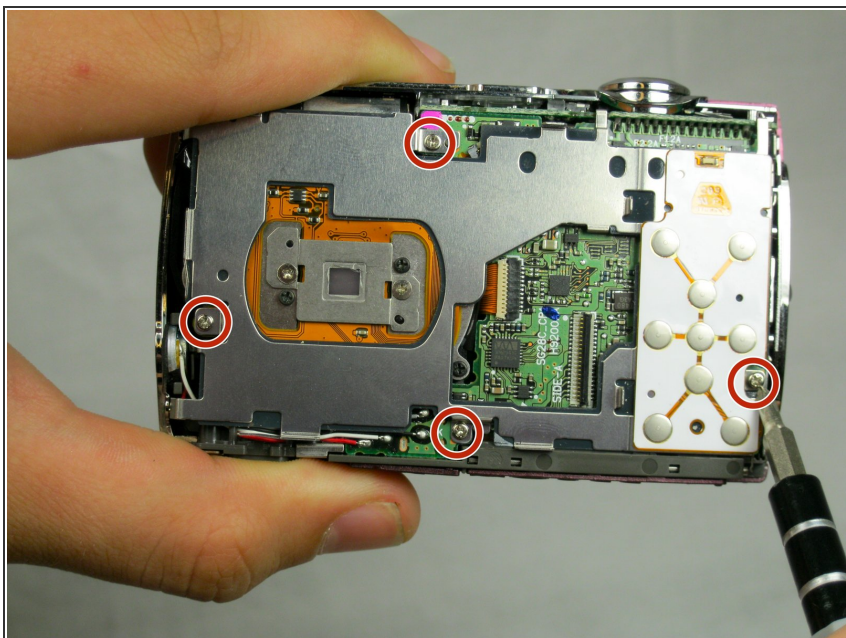


## Step 7



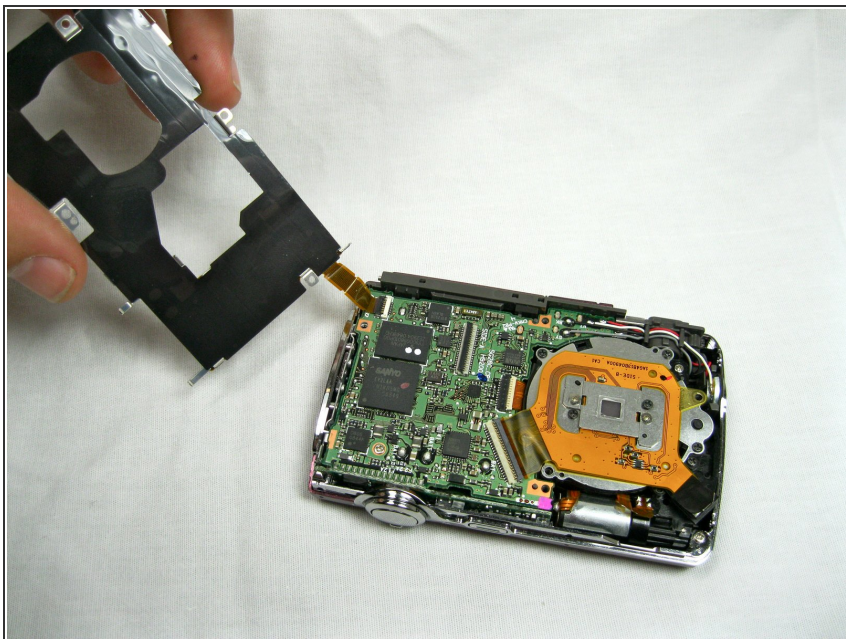
- Slowly pull the screen from the camera.

## Step 8 — Motherboard



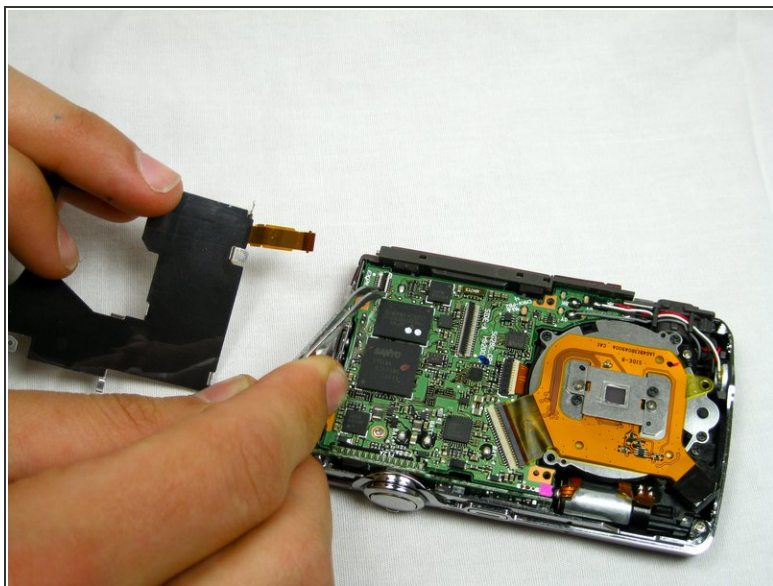
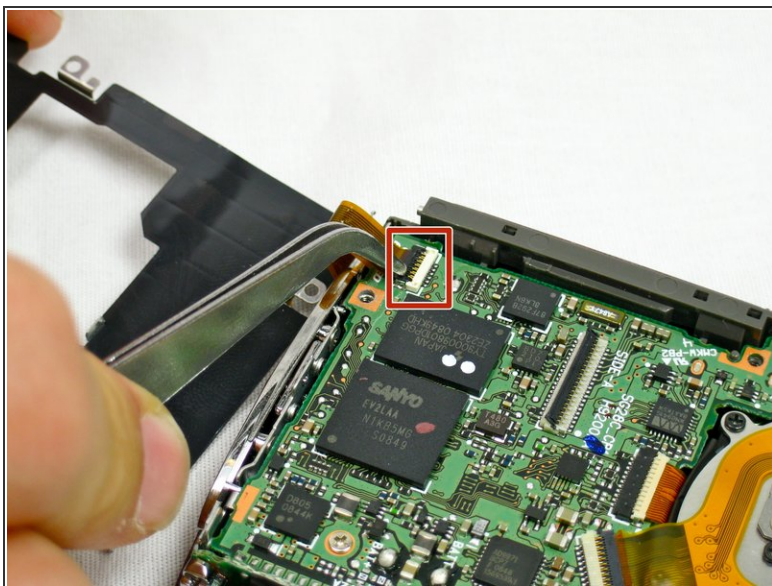
- Remove the four 3.8 mm screws located near the bottom right and top left of the LCD base plate.

## Step 9



- Lift up silver LCD base plate

## Step 10



- Using tweezers, lift up the retaining flap on the ZIF connector securing the button panel ribbon cable.
- Slide the button panel ribbon cable out of its socket on the motherboard.

To reassemble your device, follow these instructions in reverse order.