



# ASUS FonePad 7 Vetro/Touch Replacement

Written By: Andrew





## TOOLS:

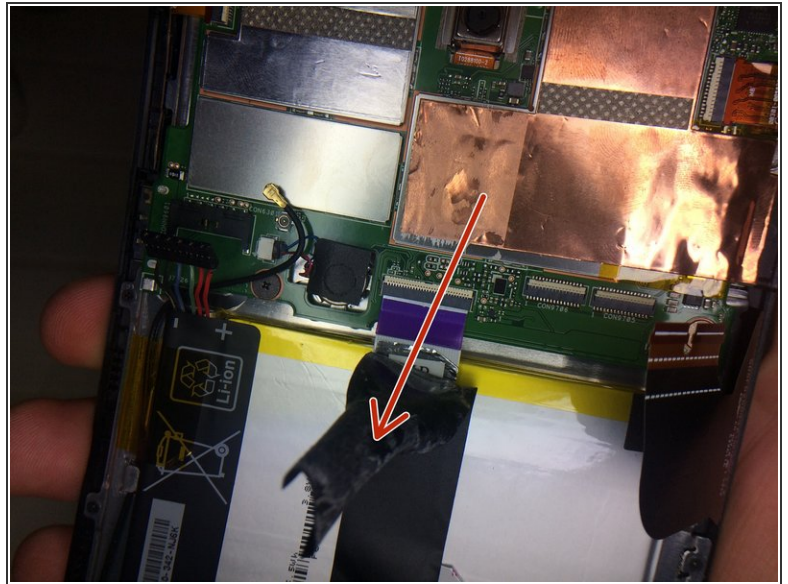
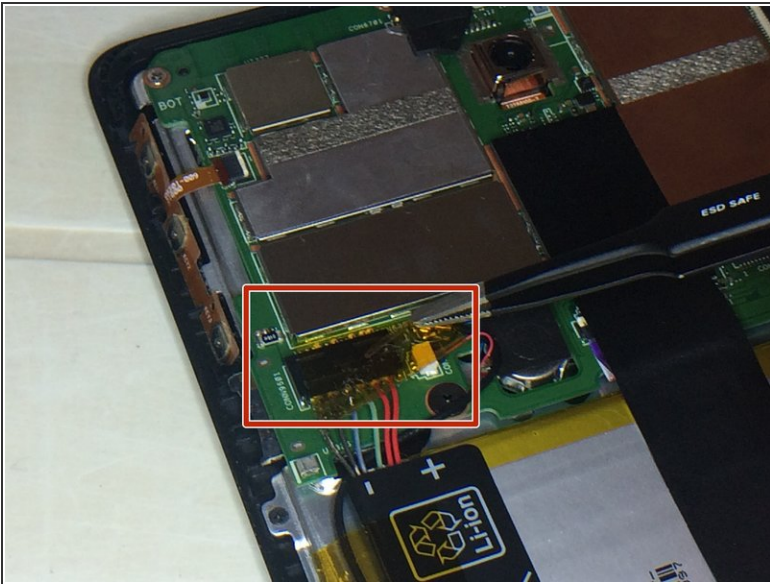
- [iFixit Opening Tools](#) (1)
- [iFixit Opening Picks set of 6](#) (1)
- [Spudger](#) (1)
- [Phillips #0 Screwdriver](#) (1)
- [Tweezers](#) (1)

## Step 1 — Rear Panel



- Make sure your device is turned off. Then with a plastic opening tool, carefully remove the back panel by carefully working your way around the perimeter.

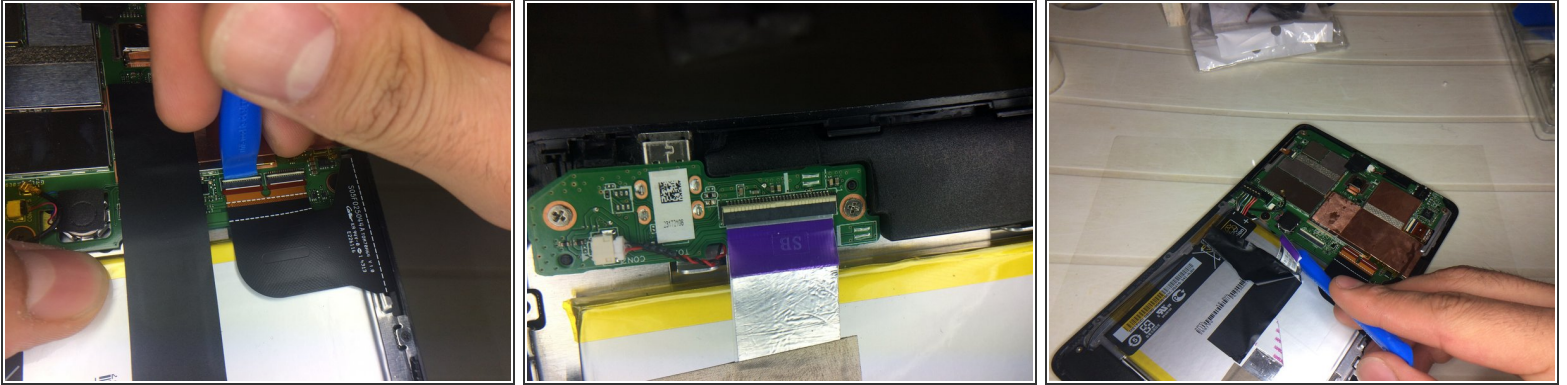
## Step 2 — Battery



- Remove adhesive strips.
- Disconnect the battery connectors by carefully pulling down on them using a spudger or plastic opening tool.



## Step 3 — Battery



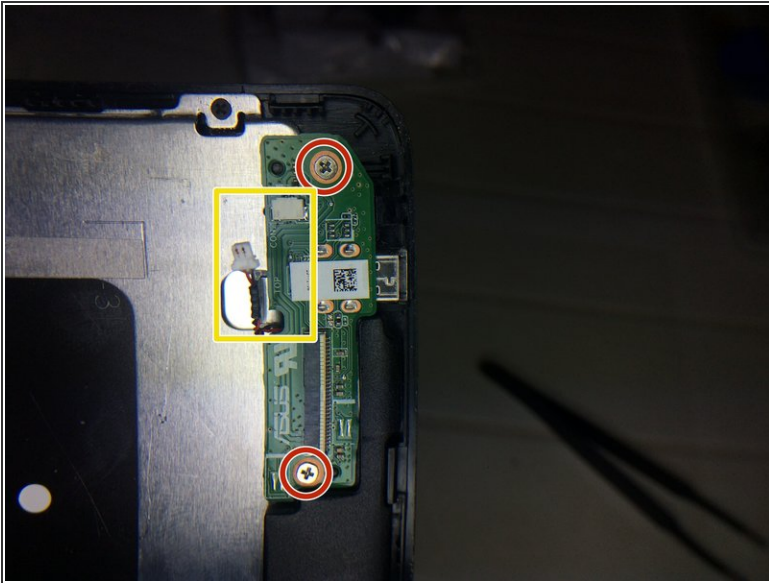
- Disconnect Touch Connectors using a spudger or plastic opener tool.
- Disconnect the ZIF connectors holding the battery.
  - ⓘ You can also use your hand to remove ZIF connectors.
  - ⚠ ZIF connectors are delicate so be careful when you are removing them.

## Step 4 — Remove Battery



- Using a plastic opening tool carefully pry the battery loose. The battery is glued to the pad; slight pressure will be needed to remove the battery.

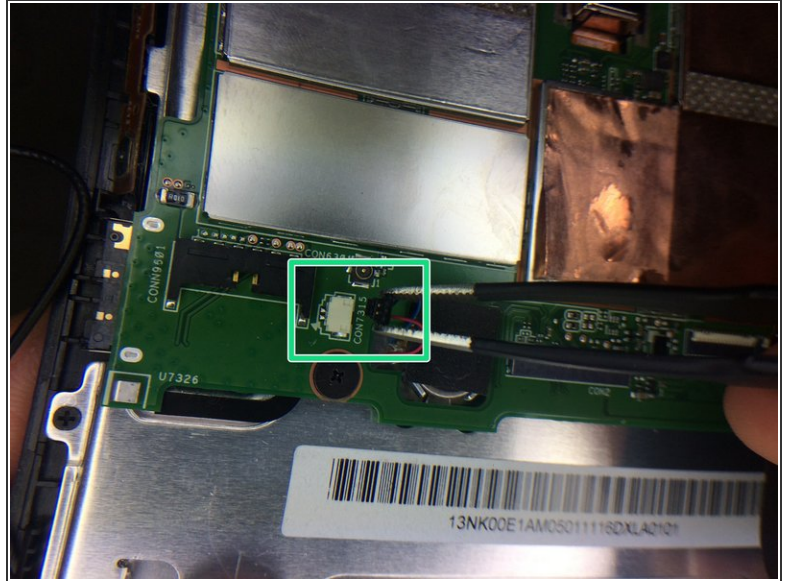
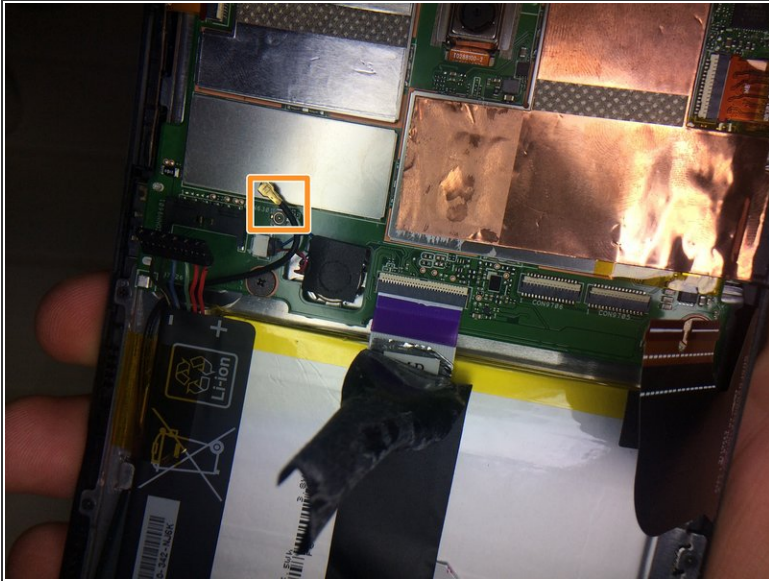
## Step 5 — Power Management



- Disconnect cable
- Remove the two Philips #0 screws from the power management board
- Remove Philips #0 screw

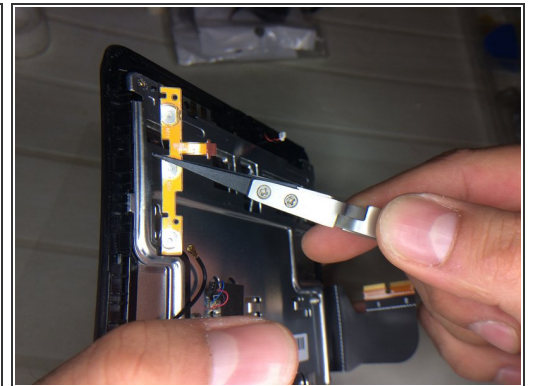
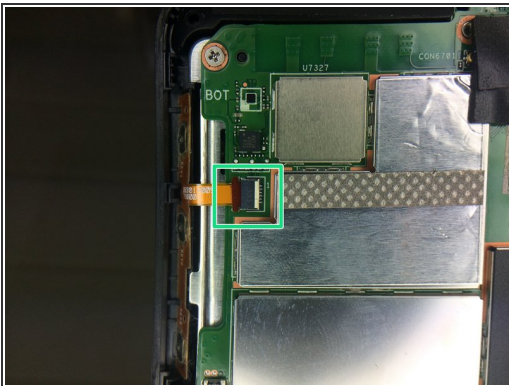


## Step 6 — MotherBoard



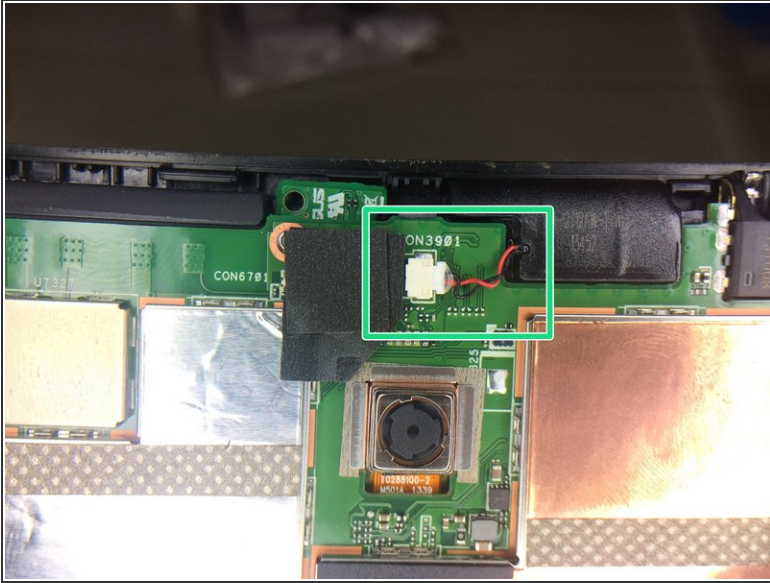
- Remove GPS antenna with a spudger.
- Disconnect the connector

## Step 7 — Power and Volume Buttons



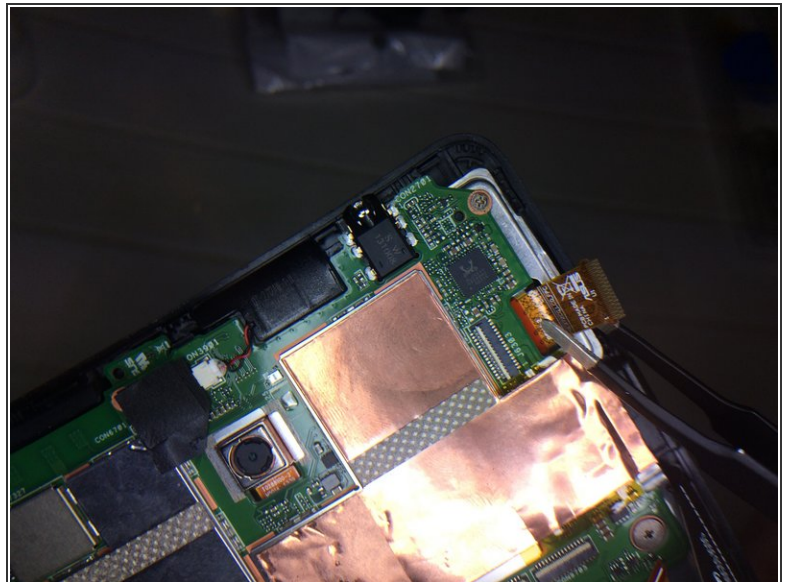
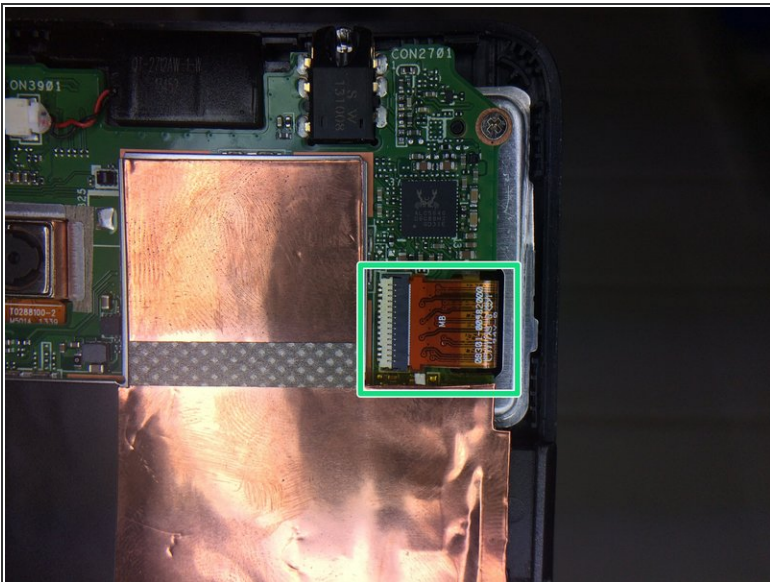
- Remove the power and volume connector

## Step 8 — Earpiece



- Disconnect Earpiece connector

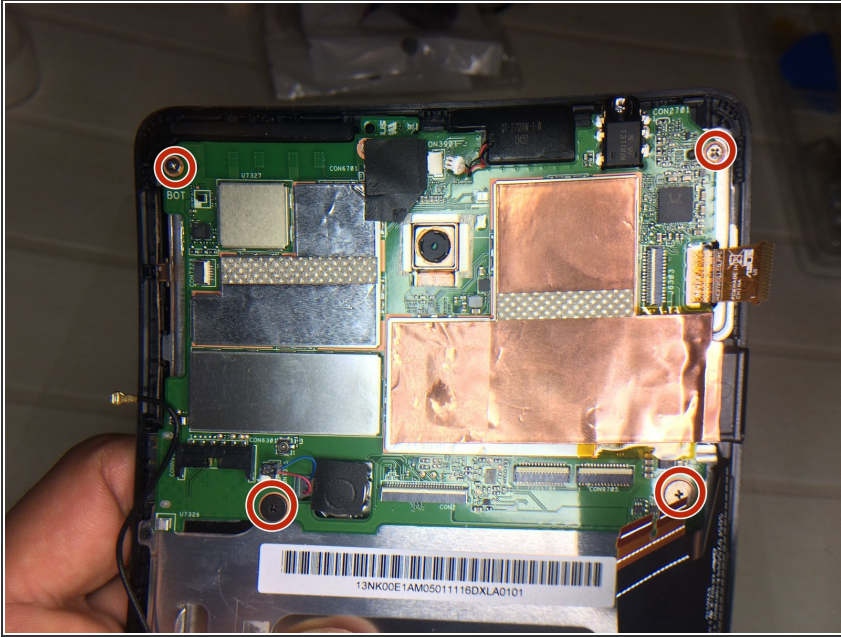
## Step 9 — Display Cable



- Remove the Display connector from motherboard.

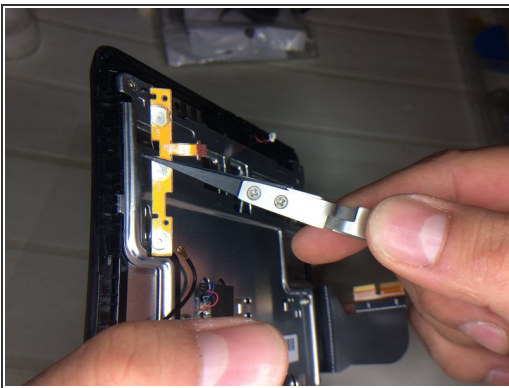


## Step 10 — MotherBoard



- Remove 4screw Philips #0 from motherboard

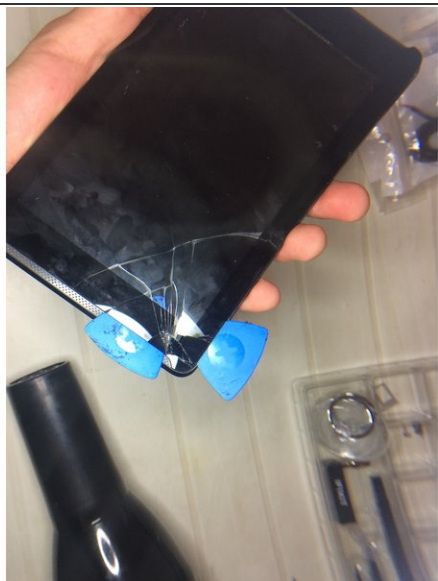
## Step 11 — Components



- Remove Components

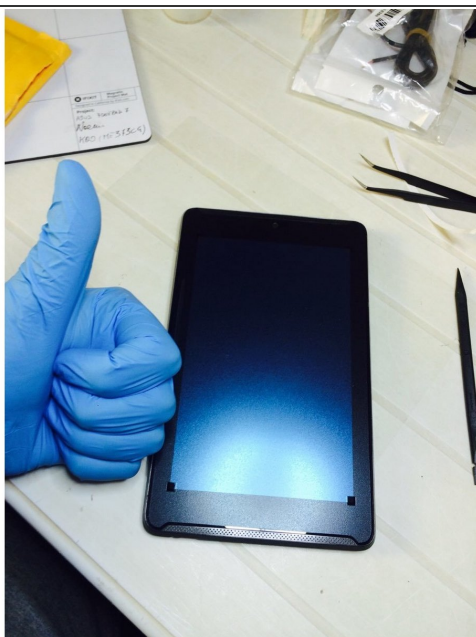


## Step 12 — Remove Glass (TouchScreen)



- Inserisci qui la competenza.

## Step 13 — Replace with new Glass. Good Job ;)



- Inserisci qui la competenza.

Per rimontare il dispositivo, segui queste istruzioni in ordine inverso.