



Samsung Galaxy Tab 3 10.1 Charger Port Replacement

How to replace the Micro USB charger port

Written By: Harvey





TOOLS:

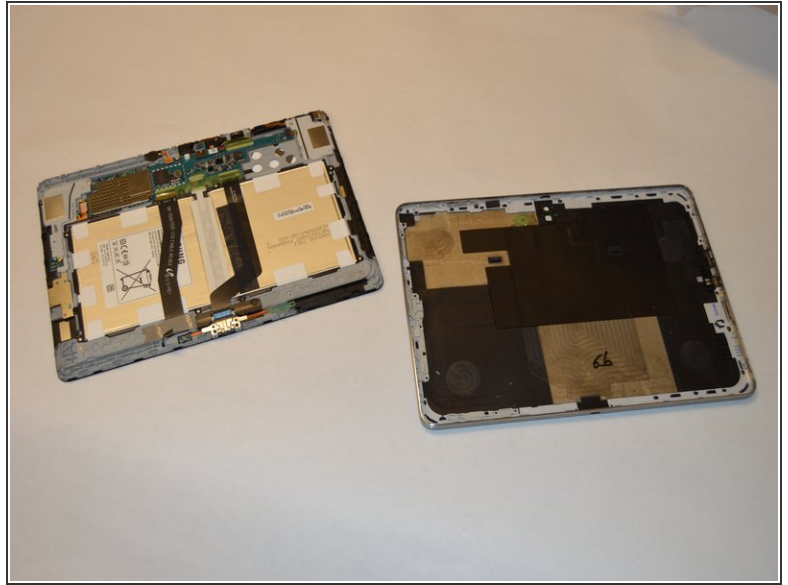
- [iFixit Opening Tool](#) (1)
- [Phillips #00 Screwdriver](#) (1)



PARTS:

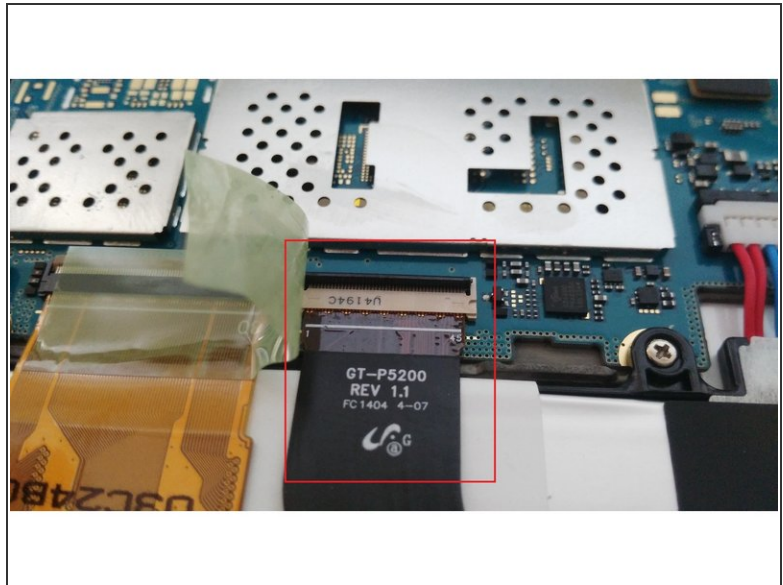
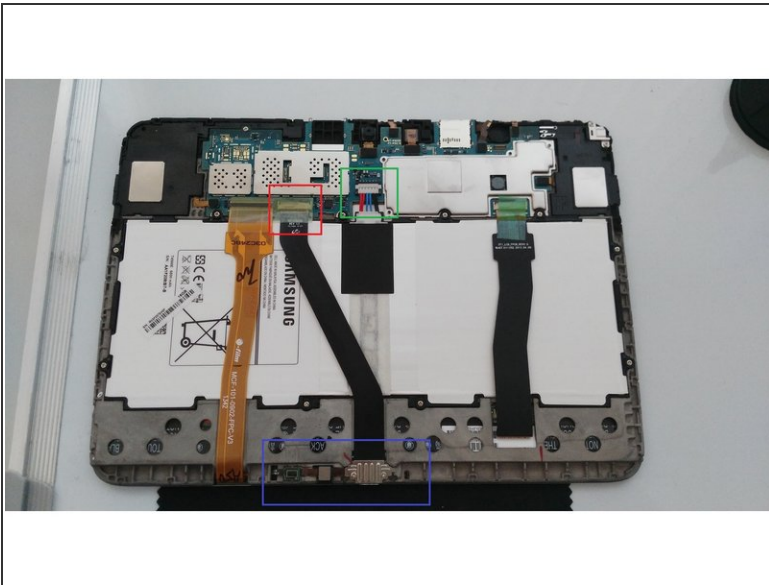
- [Galaxy Tab 3 10.1 USB Connector Assembly](#) (1)

Step 1 — Charger Port



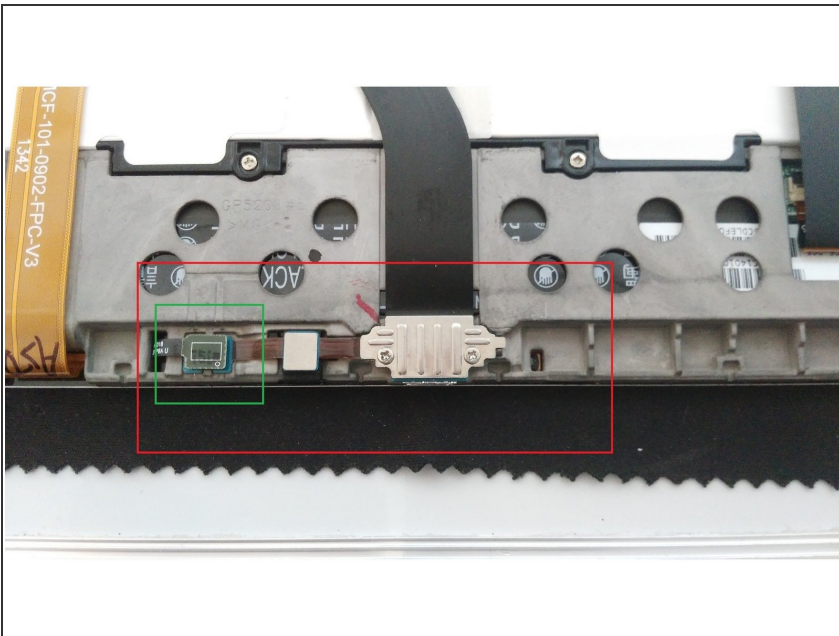
- Turn off the power to the device before removing the back case.
- Use a plastic tool to release the screen from the plastic case.

Step 2



- Disconnect the battery using a spudger. Pry up gently on both sides to release the connector (marked in green).
- Remove the tape covering the zif connector (marked in red)

Step 3



- Disconnect the cable on the left of the charger (marked in green).
- Remove the two philips screws that secure the charger port in place (marked in red).

To reassemble your device, follow these instructions in reverse order.