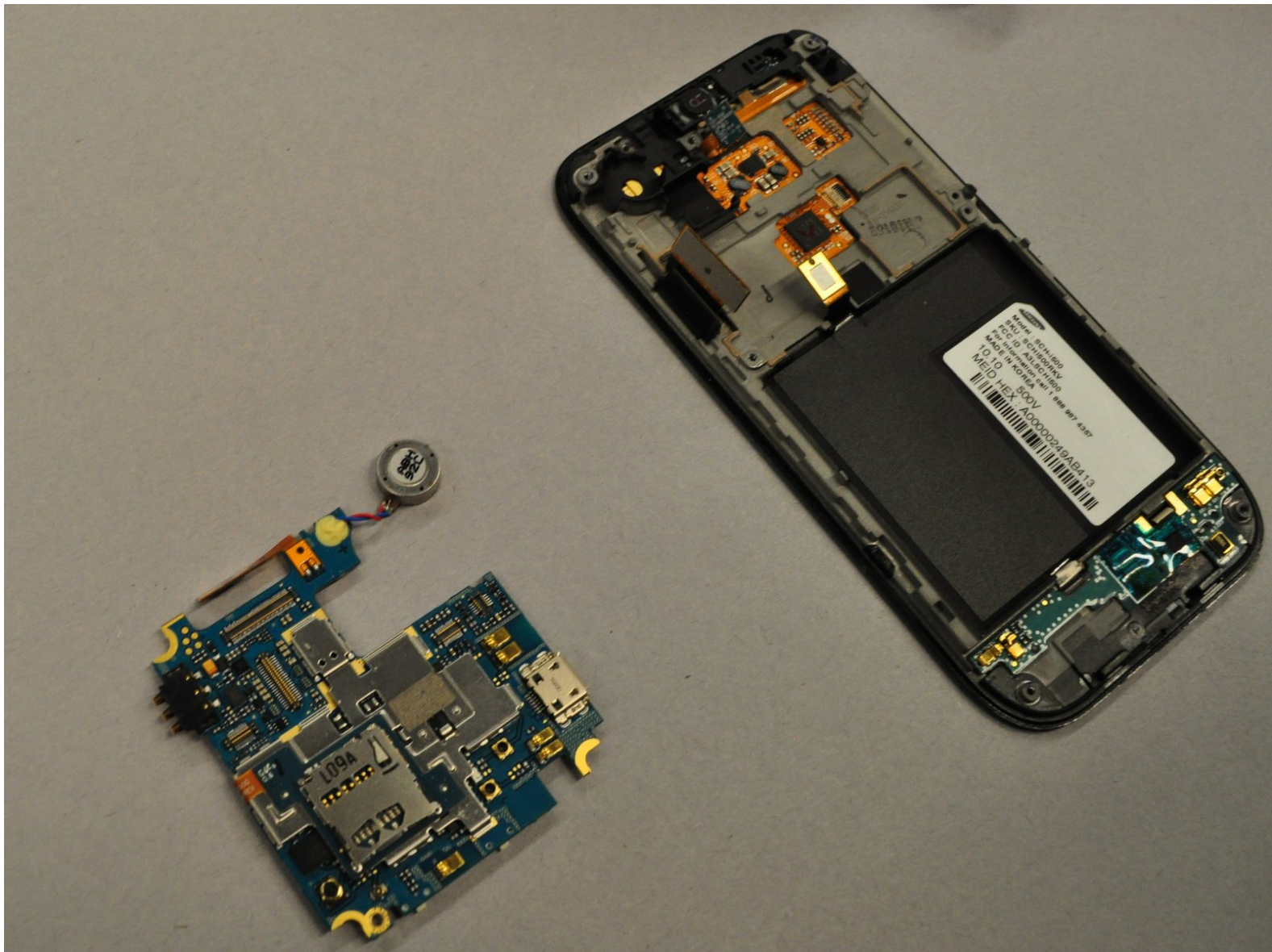




Samsung Fascinate Motherboard Replacement

Installing the motherboard of the Samsung Galaxy S.

Written By: Kevin Carlson



INTRODUCTION

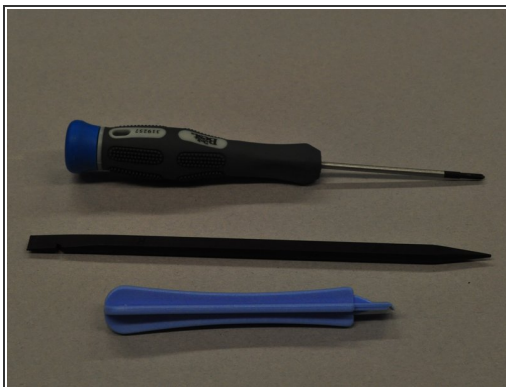
This guide will show you how to get access to the motherboard of the Samsung Galaxy S so that you can remove and/or replace it.



TOOLS:

- [iFixit Opening Tools](#) (1)
 - [Spudger](#) (1)
 - [Phillips #00 Screwdriver](#) (1)
-

Step 1 — Back Case



- To remove the back case of the Samsung Galaxy S, you may need a spudger.
- Identify the slit which is at the bottom edge of the phone.

Step 2



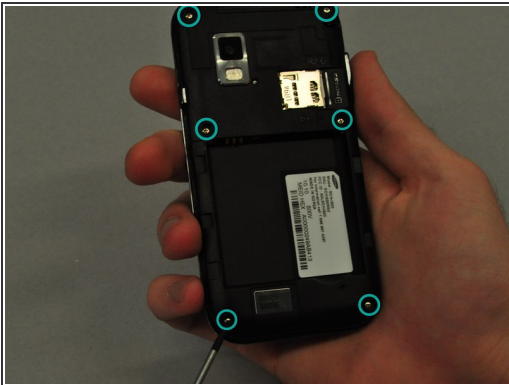
- Insert the edge of the spudger into the slit and use it to pry the back case off of the phone.

Step 3 — Battery



- Insert the spudger into the space between the battery and the phone and pry the battery out as you slide it along the underside the battery.

Step 4 — Speaker



- Use the screwdriver to unscrew each of the 6 silver screws holding the main case to the LCD touchscreen.
- If the screws are stuck, use the spudger to pry them out.

Step 5



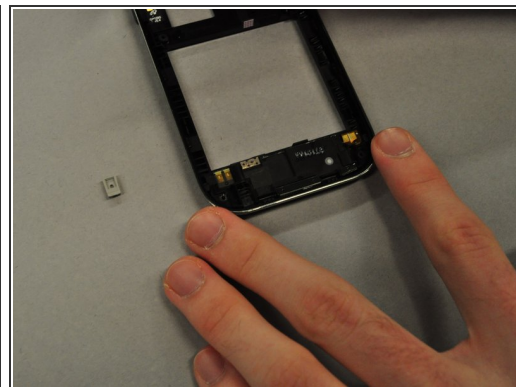
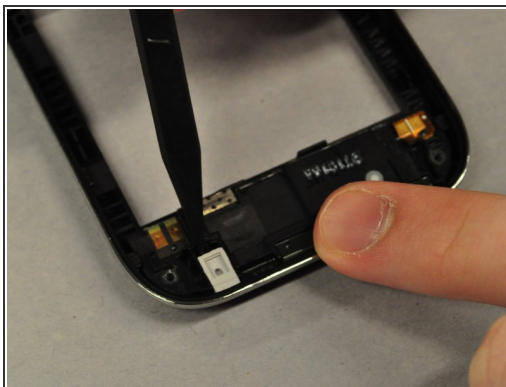
- Use the plastic opening tool to pry the main case from the LCD touchscreen.
- Insert the thin edge of the plastic opening tool into the groove between the silver edge and black edge.
- Run the tool all the way around the edge of the phone until you hear each of the clips detach.

Step 6



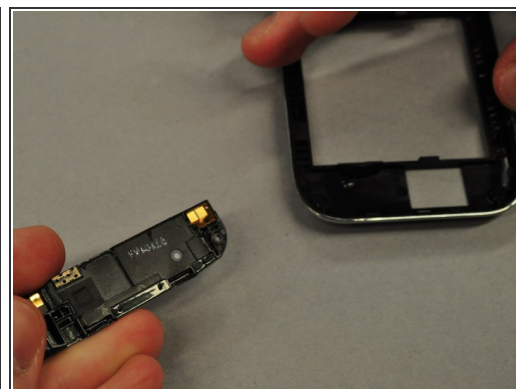
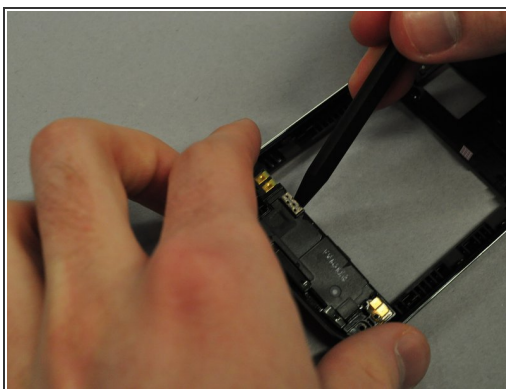
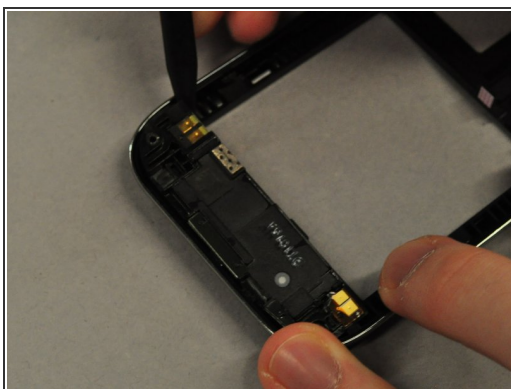
- Once the clips are detached, separate the main case from the LCD touchscreen.

Step 7



- Use the spudger to pry out the grey rubber rectangular component from the main case.

Step 8



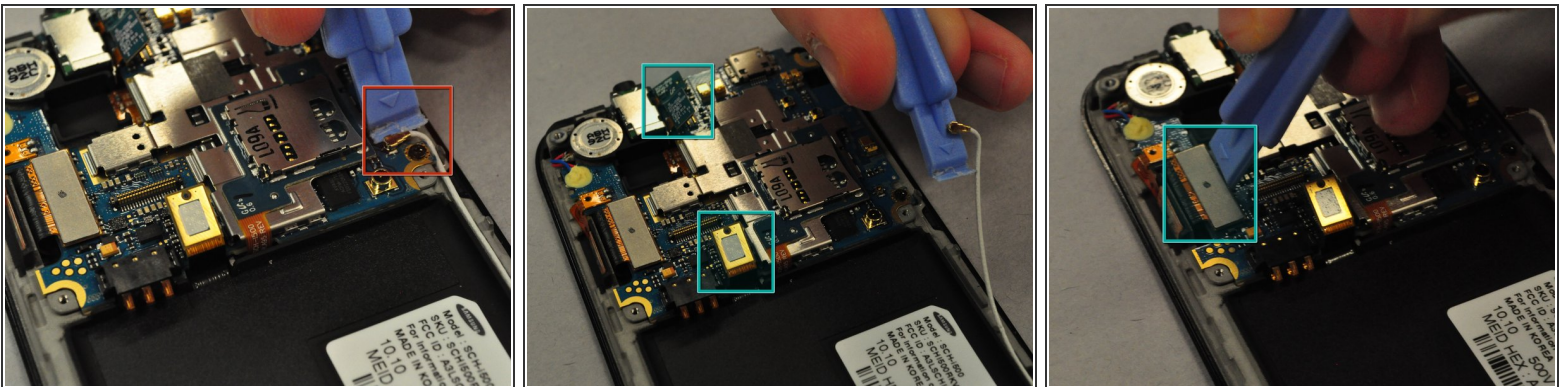
- Use the spudger to pry along the groove between the speaker and the main case.
- Once the speaker is unclipped it should pop out easily.

Step 9 — Camera



- Using the plastic opening tool, you will need to detach the black square component which is boxed in blue.
- Pry camera unit attached to it off the motherboard.

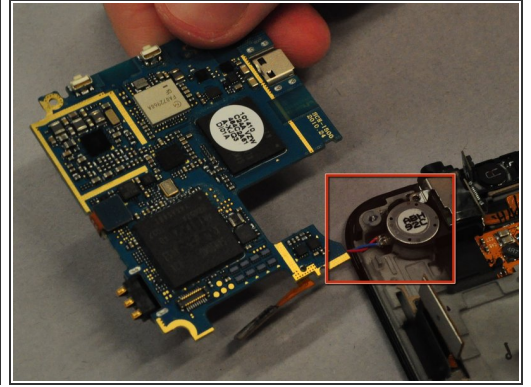
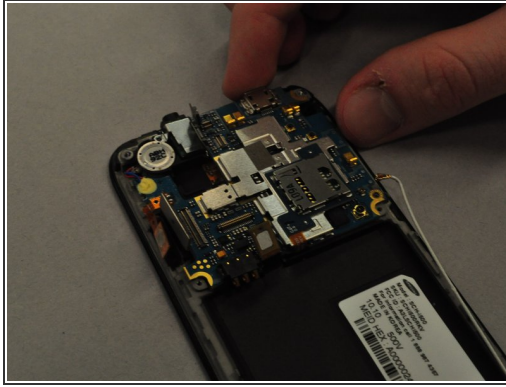
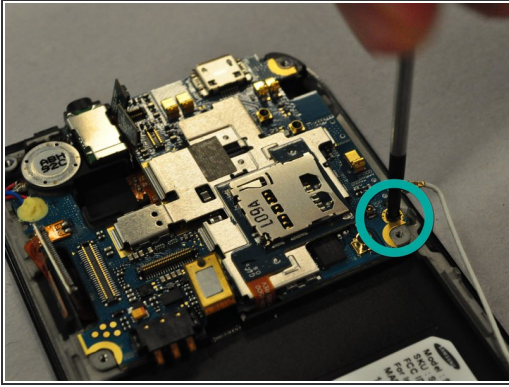
Step 10 — Motherboard



- Use the plastic opening tool to disconnect the white wire boxed in red.
- Carefully disconnect the green and golden boxed components from the motherboard.

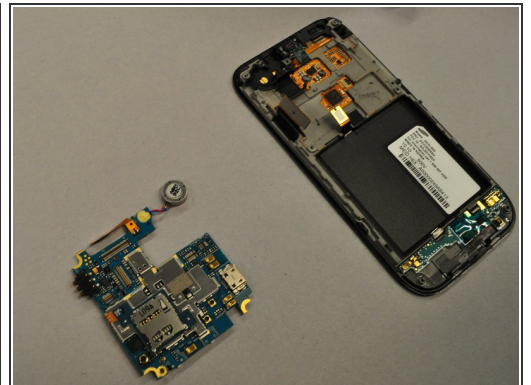
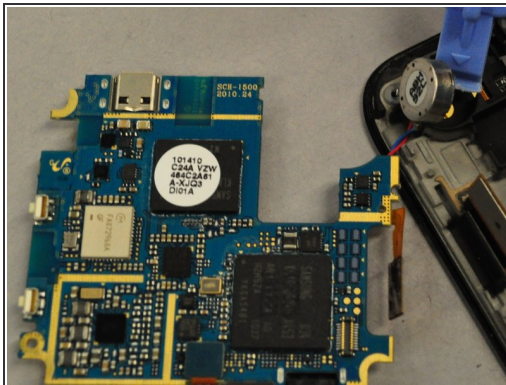
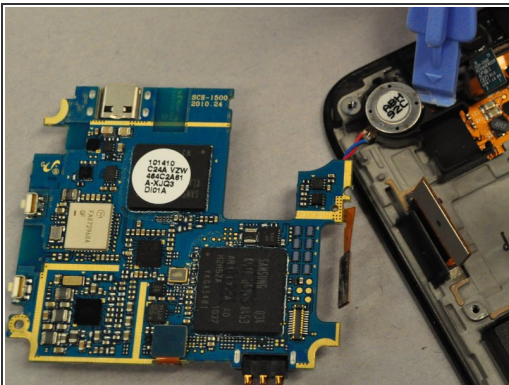
⚠ The boxed components do not completely detached from the motherboard.

Step 11



- Use the screwdriver to remove the black screw circled in blue.
 - Lift the motherboard off of the touchscreen.
- ⚠ The motherboard is still attached to the phone by wires. Do not pull on the wires.

Step 12



- Using the plastic opening tool, gently pry the silver cylinder out of its housing.
- The cylinder is held in place by a weak adhesive and shouldn't be too difficult to remove.

To reassemble your device, follow these instructions in reverse order.