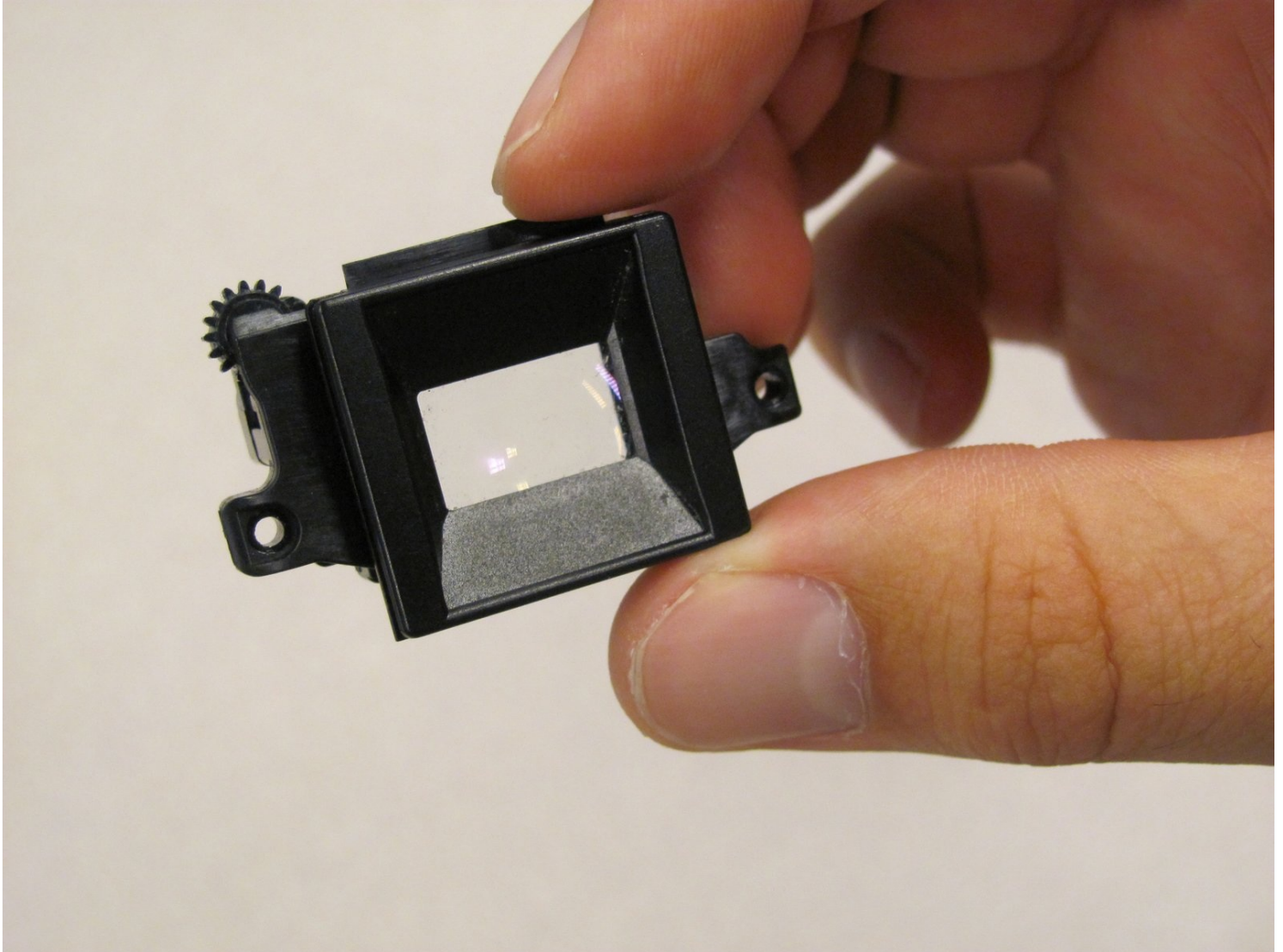




# Canon EOS 30 Inner Eyepiece Replacement

This guide will help you step by step to reach...

Written By: Jackie



# INTRODUCTION

This guide will help you step by step to reach and replace the inner eyepiece of canon EOS 30.

---

## TOOLS:

Phillips #00 Screwdriver (1)

---

### Step 1 — Front Panel



- Remove the two 4.8 mm black screws above the lens on the front of the camera.

## Step 2



- Remove the 4.3 mm black screw under the lens ring, and the 4.8 mm black screw under the camera.

## Step 3



- Remove the 4.8 mm black screw on the left side of the camera.



## Step 4



- Remove the front panel by lifting it away from the camera's body.

## Step 5 — Top Panel



- Slide the outer eyepiece upward to remove it.

## Step 6



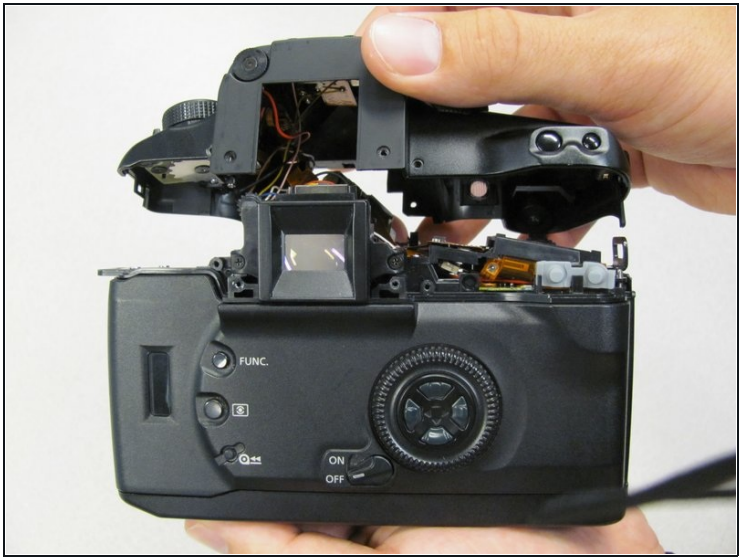
- Remove the two 4.75 mm black screws located on the top of the camera.

## Step 7



- Remove the four 4.3 mm black screws near the bottom corners of the eyepiece at the back of the camera.

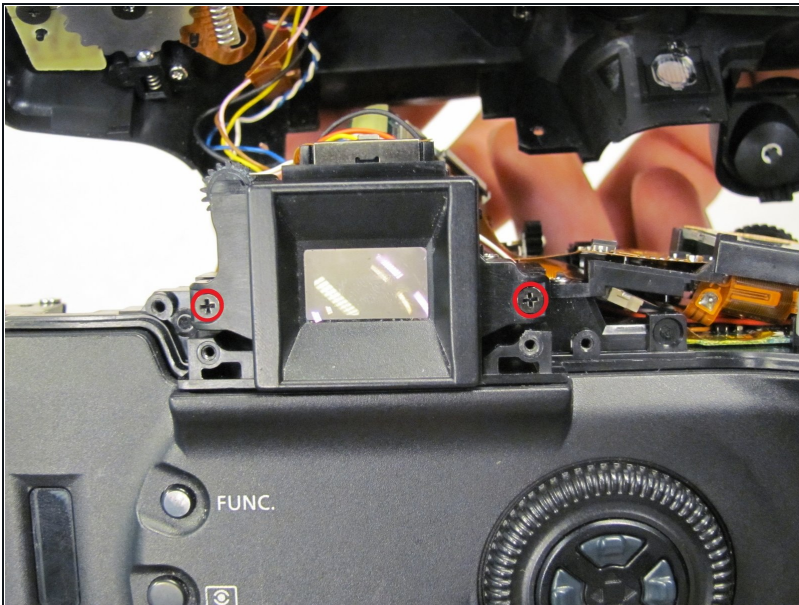
## Step 8



- Slowly separate the top panel from the camera by pushing it upward.

⚠ Separating the top panel too far or quickly can damage the ribbon cable and connecting wires that are still attached to the top panel of the camera.

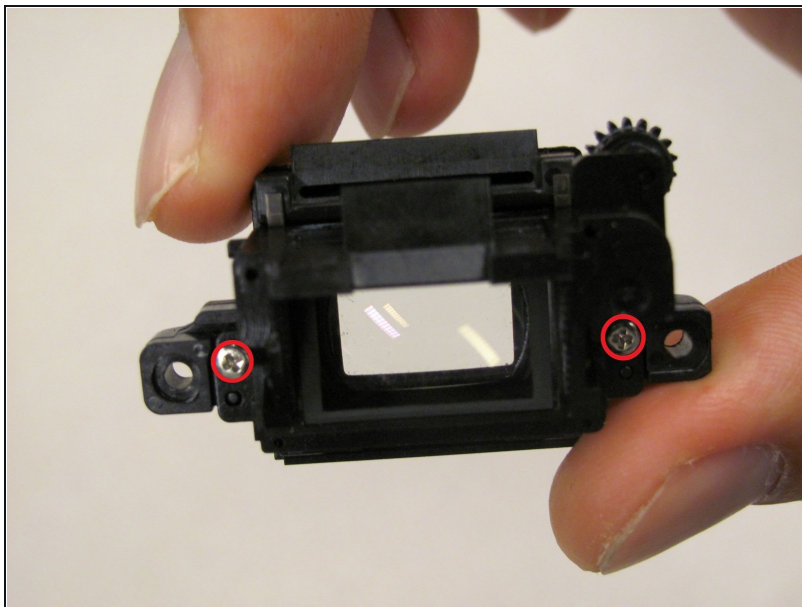
## Step 9 — The Inner Eyepiece



- Remove the two 9.5 mm black screws that attach the inner eyepiece to the camera's body and remove the eyepiece.

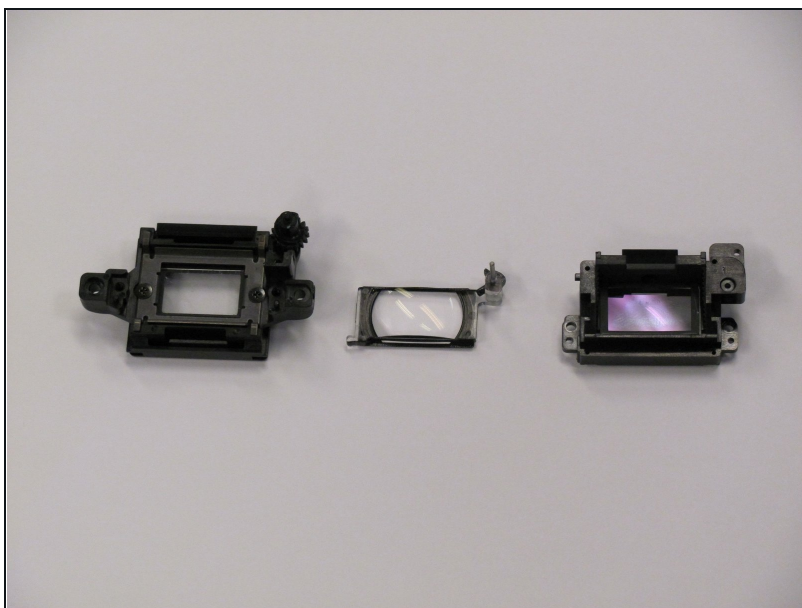


## Step 10



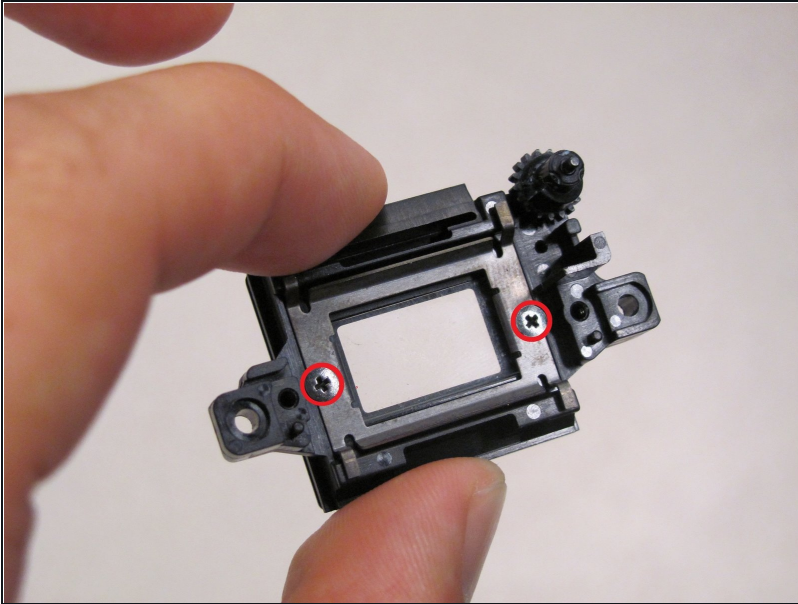
- Remove the two 4.3 mm silver screws on each side of the inner eyepiece.

## Step 11



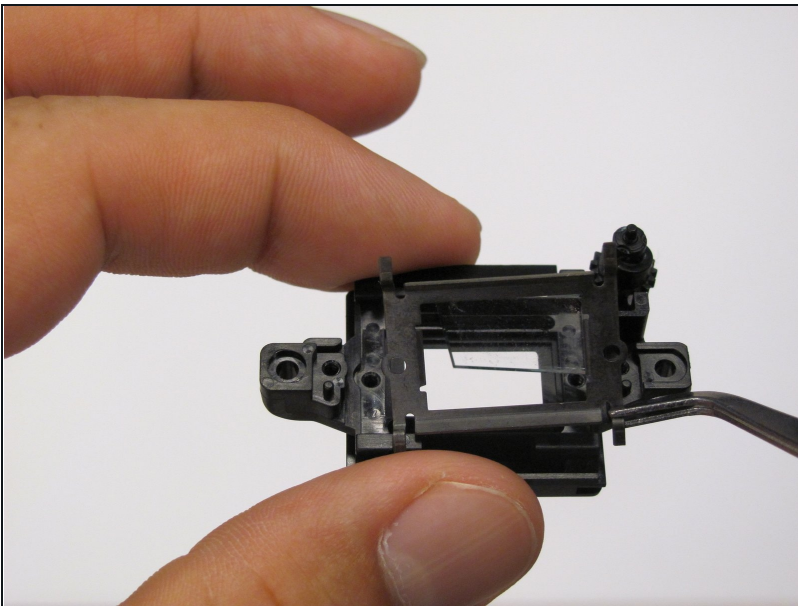
- Separate the inner eyepiece into three parts.
- ⚠ The outer piece (left) has a small gear, which can easily fall off and get lost.

## Step 12



- Remove the two 3.6 mm black screws from the outer piece.

## Step 13



- Remove the glass panel and replace it.

⚠ When removing the glass panel make sure not to separate the small rubber piece attached around the frame.

---

To reassemble your device, follow these instructions in reverse order.