



Nintendo 3DS Left Shoulder Button Replacement

Replace the left shoulder button on your 3DS...

Written By: David Hodson



INTRODUCTION

Replace the left shoulder button on your 3DS and regain L-button functionality.

TOOLS:

iFixit Opening Tool (1)
JIS #00 Screwdriver (1)


PARTS:


Nintendo 3DS (2011) Left and Right
Shoulder Button Switches (1)

Step 1 — Back Cover



- Unscrew the four Phillips #00 screws along the top of the back cover.

 The screws are held in place by locking washers, and will not come out of the back cover.

 The comments section is full of unlucky souls who will tell you that the screws here through step 4 will strip incredibly easily. Press down fairly hard, and go slow.

Step 2



① Hold the device in one hand and turn it over.

- Grab the top edge of the back cover with your opposite hand so that the cover does not fall back into place.

① Flip the 3DS over again so that the back cover is facing up.

- Pull the back cover up and away from the rest of the device to remove it.

Step 3 — Battery



- Insert a plastic opening tool into the notch in the lower case above the battery.
- Pry the battery up with the plastic opening tool.
- Grab the top edge of the battery and lift it out of the lower case.

Step 4 — Lower Case

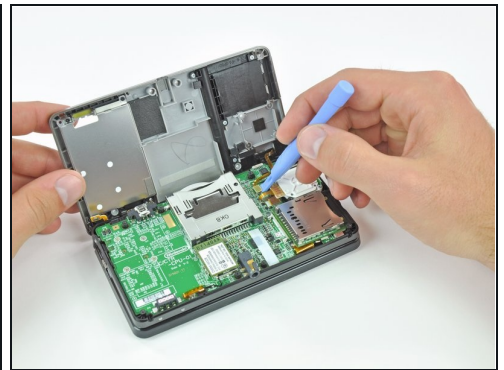


- Remove the nine 6.3 mm black Phillips screws from the lower case.

⚠ These screws will strip very easily unless you use the correct size bit. Apply pressure to the screws while turning to avoid stripping them.

- Remove the 2.4 mm silver Phillips screw above the game cartridge slot.

Step 5

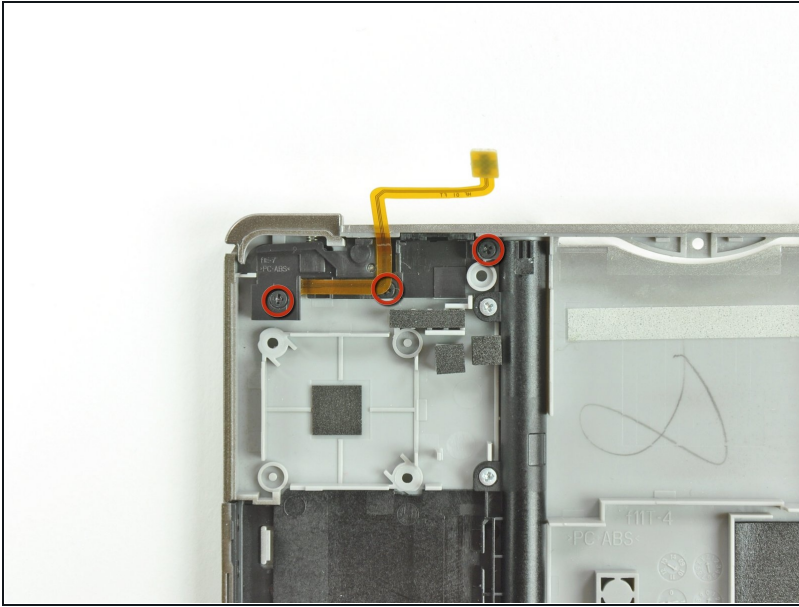


- Lift the bottom edge of the lower case off the rest of the 3DS.

⚠ There are still two ribbon cables connecting the mother board to the case, so be sure not to pull the lower case all the way off.

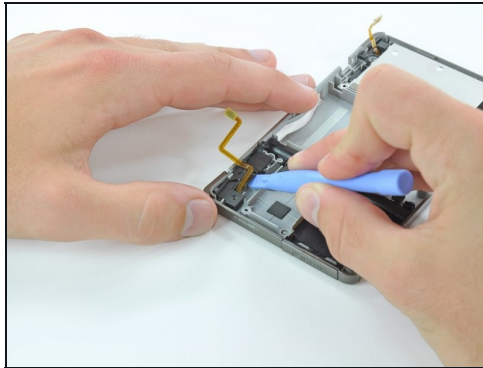
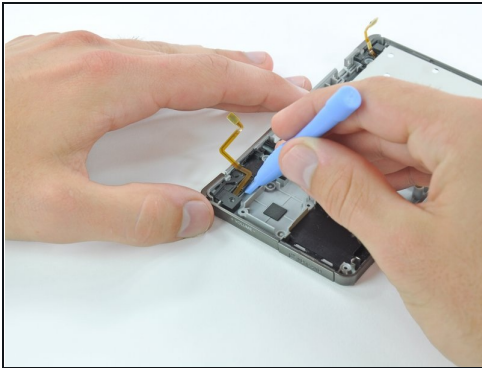
- Use a plastic opening tool to pry the shoulder button ribbon cables off their sockets on the motherboard.
- Remove the lower case from the device.

Step 6 — Left Shoulder Button



- Remove the three 3.6 mm Phillips screws from the button housing.

Step 7



- Insert a plastic opening tool under the left side of the left shoulder button cover.
- Pry the black plastic cover up from the lower case.
- Grab the cover and lift it off of the lower case.
 - ☑ If the shoulder button contact and ribbon cable come off with the cover, be sure to reinstall them in the correct orientation.

Step 8



- Press lightly on the back of the button until it becomes unattached. Be careful not to lose the small spring and pin behind the plastic button.

To reassemble your device, follow these instructions in reverse order.