



Nintendo 3DS Circle Pad Joystick Replacement

Is your 3DS not responding correctly to your...

Written By: David Hodson



INTRODUCTION

Is your 3DS not responding correctly to your Circle Pad inputs? Replace the bottom joystick mechanism and get moving again.



TOOLS:

- [iFixit Opening Tool](#) (1)
- [Spudger](#) (1)
- [Phillips #00 Screwdriver](#) (1)




PARTS:


- [Nintendo 3DS \(2011\) Circle Pad Control Board Assembly](#) (1)
- [Nintendo 3DS Circle Pad Joystick](#) (1)

Step 1 — Back Cover



- Unscrew the four Phillips #00 screws along the top of the back cover.

 The screws are held in place by locking washers, and will not come out of the back cover.

 The comments section is full of unlucky souls who will tell you that the screws here through step 4 will strip incredibly easily. Press down fairly hard, and go slow.

Step 2



- i Hold the device in one hand and turn it over.
- Grab the top edge of the back cover with your opposite hand so that the cover does not fall back into place.
- i Flip the 3DS over again so that the back cover is facing up.
- Pull the back cover up and away from the rest of the device to remove it.

Step 3 — Battery



- Insert a plastic opening tool into the notch in the lower case above the battery.
- Pry the battery up with the plastic opening tool.
- Grab the top edge of the battery and lift it out of the lower case.

Step 4 — Lower Case



- Remove the nine 6.3 mm black Phillips screws from the lower case.
- ⚠ These screws will strip very easily unless you use the correct size bit. Apply pressure to the screws while turning to avoid stripping them.
- Remove the 2.4 mm silver Phillips screw above the game cartridge slot.

Step 5



- Lift the bottom edge of the lower case off the rest of the 3DS.

⚠ There are still two ribbon cables connecting the mother board to the case, so be sure not to pull the lower case all the way off.

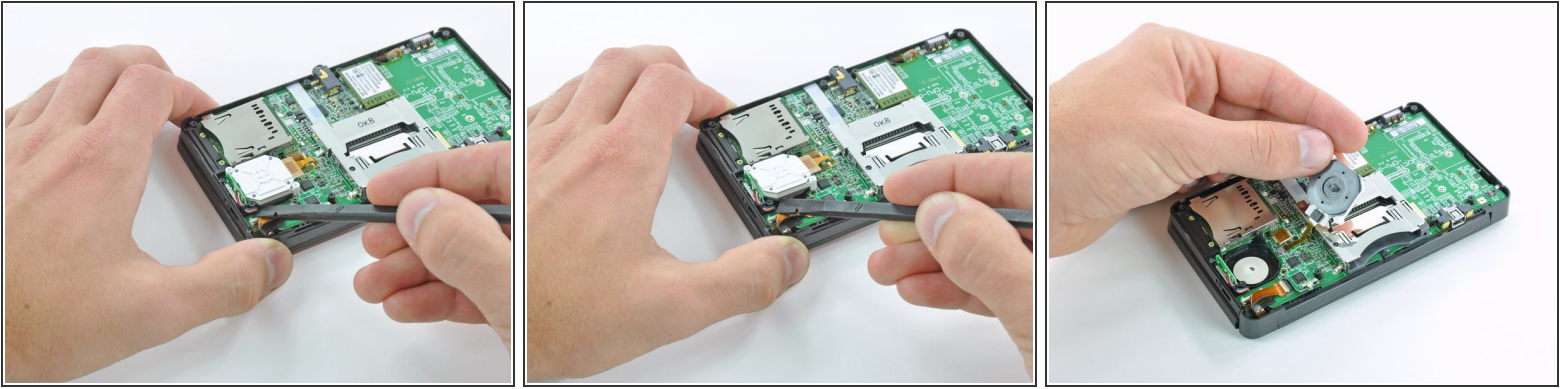
- Use a plastic opening tool to pry the shoulder button ribbon cables off their sockets on the motherboard.
- Remove the lower case from the device.

Step 6 — Circle Pad Joystick



- Remove the two 7.7 mm Phillips screws securing the back of the Circle Pad to the motherboard.

Step 7



- Use the flat end of a spudger to pry the back of the Circle Pad off the motherboard.
- Lift the Circle Pad joystick off the motherboard and lay it on its back so that the ribbon cable connector is accessible.

Step 8



- Use the flat end of a spudger or your fingernail to flip up the retaining flap on the Circle Pad ribbon cable ZIF socket.
- ⚠ Be sure you are prying up on the hinged retaining flap, **not** the socket itself.
- Lift the Circle Pad joystick off the motherboard.

To reassemble your device, follow these instructions in reverse order.