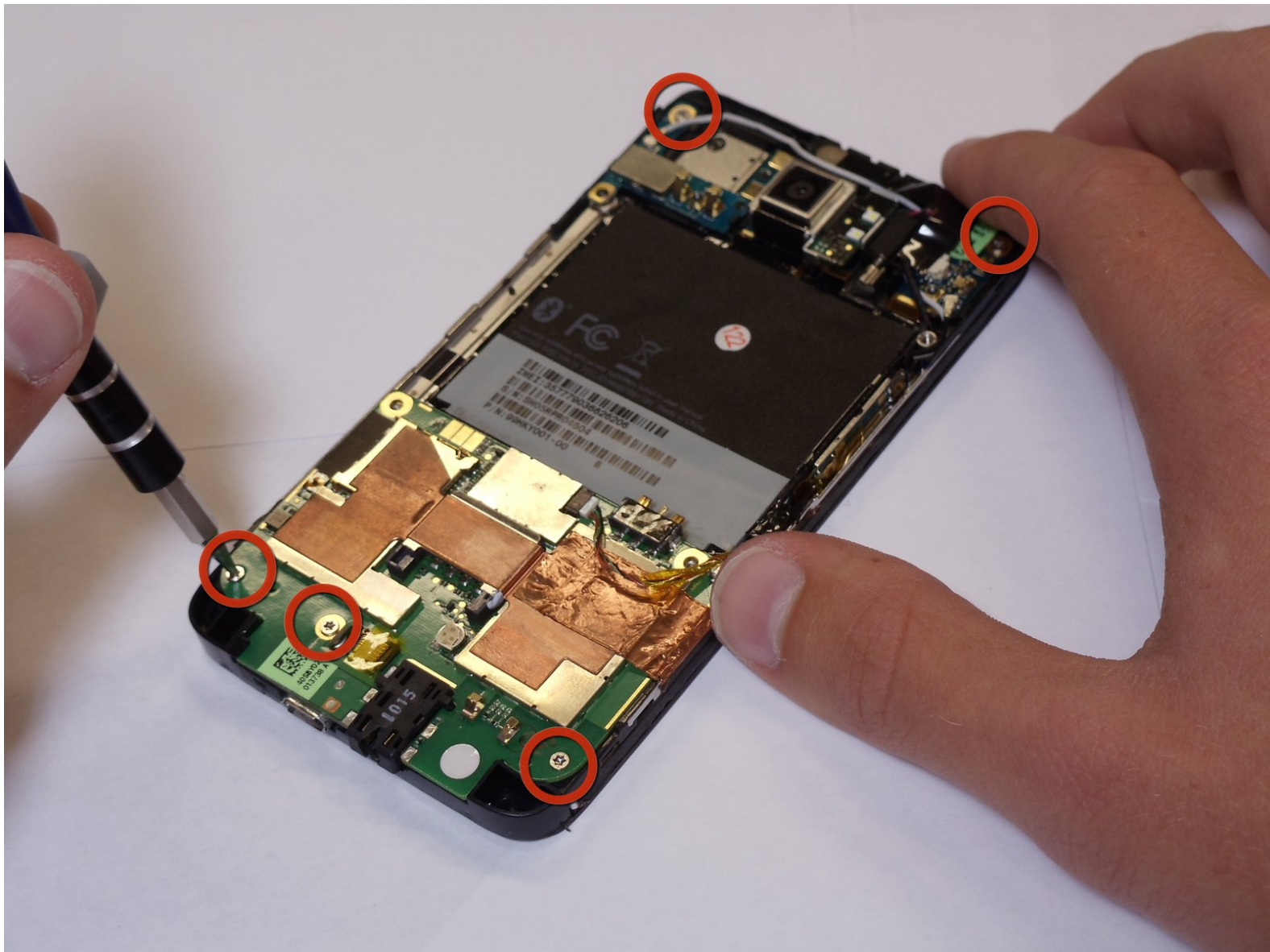




HTC HD2 Motherboard Replacement

Replace the motherboard of your HTC HD2.

Written By: Nathan Puchalski



INTRODUCTION

This guide will assist you in removing the motherboard and rigid flex board in the HTC HD2.

TOOLS:

- [T5 Torx Screwdriver](#) (1)
 - [Spudger](#) (1)
 - [Tweezers](#) (1)
-

Step 1 — Battery



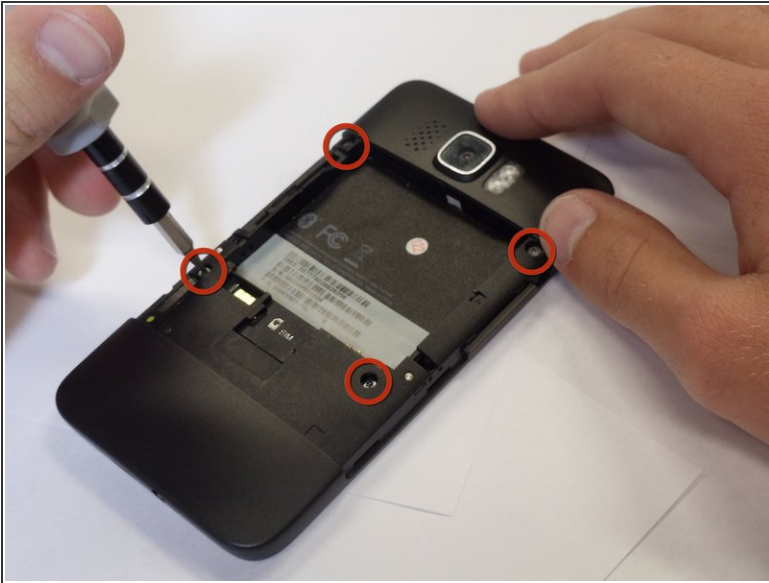
- Carefully pull the rear cover from the back of the phone.
- Place a finger beneath the small lip on the left side of the battery.

Step 2



- Lay the phone down on it's screen.
- Lift up on the lip and pull the battery from the phone.

Step 3 — Midframe



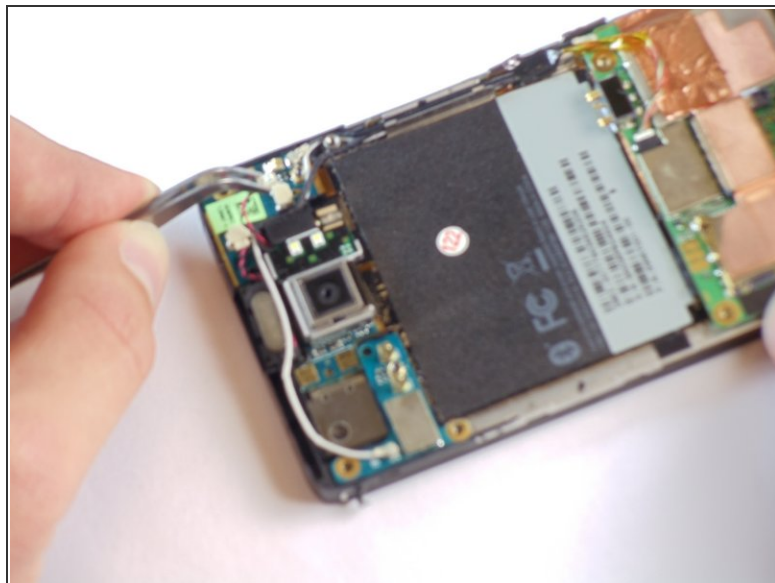
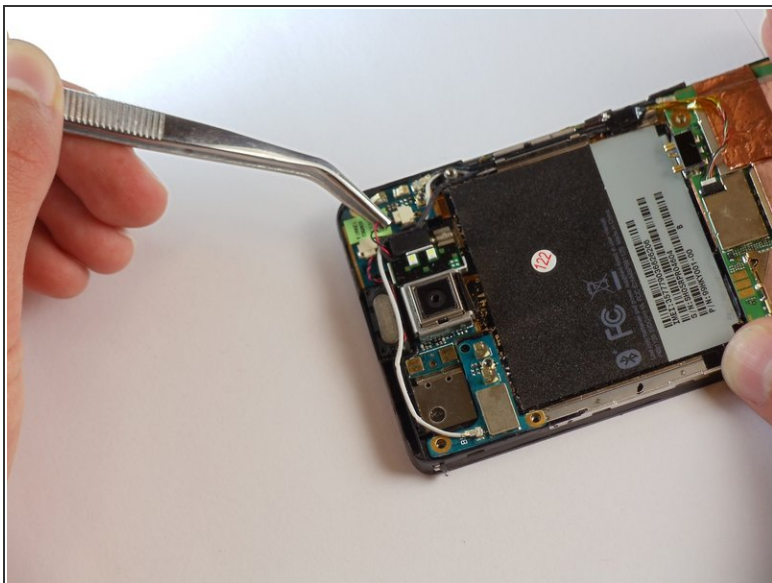
- Remove the four black 3.5mm T5 screws from the back of the phone.

Step 4



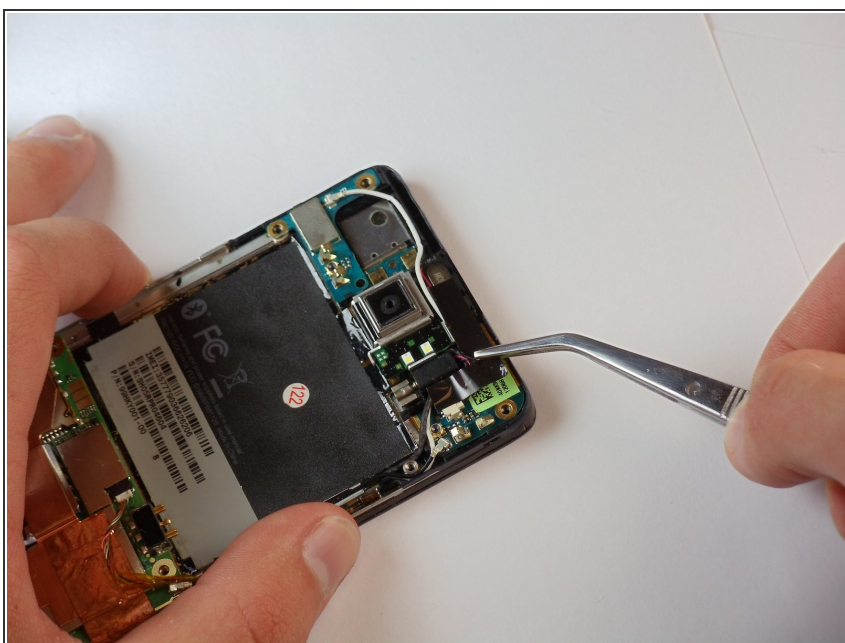
- Insert the flat end of a spudger between the midframe and the display.
- Slide the spudger along the seam between the frame and the display.
- Using the spudger for leverage, carefully pry the midframe away from the display assembly.
 - ⓘ This process will take some effort. Continue to pry slowly and carefully until the frame begins to detach.
- As it releases, pull the midframe away from the phone.
- ⓘ The volume control tab may fall off during removal. It can be easily reattached.

Step 5 — Vibrator



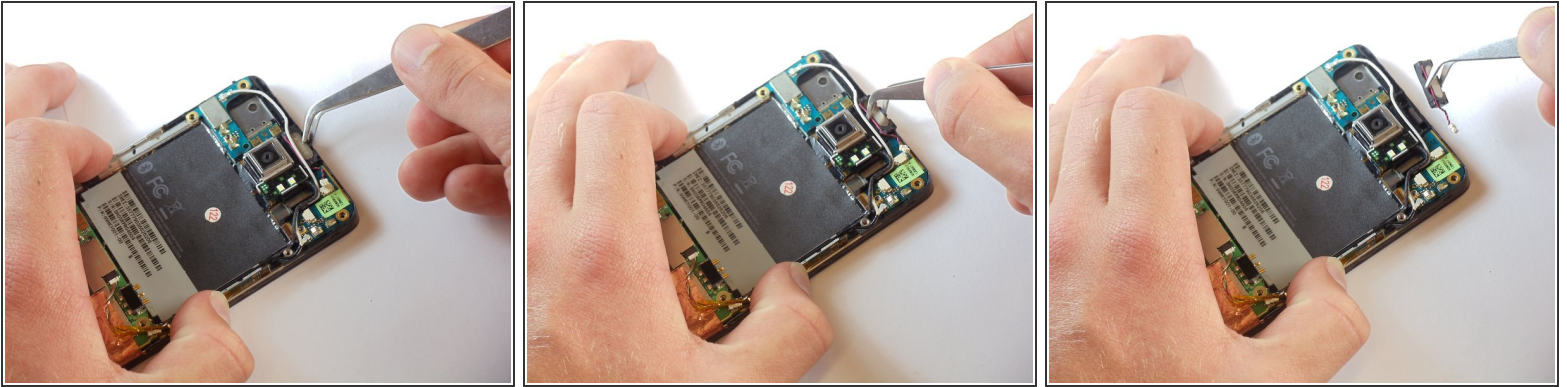
- Set the phone down on its screen.
- Using tweezers, unplug the small vibrator connector from its socket on the motherboard.

Step 6



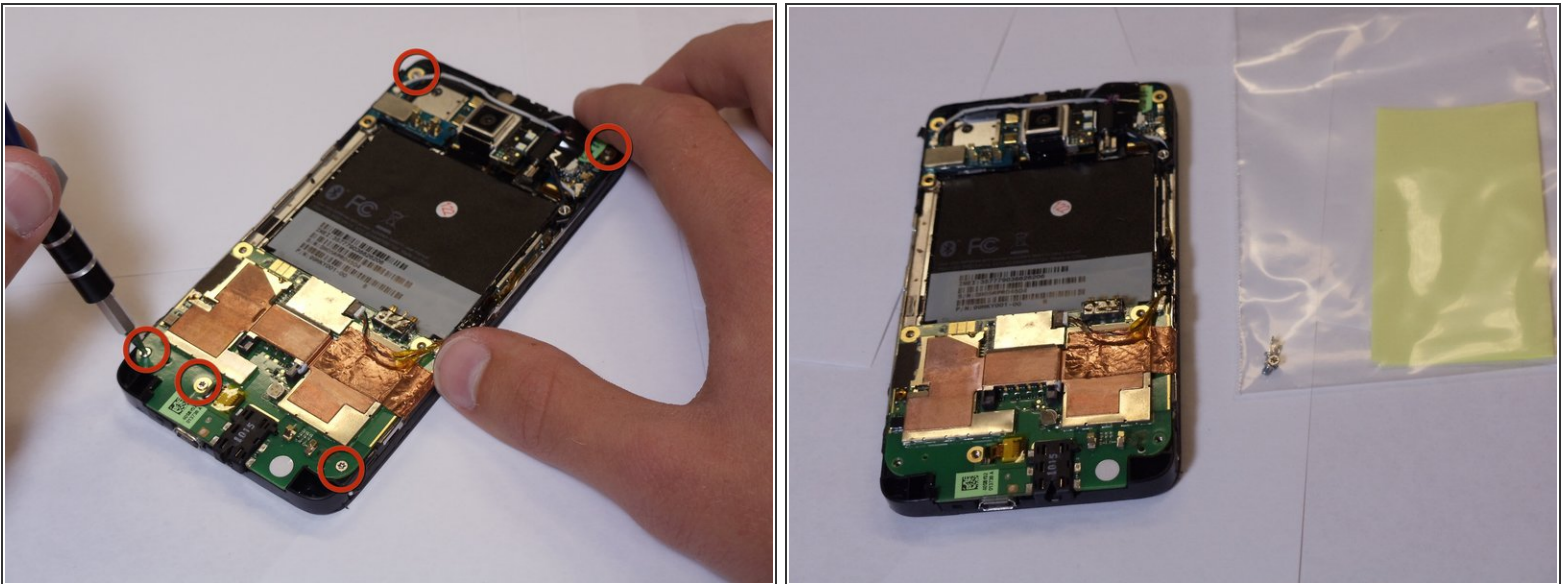
- Pull the vibrator motor from the phone.

Step 7 — Earpiece Speaker



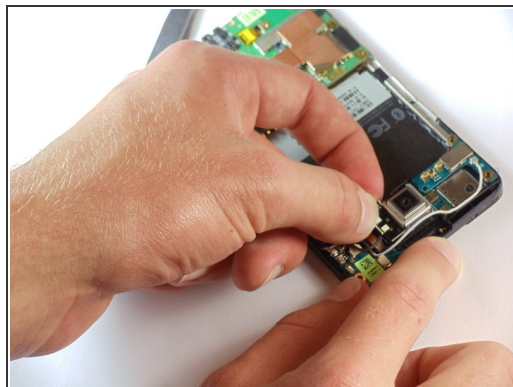
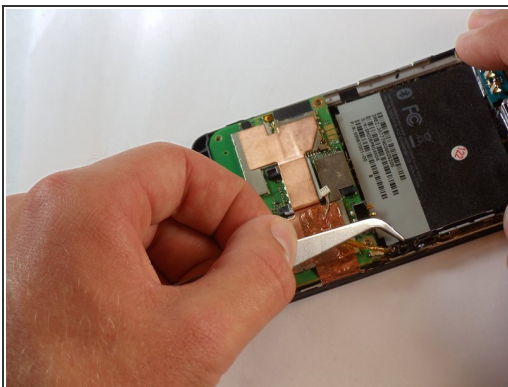
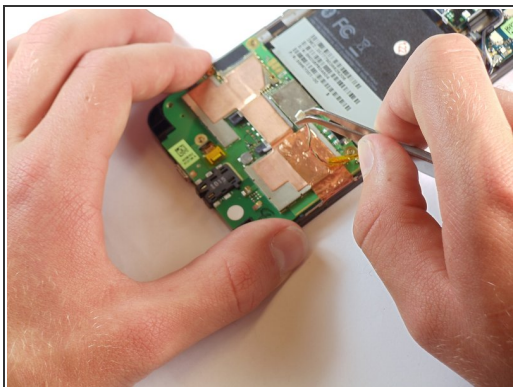
- Disconnect the small speaker cable from its socket on the motherboard.
- Remove the earpiece speaker from the phone.

Step 8 — Motherboard



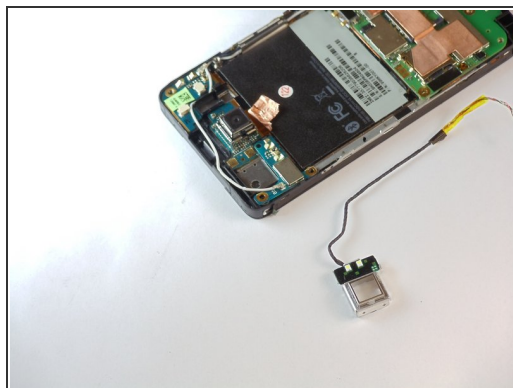
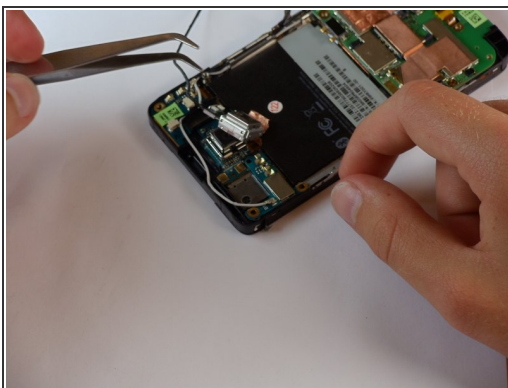
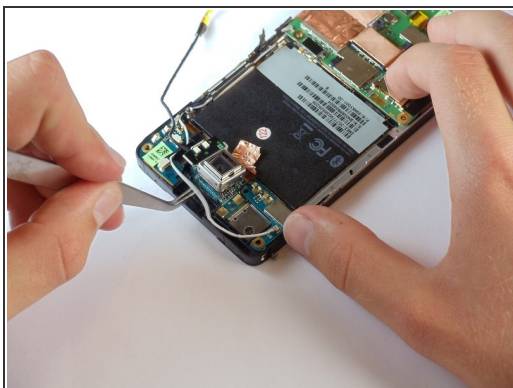
- Remove five T5 Torx screws from the motherboard.

Step 9



- Disconnect the flash cable from its socket at the bottom of the motherboard.
- Carefully pull the flash cable from its slot in the side of the phone.

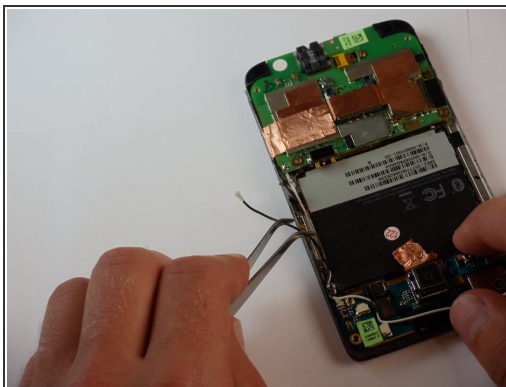
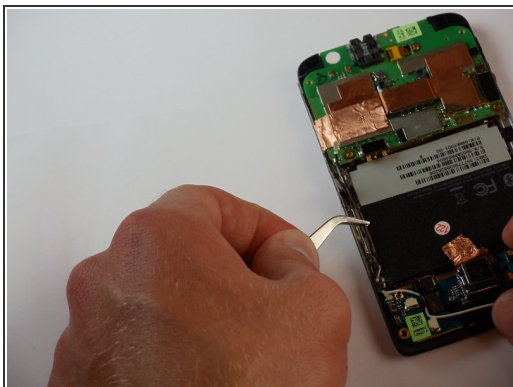
Step 10



- Pull the camera flash and cover off of the board.
- ⓘ You may need to peel back the sticker that sits behind the battery.

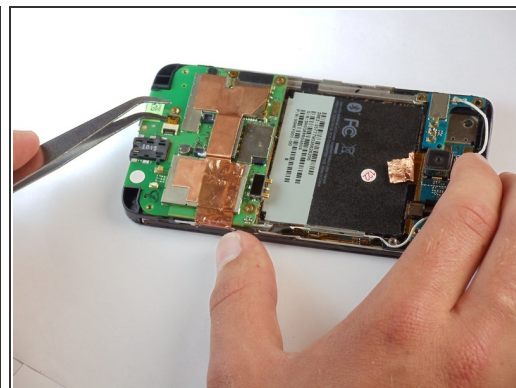
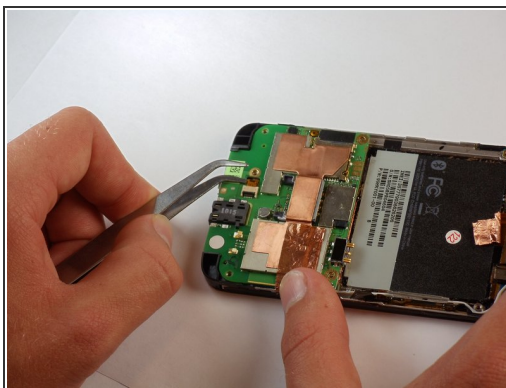
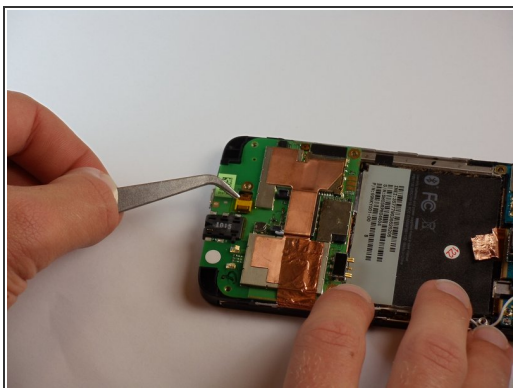
⚠ Work carefully. Excessive force can damage the camera or motherboard.

Step 11



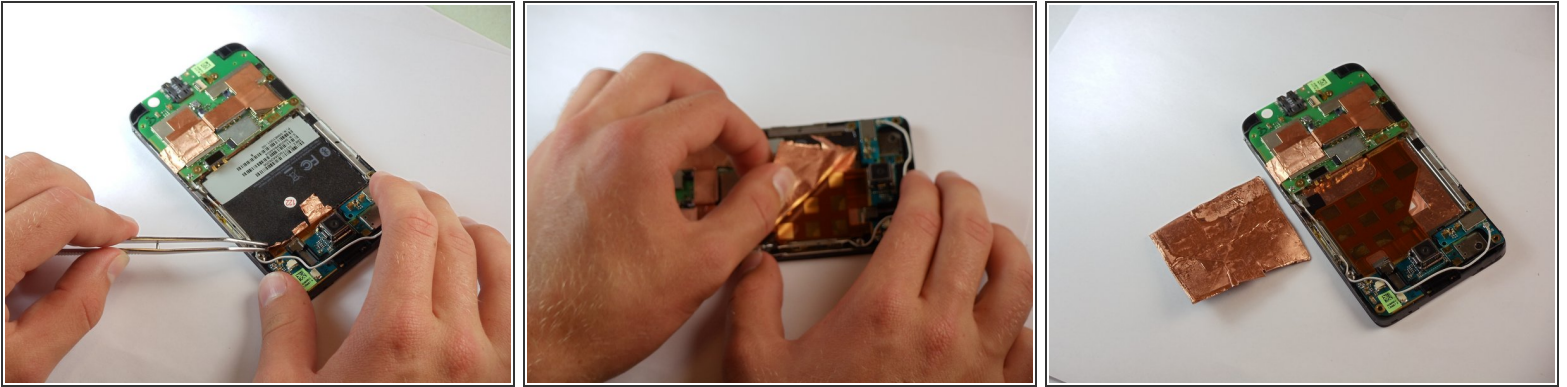
- Now locate the coaxial bluetooth cable that connects the top and bottom boards of the phone.
- Use tweezers to pop both ends of the cable from the boards and remove it completely.

Step 12



- Now find the AP FPC, one of the smallest connectors on the bottom board.
- Pop the small black tab up using tweezers, then unplug the cable.

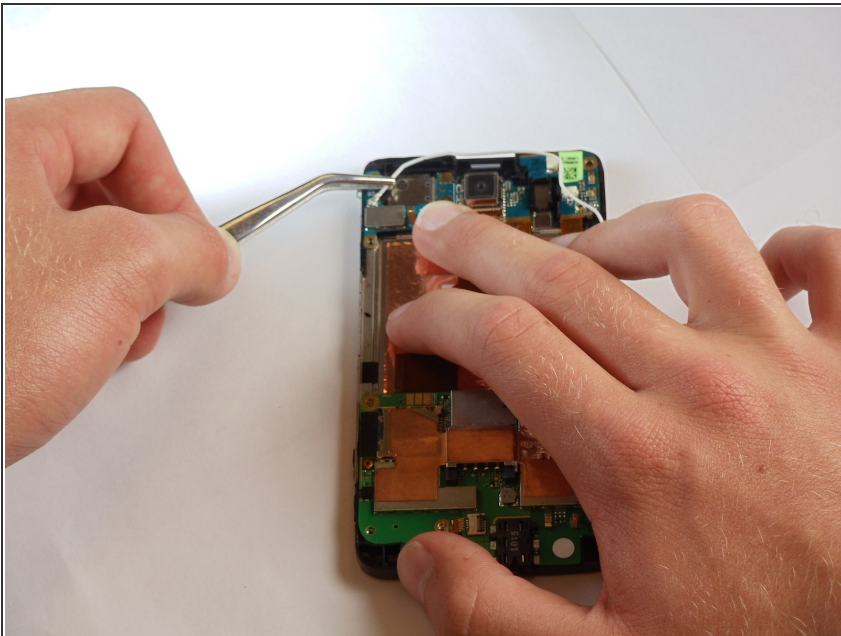
Step 13



⚠ This step is pretty much irreversible, so do not do this unless you absolutely have to.

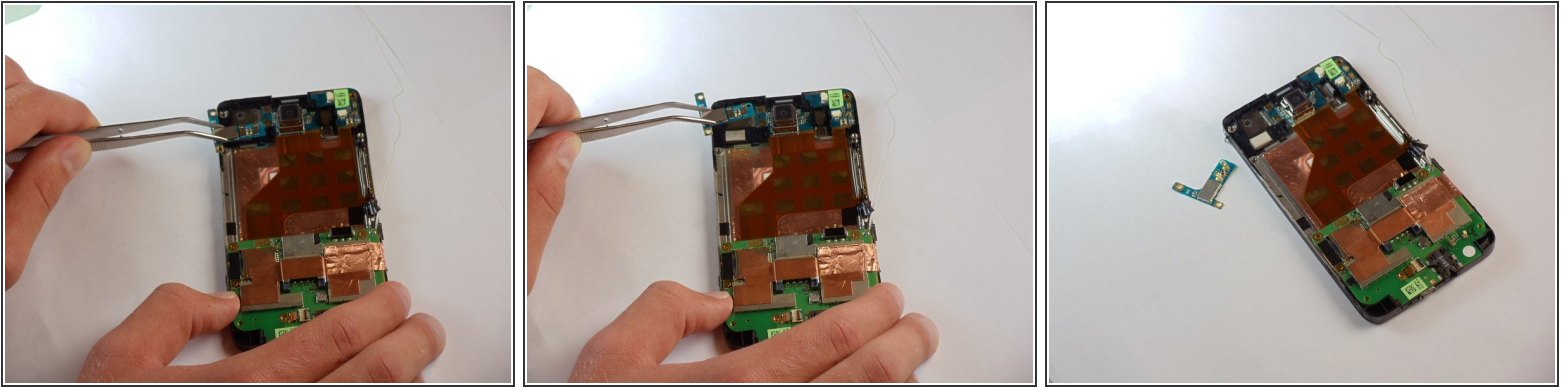
- Remember peeling back part of that big sticker in the middle? Now you get to take it all the way off.
- This may take some time, and the use of the tweezers, but keep at it until the whole sticker is off.

Step 14



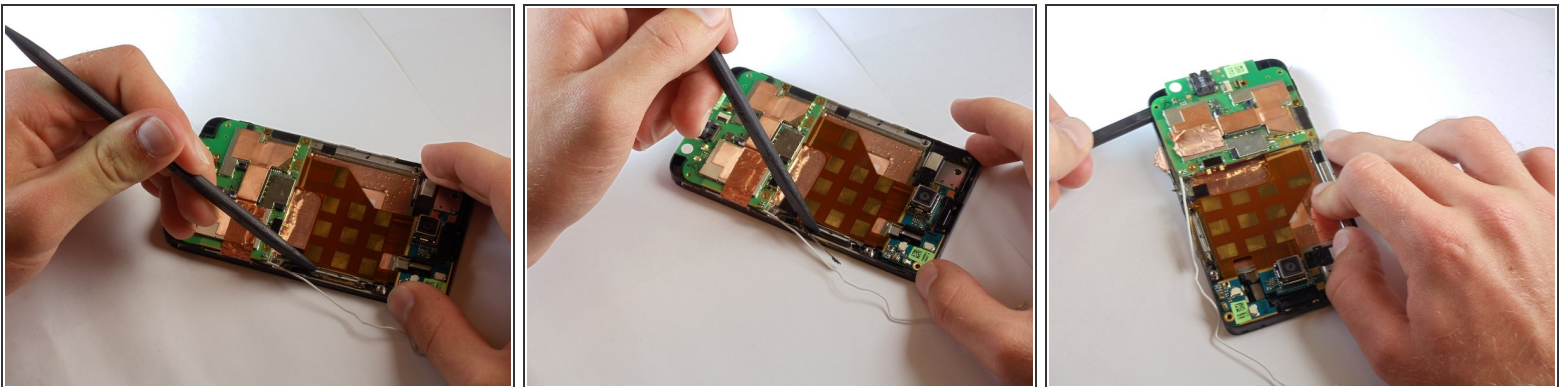
- Now find the GPS board in the upper left hand corner of the phone.
- Disconnect the white cable from its socket on the motherboard.
- ⓘ The cable does not need to be unplugged from the main bottom board.
- ★ This cable is connected to the underside of the bottom board. If it is detached, be sure to reconnect it before reassembling the phone.

Step 15



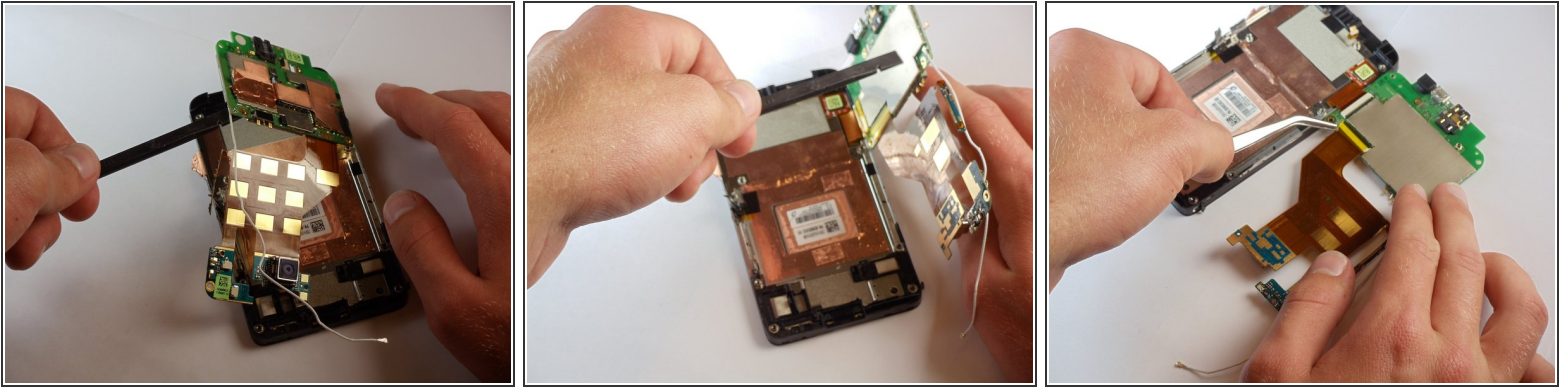
- If this step does not progress easily, check to see that there are no screws still holding the board in place.
- With the cable removed, pop the GPS board out of the phone using tweezers.

Step 16



- Using a spudger, begin to pry the copper colored board in the middle away from the phone to loosen it.
- Also pry the small piece that runs under where the volume selector is on the full phone.

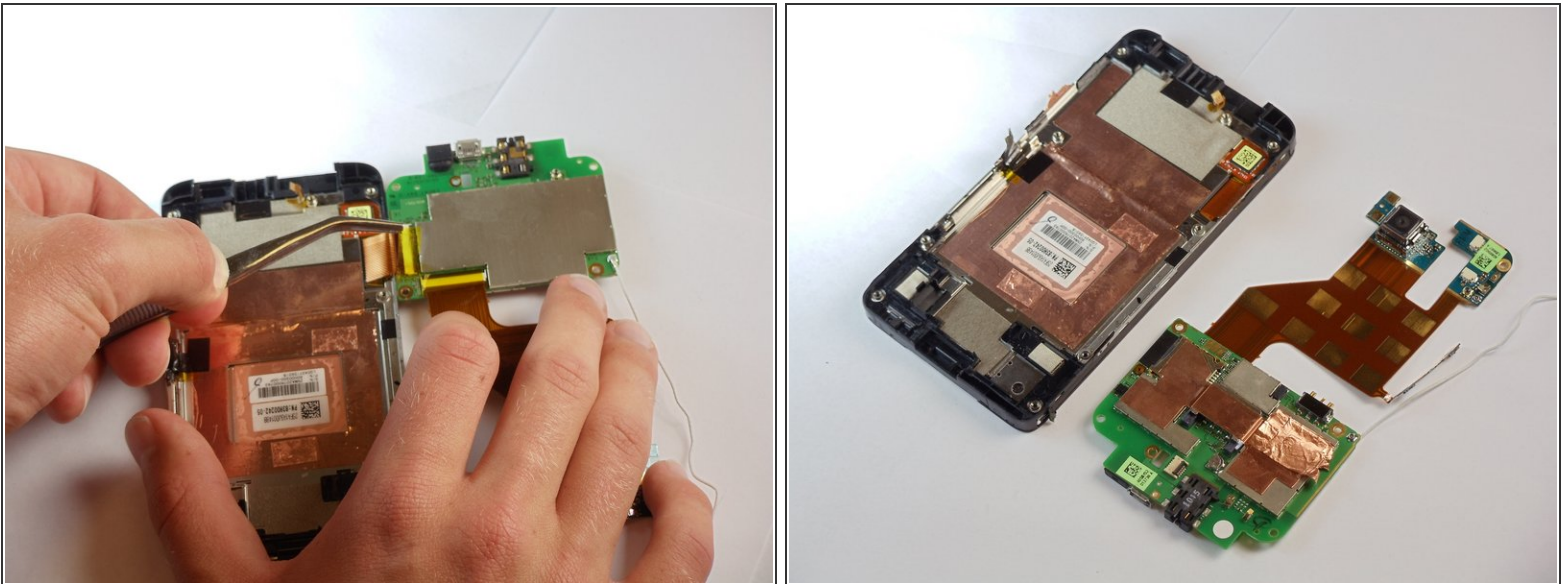
Step 17



⚠ There is a connector cable under the main board, so do not pull it all the way off right away.

- Gently pop both the top and bottom boards off of the phone, and turn them over to the left

Step 18



- With the back of the main board exposed, flip up the little brown lever at the end of the connector and unplug the final cable that connects it to the main board.

To reassemble your device, follow these instructions in reverse order.