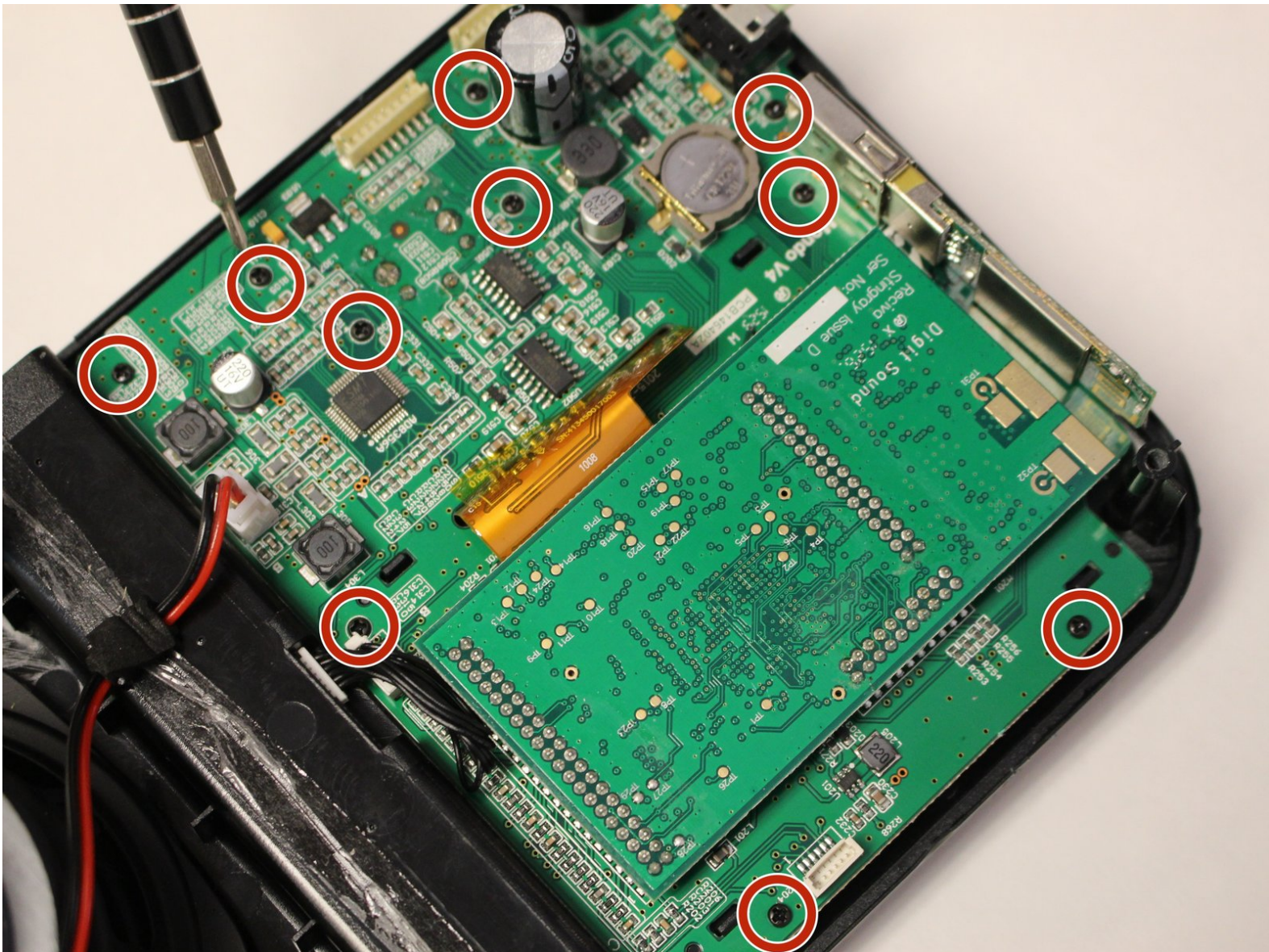




# Grace Digital Mondo Display Cover Replacement

Disassemble and replace a damaged glass for the Grace Digital MONDO's display.

Written By: Nathaniel Brabham



---

## INTRODUCTION

The Grace Digital MONDO is a fairly easy device to deconstruct. The replacement of a display glass includes mainly removing screws, so, as long as you're content on the whole "lefty loosey, righty tighty" phrase, you should be well off for this guide.

---

### TOOLS:

- [Phillips #1 Screwdriver](#) (1)
  - [Metal Spudger](#) (1)
  - [Spudger](#) (1)
-



## Step 1 — Front Panel



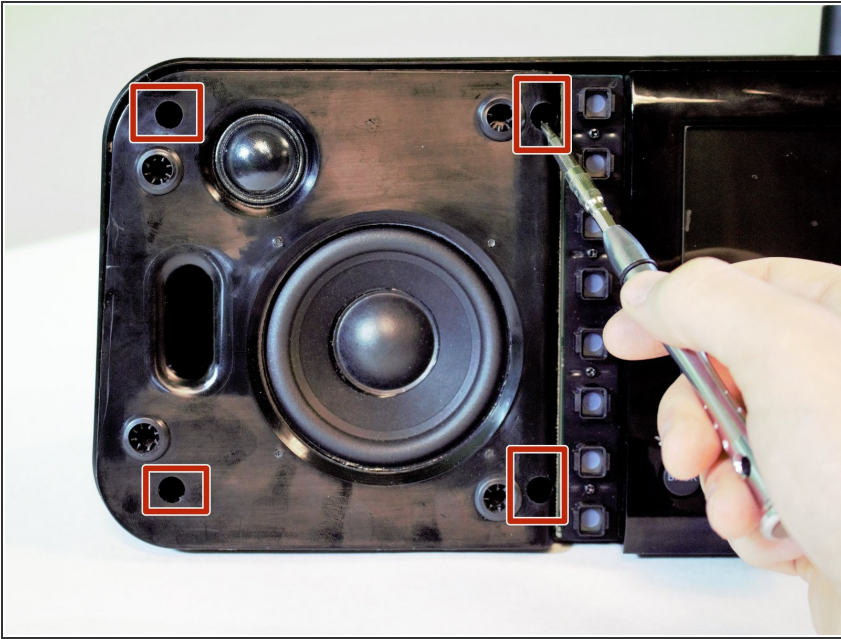
- Remove (2) screws (14 mm) with a PH1 screwdriver on the device.
- There is one screw on the back left, and another just below it on the bottom of the device.

## Step 2



- Use a plastic spudger to remove the front preset selection buttons.
  - ⓘ We recommend you remove all of them for easier access.
- Gently reach underneath and pull off the mesh speaker cover. It only clips in so don't worry about breaking anything.

### Step 3



- Remove (4) screws (14 mm) with a PH1 screwdriver on the front panel by the speaker.

⚠ Be careful with these screws, as they can be stripped easily.

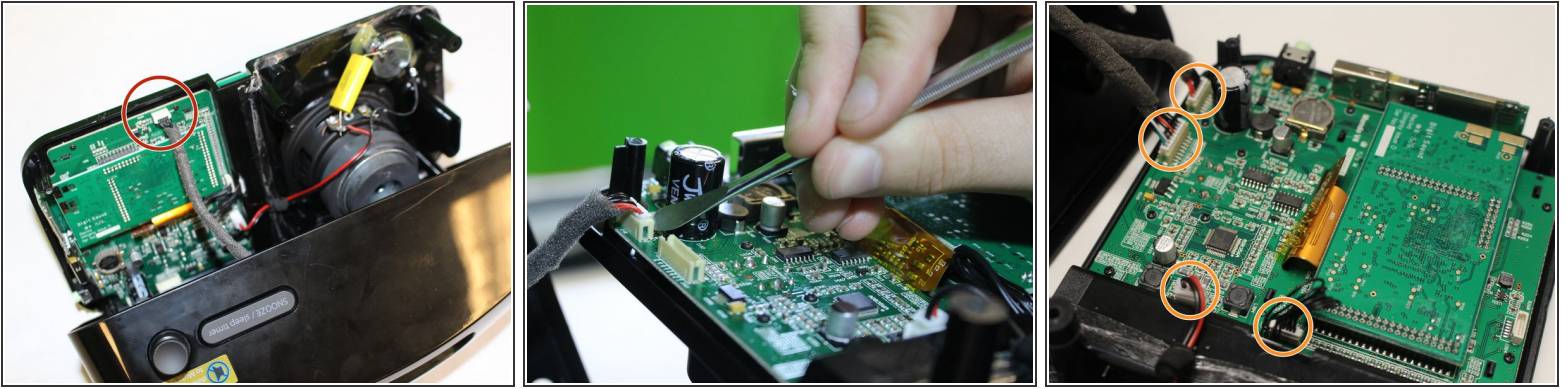
### Step 4



- Move the metal spudger around the front panel to remove any adhesive attaching the front panel to the device.
- Pull apart the front panel from the device with help from the metal spudger.

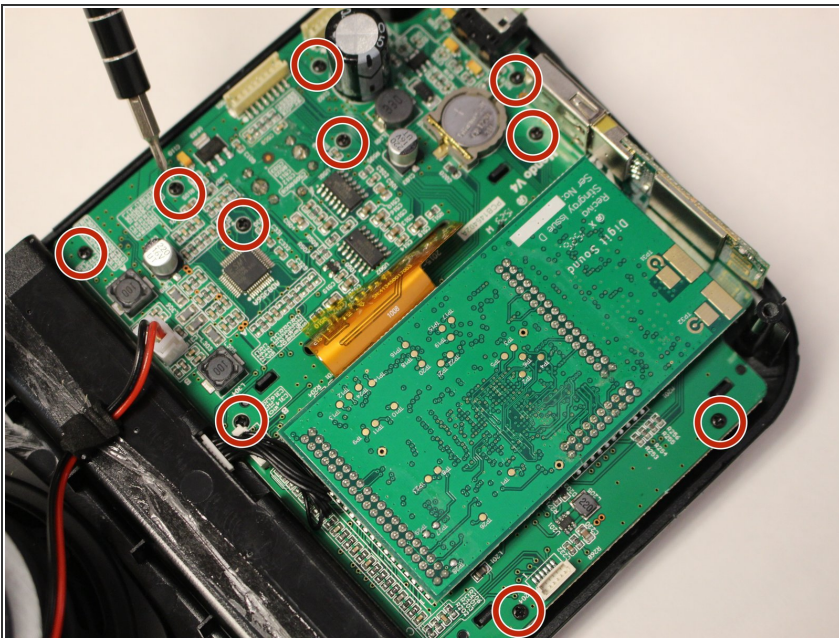


## Step 5



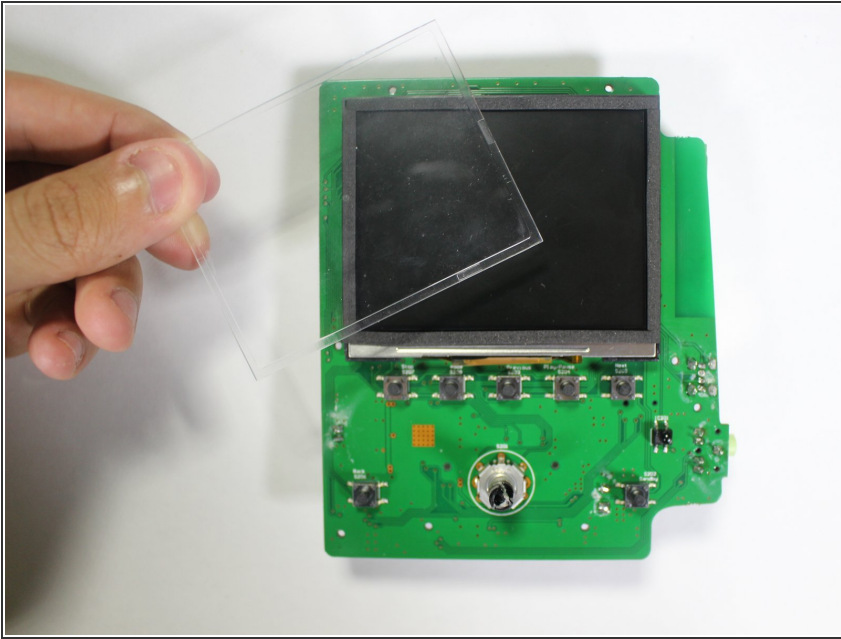
- Detach a pin connector at the top of the device using a metal spudger to open up the inner components.
- Detach (4) pin connectors inside using a metal spudger to separate the front panel from the rest of the device.

## Step 6 — Display Cover



- Remove (10) screws (7 mm) with a PH1 screwdriver on the motherboard.

## Step 7



- Separate the display and motherboard from the front panel of the device.
- Remove the display glass.

To reassemble your device, follow these instructions in reverse order.