



# Nintendo 3DS Circle Pad Joystick Replacement

Circle pad joystick prerequisite.

Written By: David Hodson



---

# INTRODUCTION

Circle pad joystick prerequisite.



## TOOLS:

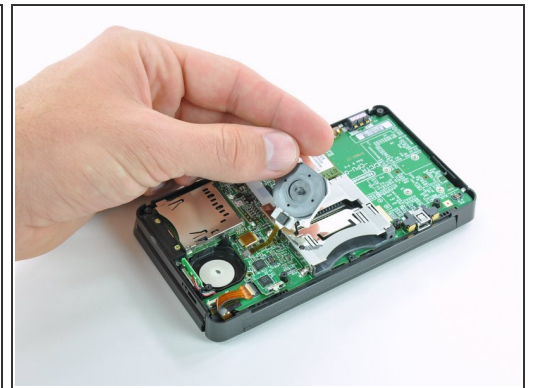
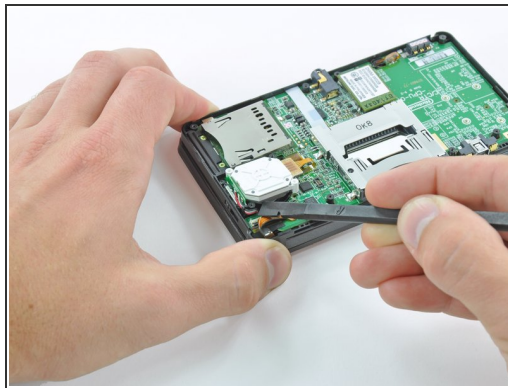
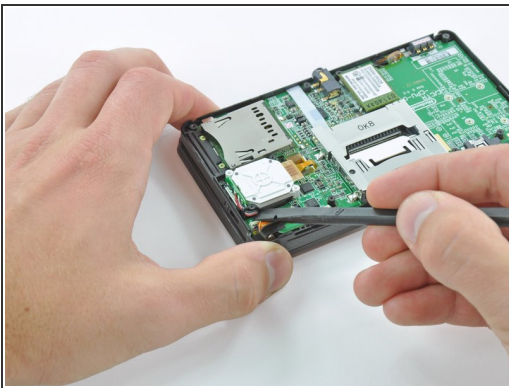
- [iFixit Opening Tools](#) (1)
  - [Spudger](#) (1)
  - [Phillips #00 Screwdriver](#) (1)
-

## Step 1 — Circle Pad Joystick



- Remove the two 7.7 mm Phillips screws securing the back of the Circle Pad to the motherboard.

## Step 2



- Use the flat end of a spudger to pry the back of the Circle Pad off the motherboard.
- Lift the Circle Pad joystick off the motherboard and lay it on its back so that the ribbon cable connector is accessible.



### Step 3

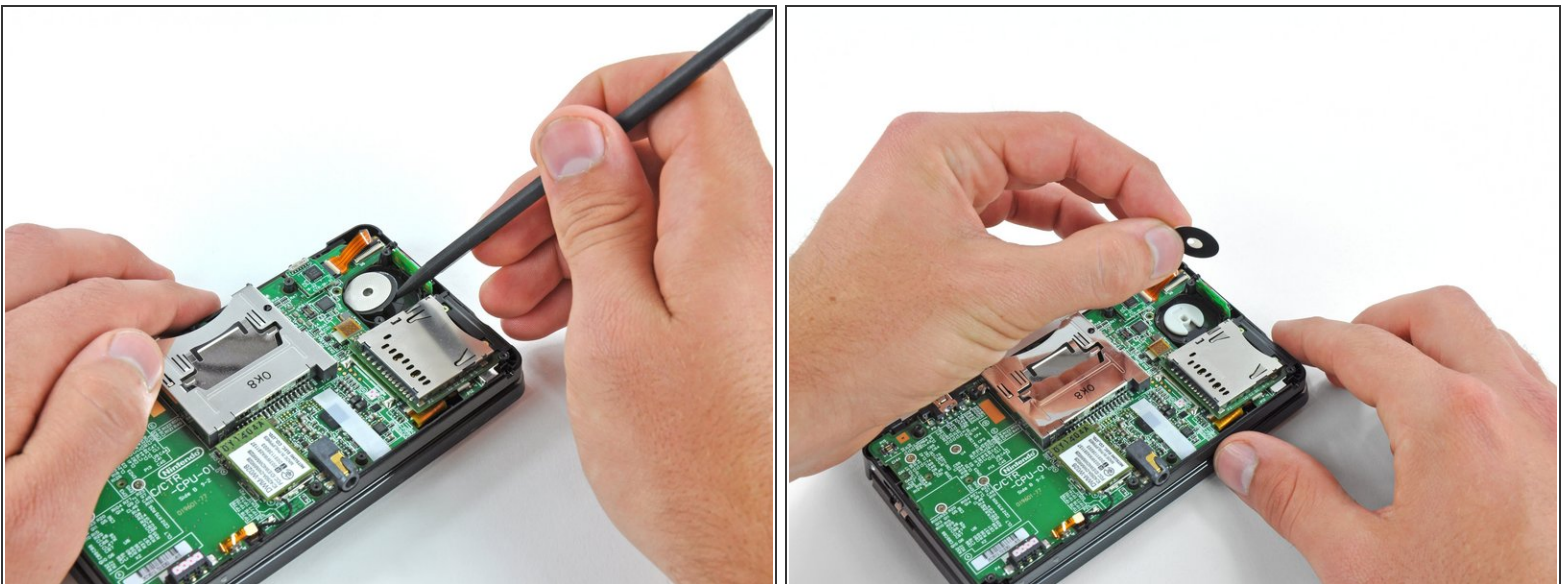


- Use the flat end of a spudger or your fingernail to flip up the retaining flap on the Circle Pad ribbon cable ZIF socket.

⚠ Be sure you are prying up on the hinged retaining flap, **not** the socket itself.

- Lift the Circle Pad joystick off the motherboard.

### Step 4



**i** To decrease the chance of losing it during repairs, you may want to remove the two thin pads underneath the Circle Pad joystick.

- Use a spudger or screwdriver to lift the pads up and remove them from the device.

To reassemble your device, follow these instructions in reverse order.