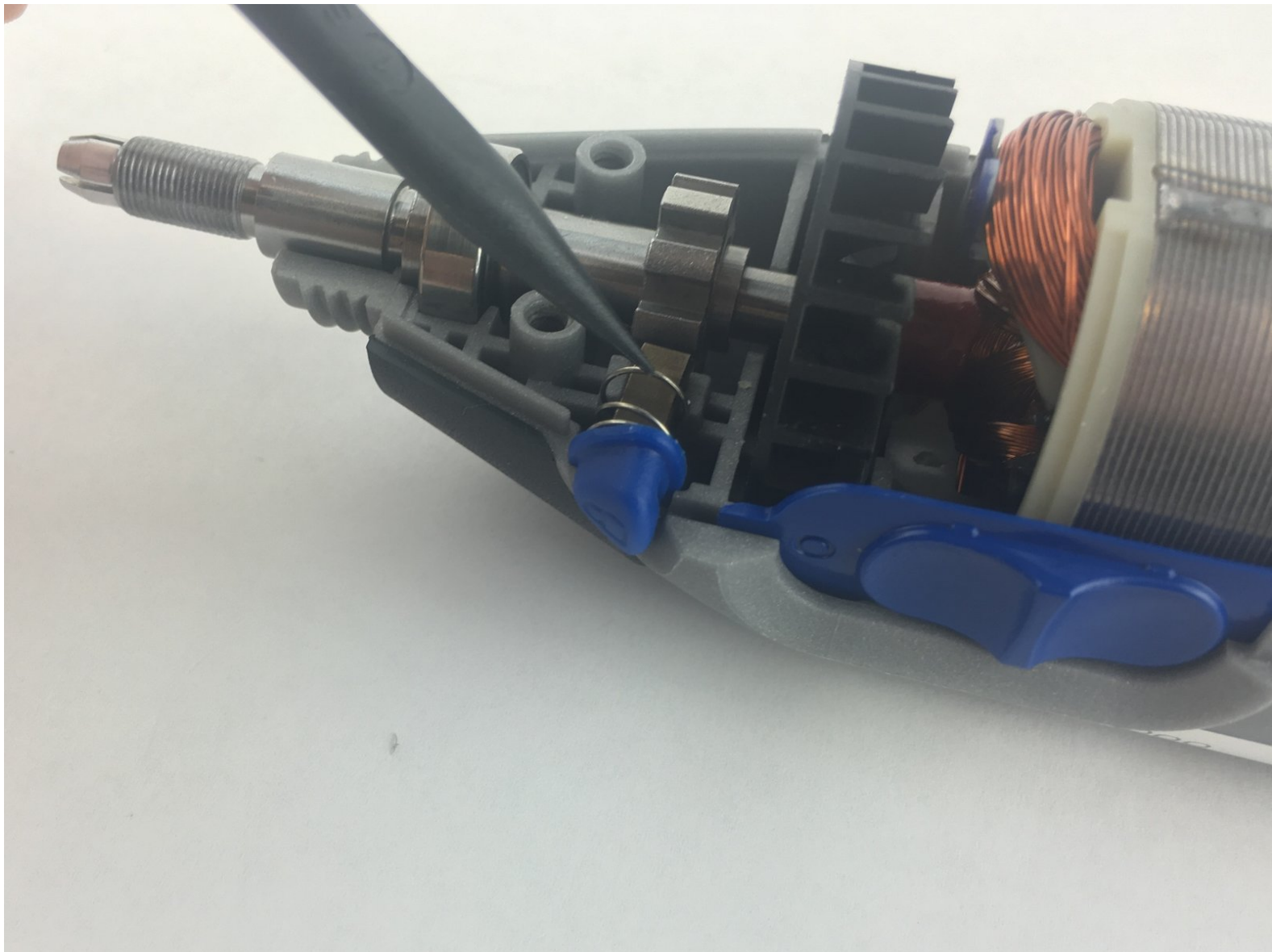




# Dremel 4000 Shaft Lock Pin Replacement

This guide will detail how to remove and replace the shaft lock pin on the Dremel 4000.

Written By: John Cobb



## INTRODUCTION

This is likely the simplest repair possible for this device. Simply access the shaft lock pin after opening the case.



### TOOLS:

- [T15 Torx Screwdriver](#) (1)
- [Flathead 3/32" or 2.5 mm Screwdriver](#) (1)
- [iFixit Opening Tools](#) (1)



### PARTS:

- [Shaft Lock Pin](#) (1)

## Step 1 — Back Case



- Start by removing the housing cap by unscrewing it.
- Next, unscrew the now exposed collet nut while holding down the shaft lock button.
- i To remove the collet nut, you may need to use the small open-end wrench provided with the Dremel.

## Step 2



- Using your hands, carefully remove hanger from casing.

## Step 3



- Remove the brush caps (one on each side) by using a flathead screwdriver bit.
- ⓘ The brush caps are spring loaded.

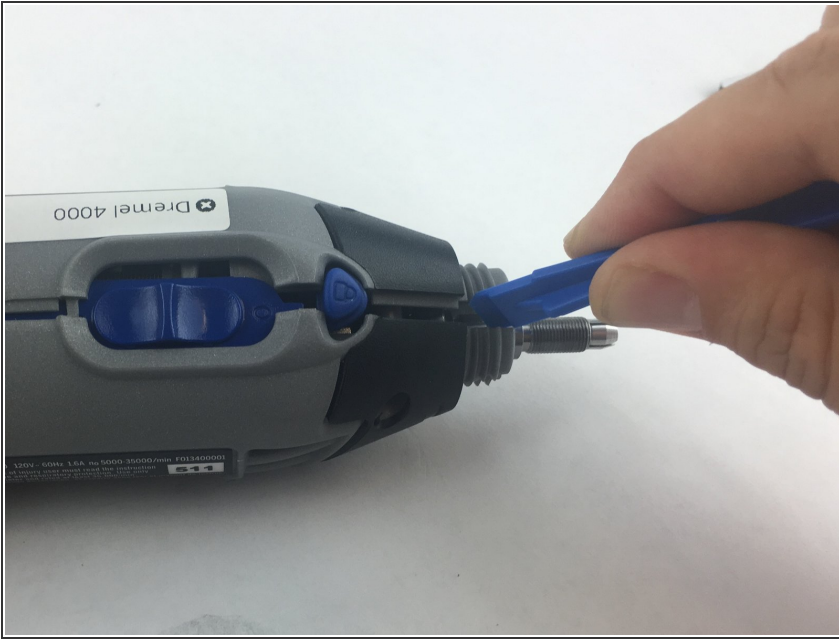
## Step 4



- Using the Torx 15 screwdriver tip, remove the 5 screws (12.5 mm) that hold the casing together.

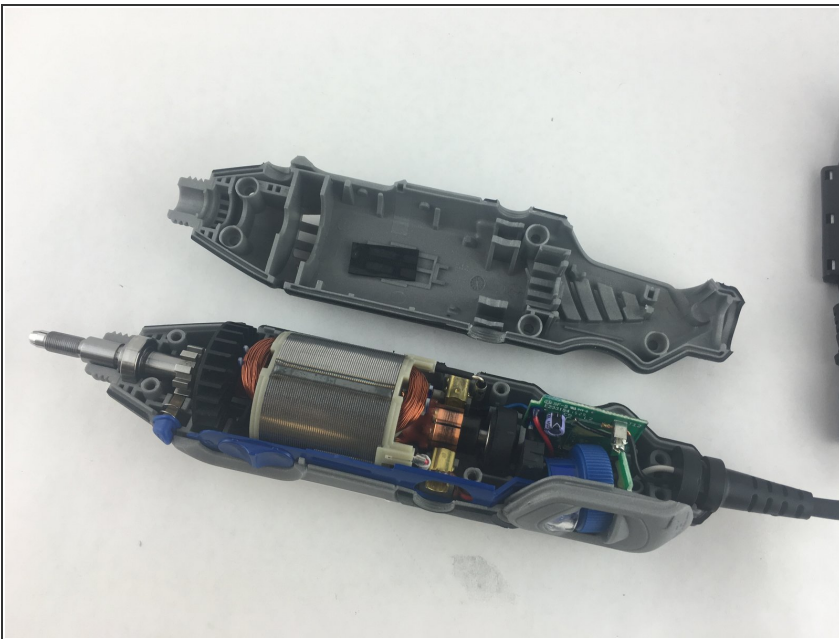


## Step 5



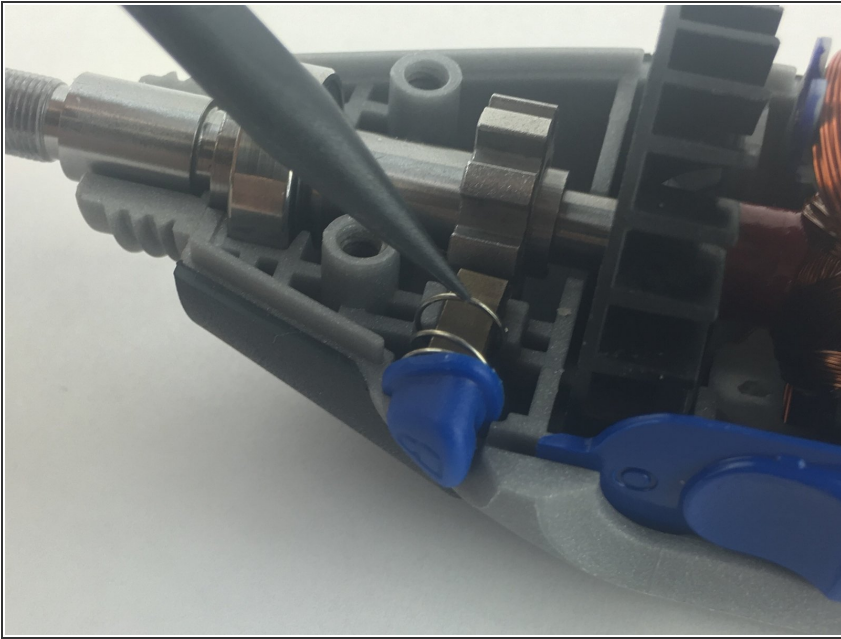
- Use a plastic opening tool to gently wedge apart the hard plastic threads.

## Step 6



- Use your hands to carefully remove the back casing so that none of the components fall out.

## Step 7 — Shaft Lock Pin



- If the shaft lock pin is not engaging the rotary gear, or if the spring is missing or damaged, it will need to be replaced.
- Remove the damaged shaft lock pin and spring by hand.
- ★ Place new shaft lock pin so that the spring functions and the lock engages the rotary gear.

To reassemble your device, follow these instructions in reverse order.