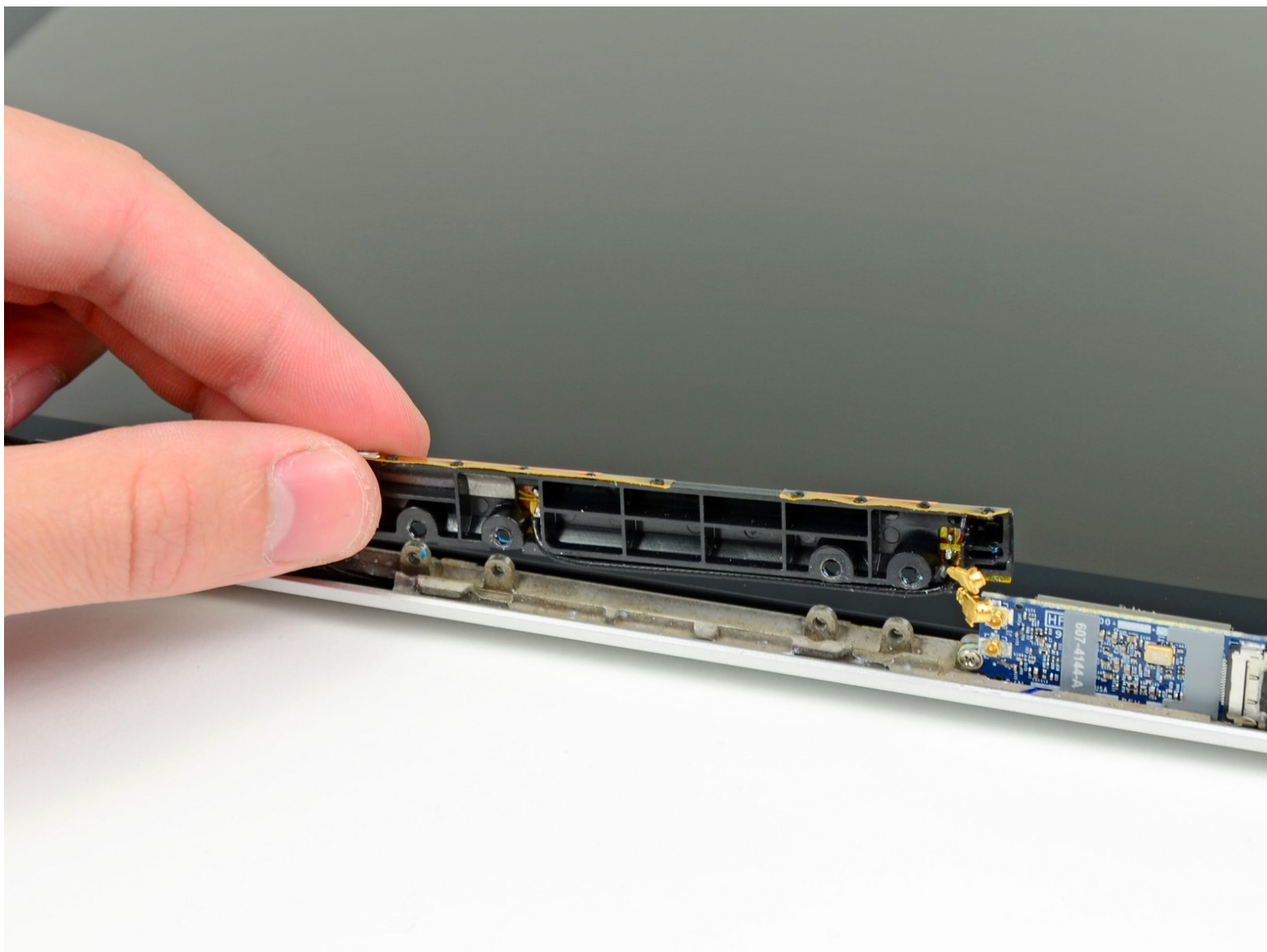




# MacBook Pro 13" Unibody Mid 2009 AirPort Antenna Replacement

Replace the AirPort antenna assembly in your MacBook Pro 13" Unibody Mid 2009.

Written By: Andrew Bookholt



---

# INTRODUCTION

Use this guide to replace the AirPort antenna assembly.



## TOOLS:

- [Phillips #00 Screwdriver](#) (1)
  - [Spudger](#) (1)
  - [T6 Torx Screwdriver](#) (1)
-

## Step 1 — Remove the lower case screws



- Remove the following 10 screws securing the lower case to the MacBook Pro 13" Unibody:
  - Seven 3 mm Phillips screws.
  - Three 13.5 mm Phillips screws.

## Step 2 — Lift the lower case away



- Slightly lift the lower case and push it toward the rear of the computer to free the mounting tabs.



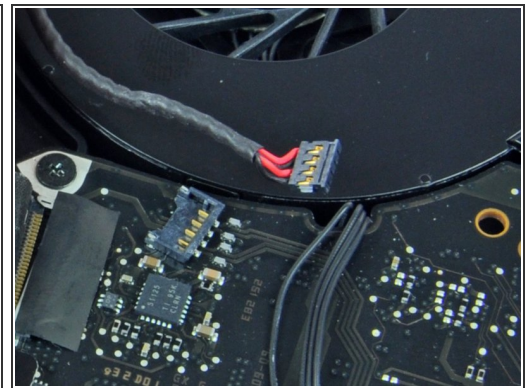
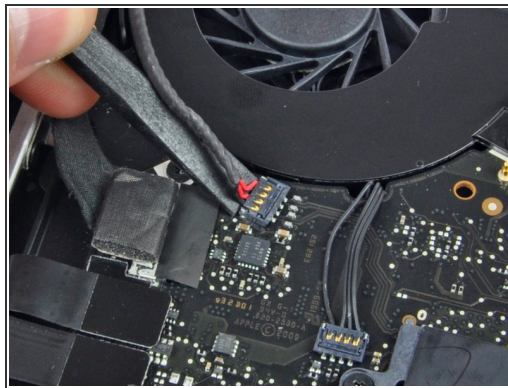
## Step 3 — Battery



**⚠** For precautionary purposes, we advise that you disconnect the battery connector from the logic board to avoid any electrical discharge.

- Use the flat end of a spudger to lift the battery connector up out of its socket on the logic board.

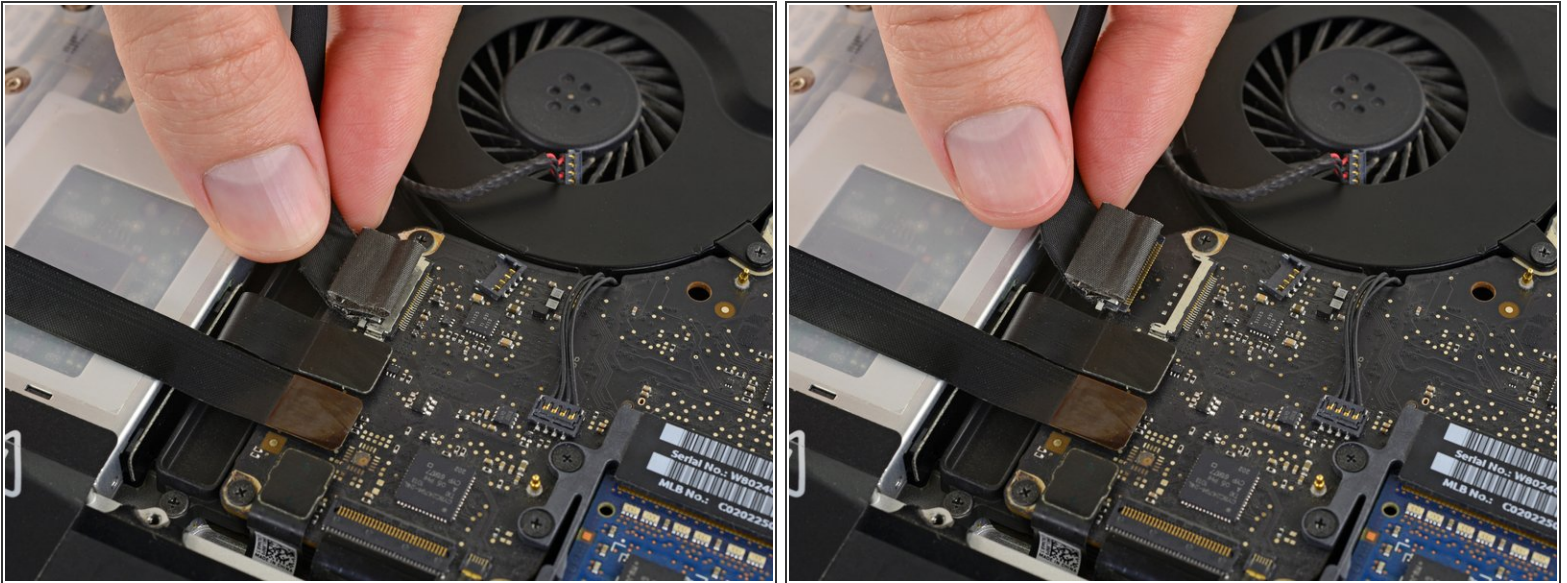
## Step 4 — Display



- Use the flat end of a spudger to pry the subwoofer/right speaker cable connector up off its socket on the logic board.

**⚠** Be very careful to pry under the connector as shown, and not under the socket itself. Otherwise you may accidentally separate the socket from the logic board.

## Step 5



- Disconnect the camera cable by sliding it horizontally out of its socket.

**⚠** Pull the cable parallel to the surface of the logic board, in the direction of the optical drive. Do **not** pull straight up, or you will destroy the connector.

- If you see a [small plastic retainer](#) stuck to the logic board that prevents the camera cable from sliding out, peel it up carefully from the logic board. Apply a little heat from a hair dryer or heat gun if necessary to help soften the adhesive holding it in place. **Do not** attempt to forcibly disconnect the cable with the retainer in place.
- If you still have trouble, use the point of a spudger to push at each side of the connector and ["walk" it slowly from its socket](#).

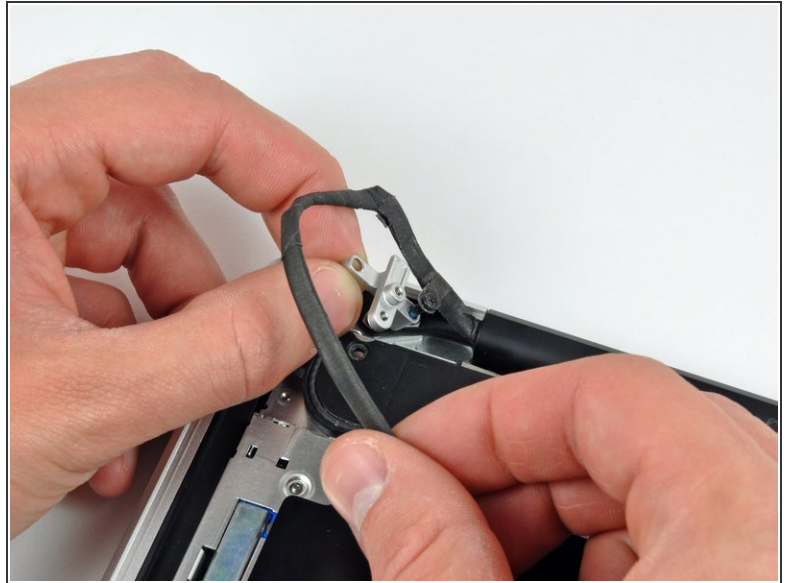
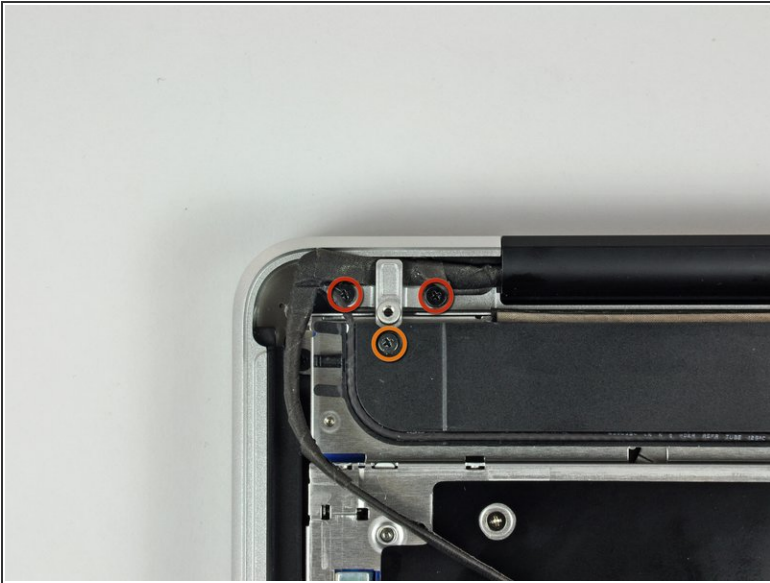
## Step 6



- De-route the camera data cable from the channel in the optical drive.

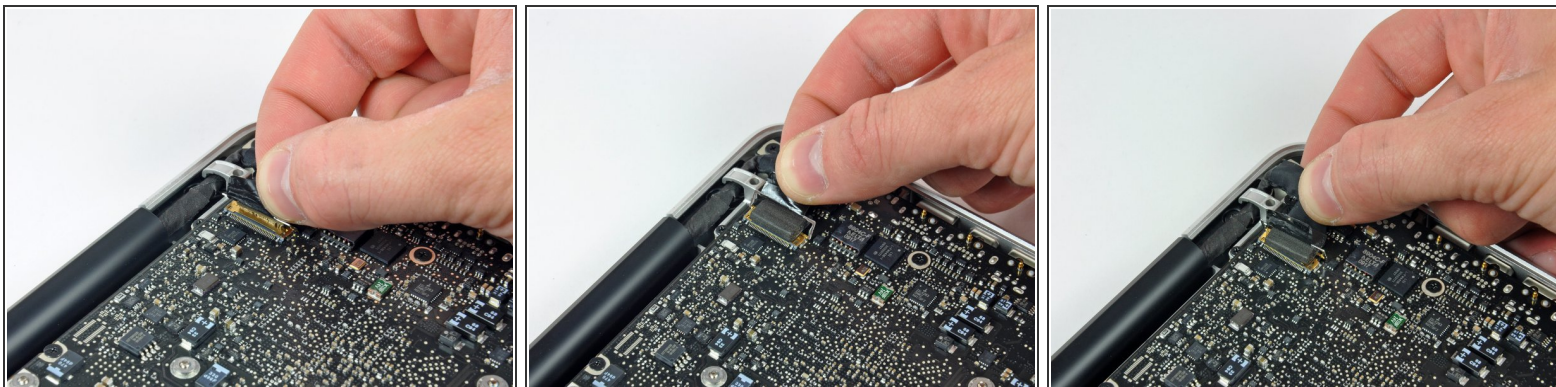


## Step 7



- Remove the following screws securing the camera data cable and right speaker to the upper case:
  - Two 8 mm Phillips screws.
  - One 4mm Phillips screw.
- ⓘ One of the 8 mm Phillips screws will likely remain captive in the camera cable ground loop.
- Slide the camera cable bracket out from under the subwoofer and remove it from the computer.

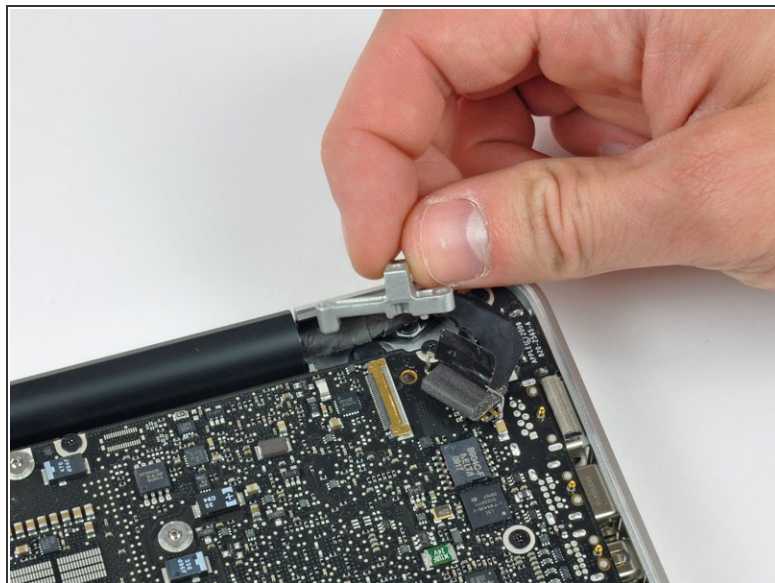
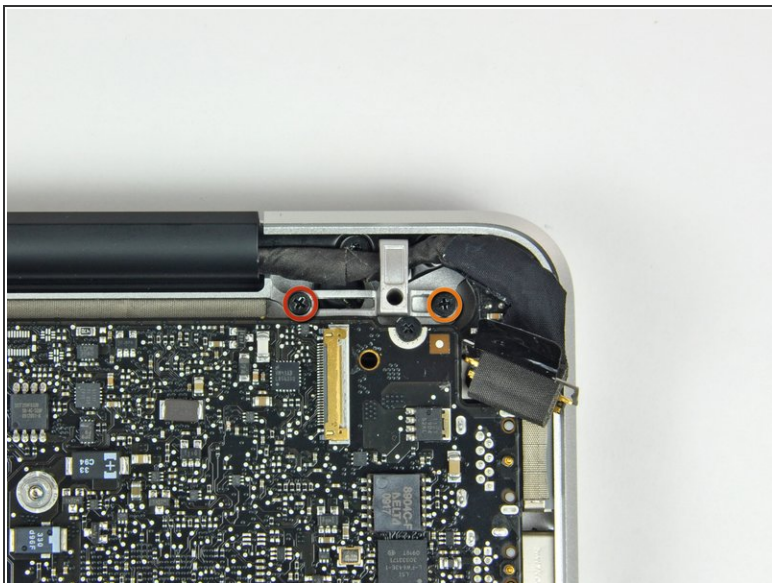
## Step 8



- Grab the plastic pull tab secured to the display data cable lock and rotate it toward the DC-in side of the computer.
- Pull the display data cable connector straight away from its socket.
- ⓘ Make sure to pull the connector straight away and not straight up from its socket.

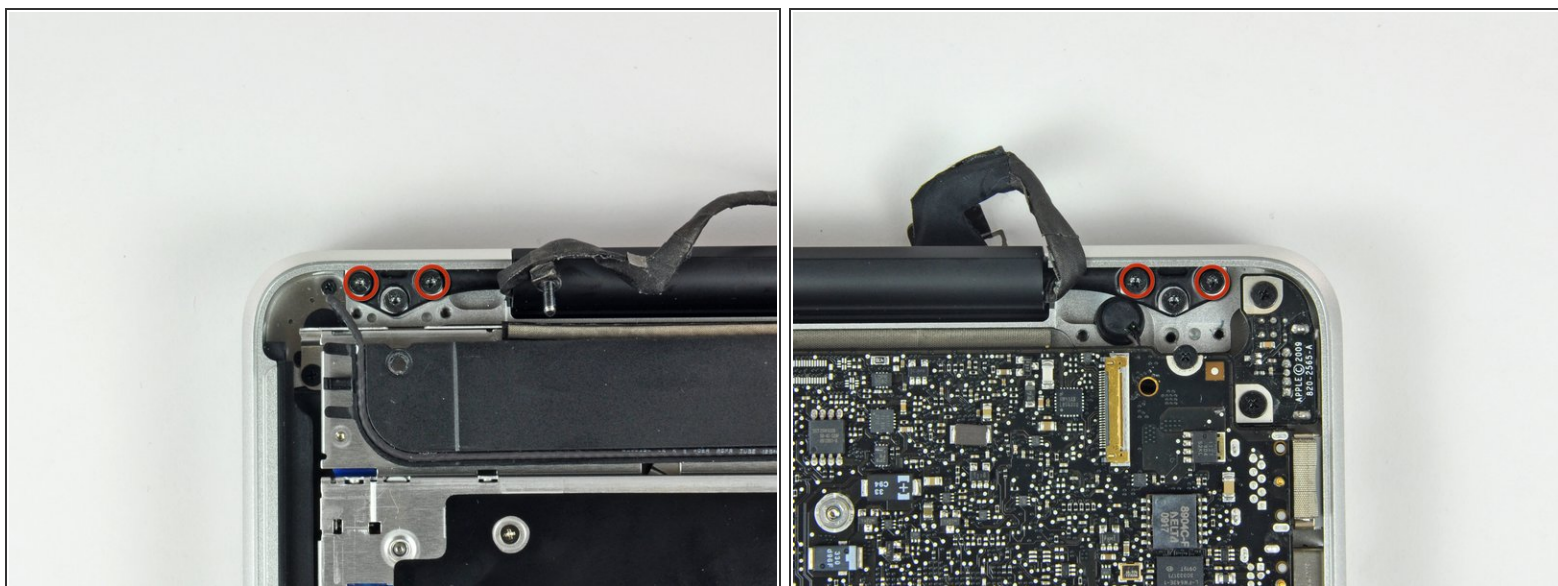


## Step 9



- Remove the following two screws securing the display data cable bracket to the upper case:
  - One 7 mm Phillips screw.
  - One 5 mm Phillips screw.
- Lift the display data cable bracket out of the upper case.

## Step 10



- Use your Torx driver to remove the two outer 6.5 mm screws securing each of the two display brackets to the upper case (4 screws total).
- ⓘ Mid 2009 models require a T6 Torx driver, while Mid 2010 models require a T8.

## Step 11



- Open your MacBook so the display is perpendicular to the upper case.
- Place your opened MacBook on a table as pictured.
- While holding the display and upper case together with your left hand, use your Torx driver to remove the remaining 6.5 mm screw from the lower display bracket.

## Step 12



**⚠** Be sure to hold the display and upper case together with your left hand. Failure to do so may cause the freed display/upper case to fall, potentially damaging each component.

- Remove the last remaining 6 mm Torx screw securing the display to the upper case.

## Step 13



- Grab the upper case with your right hand and rotate it slightly toward the top of the display so the upper display bracket clears the edge of the upper case.
- Rotate the display slightly away from the upper case.



## Step 14



- Lift the display up and away from the upper case, minding any brackets or cables that may get caught.

## Step 15 — Clutch Cover



- Grab the clutch cover as shown and slide it toward the right side of the display.

 It should move about 1/4" and stop. Don't force it beyond this point.



## Step 16



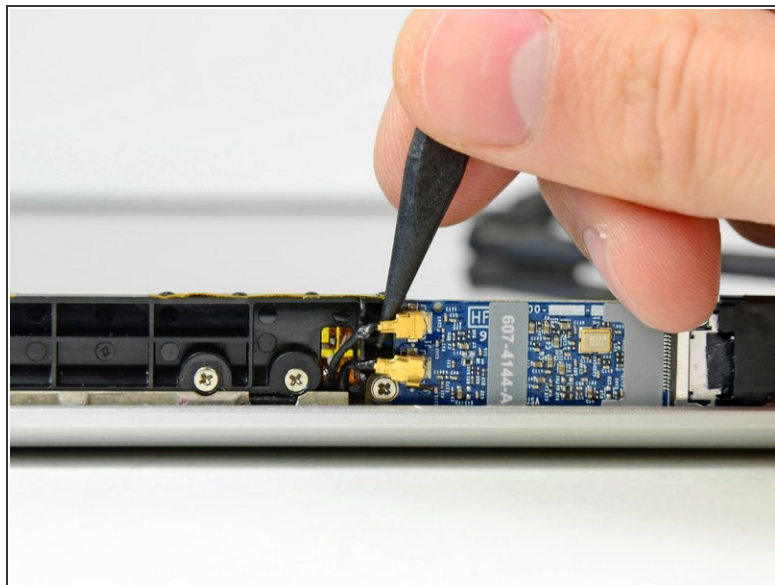
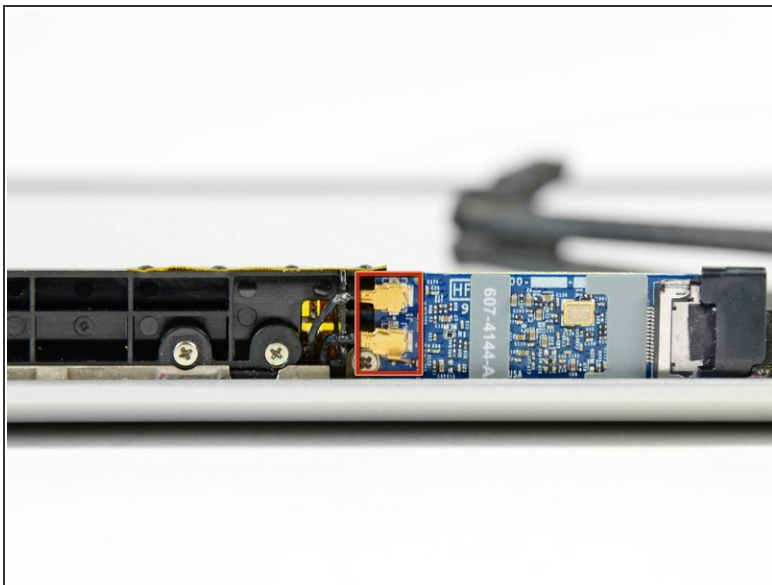
- Gently rock the clutch cover back and forth on its long axis while pulling it away from the display.
- Do this action along the length of the clutch cover until you can lift it off the framework attaching it to the display.

## Step 17



- Remove the clutch cover from the display.

## Step 18 — AirPort Connectors



- Use the tip of a spudger to pry both AirPort antenna connectors out of their sockets on the AirPort board.

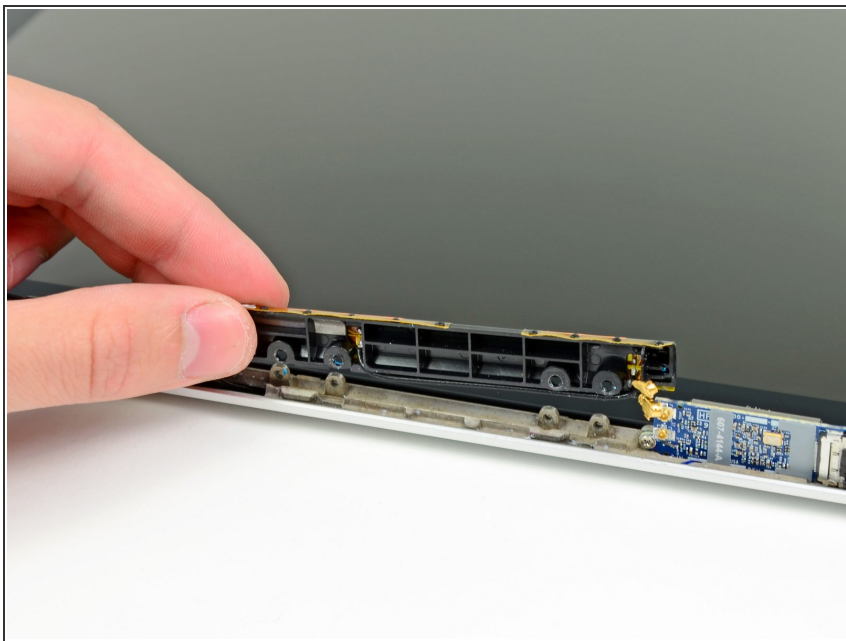
⚠ Be careful not to break the sockets off the AirPort board.

## Step 19 — AirPort Antenna



- Remove the four 3 mm Phillips screws securing the antenna bracket to the display.

## Step 20



- Remove the AirPort antenna from the display, minding the antenna connectors that might get caught.

To reassemble your device, follow these instructions in reverse order.