



Amazon Echo Tweeter Assembly Replacement

This guide demonstrates how to replace the...

Written By: Alexander Albert



INTRODUCTION

This guide demonstrates how to replace the tweeter assembly in the Amazon Echo. Removing the assembly is a prerequisite for replacing the tweeter or woofer.


TOOLS:

Heavy-Duty Spudger (1)


TR10 Torx Security Screwdriver (1)

Step 1 — Power and Speaker Driver Board

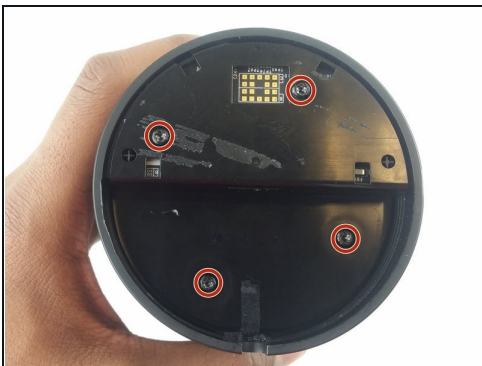


 Power off and unplug your Echo before disassembly. Failure to do so could result in injury or damage to the device.

- Peel off the rubber footing from the bottom of the Echo.

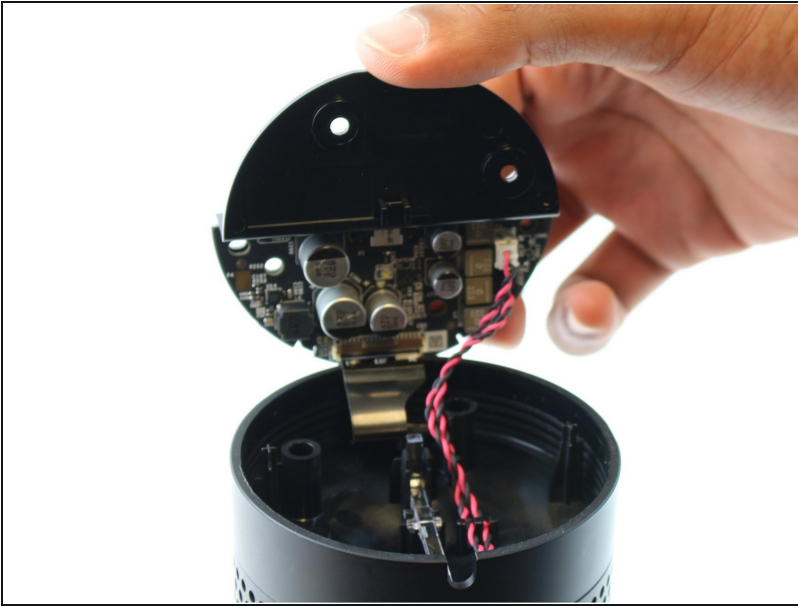
 Do not pull the rubber footing too hard, as it could stretch out of shape. Use a spudger to help remove the foot if you have any trouble.

Step 2



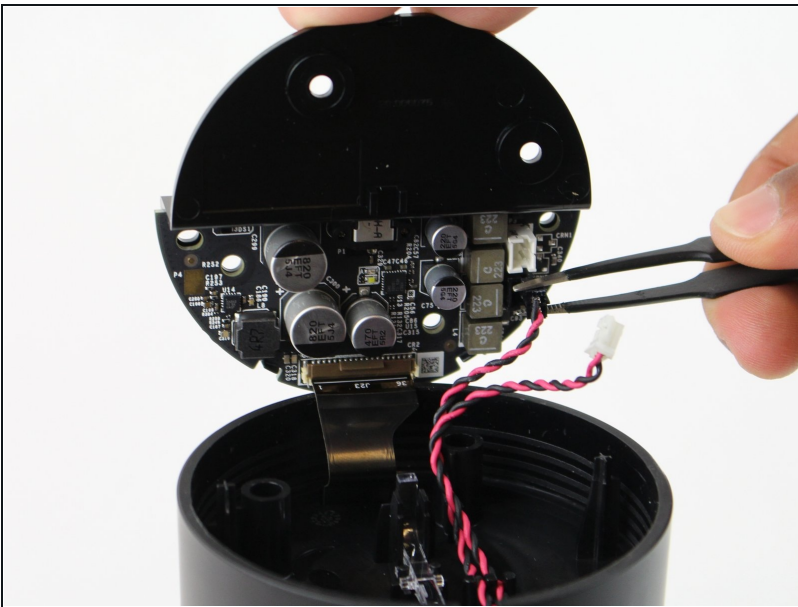
- Remove the four 42.8 mm T10 Torx screws from the bottom of the Echo.

Step 3



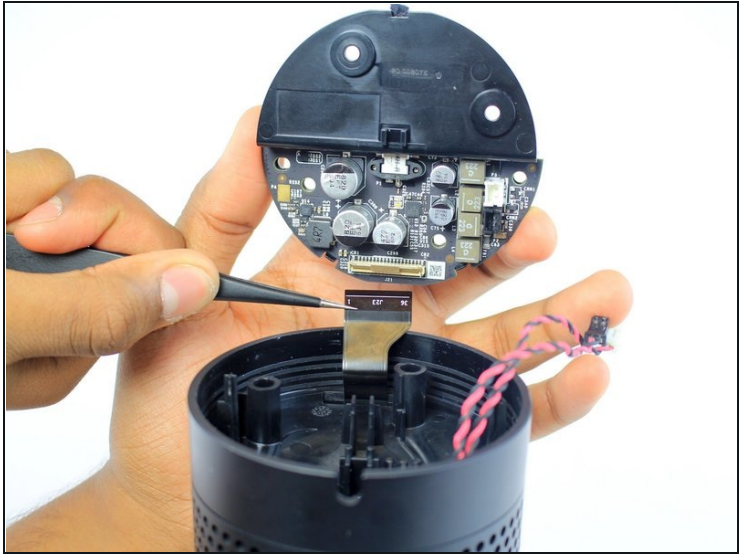
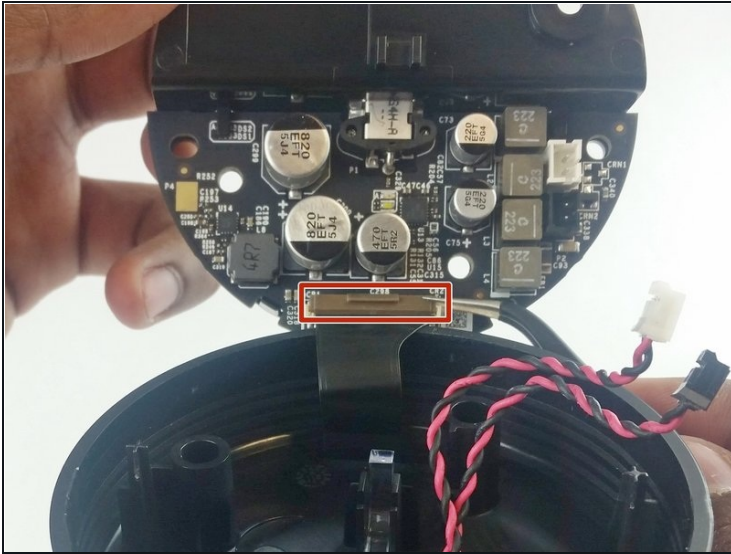
- Slowly lift the plate containing the board. Be careful not to disconnect any of the wires.

Step 4



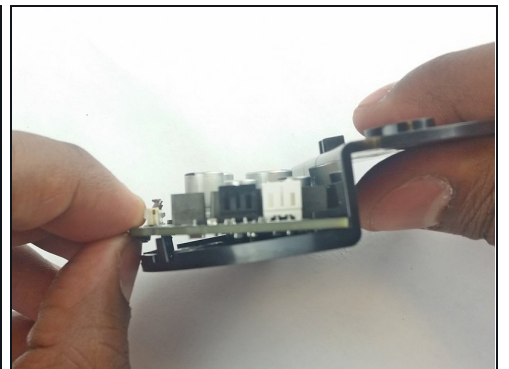
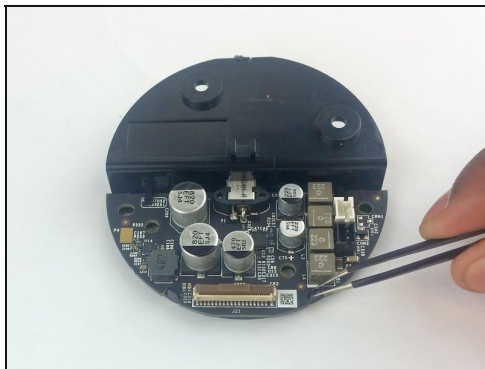
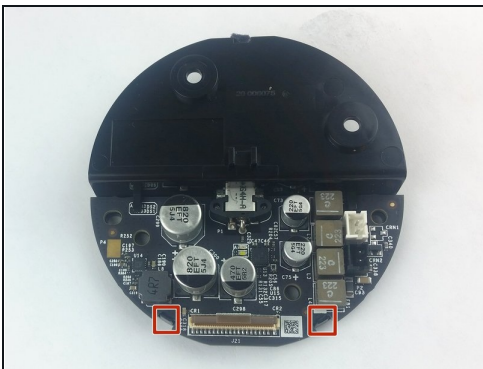
- Using [tweezers](#), carefully disconnect the two red and black cables from their sockets on the board.
⚠ Tugging on the wires may damage the device. Pull from the plastic connectors instead.

Step 5



- Lift the brown plastic latch on the ZIF connector securing the driver board ribbon cable.
- Pull the ribbon cable from its connector. The plate and board should now be free from the Echo.

Step 6



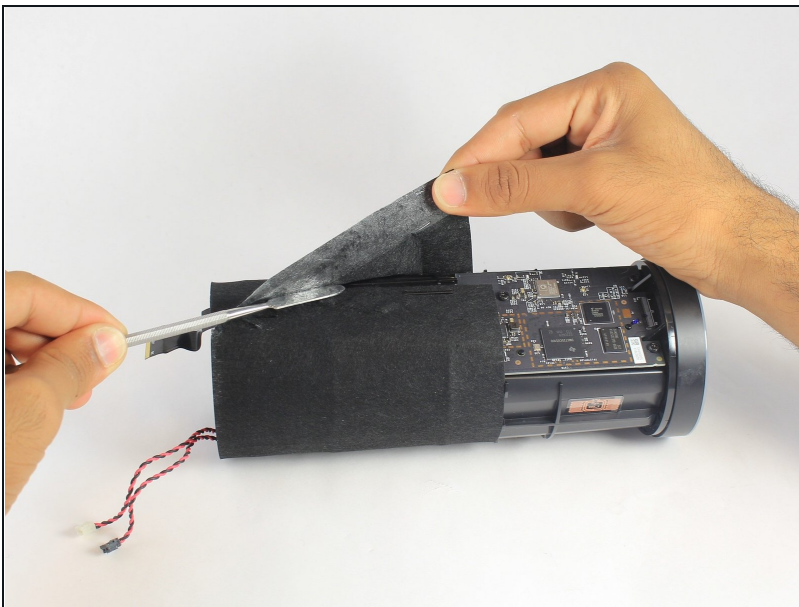
- Using the spudger, pull back the two plastic clips on the plate.
- Lift the board up and pull it away from the plate.

Step 7 — Tweeter Assembly



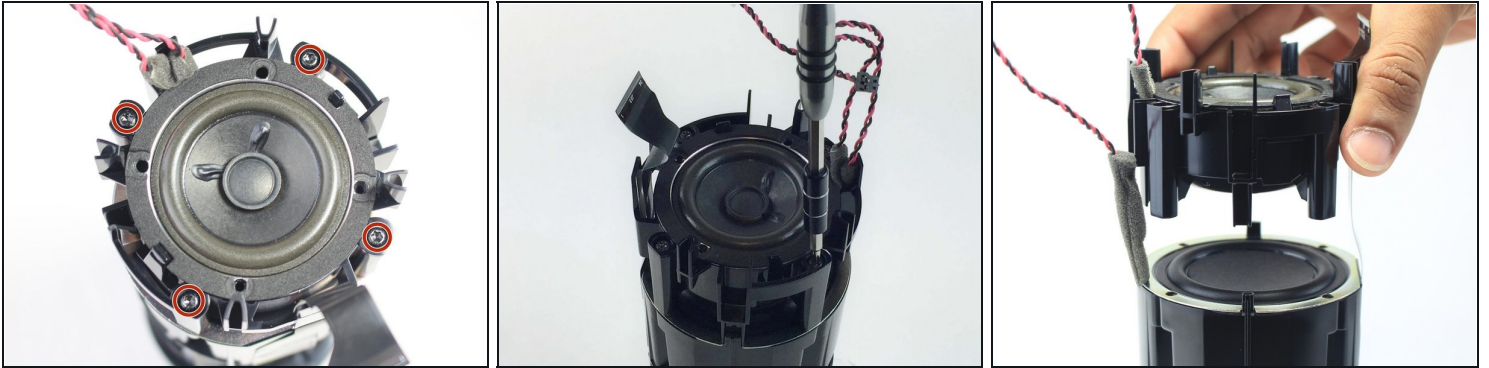
- Remove the plastic plate from the bottom of the device. Then remove the plastic shrouding.

Step 8



- Peel off the black fabric wrapped around the Echo.
⚠ Be careful not to rip the fabric. Use a spudger to help remove the adhesive if you have any trouble.

Step 9



- Remove the four 42.8 mm T10 Torx screws around the tweeter.
- Lift the tweeter and its attached housing from the device.

To reassemble your device, follow these instructions in reverse order.