



Nexus 5X Midframe Replacement

This guide will show you how to remove the midframe from a Nexus 5X.

Written By: Dominik Schnabelrauch



INTRODUCTION

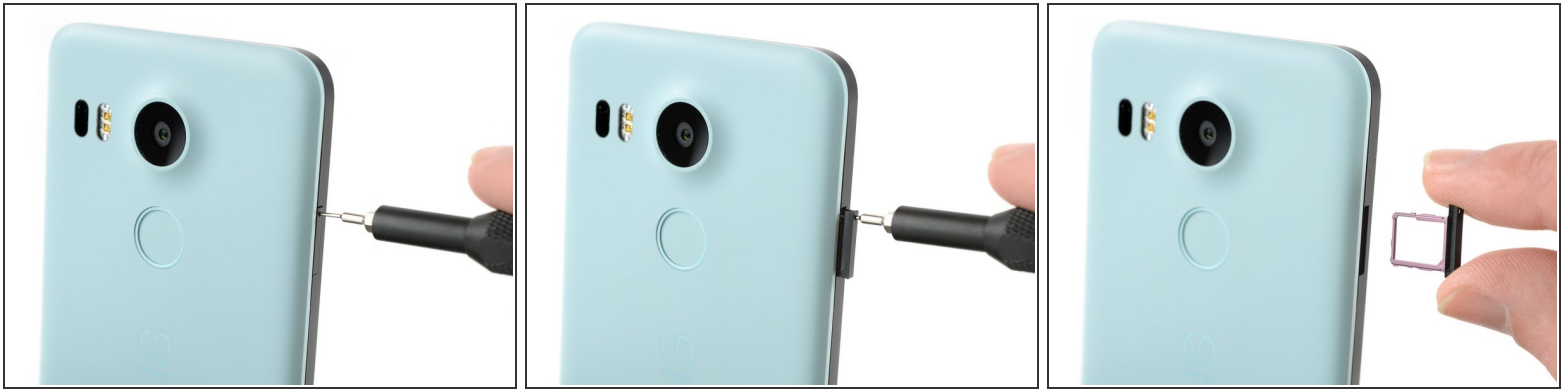
Use this guide to remove and replace the midframe from your Nexus 5X.



TOOLS:

- [SIM Card Eject Tool](#) (1)
 - [iFixit Opening Picks set of 6](#) (1)
 - [Phillips #00 Screwdriver](#) (1)
-

Step 1 — SIM Card Tray



- Insert a SIM card ejection tool into the hole on the SIM card tray, located on the left edge of the phone.
- Press in to eject the SIM card tray.
- Remove the SIM card tray.

Step 2 — Rear Panel



- Place an opening pick in the opening of the SIM card tray slot and twist it sideways to release the first plastic clip that holds the rear panel in its place.
- Slide the opening pick around the top edge of the phone to release the plastic clips that secure the rear panel.

Step 3



- Continue to slide the opening pick around all sides of the phone to release all clips that secure the rear panel.

Step 4



- Tilt the opening pick to lift the rear panel a little bit.
- There are two more plastic clips next to the fingerprint sensor. Release them by gently pulling the rear panel.
- Remove the rear panel.

Step 5 — Midframe



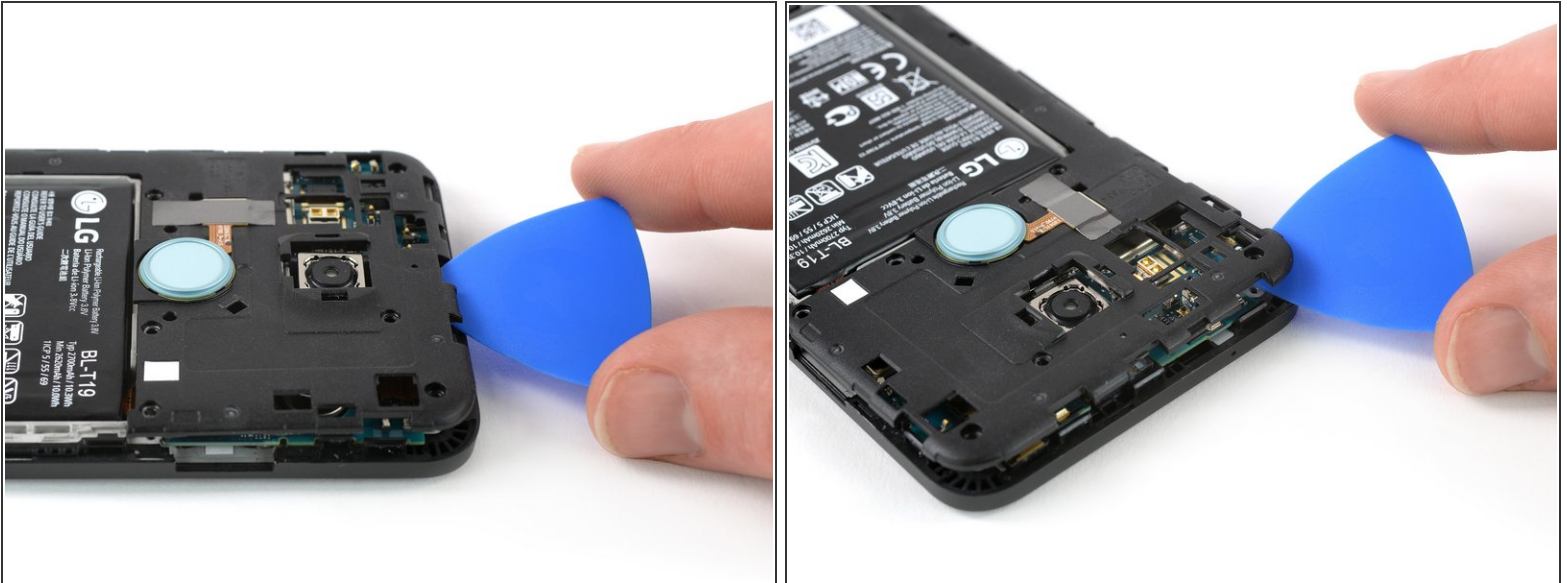
- Remove the ten 3.6 mm Phillips screws that secure the midframe.

Step 6



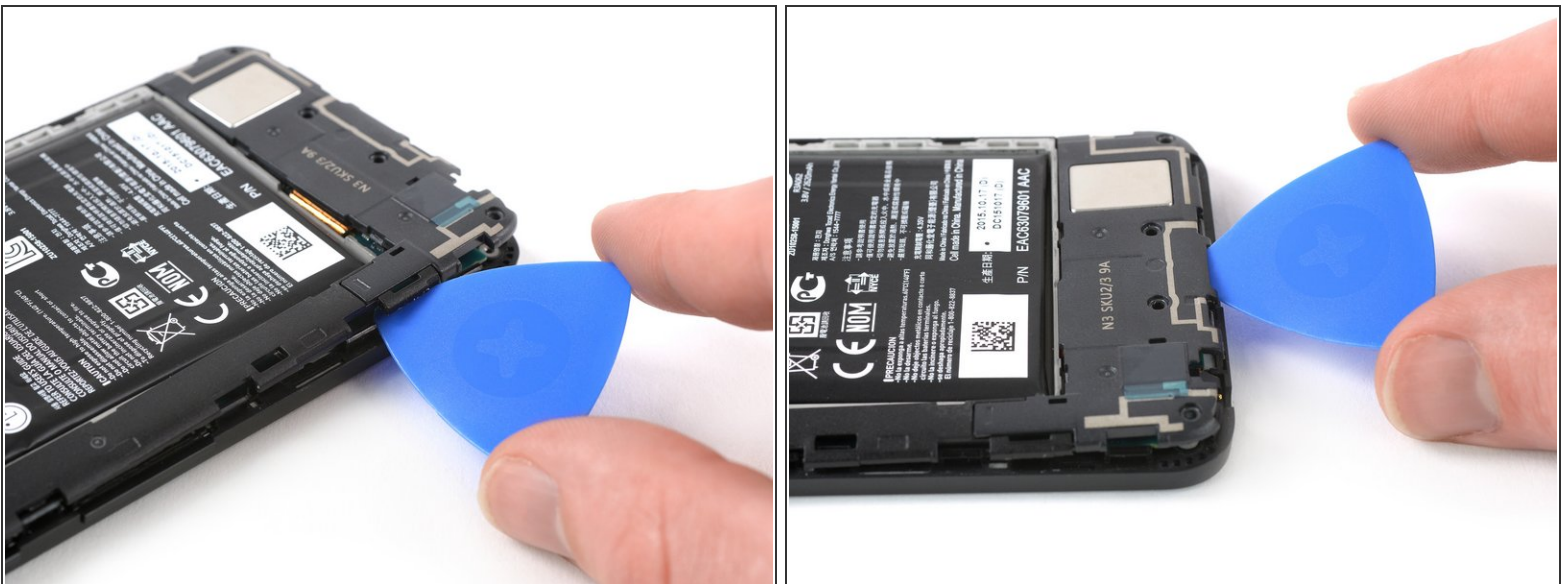
- Insert an opening pick into the SIM card tray slot and twist the opening pick sideways to release the plastic clips.

Step 7



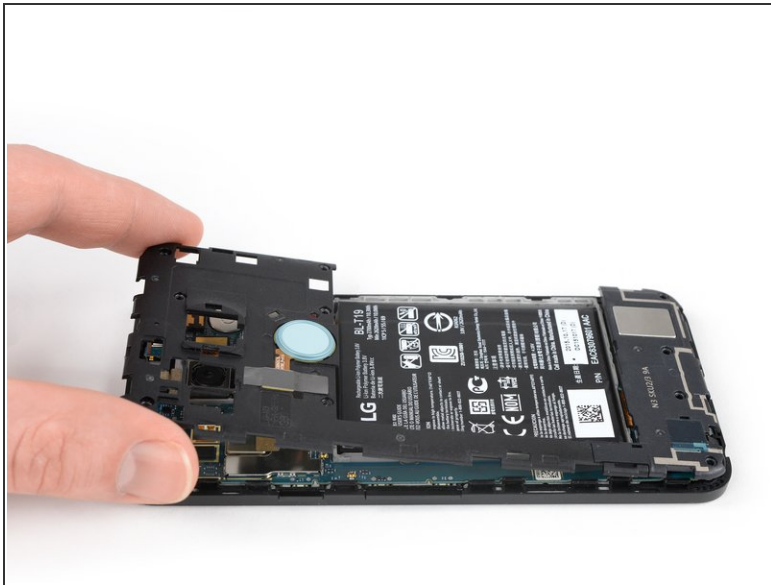
- Continue sliding the opening pick around the upper part of the midframe to release the plastic clips.

Step 8



- Use the plastic pick to pry open the plastic clips on the long edge of the midframe and on the bottom edge.
- ⚠ Make sure the clips on the long edge are released. The midframe is prone to break here if they are not disconnected properly.

Step 9



- Make sure all the clips are free.
- Carefully remove the midframe.

To reassemble your device, follow these instructions in reverse order. If your middle panel is damaged or broken, install the new panel instead.

Take your e-waste to an [R2 or e-Stewards certified recycler](#).

Repair didn't go as planned? Check out our [Nexus 5X Answers community](#) for troubleshooting help.