



Nabi 2 Battery Replacement

This guide shows how to remove and replace the battery of the Nabi 2.

Written By: Michelle



INTRODUCTION

This guide will demonstrate how to remove and replace your Nabi 2's battery. The battery powers your device, and over time your battery may lose its ability to function correctly. There are many reasons to perform this repair, but the most common causes are the device not turning on, and the device not holding a charge. This repair involves the use of a soldering iron; be very careful not to touch the hot end of the iron while it is plugged in. It is recommended to document the order of the battery wires before you detach them so that you can attach the new battery's wires in the correct order.



TOOLS:

- [Phillips #00 Screwdriver](#) (1)
- [iFixit Opening Tools](#) (1)
- [Soldering Iron](#) (1)



PARTS:

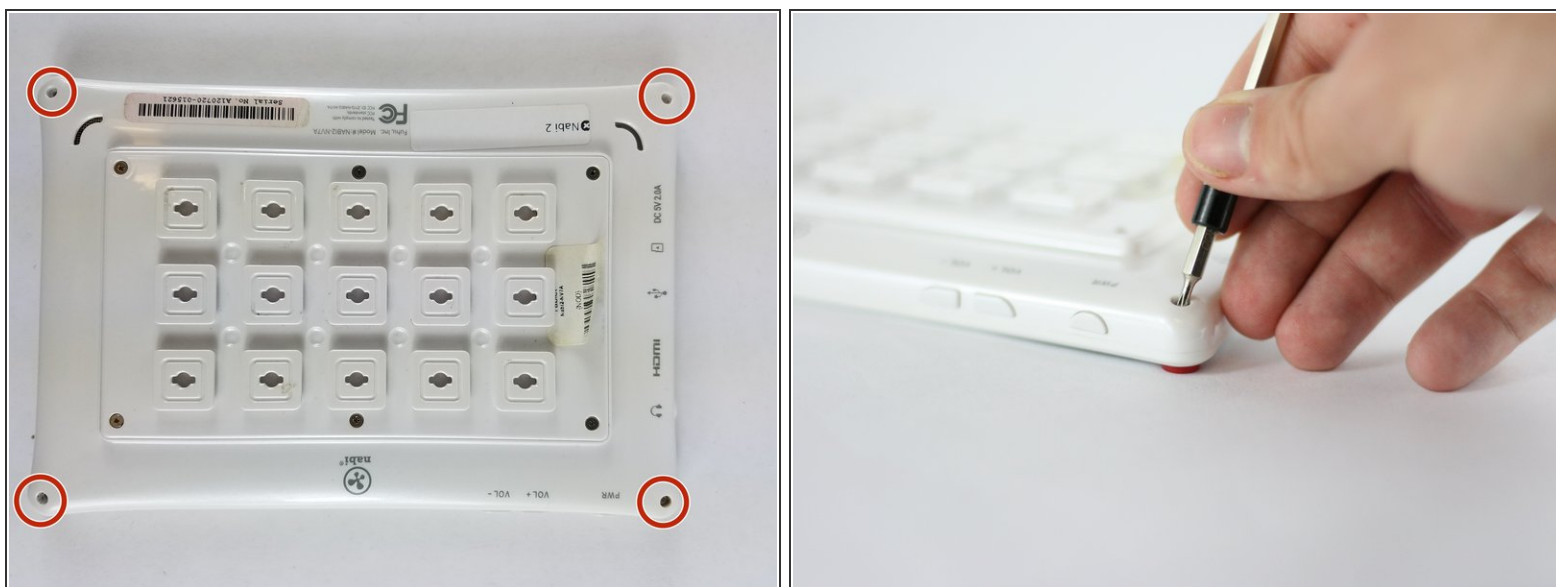
- [Nabi 2 Battery](#) (1)

Step 1 — Nabi 2 Back Cover Removal



- Remove the rubber bumper from the tablet.


Step 2



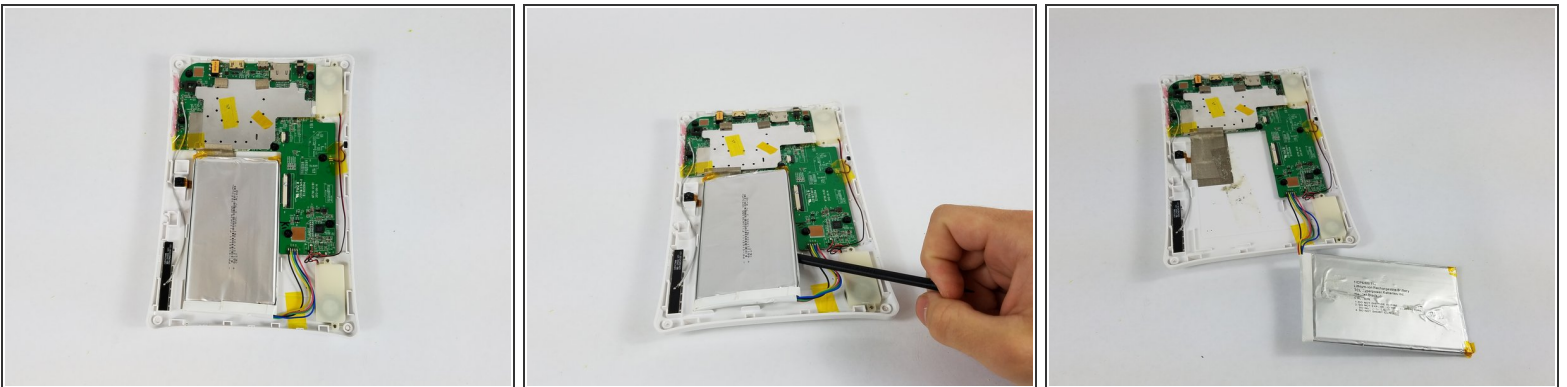
- With a PH00 screwdriver, remove the four outermost screws from the back of the tablet.

Step 3



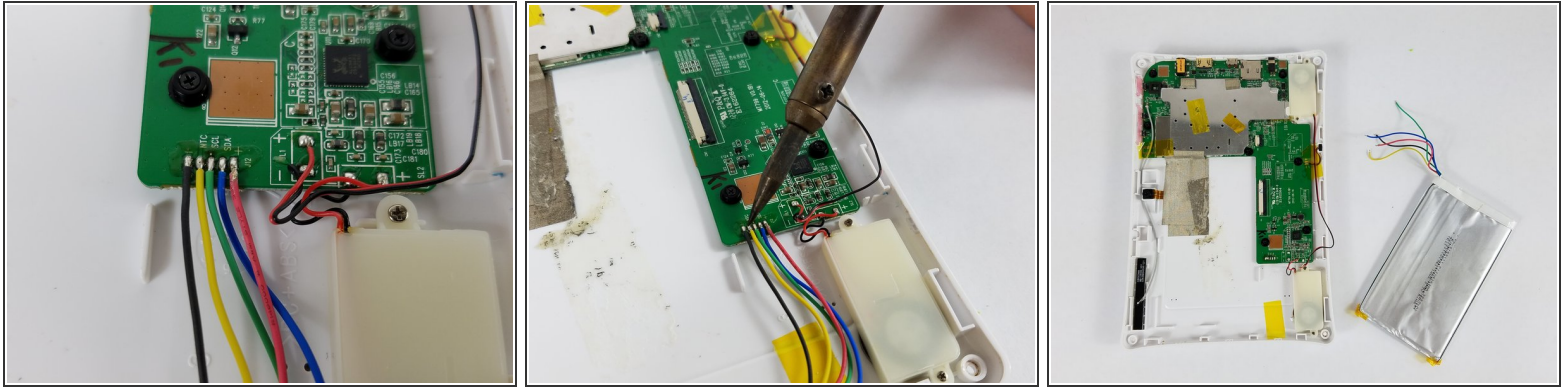
- Carefully, insert a plastic opening tool into the seam of the device and begin gently prying the two plastic pieces apart.
 - Work the tool all the way around the device. Small plastic clips should release. If they do not, gently apply outwards pressure until the clips give.
-  Do not force the clips open, as they are fairly easy to break

Step 4 — Battery



- Use the spudger to pop the battery out of place and set it aside.

Step 5



- Desolder the battery connection and remove the battery completely
- Note the color order for future replacement

To reassemble your device, follow these instructions in reverse order.