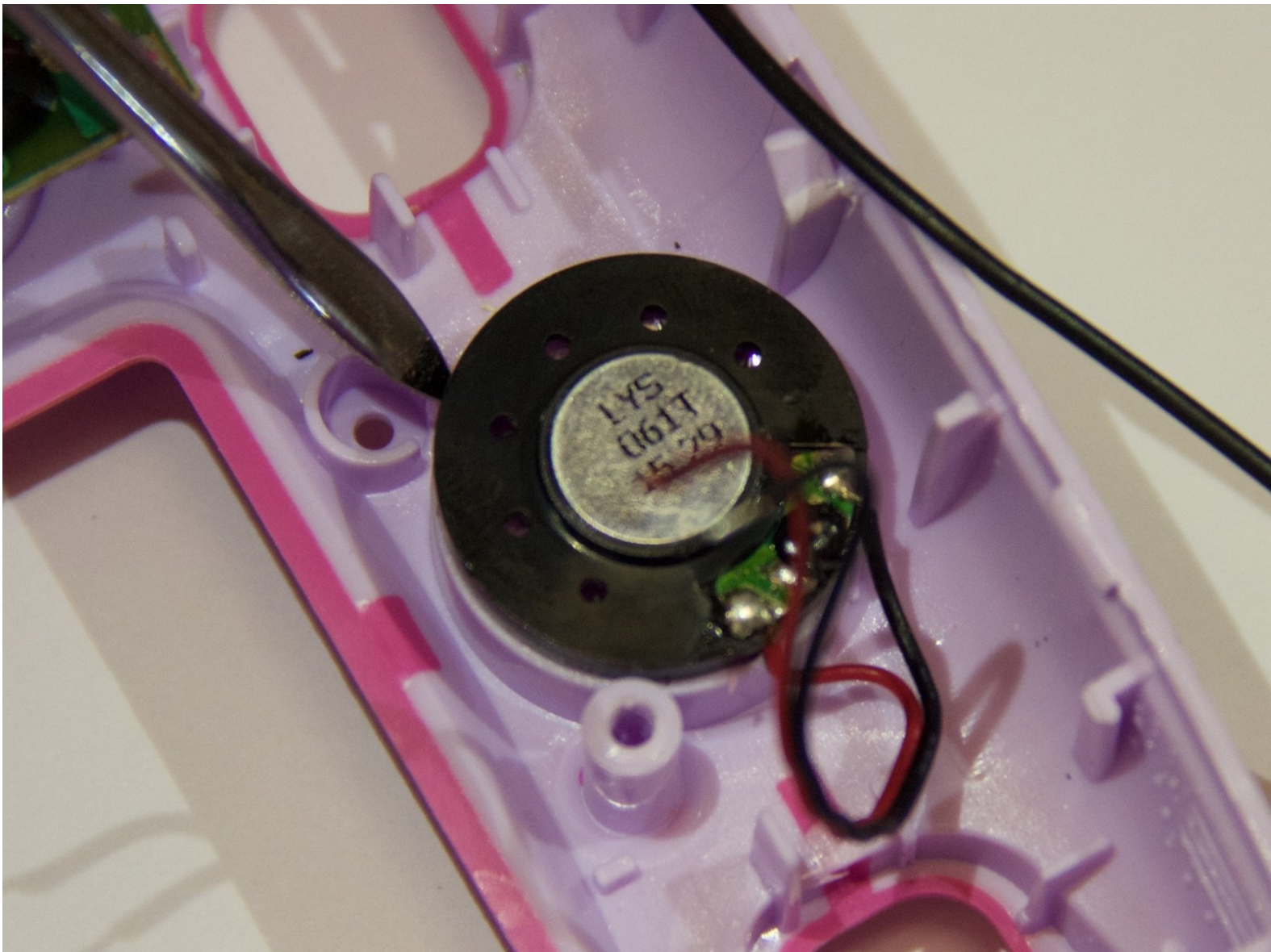




VTech Kidizoom Camera Connect Speaker Replacement

The single speaker in this device provides all the sound for video playback and games you can play. Replacing this might be an option if your device is not providing sound when it should.

Written By: Justin Sanchez



INTRODUCTION

Use this guide to remove and replace the speaker.



TOOLS:

- [Soldering Iron](#) (1)
 - [Metal Spudger](#) (1)
 - [Phillips #0 Screwdriver](#) (1)
-

Step 1 — Front Case



 Remove batteries and SD card before beginning disassembly!

- Locate the four plastic screw covers denoted by the markers and gently pry them up with the metal spudger.

Step 2



- Remove all four (11mm) screws with the Philips #0 screwdriver.


Step 3



- Remove the two battery cartridges located on the underside of the camera.
- Once cartridges are removed, use the metal spudger to pry open the top, bottom, and both sides of the camera.

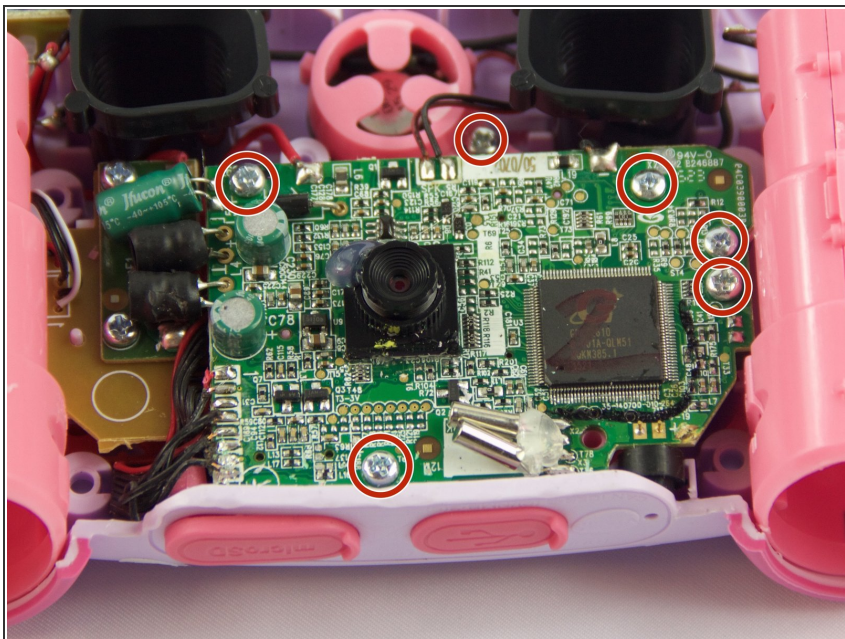
Step 4



 Beware of the two black viewfinder lens falling out as you pry open the device!

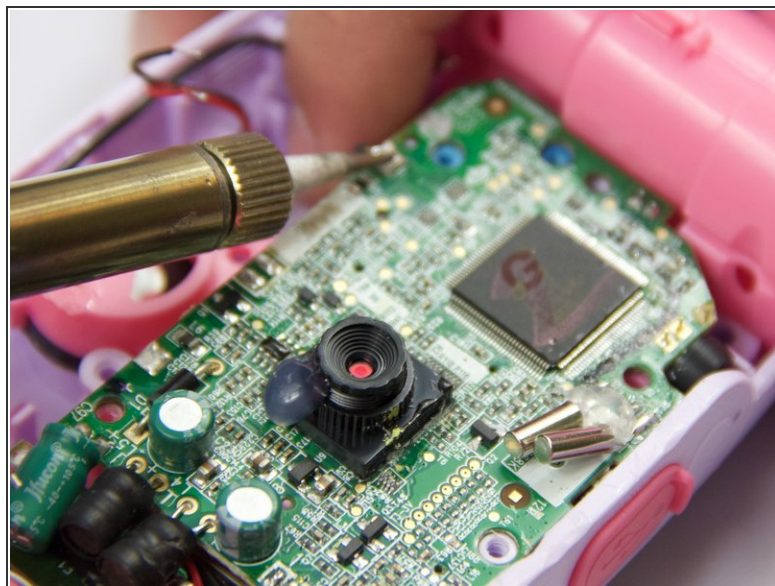
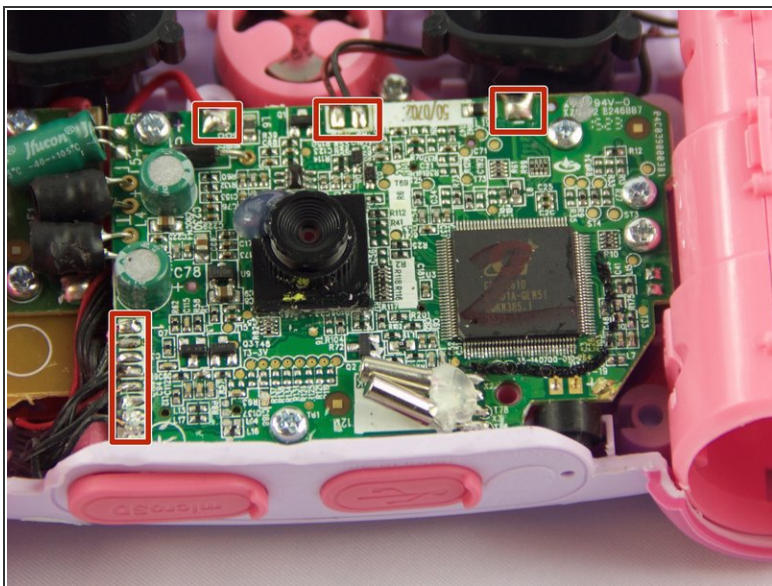
- The device should now be open and ready for further repair and/or replacement parts.

Step 5 — Motherboard



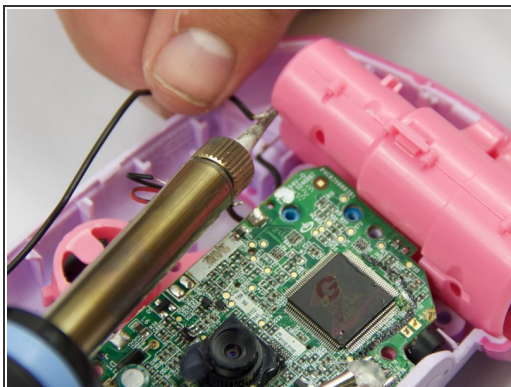
- Locate and remove the screws circled in the provided image with a Philips #0 screwdriver.

Step 6



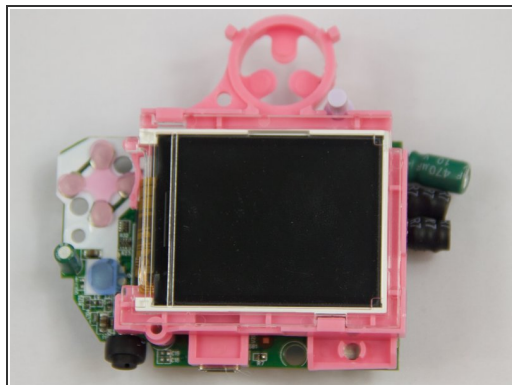
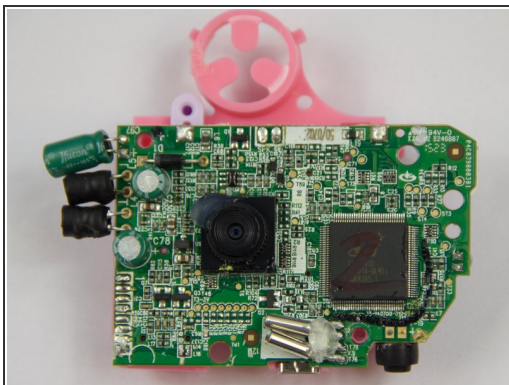
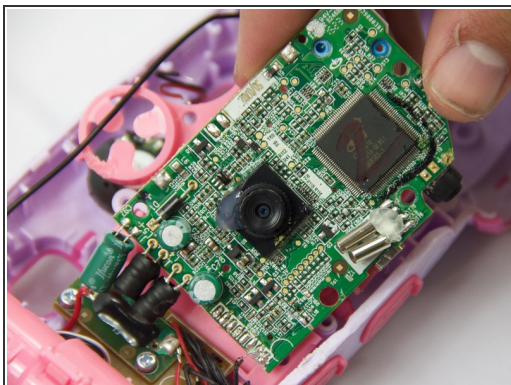
- Unsolder the connection points on the motherboard.

Step 7



- Unsolder the connections to the right battery terminal. Removing the terminal allows easier access to the motherboard.

Step 8



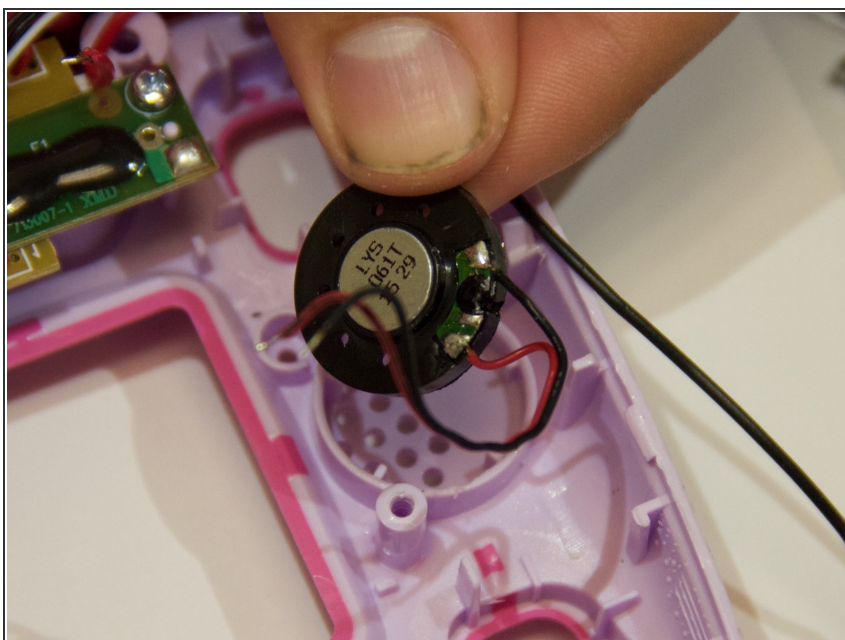
- Carefully pull up on the motherboard and pink plastic underneath the motherboard. The pink plastic contains the display and is connected to the motherboard.

Step 9 — Speaker



- The speaker is glued in so you must use the metal spudger to break the seal made by the glue.

Step 10



- Once the seal is broken the speaker should move freely. Carefully lift and remove the speaker along with its attached red and black wires.

To reassemble your device, follow these instructions in reverse order.