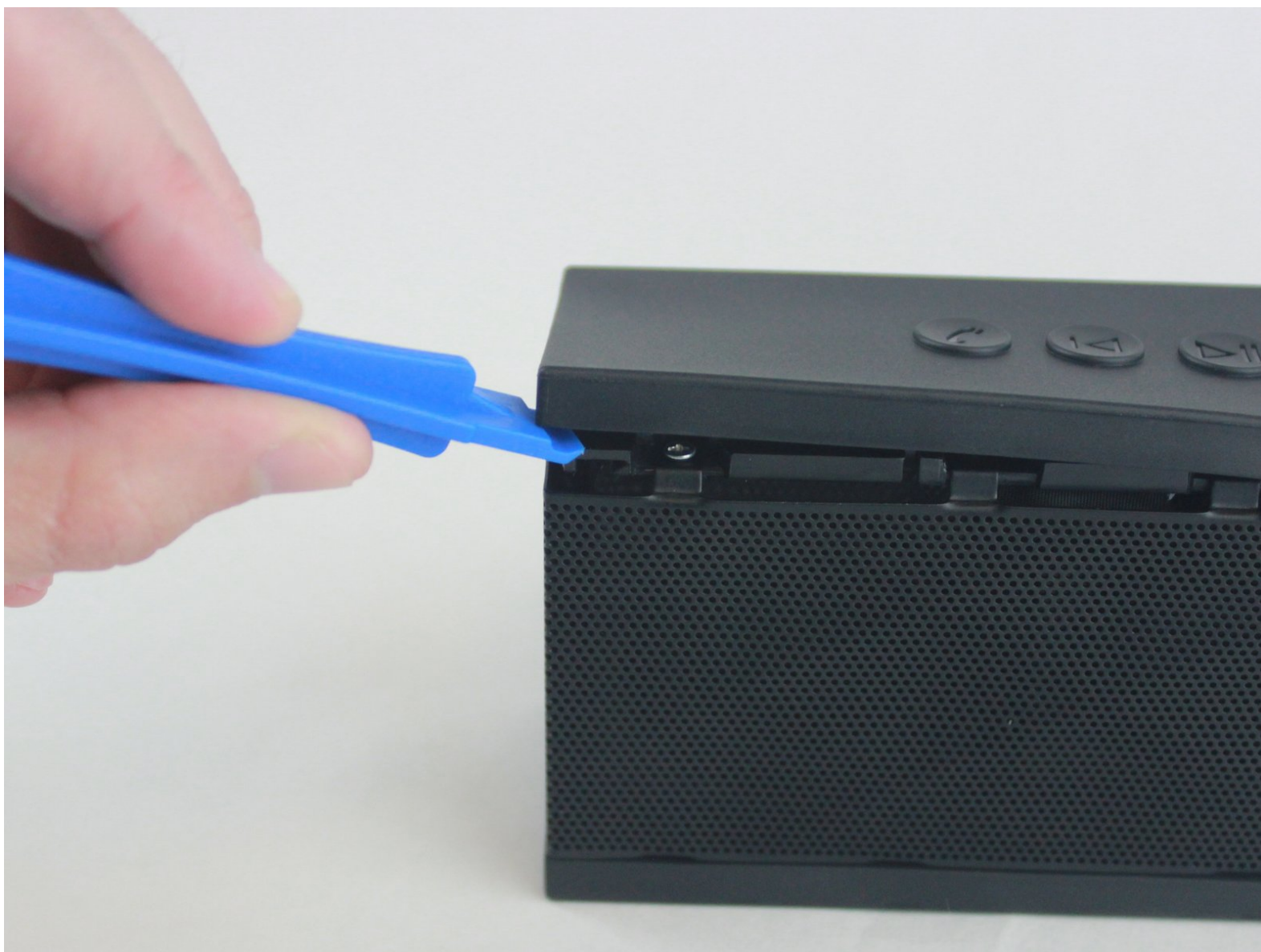




# SoundBot SB571 Speaker Grille

This guide will show how to replace the speaker grille. The speaker grille is an important component because it is where the sound is projected from the device.

Written By: Yana



## INTRODUCTION

Replacing the grille requires taking off the outside cover and unscrewing 14, 0.6cm screws. You will need a Phillips screwdriver, blue plastic opening tool and a new front metal cover.



### TOOLS:

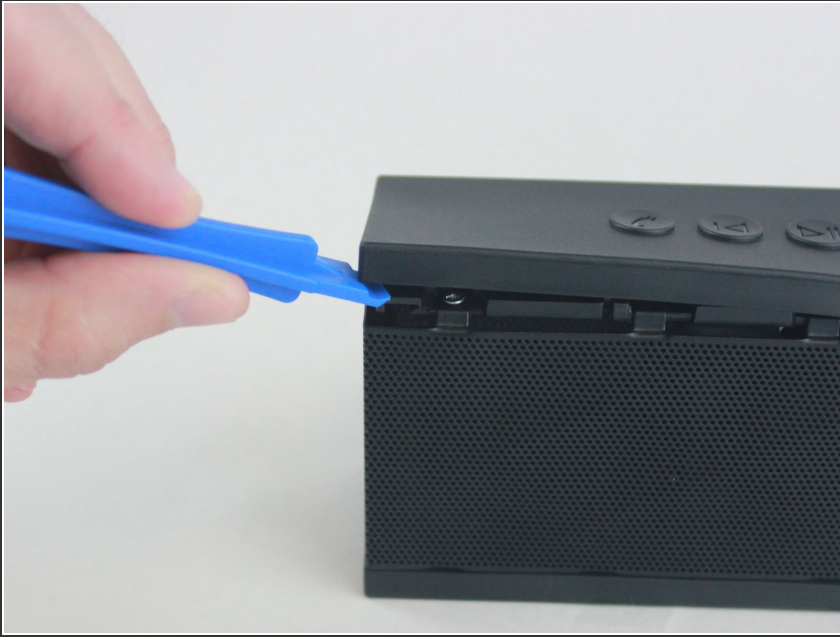
- [64 Bit Driver Kit](#) (1)
- [iFixit Opening Tools](#) (1)



### PARTS:

- [Front Metal Panel](#) (1)

## Step 1 — Speaker Grille



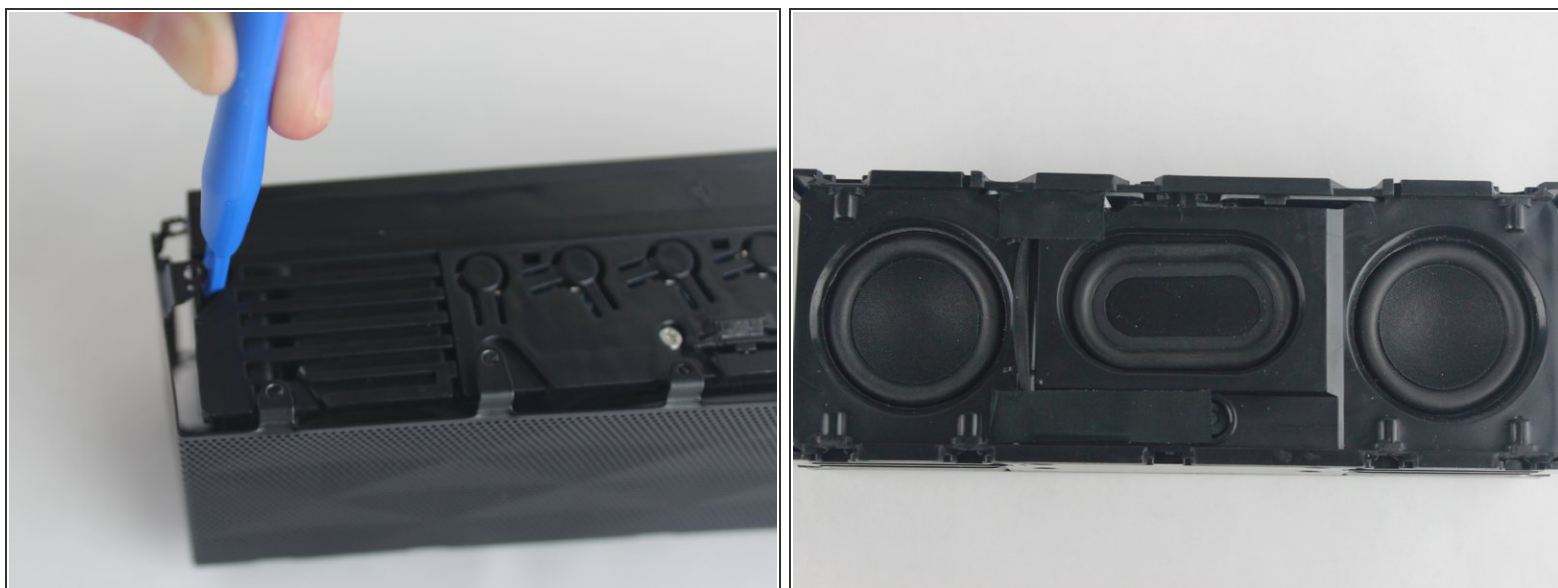
- ✦ Before disassembling the speaker, make sure it is powered off.
- Place the speaker on a flat surface.
- Take your blue plastic opening tool and remove the plastic cover.

## Step 2



- Orient the speaker so that the top is facing up.
- Using your Phillips PH0 screwdriver unscrew the 14, 0.6cm screws from the device along the speaker grille.

### Step 3



- Reorient the speaker so the grille is facing you.
- Using the blue plastic opening tool, prop open the metal grille.
- Now the speaker grille is completely removed from the device and it can be replaced.

To reassemble your device, follow these instructions in reverse order.