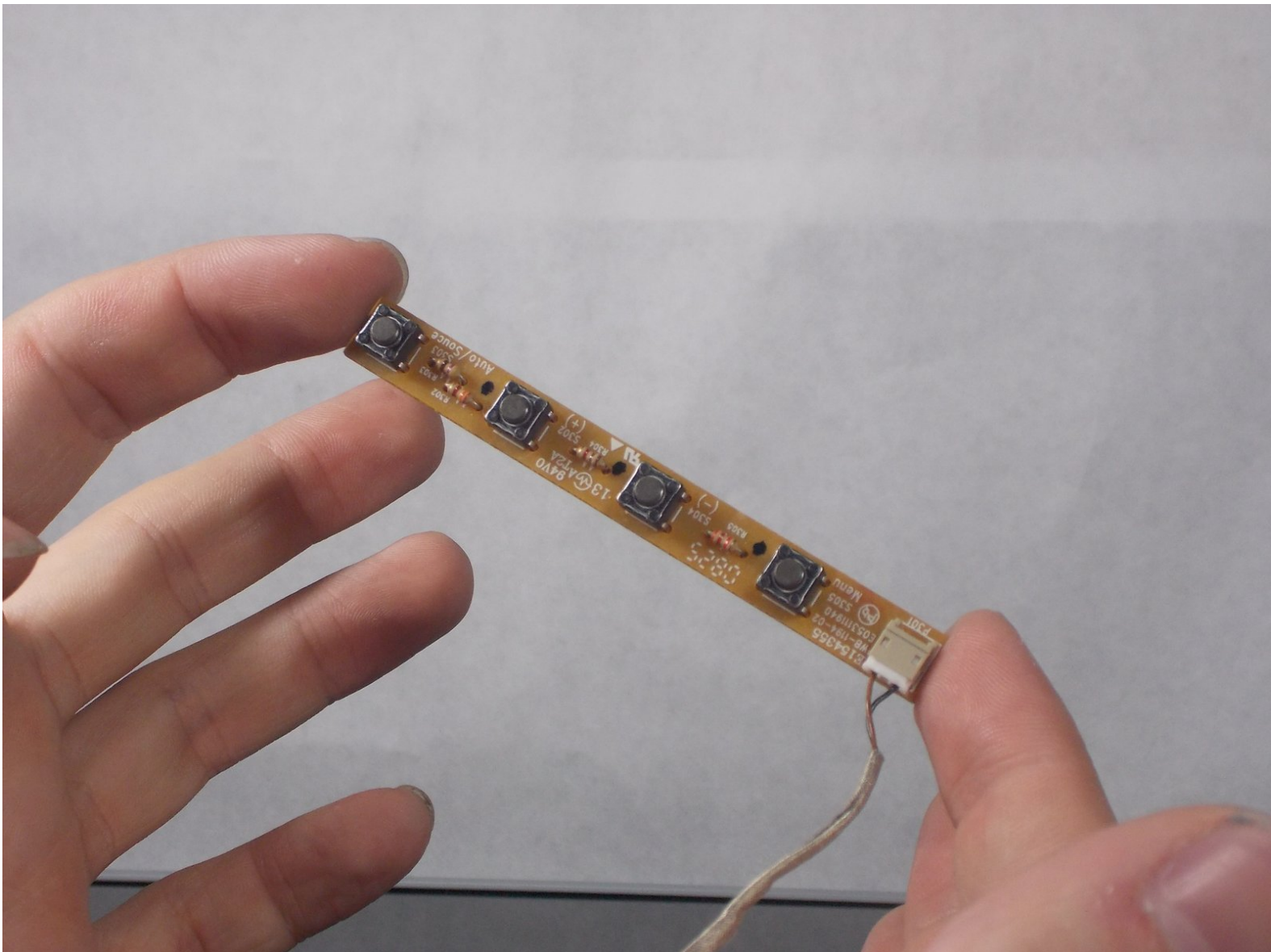




Written By: Patrick Aucoin



INTRODUCTION

Are you unable to adjust the sound on you HP w2216h monitor? You may need to replace your control buttons. These buttons are responsible for sound adjustment, calibration, input selection, and more.



TOOLS:

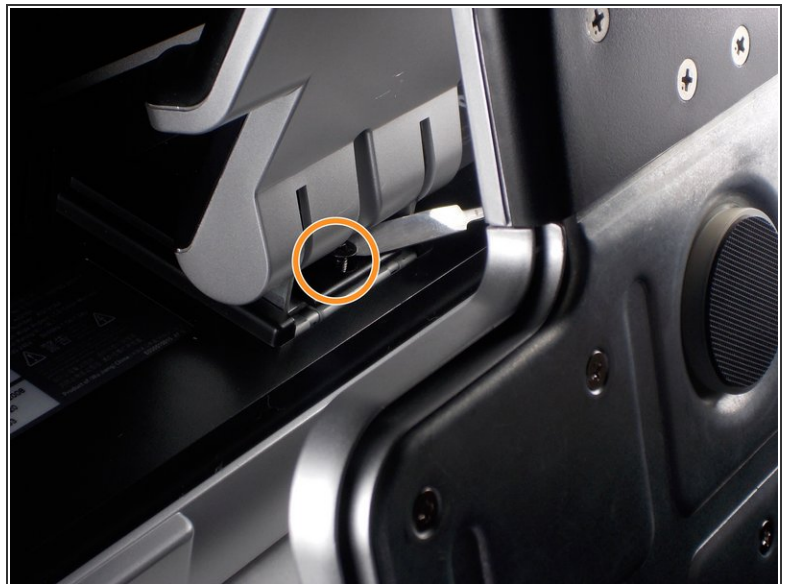
- [Metal Spudger](#) (1)
 - [Phillips #1 Screwdriver](#) (1)
 - [Phillips #000 Screwdriver](#) (1)
-

Step 1 — Control Buttons



- ⚠ Make sure you are grounded, the power supply is not connected, and you are wearing safety goggles.
- Remove the four 12 mm Phillips #000 screws on the back panel.

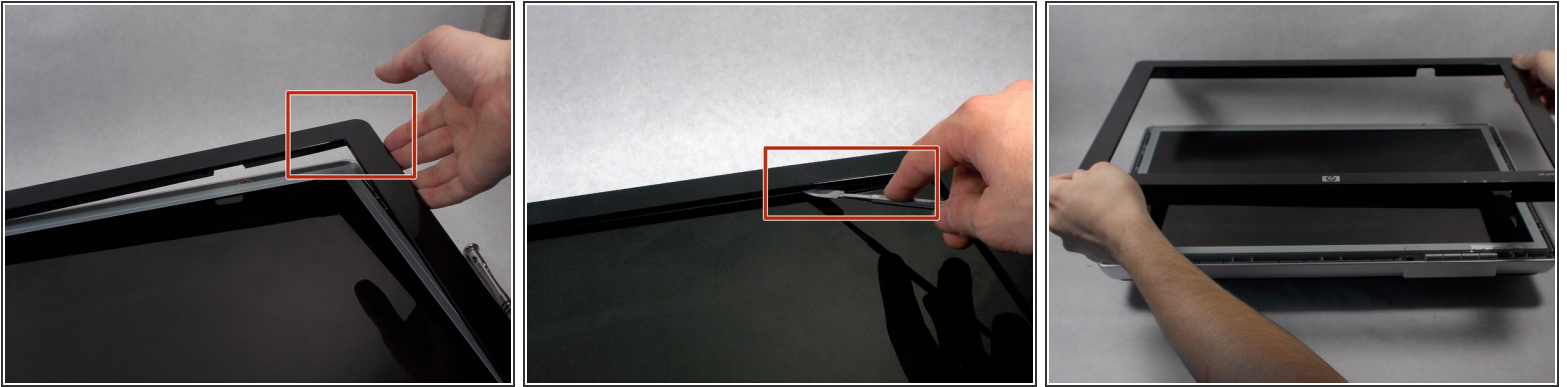
Step 2





- Remove the two 12 mm Phillips #000 screws above stand mounting bracket.
- Using a Phillips #1 with the 150 mm flexible extension remove 1 Phillips #1 screw under the stand mounting bracket.
- Stand will easily pull off.

This document was generated on 2020-11-26 01:51:07 AM (MST).

Step 3



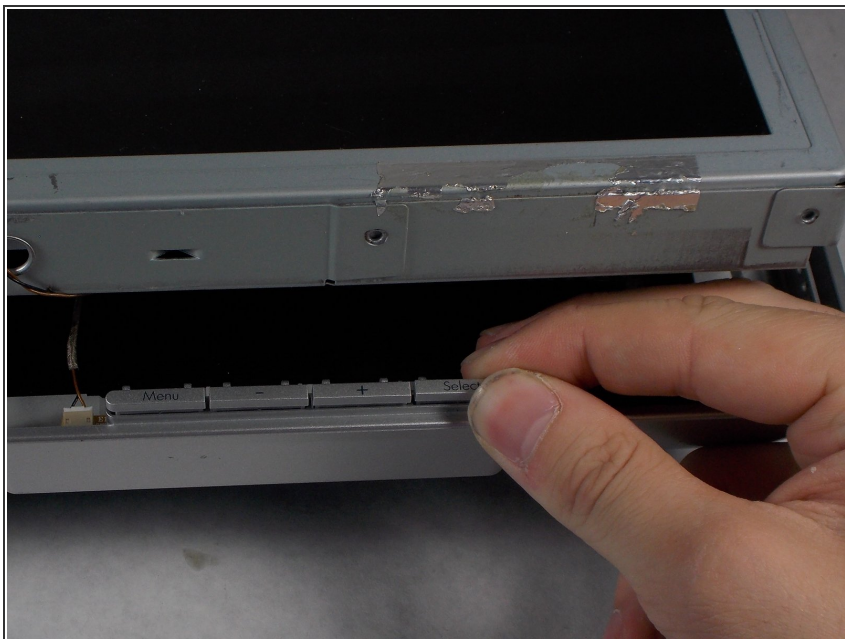
-  Do not put the metal spudger between the metal and the glass. It needs to go under the bezel and above the metal.
- Turn monitor so that the screen is facing you.
 - Pry the black bezel from above the metal by placing your metal spudger between the bezel and the metal and twisting the tool slightly.
-  The best places to pry are in the lower left and lower right corners of the black bezel.

Step 4



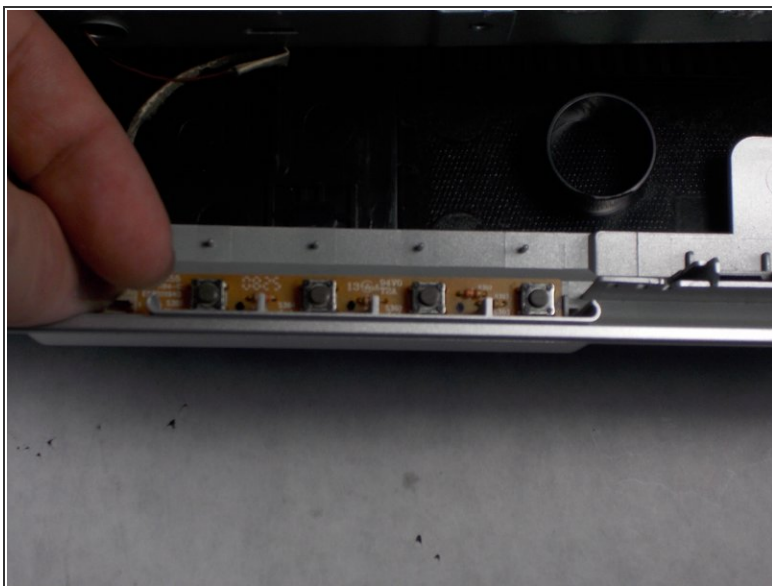
- Lift the screen assembly from the plastic housing from the corners.

Step 5



- Remove the plastic buttons from the contacts

Step 6



- Remove the wire connecting the contacts to the screen assembly.

To reassemble your device, follow these instructions in reverse order.