



# PlayStation 3 Super Slim Laser Lens Replacement

Faulty laser lens? This guide will walk you through replacing your PS3's laser lens component.

Written By: Joseph O'Connor



## INTRODUCTION

The guide will show users how to remove the laser lens of the PlayStation 3 Super Slim. By showing the removal of the correct screws and cables, the guide will be able to give users the ability to remove their optical drive from its enclosure. After removing the optical drive, The user will open up the optical drive to be able to remove the laser lens. This allows for the replacement of a component of the PlayStation 3 Super Slim that reads the Blu-Ray discs.



### TOOLS:

- [Phillips #1 Screwdriver](#) (1)
  - [iFixit Opening Tools](#) (1)
  - [T8 Torx Security Bit Screwdriver](#) (1)
-

## Step 1 — Power Supply Unit



- Remove the side HDD bay cover by sliding the panel towards the back of the device.

**i** The bay cover is found on the right side of the device.

## Step 2



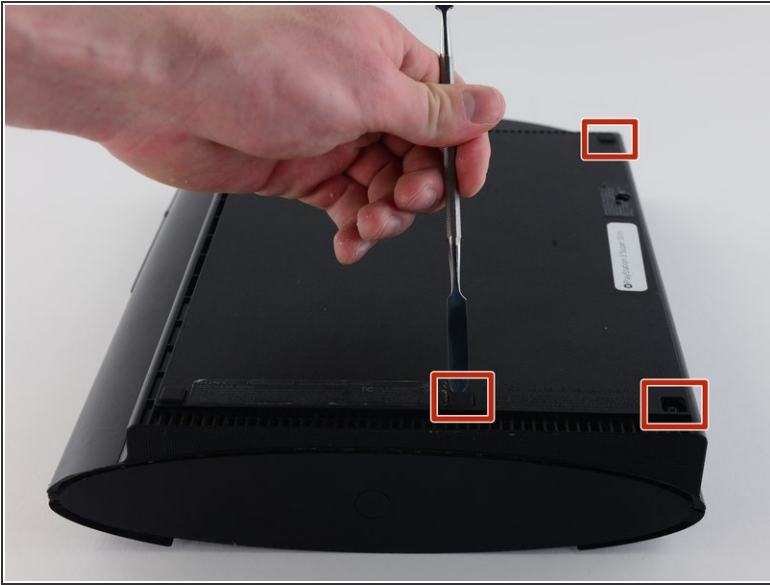
- Remove all three black 9.8mm long screws with a T-8 security screwdriver.
- Remove the blue 7.9mm long screw with a Phillips #1 screwdriver.

## Step 3



- Pull on the tab to remove the HDD.
- ⓘ The HDD should be removed and stored carefully to prevent damage to data.

## Step 4



- On the bottom of the device, pry out the three rubber feet covers with the metal spudger.
- Remove the four black 36.3mm long screws underneath with a Phillips #1 screwdriver.
- ⓘ One screw is located underneath the warranty sticker. This sticker can either be peeled off or punctured through with a screwdriver.

## Step 5



- On the top of the device, unlatch the hook on the furthest right beneath the front panel, lift the panel slightly and apply pressure.
  - Unlatch the second right-side hook by sliding a plastic opening tool in the marked area.
  - Slide the panel to the left to unlatch the rest of the hooks.
- i** This is probably the most difficult part of the procedure. If you cannot unlatch the hook on the front panel, you can attempt to pry all the hooks off. However, do this at your own risk, as these hooks break easily.

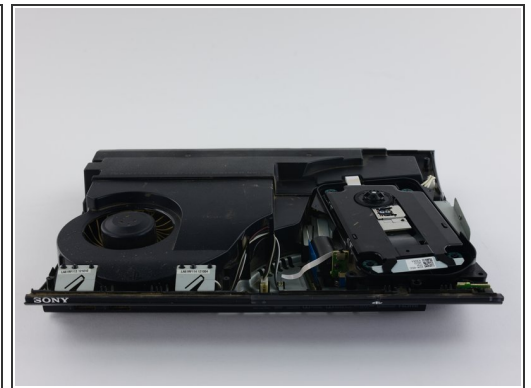
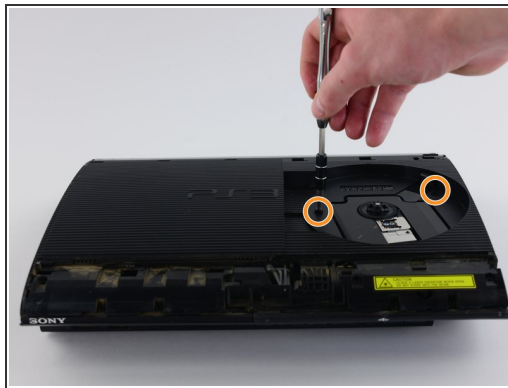


## Step 6



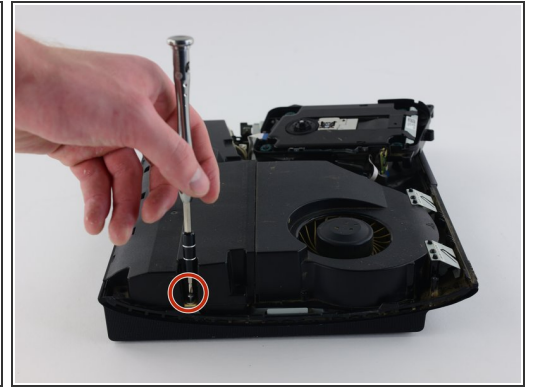
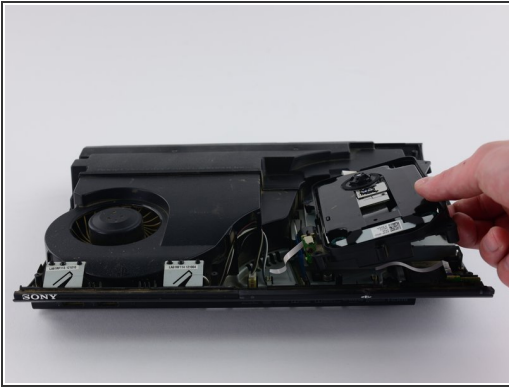
- Remove the back panel by pressing down the tab on the right side of the device, and sliding the panel to the left.

## Step 7



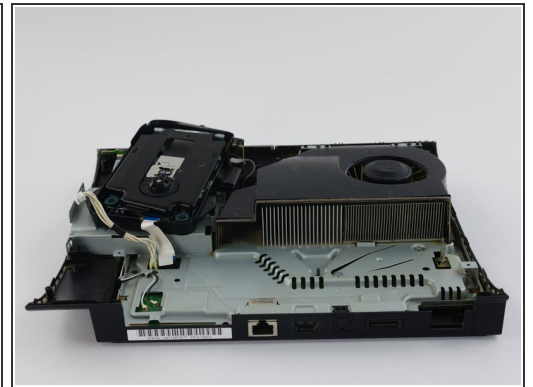
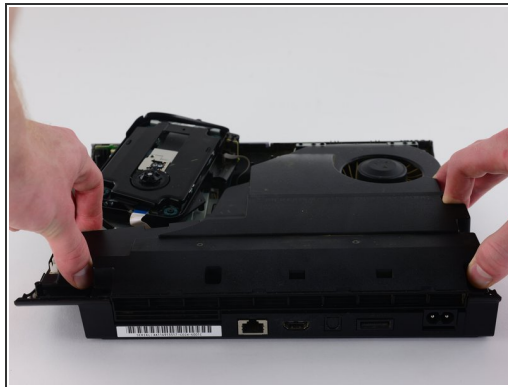
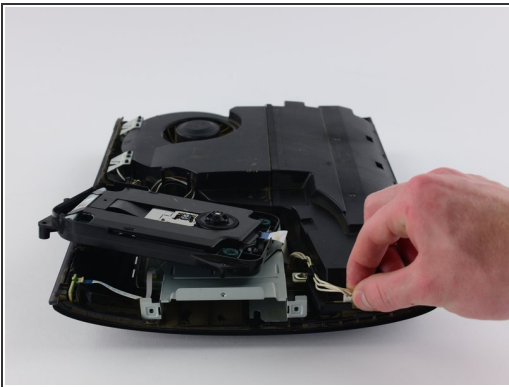
- Remove the five silver 20.8mm long screws with a Phillips #1 screwdriver.
- Remove the two black 9.9mm long screws in the disc reader with a T-8 security screwdriver.
- Remove the top black plastic shell.

## Step 8



- Move the optical drive to the side to reveal one of the silver 8.8mm long screws.
- Remove the two silver 8.8mm long screws on either side with a Phillips #1 screwdriver.

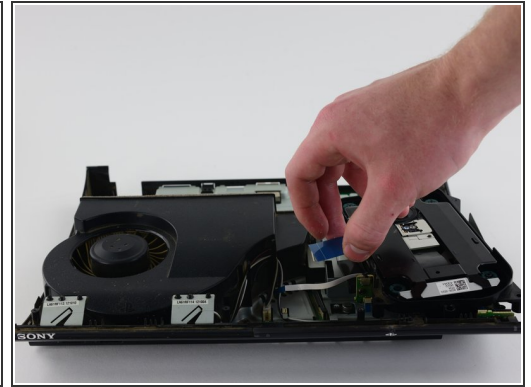
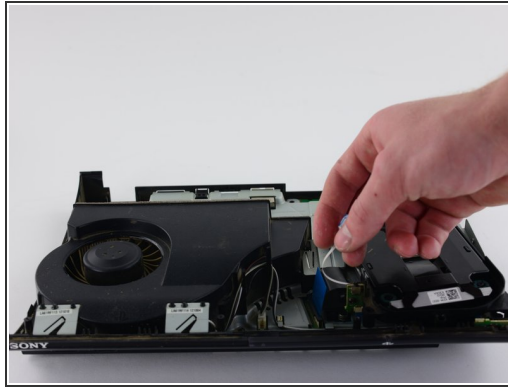
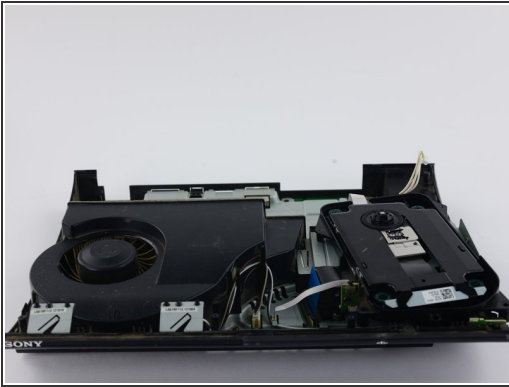
## Step 9



- Remove the cable from the plug and remove the wires from the two plastic hooks.
- ⚠ When removing the cable from the plug, pull on the plastic male connector, not on the wires.
- Remove the power supply unit.

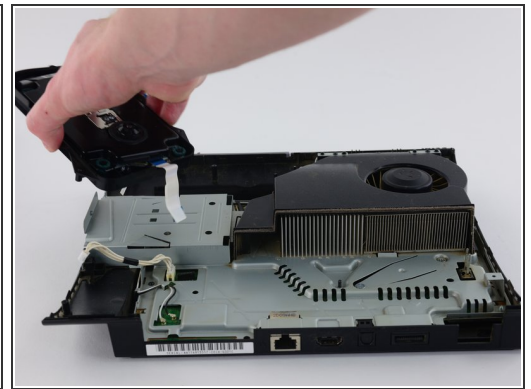
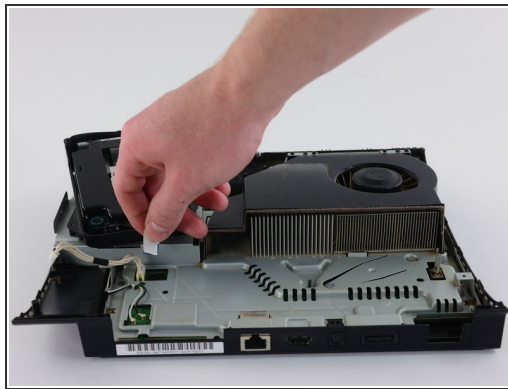
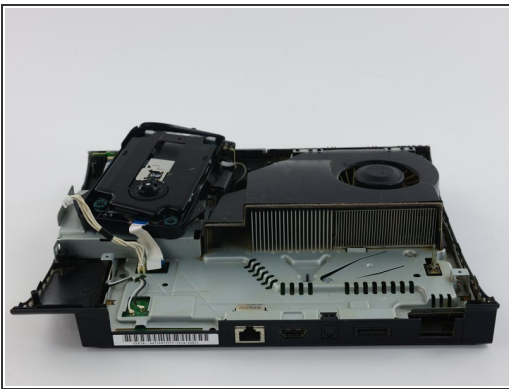


## Step 10 — Optical Drive



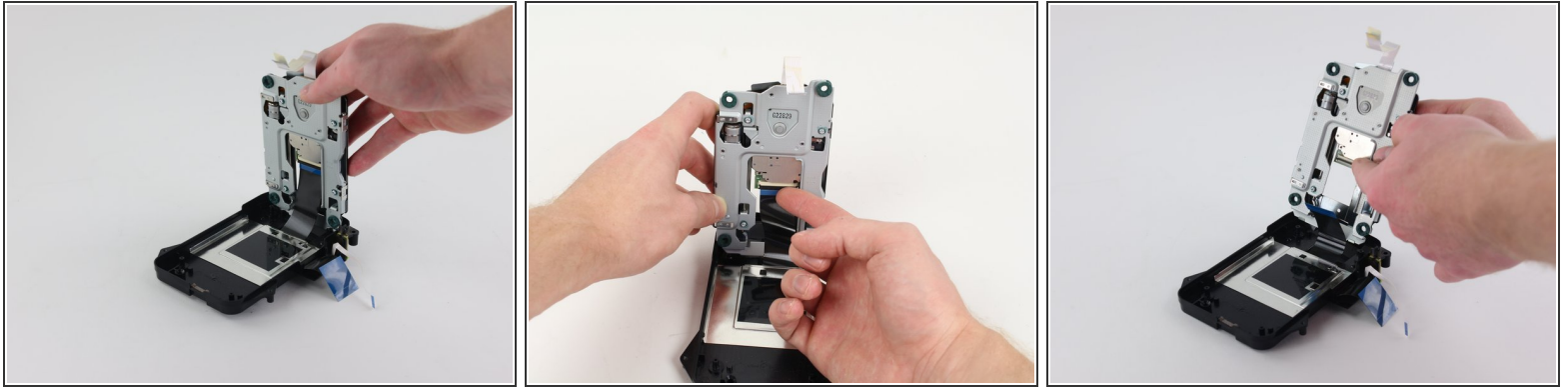
- Remove the front white flex-ribbon cable by pulling upward from its base.
- Remove the black and blue flex-ribbon cable behind it by pulling upward on the black tab, then pulling out the cable.

## Step 11



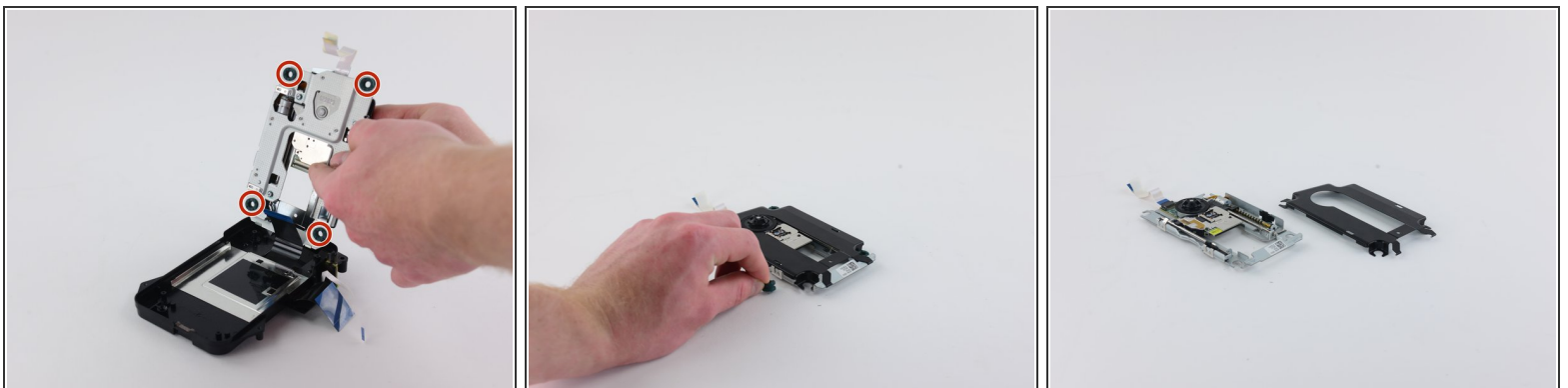
- Rotate the device 180 degrees.
- Remove the back white flex-ribbon cable by pulling upward from its base.
- Remove the optical drive.

## Step 12 — Laser Lens



- Lift up the free end of the laser lens to separate the two layers.
- On the bottom of the laser lens, flip up the black plastic latch to remove the flex ribbon cable.

## Step 13



- Remove the 4 rubber bushings.
- Remove the metal faceplate from the laser lens.
- ☑ When inserting your new lens, attach the top metal casing to the replacement laser lens.

To reassemble your device, follow these instructions in reverse order.