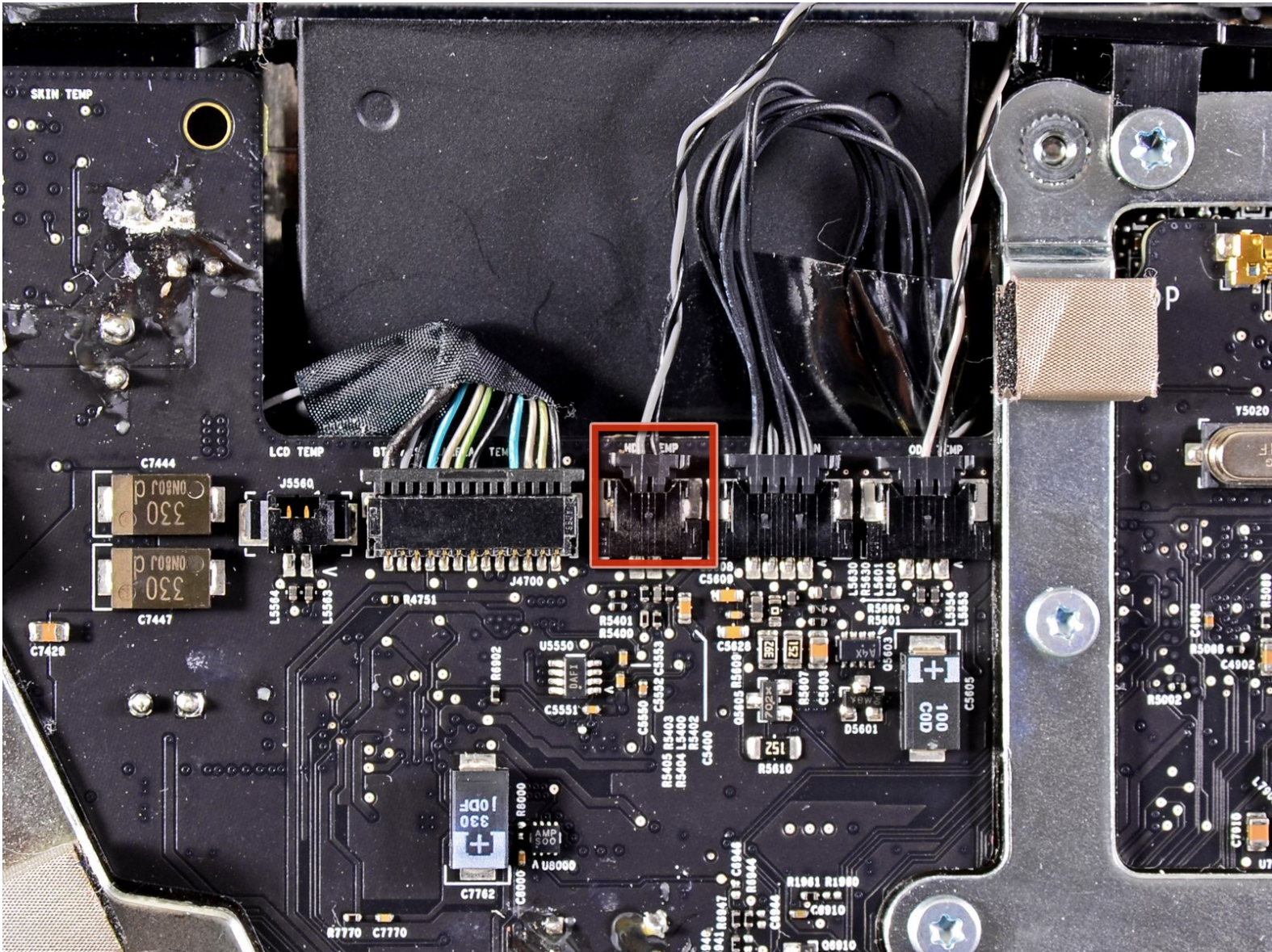




Written By: Andrew Bookholt



Page 1 of 5

---

# INTRODUCTION

Internal Prereq.

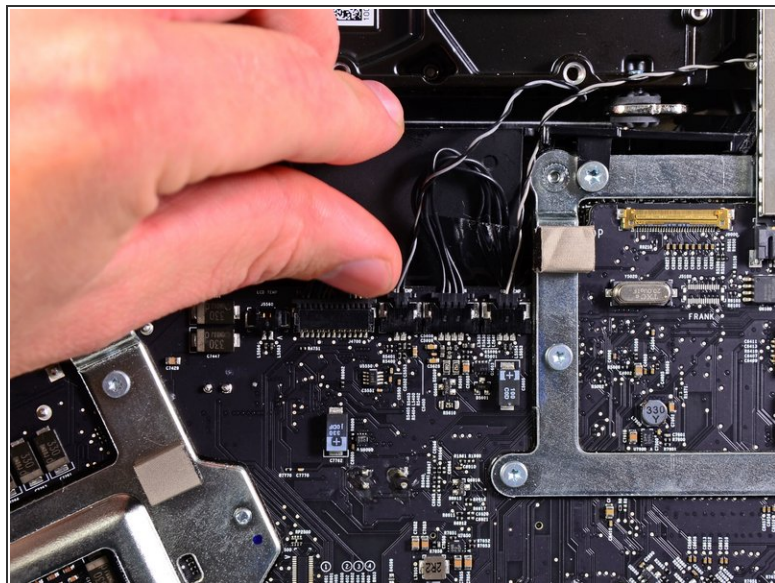
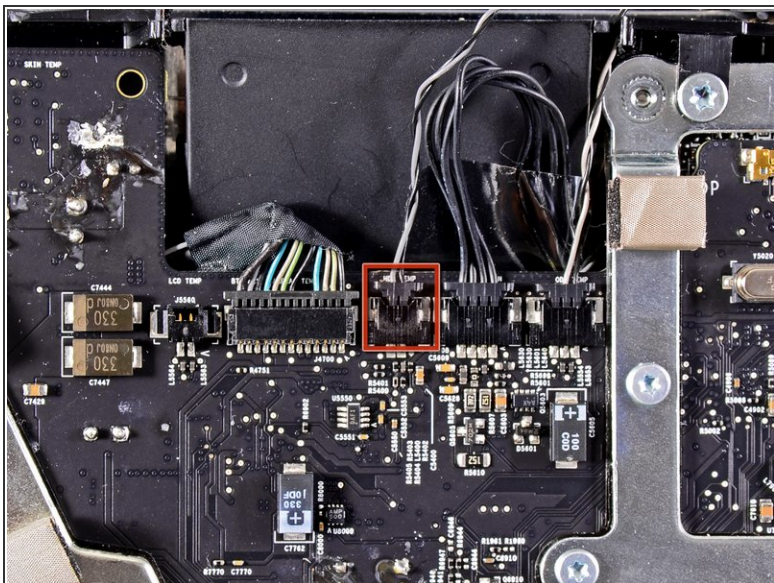


## TOOLS:

- [T10 Torx Screwdriver](#) (1)
-

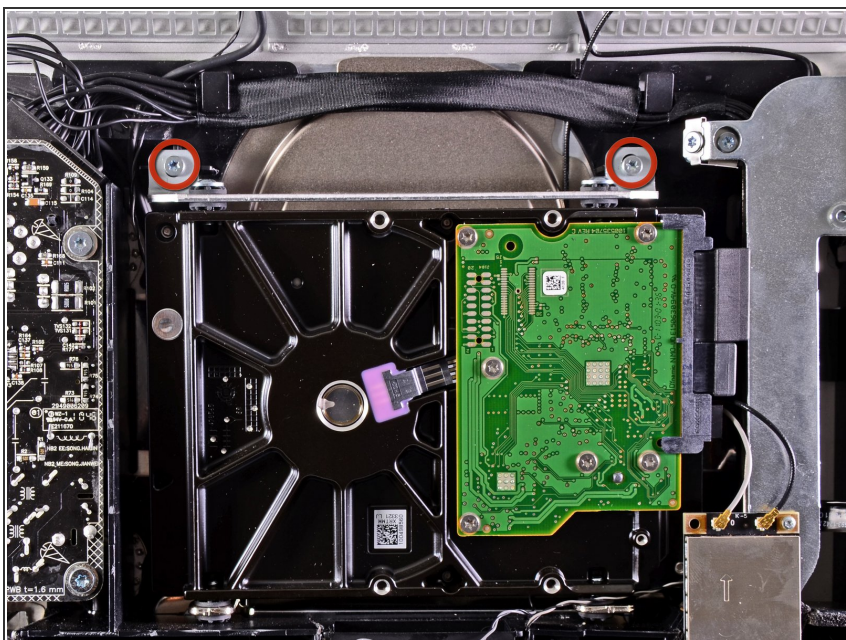


## Step 1 — Hard Drive



- Pull the hard drive temperature sensor connector toward the top edge of the iMac to disconnect it from its socket on the logic board.

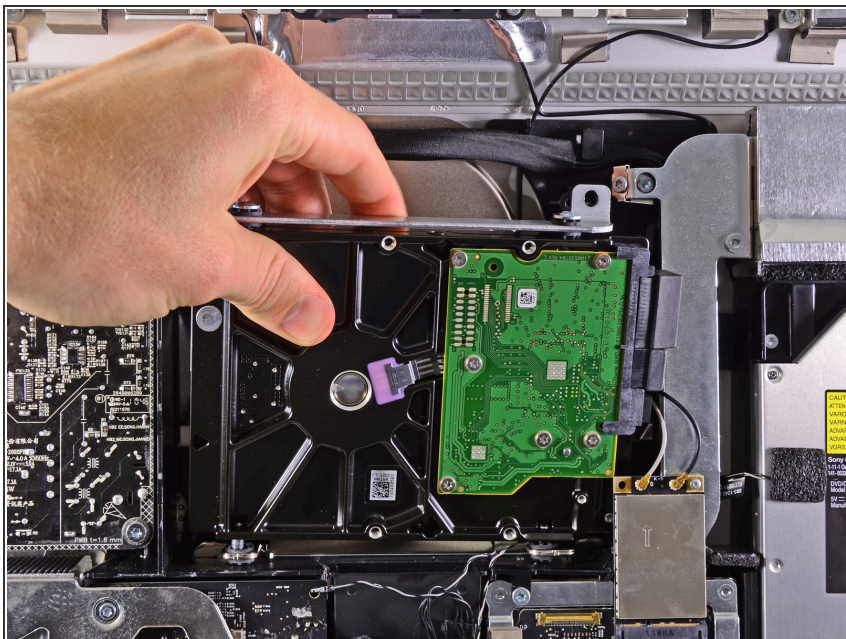
## Step 2




- Remove the two 9 mm T10 Torx screws securing the upper hard drive bracket to the outer case.



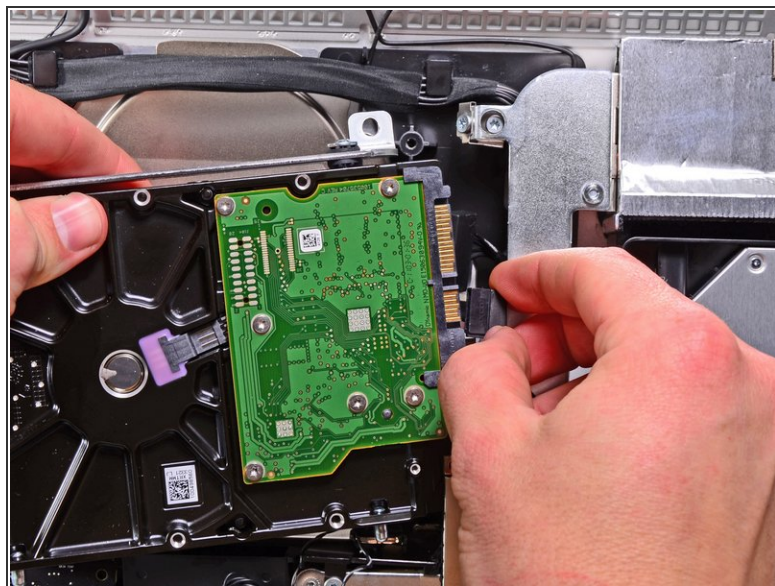
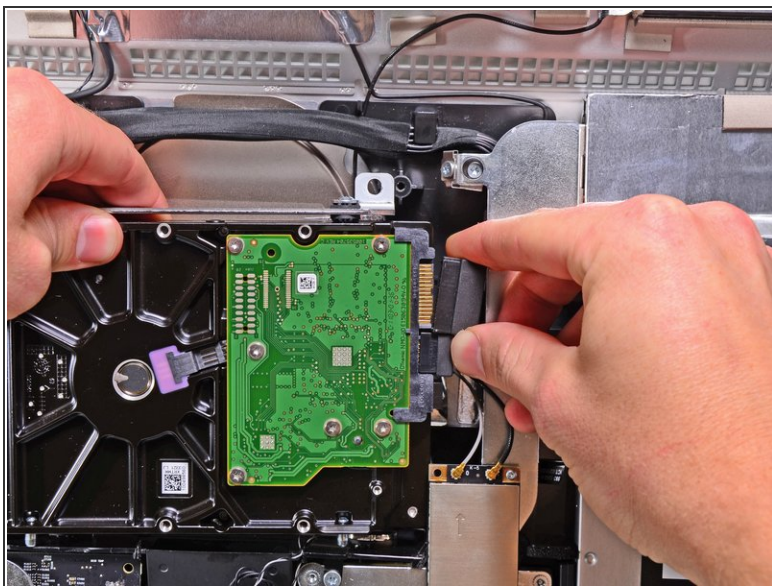
## Step 3



- Slightly rotate the hard drive out of the outer case and lift it up off its mounting pins toward the top edge of the iMac.

 Be careful not to contact the AirPort card as you lift the hard drive out of its recess.

## Step 4



- Disconnect the SATA data cable and SATA power connector from their respective sockets by pulling each connector away from the hard drive.

To reassemble your device, follow these instructions in reverse order.

This document was generated on 2020-11-28 02:18:52 AM (MST).

