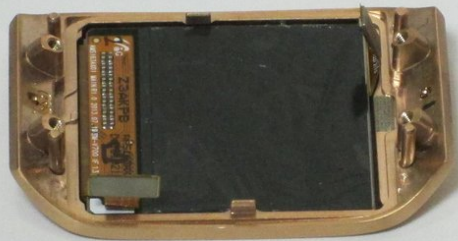




# Samsung Galaxy Gear Display Assembly Replacement

This is a guide on how to replace the LCD, Digitizer, and Bezel Assembly. The replacement assembly comes as one piece because the LCD and Digitizer cannot be easily removed from the bezel.

Written By: Joe



# INTRODUCTION

Should the screen need to be replaced, this guide will outline how to do so.



## TOOLS:

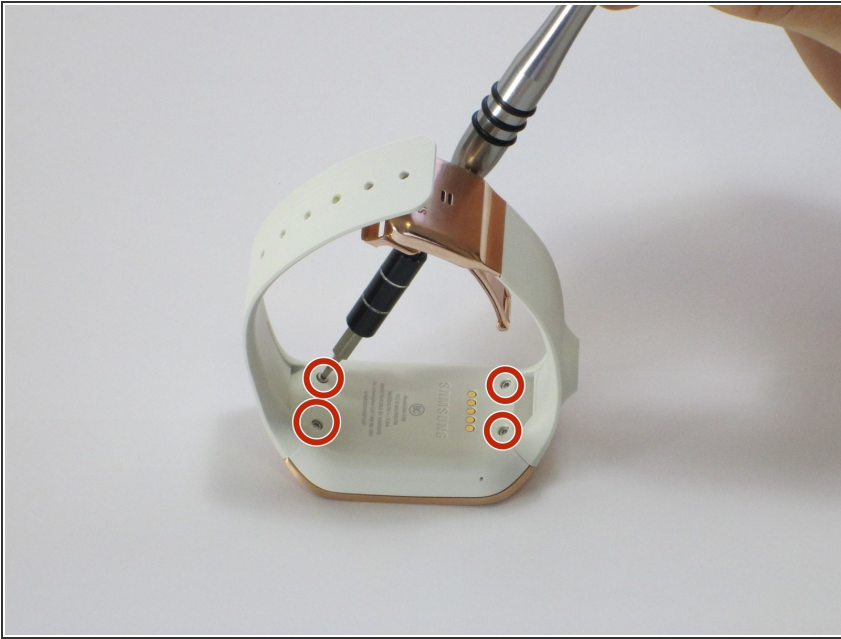
- [iFixit Opening Tools](#) (1)
- [T5 Torx Screwdriver](#) (1)



## PARTS:

- [Galaxy Gear \(1st Gen\) Screen](#) (1)

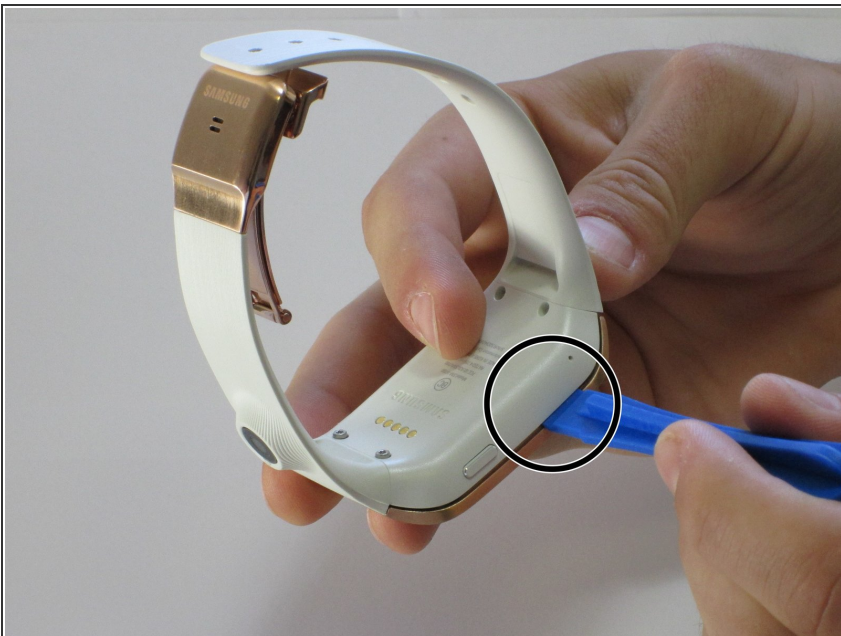
## Step 1 — Display Housing



- Use a T5 Torx screwdriver to remove the **four** 4.0 mm screws on the back of the device.

⚠ Be sure your device is turned off.

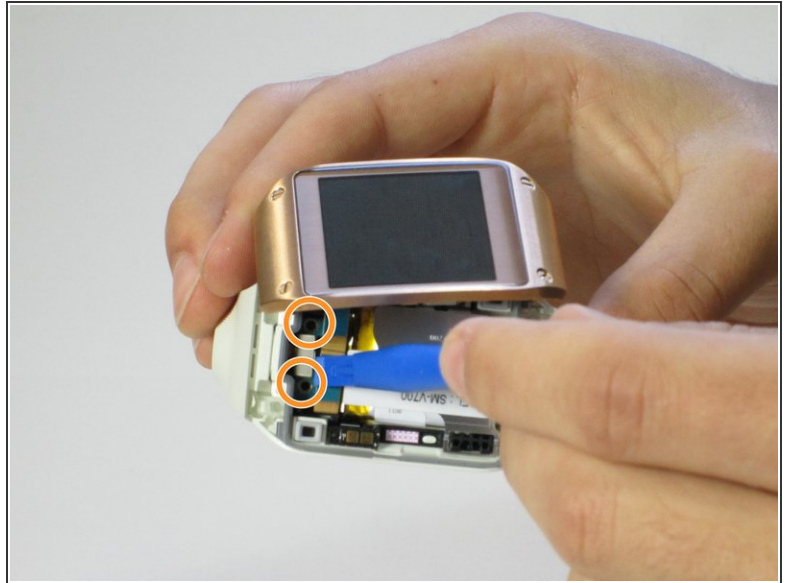
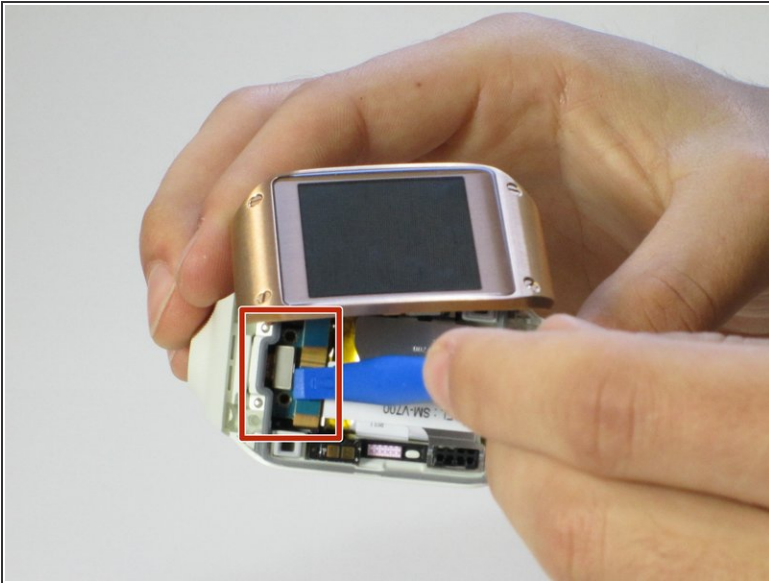
## Step 2



- Use a plastic opening tool to separate the display housing from the device.
- ⓘ To ensure you don't damage your device, insert the opening tool and slide it the entire length of the gap on both sides of the device.

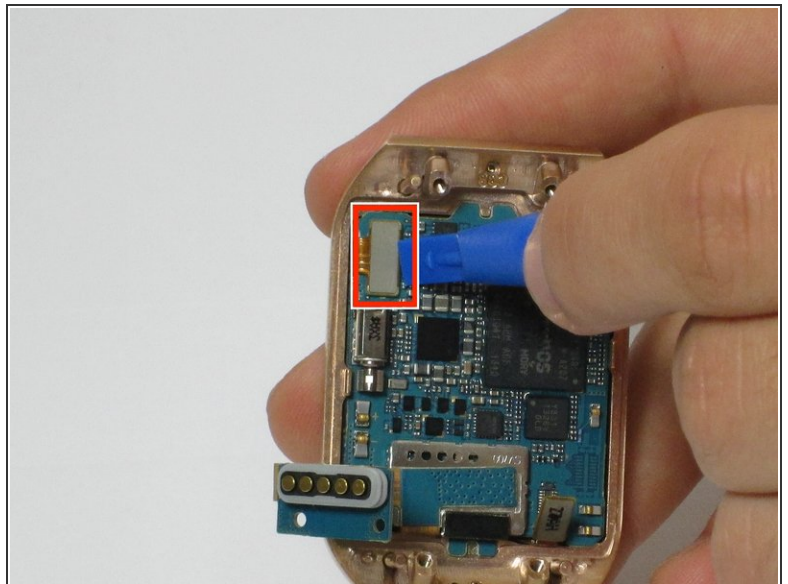
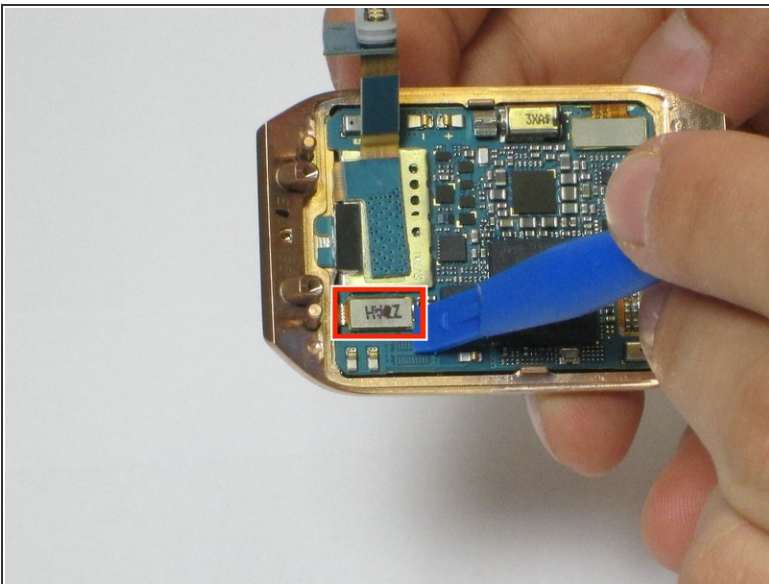


### Step 3



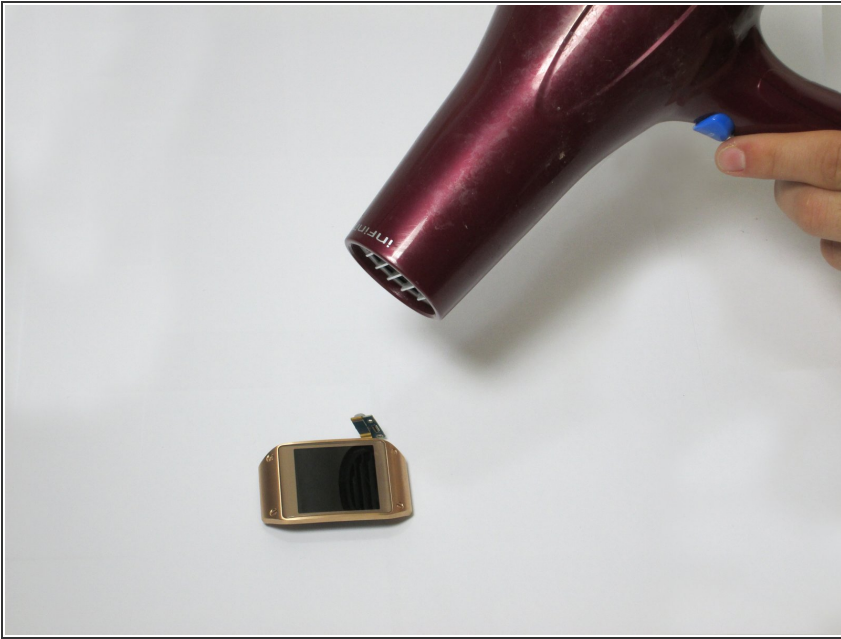
- Gently pry back the metal flap on top of the connector.
- Locate the two 2.0 mm black screws and unscrew using a Phillips PH00 bit. The connector will detach from the device.

### Step 4 — Motherboard



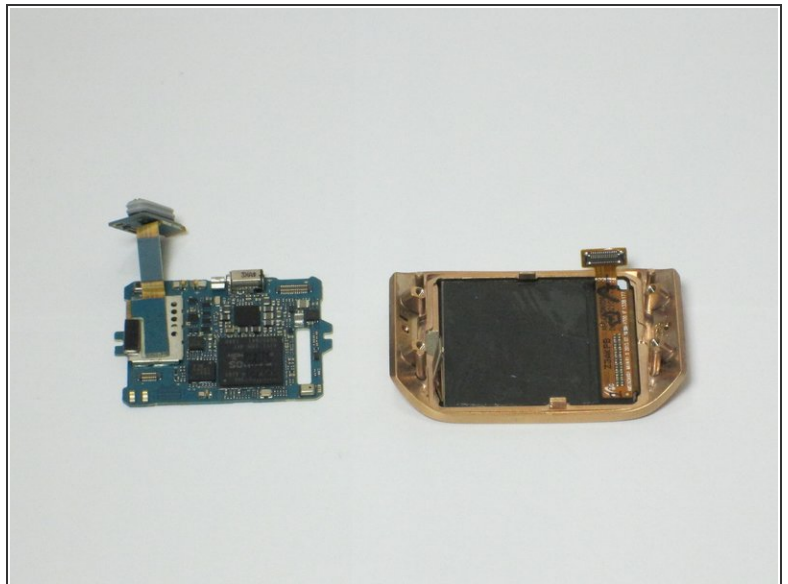
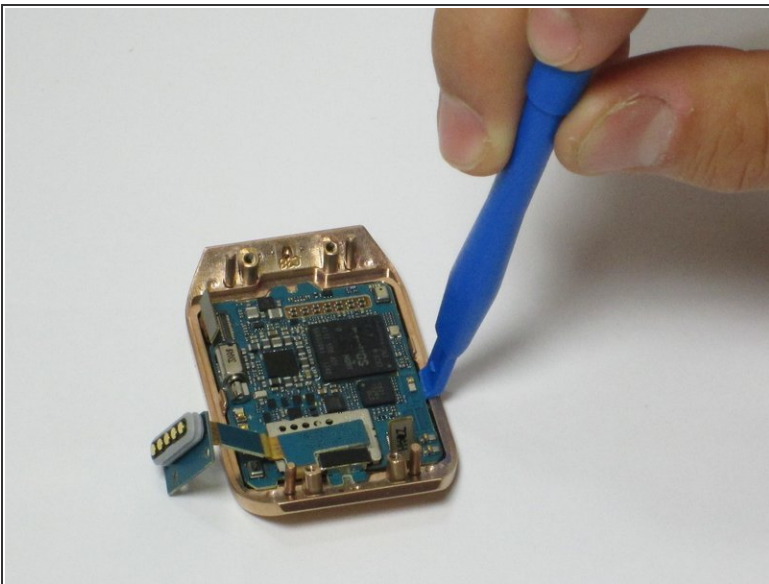
- On the display, use a plastic opening tool to lift up the two ribbon cables the motherboard.

## Step 5



- The motherboard is attached to the display using an adhesive
- Using a heat gun, heat up the display for 4 to 5 minutes, making sure to move the heat gun around to distribute the heat around the display. This heats up the adhesive making the motherboard easier to remove

## Step 6



- Using a plastic opening tool, carefully insert the opening tool in between the bezel and the motherboard and slide it the entire length of the logic board.
- Slowly pry up the motherboard from the display.

## Step 7 — Display Assembly



- The display assembly is now separated and can be replaced

To reassemble your device, follow these instructions in reverse order.