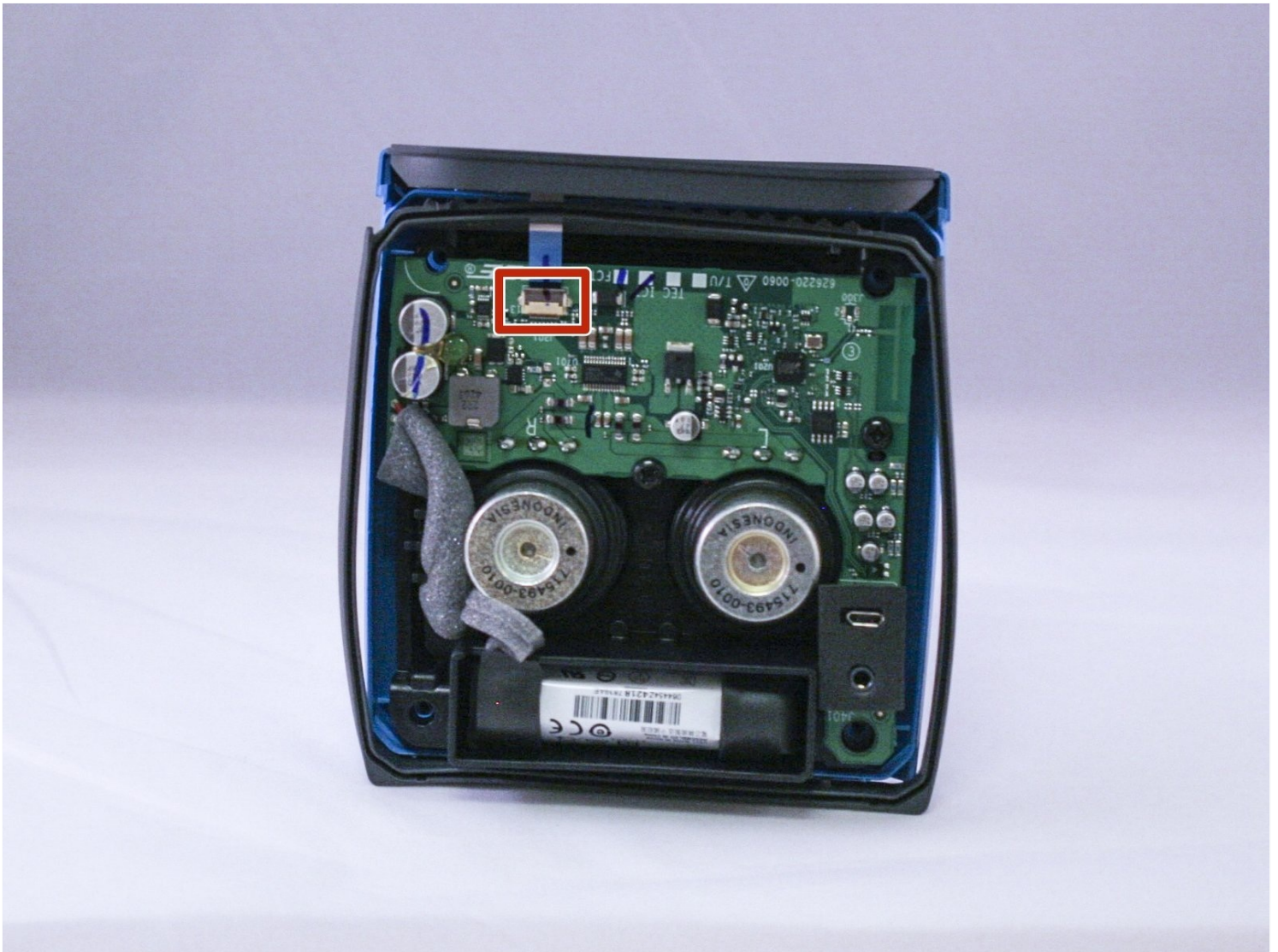




Bose SoundLink Color Button Pad Replacement

When one or all of the buttons stop working on...

Written By: Michael Thorn



INTRODUCTION

When one or all of the buttons stop working on a device, it can be a frightening thing. Use this guide to help.

TOOLS:


Phillips #0 Screwdriver (1)
Metal Spudger (1)
Tamper Resistant TORX Plus TR Bit (1)
Pro Tech Toolkit (1)

PARTS:


Rubber Cement (1)

Step 1 — Outer Casing



 Four round, plastic plugs are located on the back of the device.

- Using a metal spudger, carefully pry up the plastic covers.

 The covers are all glued on, so be careful not to scar the casing when prying them off. If possible, use a spudger or plastic opening tool to remove them.

Step 2



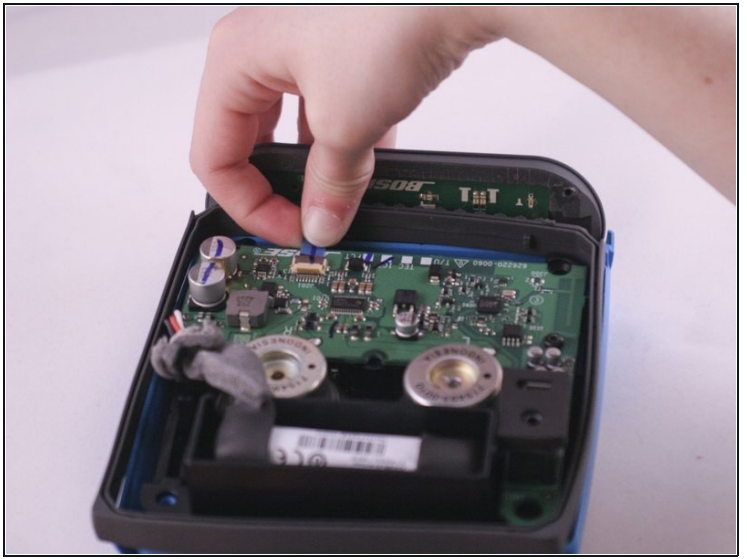
- Remove the four 1.8 cm-long T15 Torx Security screws from the outer case.
 - ⓘ Some of these use T15 "Star" 5-point Torx security screws instead of the more common 6-point ones.

Step 3



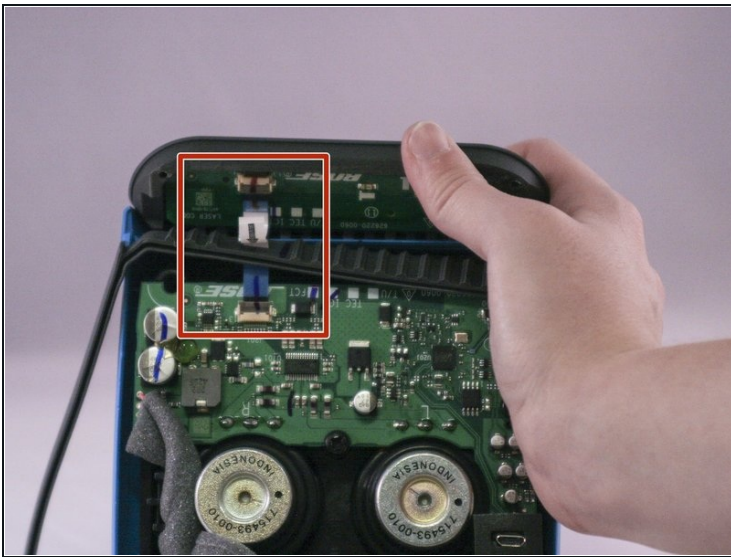
- Carefully open up the casing.
 - 🔧 The top button pad may need to be re-glued upon installing the new casing.

Step 4 — Button Pad



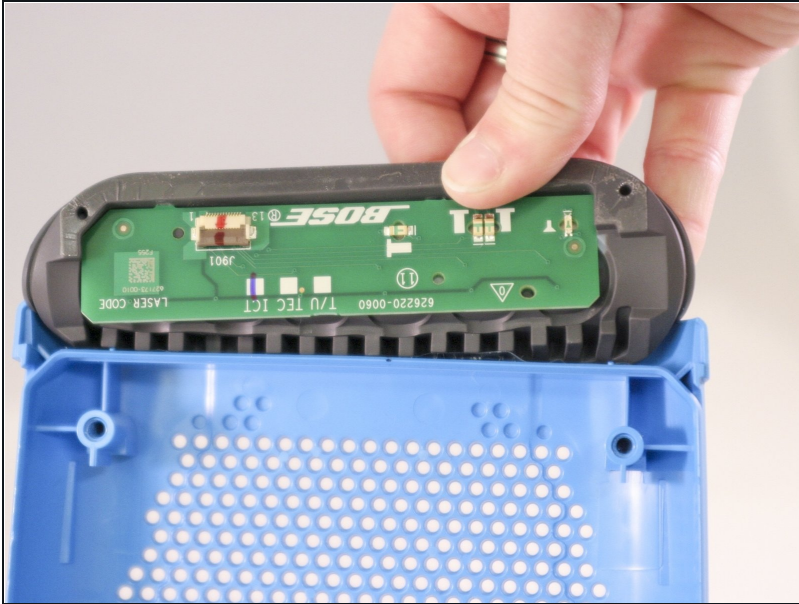
- Lift up the retaining flap on the button cable ZIF connector.
- Pull the button cable straight out of the connector.

Step 5



- Carefully pull the ribbon cable through the rubber gasket that runs around the device.

Step 6



- To remove the old rubber button pad, carefully peel it off of the blue casing.

To reassemble your device, follow these instructions in reverse order, starting from Step 6.