



# PS3 Wireless Controller Teardown

This will be a teardown of a Sony PS3 controller.

Written By: Imad Knight



---

# INTRODUCTION

If you are reading this in order to learn how to repair your controller, don't this will only be a guide of how to TEAR IT DOWN not disassemble.

---



## TOOLS:

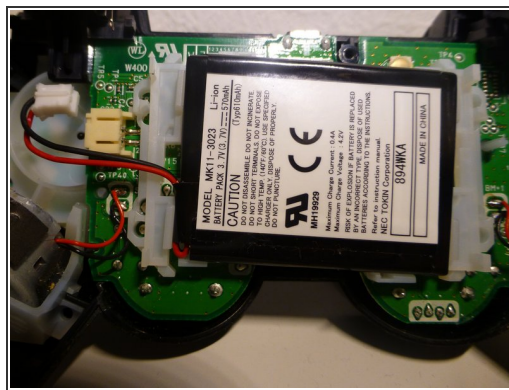
- [Phillips #1 Screwdriver](#) (1)
  - [Tweezers](#) (1)
  - [Soldering Workstation](#) (1)
-

## Step 1 — Unscrewing it



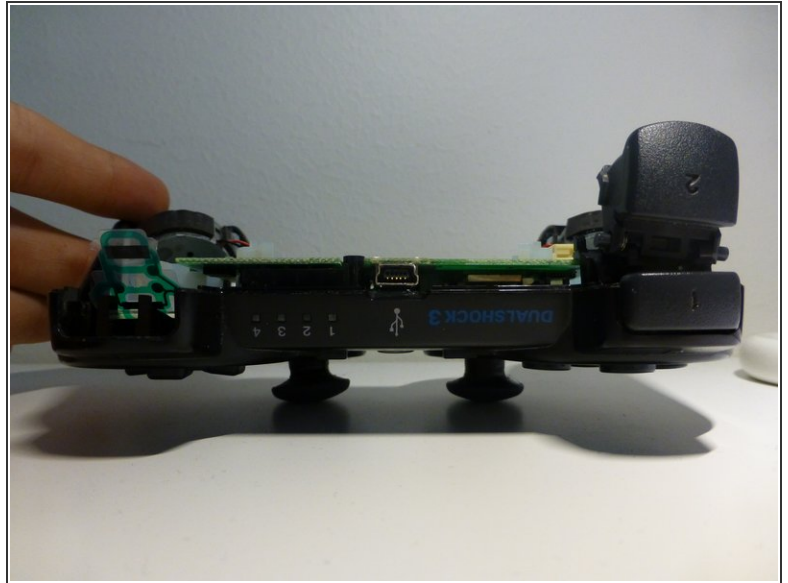
- Flip the controller upside down.
- Unscrew the 5 screws (marked out in orange in the picture).

## Step 2 — Unhooking the battery



- Once the cover is off, the controller should look like this. Follow the red and black wire(s) from the battery to the connector.
- Take a pair of small pliers and unhook the battery (refer to picture 2 of this step to see it unhooked).
- The battery will simply lift out revealing the motherboard (refer to picture 3 of this step).
- From here, the plastic holding the battery will be able to be lifted out.

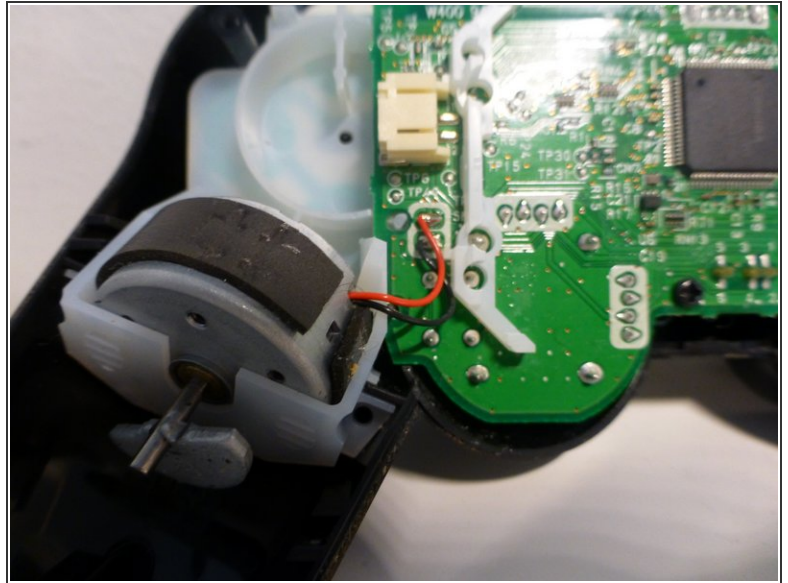
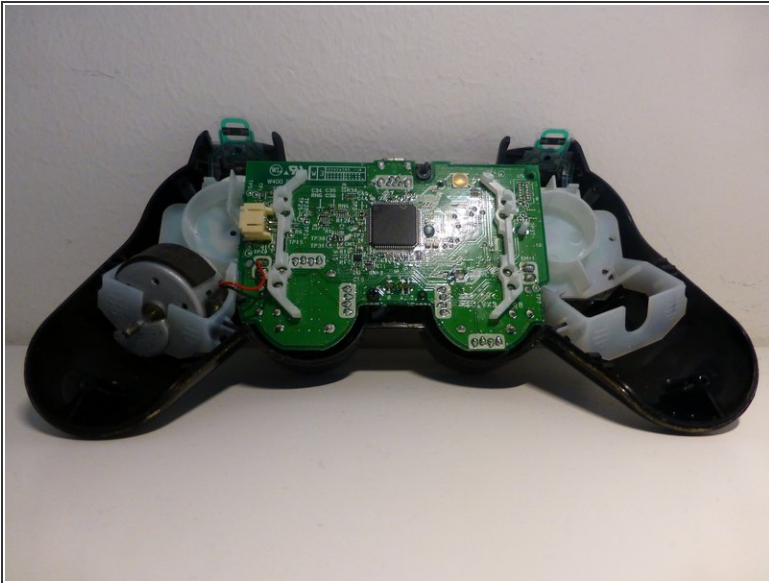
### Step 3 — Removing the L1,L2 and R1,R2 buttons.



- This will be the step where you teardown the controller not take it apart.
- To remove the 4 buttons (2 on each side), first lift out the R1 (or L1) button. This may require you to wiggle the button.
- From here, you will have to apply force to tear out the R2 (or L2) button and the plastic it is connected to. In the 2 pictures (ots) you can see one side taken apart and the other as it normally is.



## Step 4 — Removing the vibration motors.



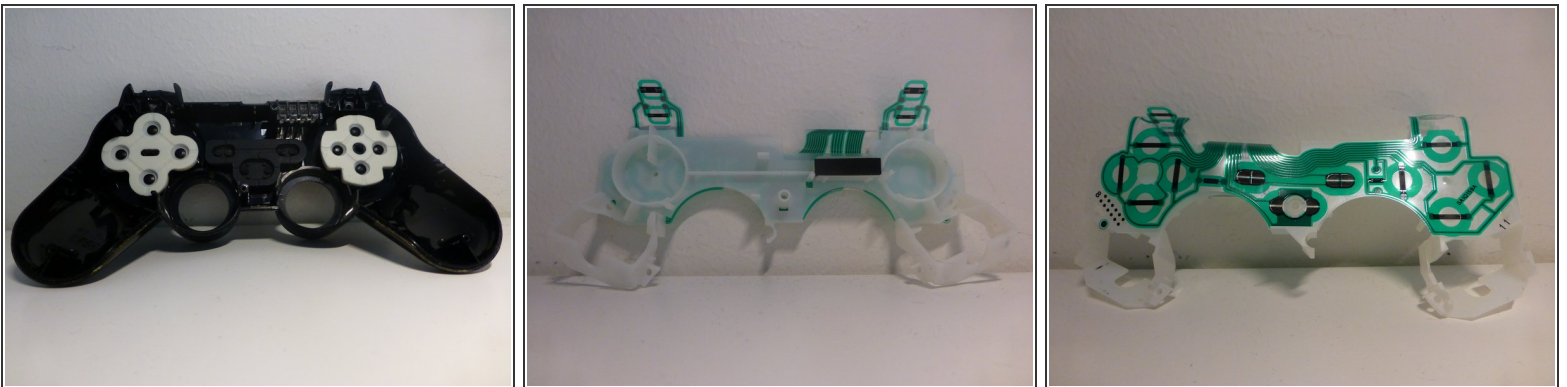
- For this step, you will need to de-solder the wires that connect the motors to motherboard. Or, if you are like me and don't have a solder, you can attempt to rip the wires off.
- First of, lift the whole motor out of the plastic mount. This may take some force as it is glued in.
- After that, simply cut the cable off of the motherboard, or de-solder it. In the first picture you can see what your controller will look like with one motor missing.
- Repeat the same on the other side.

## Step 5 — Removing the motherboard



- First off, unscrew the single screw that holds the motherboard onto the plastic (marked out in orange in the first and second picture ots).
- With that screw removed, the whole motherboard (along with the 2 joysticks) can be simply lifted right out.
- Pictures 2 and 3 show the case without the motherboard and joysticks.

## Step 6 — Removing the white plastic.



- To remove the white plastic, simply lift it out of the controller. There are no screws, clips or glue holding it in.
- Pictures 2 and 3 show the plastic by itself.

## Step 7 — Removing the remaining buttons



- First of, remove the 2 white pieces or rubber on the sides and the middle, grey piece too. The first picture shows you what this will look like.
- Then simply "pop" the buttons out (marked out in orange in picture 2) from the other side (the front). You can also remove the "Play Station" logo button.
- For the other side, remove the top plastic and then the 4 buttons (made of one piece of plastic).

## Step 8 — Remove the final plastic piece



- The final piece to remove is the plastic battery level light cover.
- This is done by simply pressing in the 4 (slightly protruding) pieces of plastic.
- The 3 pictures show the the case completely stripped out.

## Step 9



- And thats that. If you have been following the guide, you now have a completely stripped down PS3 controller. If you have read this for entertainment, you now know what it takes to strip down a PS3 controller. Thank you for reading.