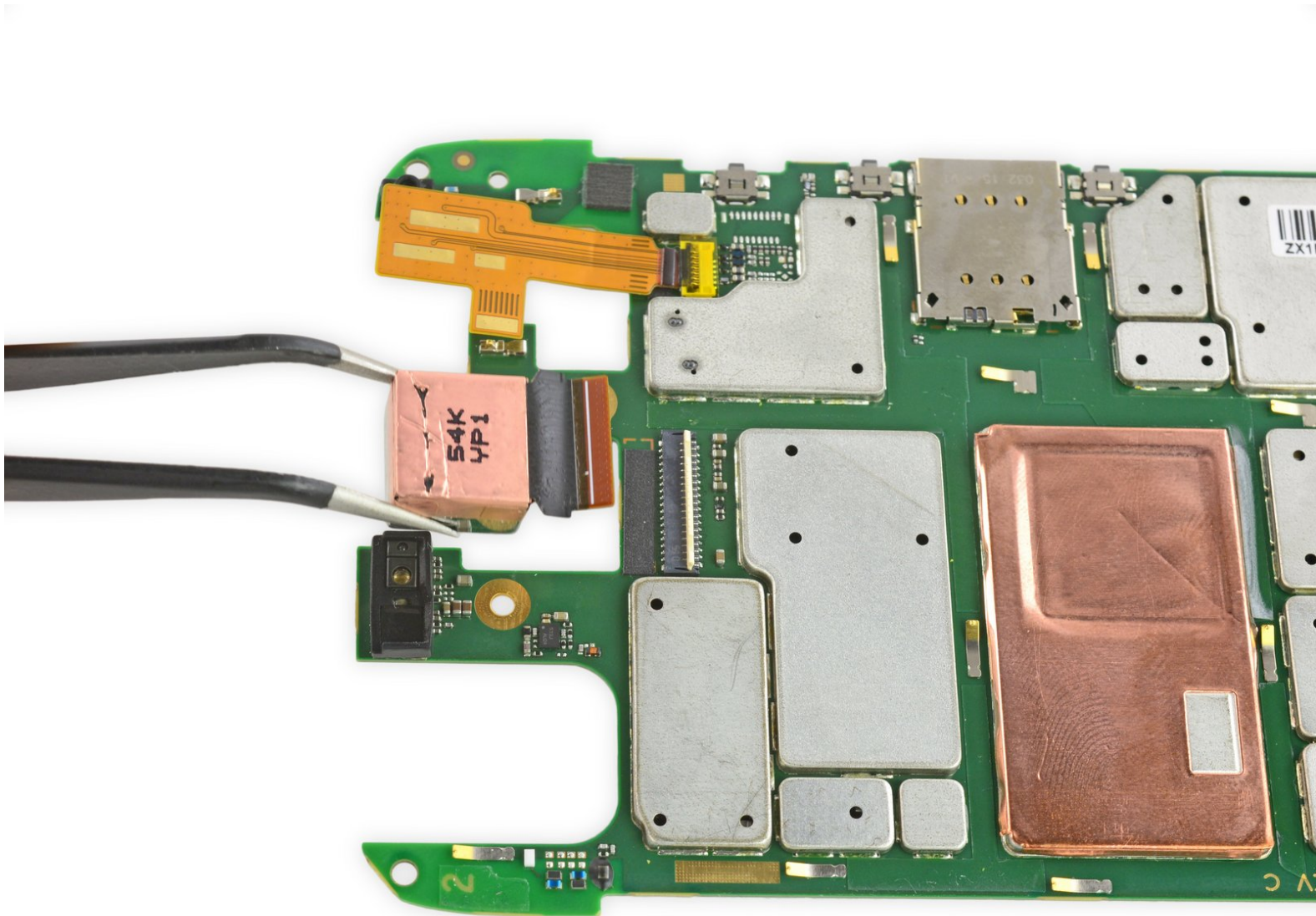




# Motorola Droid Turbo Rear Facing Camera Replacement

Replace the rear-facing camera on your Motorola Droid Turbo.

Written By: Geoff Wacker



# INTRODUCTION

Use this guide to replace the rear-facing camera on your Motorola Droid Turbo.



## TOOLS:

- [iFixit Opening Tools](#) (1)
- [iOpener](#) (1)
- [T5 Torx Screwdriver](#) (1)
- [Spudger](#) (1)
- [Tweezers](#) (1)



## PARTS:

- [Droid Turbo Rear Camera](#) (1)

## Step 1 — Rear Case



- [Prepare an iOpener](#) and lay it over the rear case to soften the adhesive on securing the rear case to the phone.

## Step 2



- Use a plastic opening tool to pry the rear case off of the rest of the device.
- Remove the rear case.
  - ⓘ The wireless charging coil may try to stick to the rear case, so make sure to remove it from the case before fully separating the rear case from the rest of the device.

## Step 3 — Midframe



- Remove the midframe bezel.

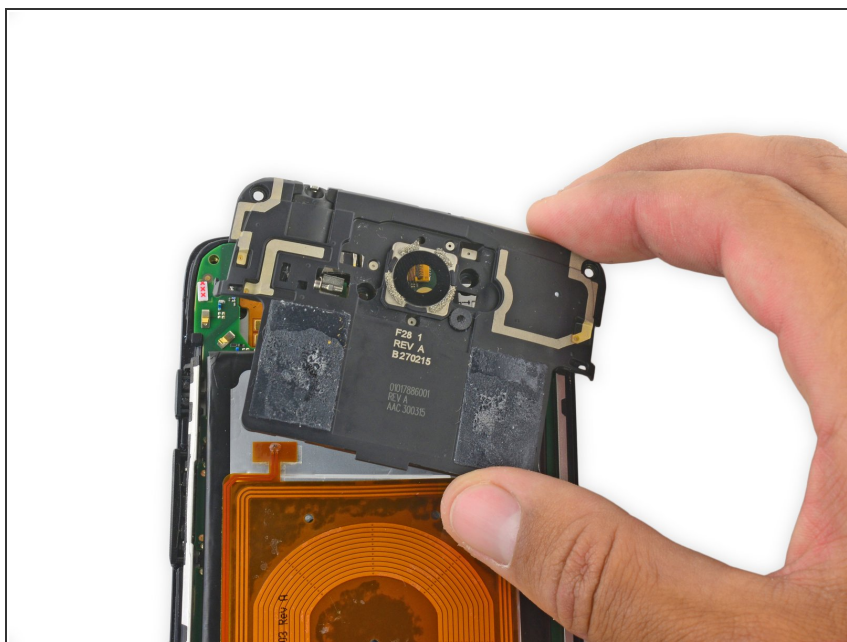
## Step 4



- Remove the four Torx T5 screws securing the midframe plate.

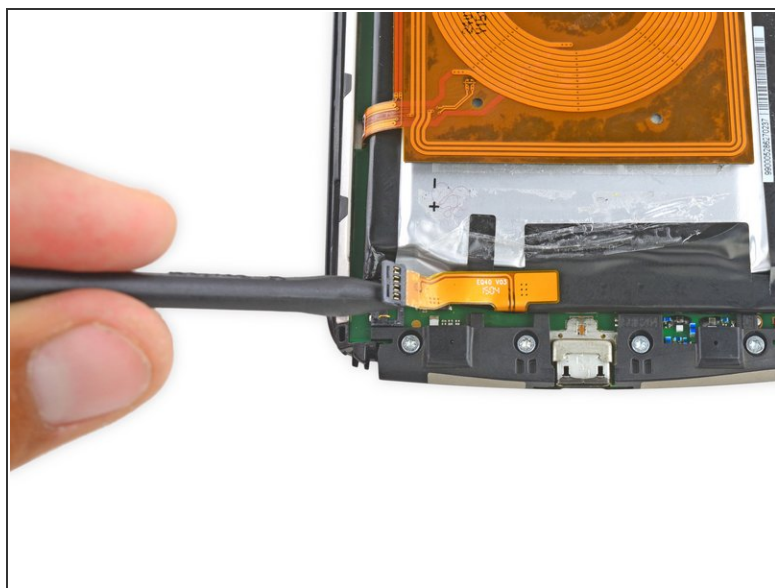
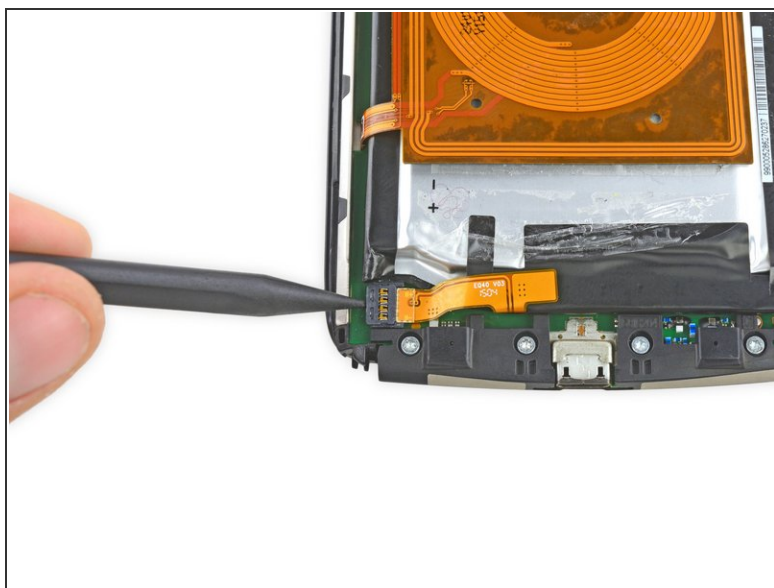


## Step 5



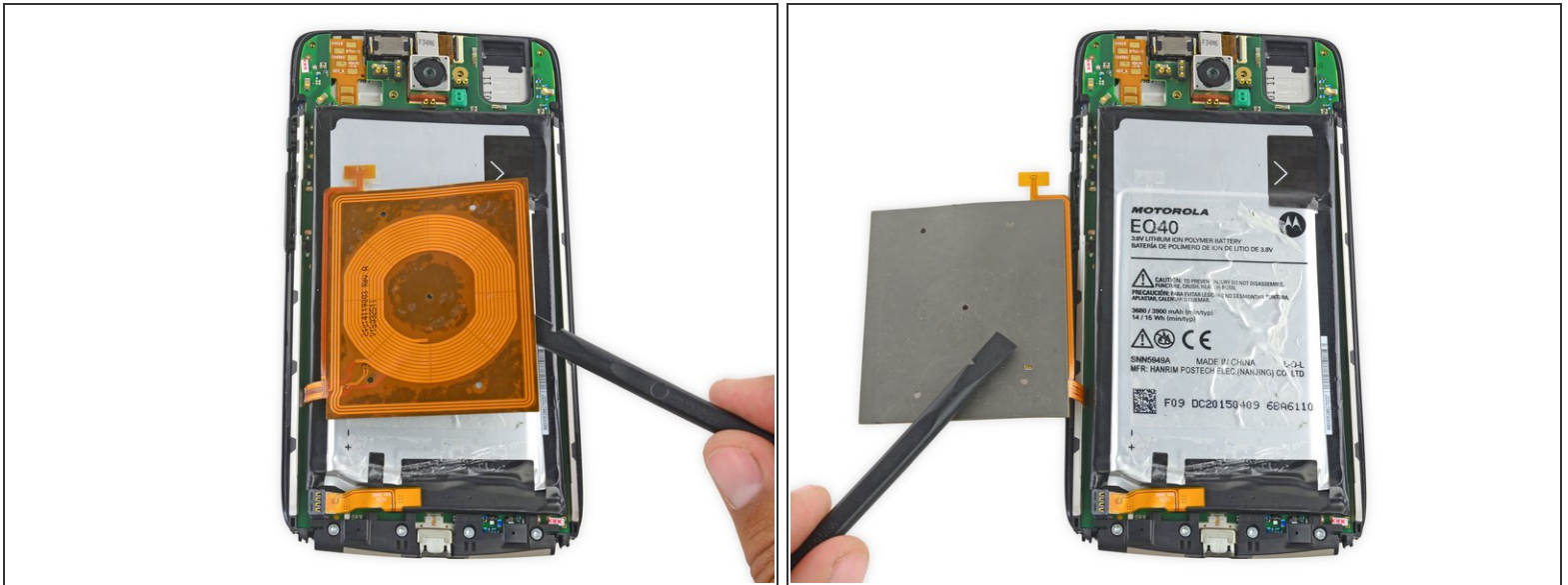
- Remove the midframe.

## Step 6 — Battery



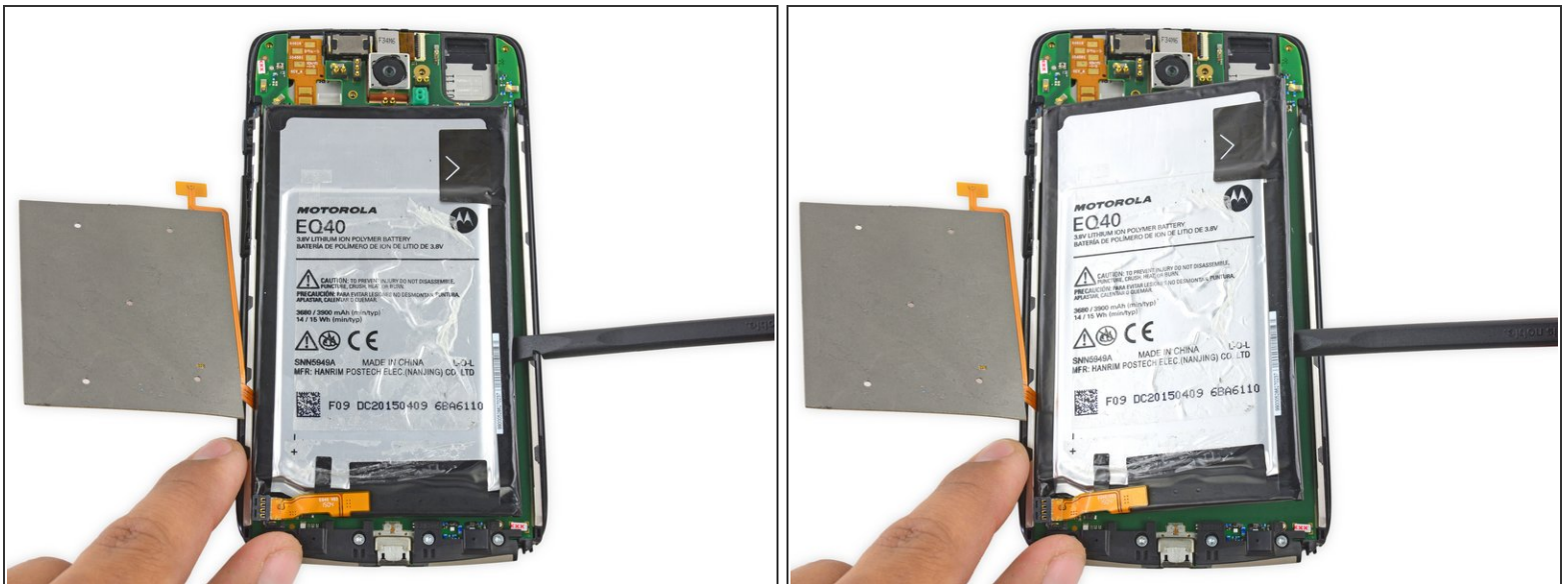
- Use the point of a spudger to pop up the battery connector.

## Step 7



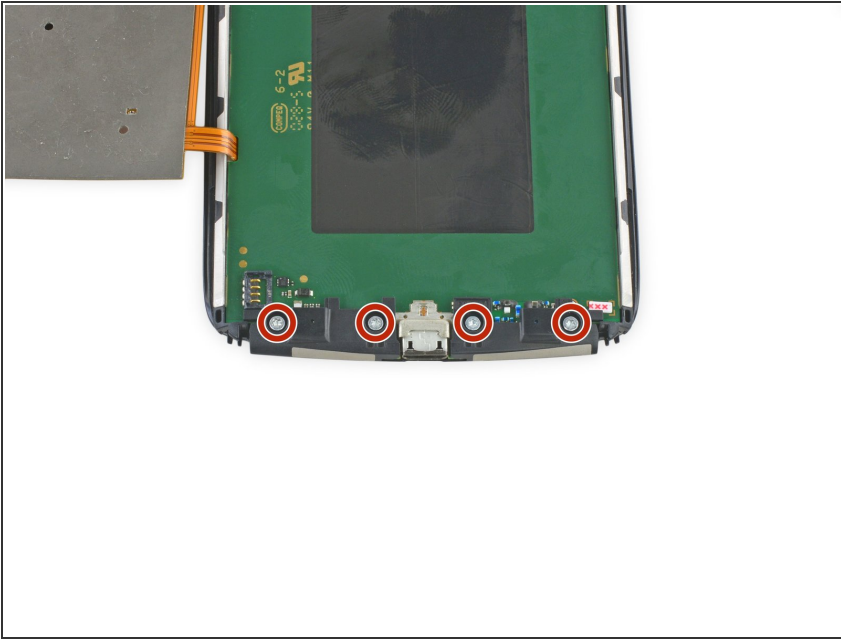
- Fold the wireless charging coil away from the battery.

## Step 8



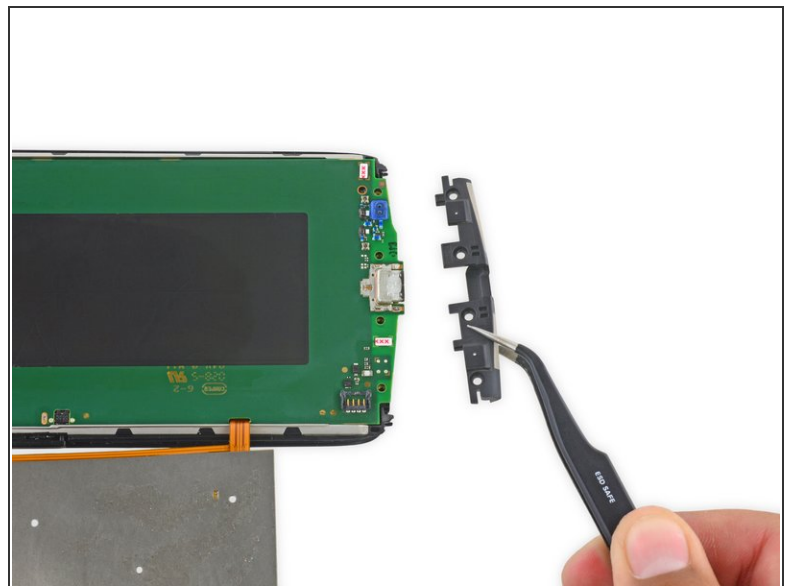
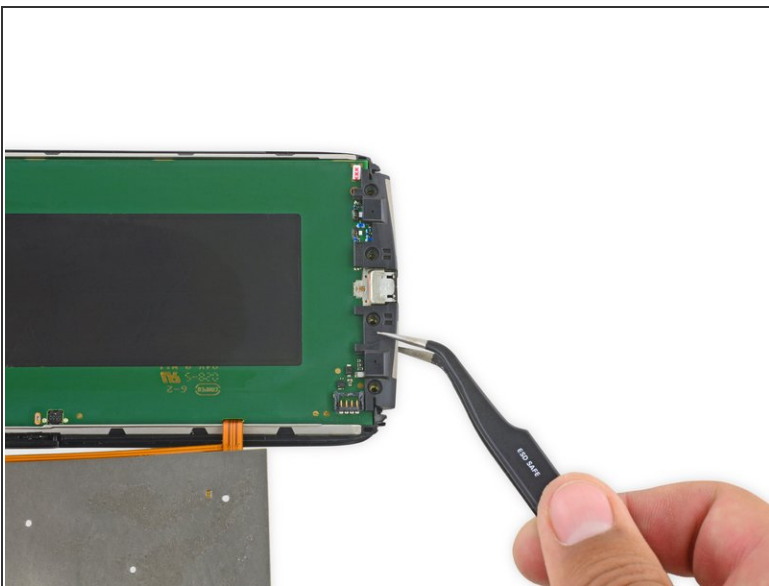
- Use a spudger to gently pry the battery up from the rest of the device.
- ⓘ The battery is secured with some moderate adhesive, so some force may be necessary.

## Step 9 — Rear Facing Camera



- Remove the four Torx T5 screws securing the lower antenna board to the motherboard.

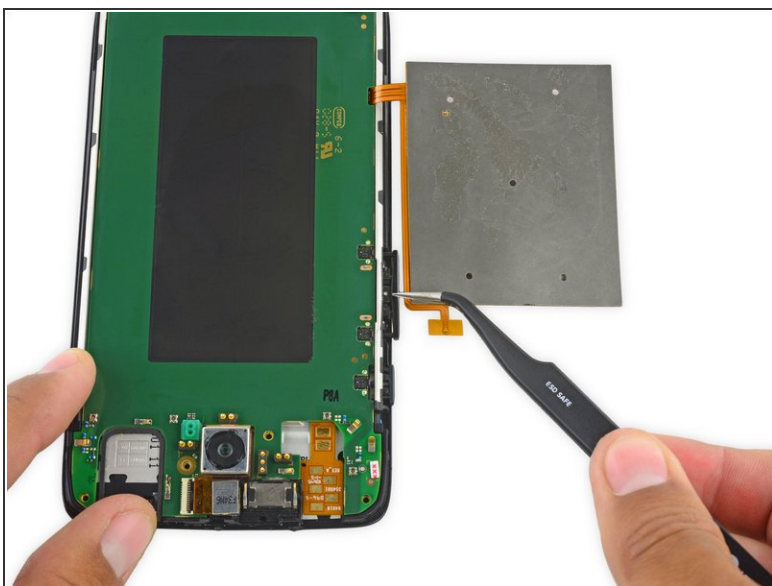
## Step 10



- Remove the lower antenna board.

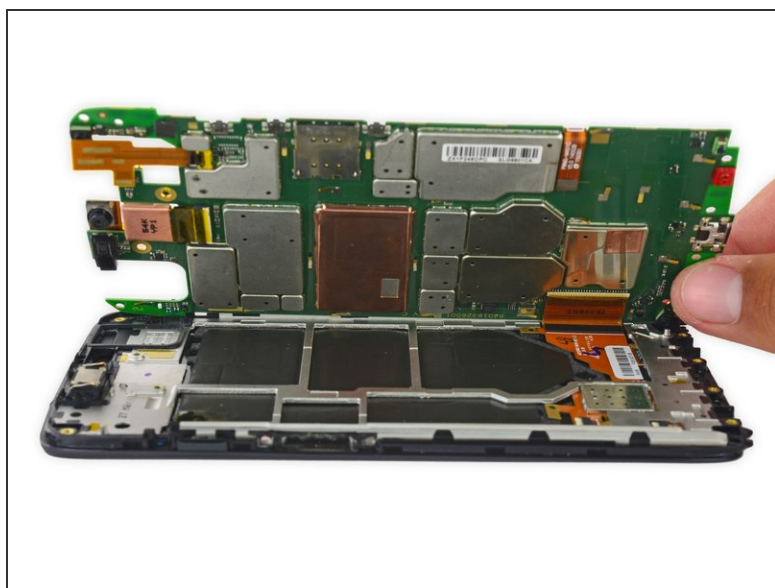
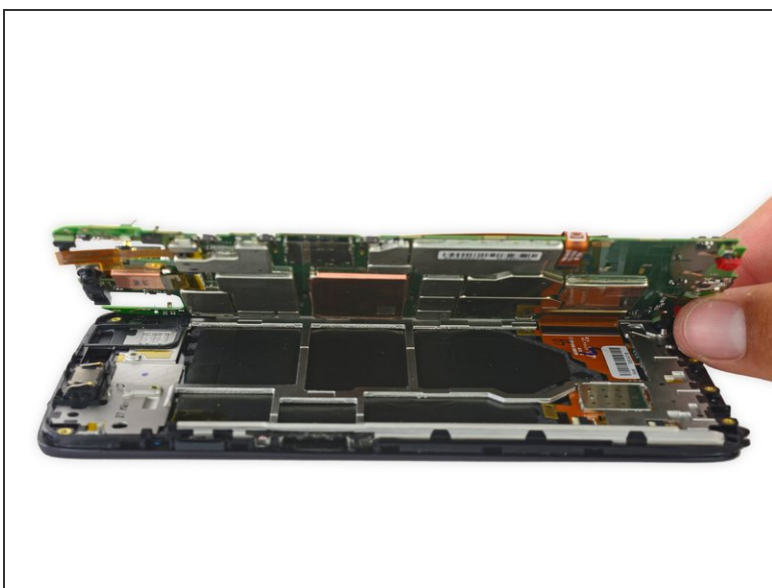


## Step 11



- Remove the SIM card holder/volume button rocker.

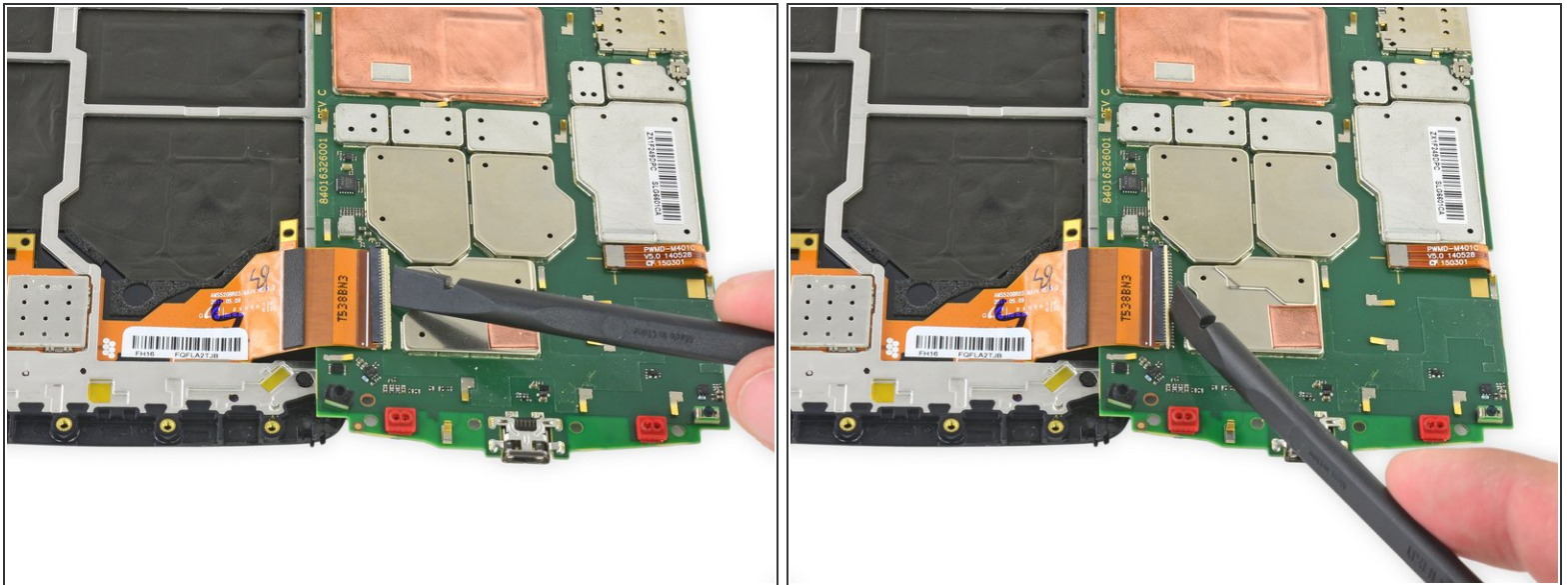
## Step 12



- Carefully lift up the motherboard to expose the display connector.

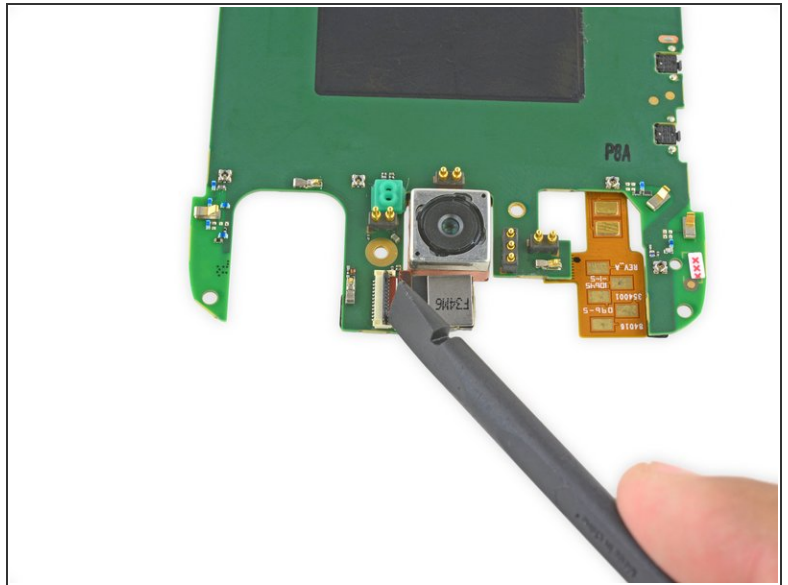
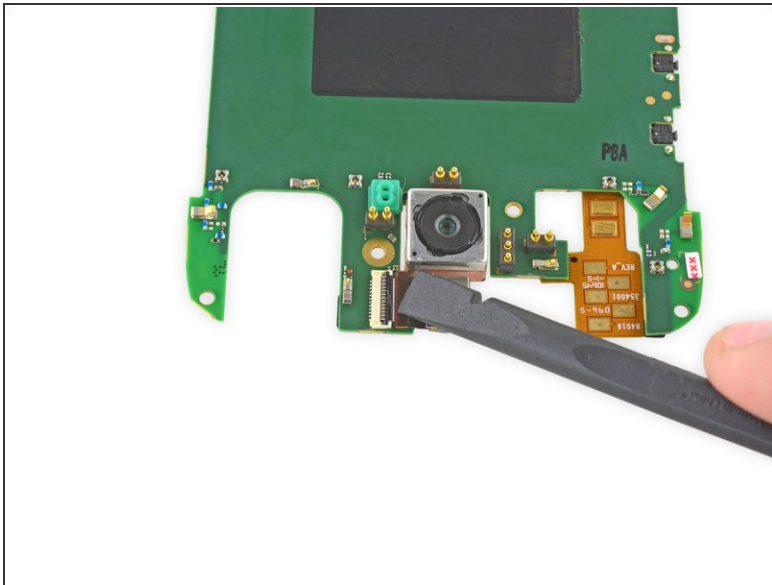


## Step 13



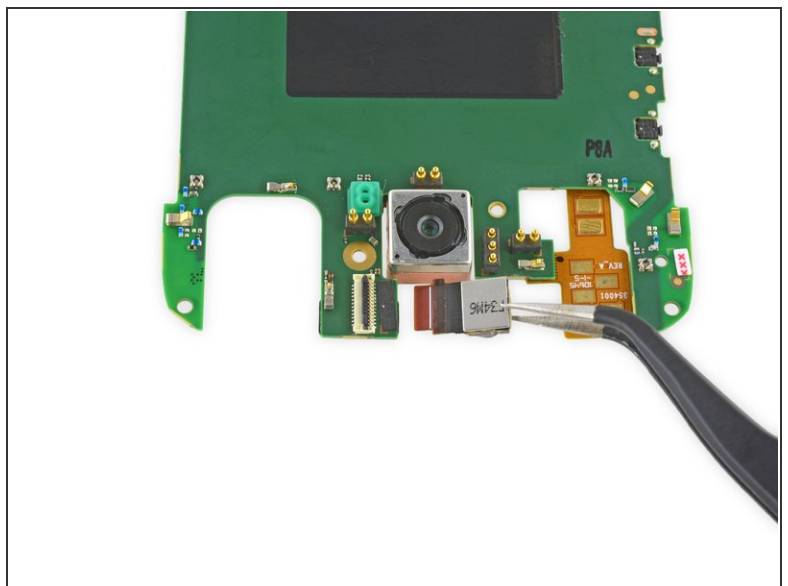
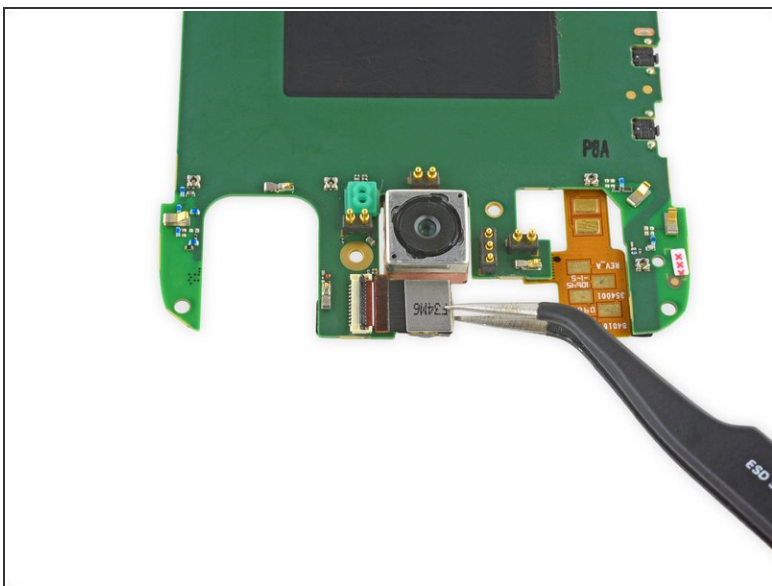
- Use the flat end of a spudger to flip up the retaining flap on the display ZIF connector.
  - Pull the display ribbon cable free of the connector.
- i** Disconnecting the display ribbon cable makes it easier to remove the rear-facing camera, but it is not strictly necessary.

## Step 14



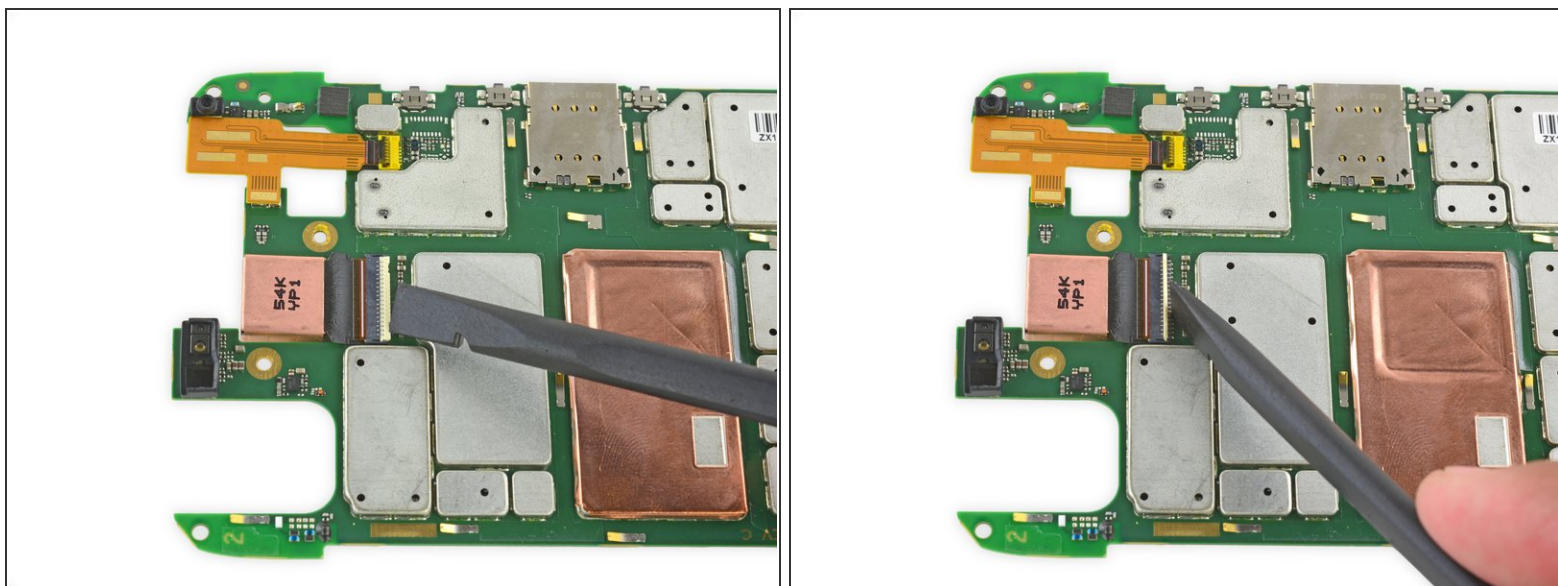
- Use the flat end of a spudger to flip up the black retaining flap on the front-facing camera ZIF connector.
- ❗ Removing the front-facing camera makes it easier to remove the rear-facing camera, but it is not strictly necessary.

## Step 15



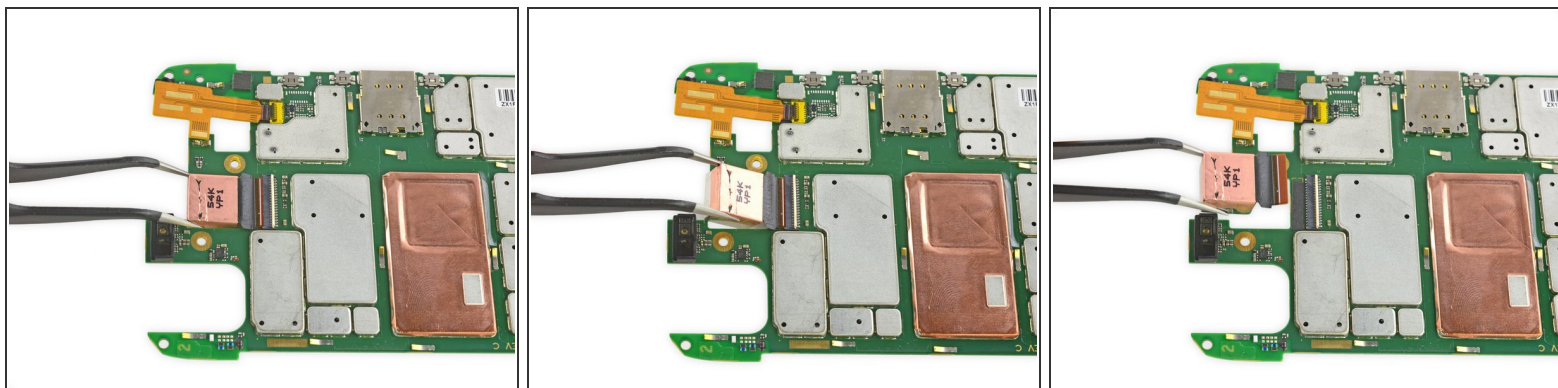
- Remove the front-facing camera.

## Step 16



- Use the flat end of a spudger to flip up the tan retaining flap on the rear-facing camera ZIF connector.

## Step 17



- Remove the rear-facing camera.

To reassemble your device, follow these instructions in reverse order.